



SUBJECT PROPERTY



TAYLOR ST

1720 Taylor Street

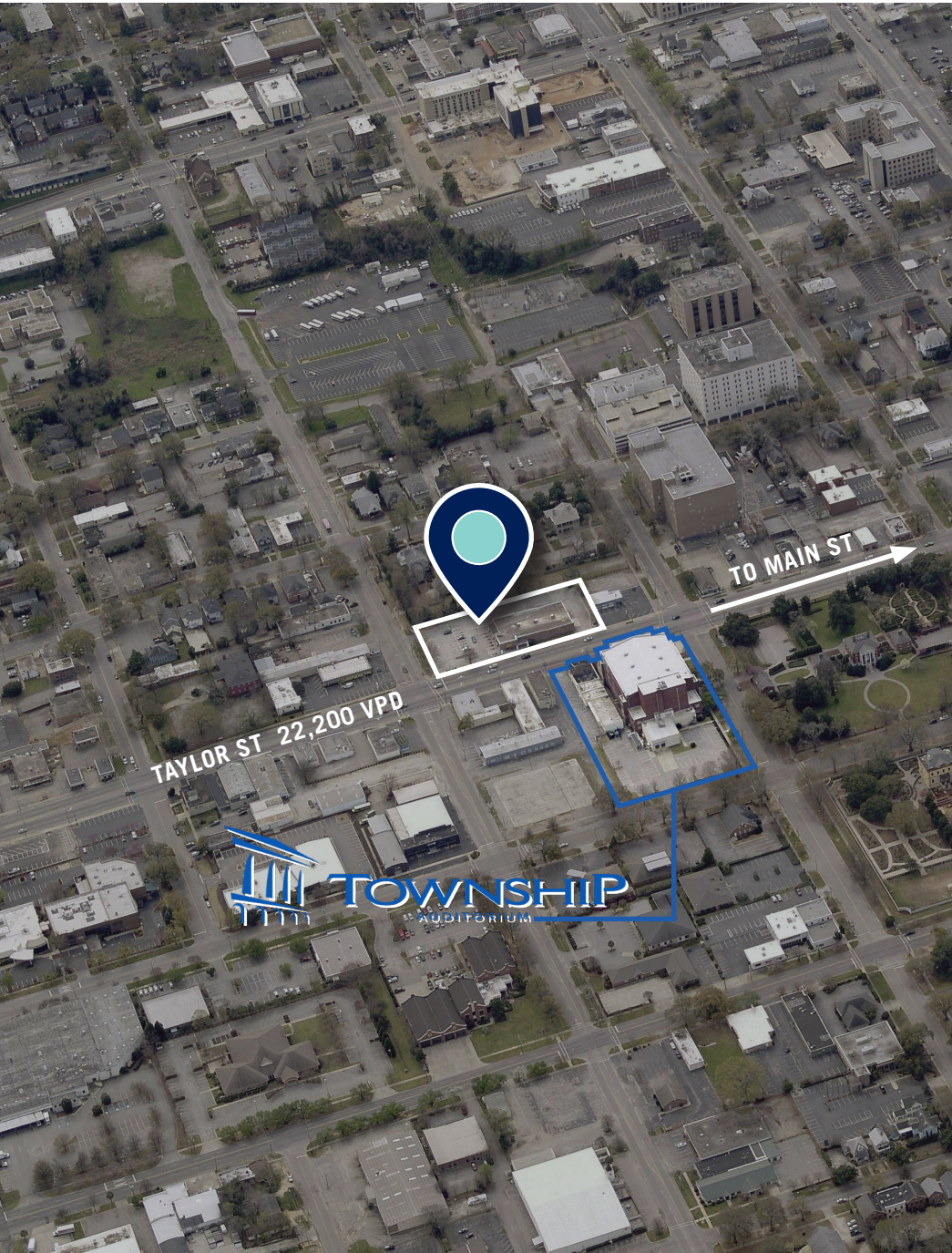
COLUMBIA, SOUTH CAROLINA 29201

10,000 SF BUILDING FOR SALE/LEASE



Property Details

FOR SALE: \$2,000,000
FOR LEASE: CONTACT BROKERS



BUILDING OVERVIEW

1720 Taylor Street

Freestanding building with drive-thru

±10,000 Square Feet

±1.14 Acre parcel

Masonry construction

Zoned Community Activity Center/Corridor (CAC) by the City of Columbia

±45 striped surface parking spaces (ability to expand parking)

Dollar General closing store

Open floorplan conducive to a wide range of uses

LOCATION

Highly visible and accessible location

Close proximity to Main Street, Bull Street, The Vista, State House, multiple large healthcare providers, & third party medical

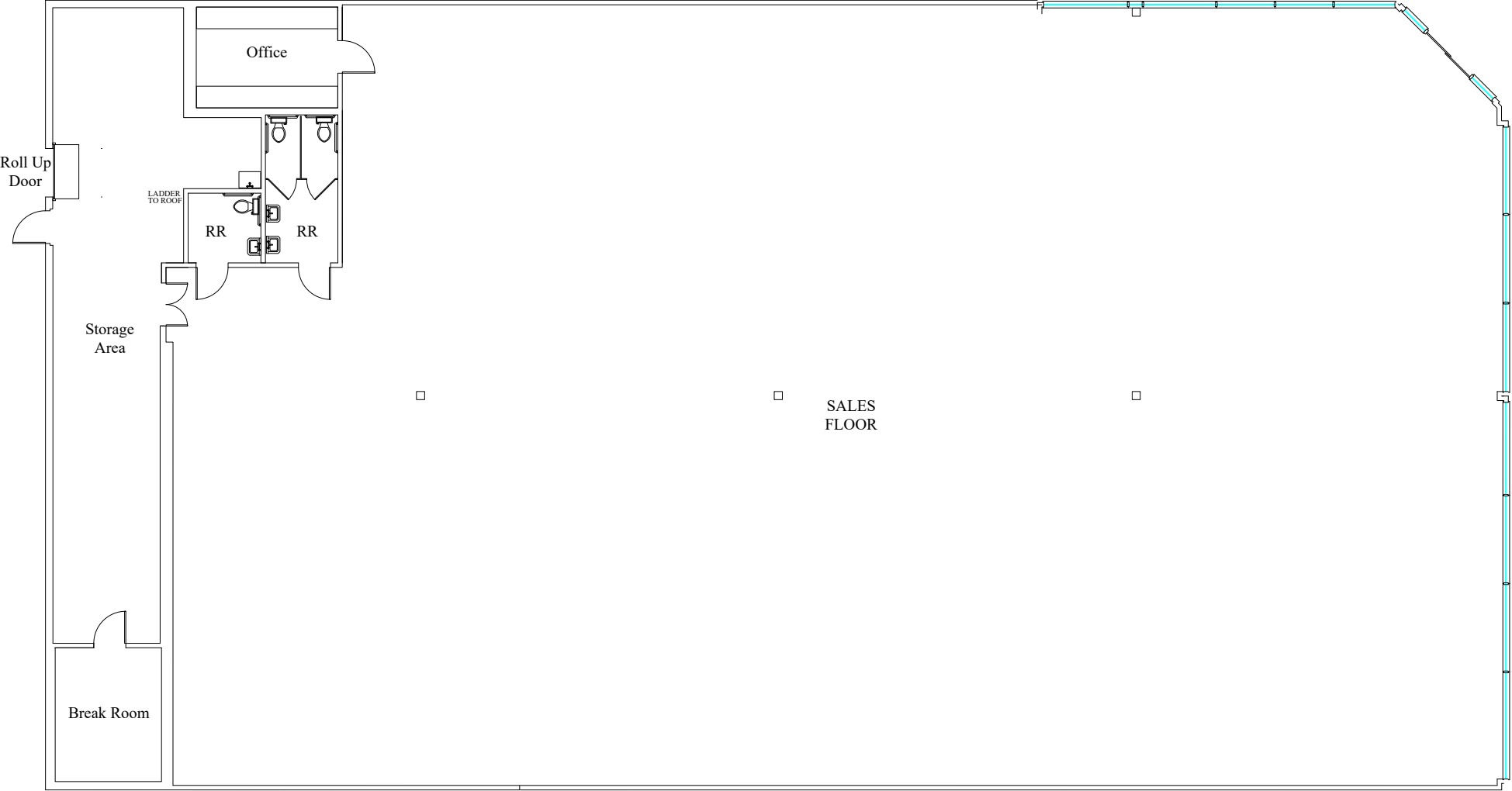
Located at a signalized intersection

Located across the street from the Township Auditorium (3,072 seats)

±22,200 vehicles per day

Building Floorplan

TAYLOR STREET



Property Aerial



TAYLOR ST 22,200 VPD

BARNWELL ST

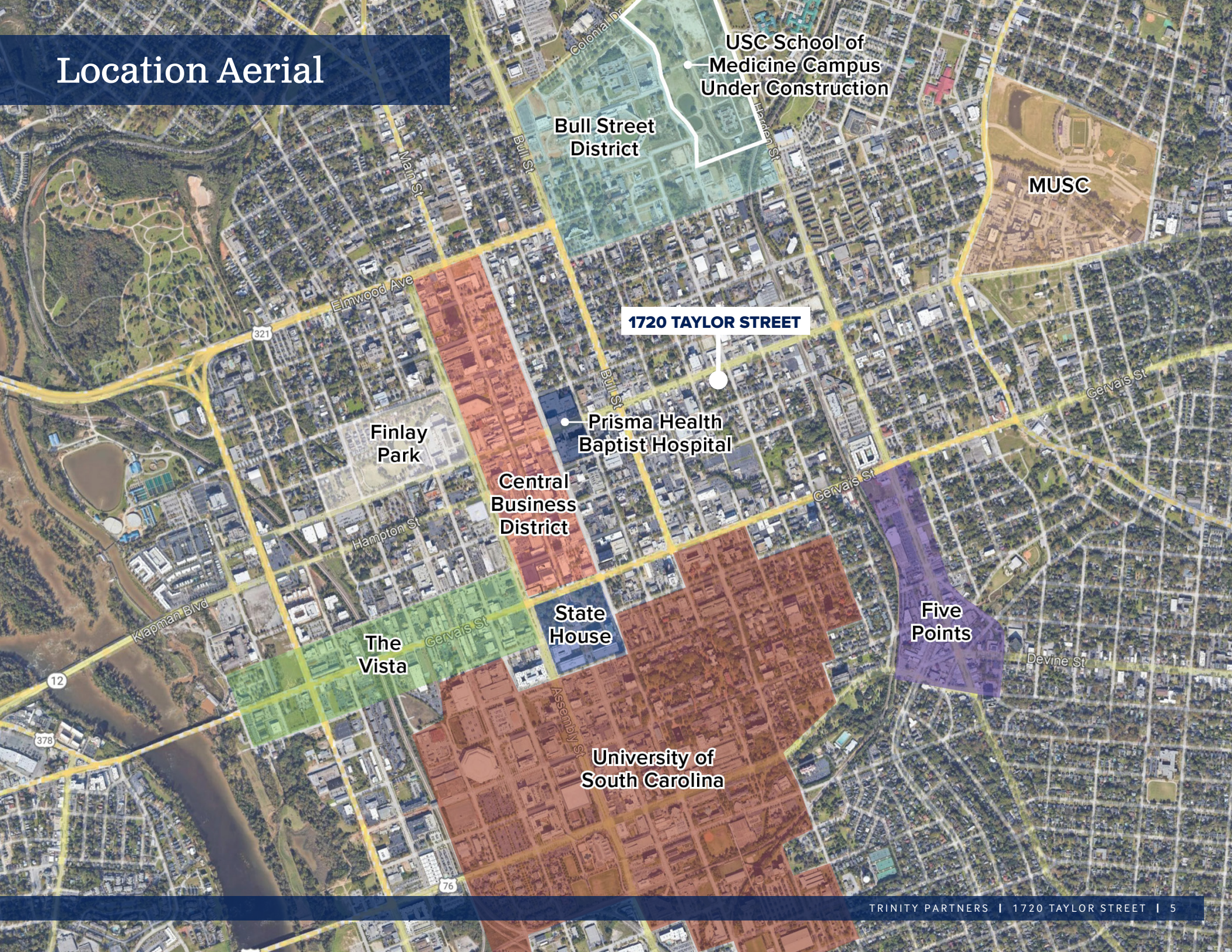
TAYLOR ST 22,200 VPD

BARNWELL ST

HENDERSON ST

HAMPTON ST

Location Aerial



USC School of
Medicine Campus
Under Construction

Bull Street
District

MUSC

1720 TAYLOR STREET

Prisma Health
Baptist Hospital

Central
Business
District

Finlay
Park

State
House

Five
Points

University of
South Carolina

The
Vista

CONTACT



BRADEN SHOCKLEY, SIOR

Partner

bshockley@trinity-partners.com
803.567.1373



ROGER WINN, SIOR

Founding Partner, SC

rwinn@trinity-partners.com
803.567.1455



WILL MCGREGOR

Brokerage Associate

wmcgregor@trinity-partners.com
803.567.1912

TRINITY PARTNERS COLUMBIA

1501 Main Street, Suite 410
Columbia, SC 29201
803.567.5454

