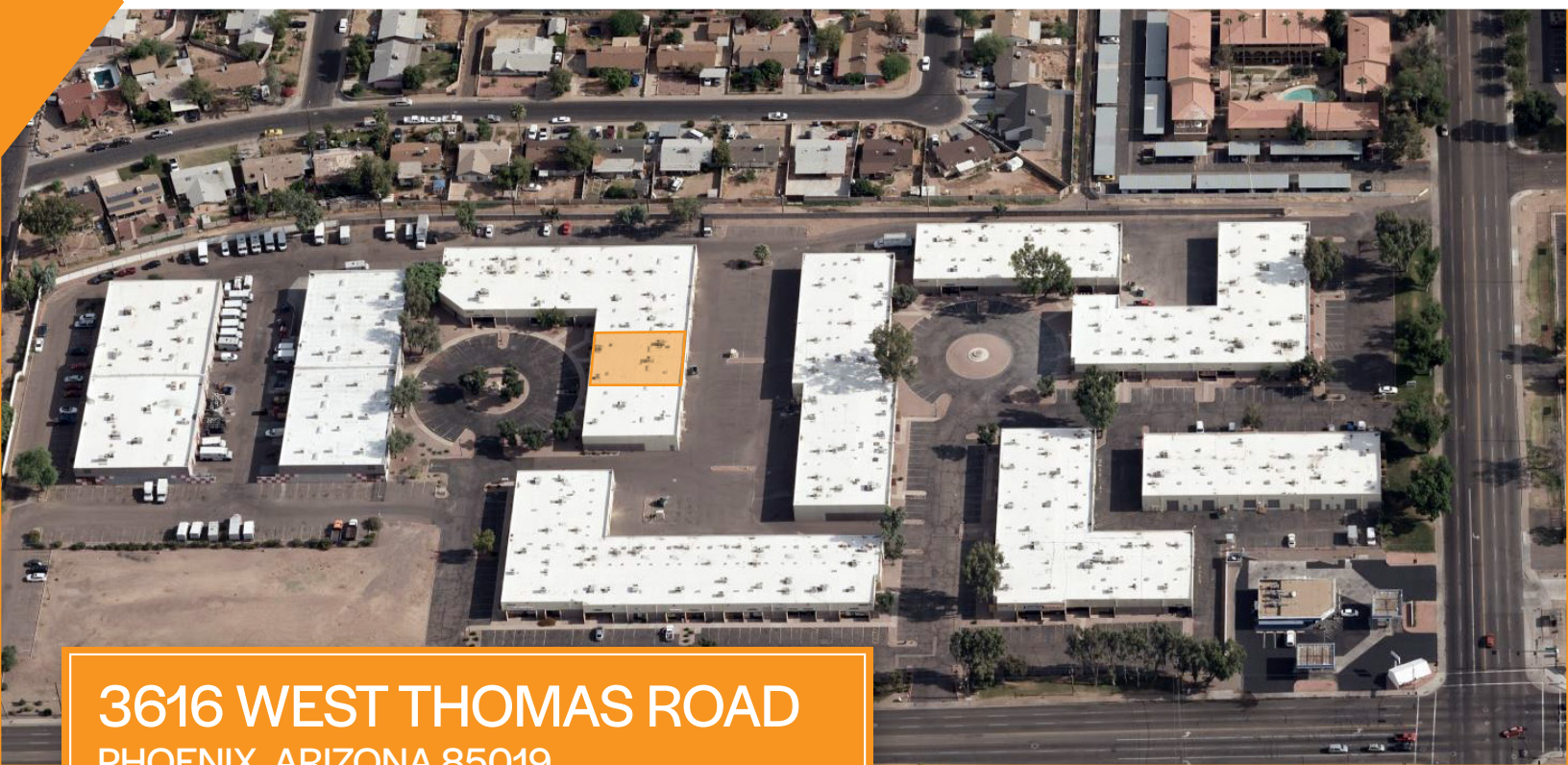


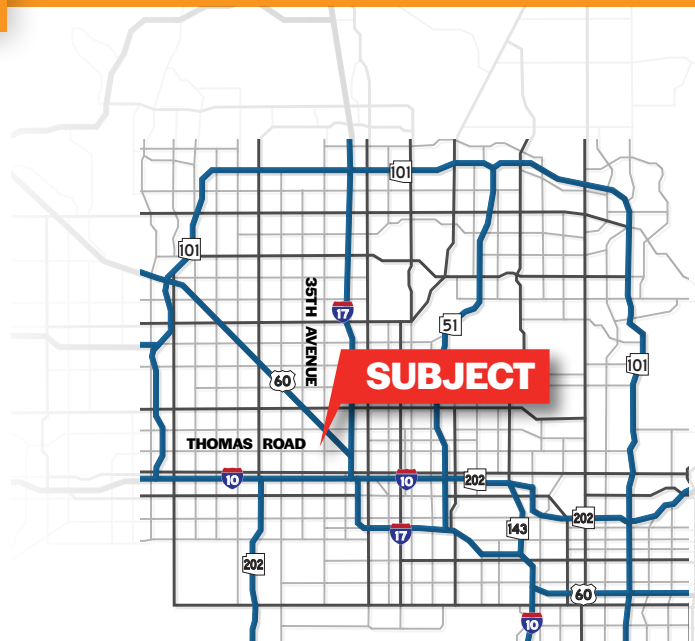
FOR LEASE



3616 WEST THOMAS ROAD
PHOENIX, ARIZONA 85019

PROPERTY OVERVIEW

- Suites 7 & 8 - 6,440 Square Feet
- \$1.10 Per Square Foot, Modified Gross
- 3 - 10' x 12' Grade Level Loading Doors
- Flexible Industrial Park Zoning
- 16' Clear Height
- 100% Evap Cooled Warehouse
- Offices, Break Area, Reception
- 3 Phase Power
- Immediate Access to Grand Avenue



Adam Shteir

Partner

602.769.0521

adam@citywidecre.com

Todd Hamilton

Managing Partner/Designated Broker

602.909.8759

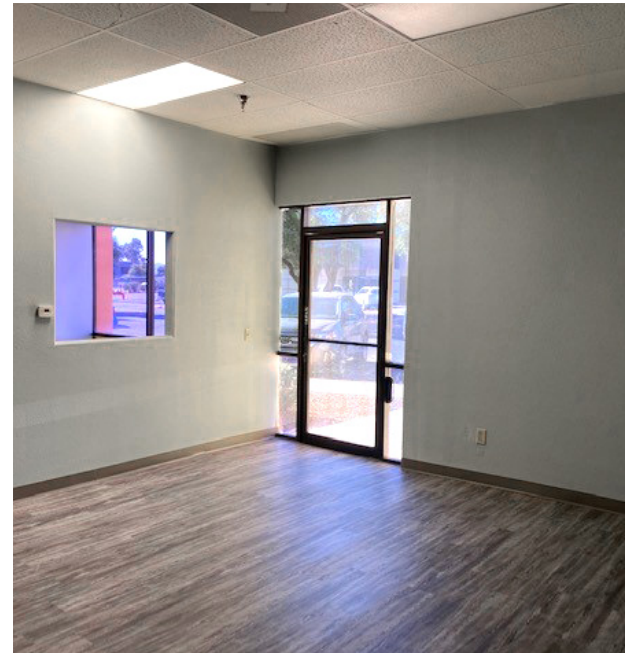
todd@citywidecre.com

2122 East Highland Avenue, Suite 225 • Phoenix, Arizona 85016 • 602.313.1000 • citywidecre.com

All information furnished is from sources deemed reliable. No representation is made as to the accuracy thereof and it is submitted subject to errors, omissions, changes, or withdrawal without notice and to any special listings conditions, including the rate and manner of payment of commissions for particular offerings imposed by principals or agreed to by the company, the terms of which are available to interested principals or brokers. All dimensions are approximate. Owner and/or Broker make no representations expressed or implied as to the accuracy of floor plan/site plan dimensions.

citywide
COMMERCIAL REAL ESTATE

FOR LEASE



FOR MORE INFORMATION

Adam Shteir

Partner

602.769.0521

adam@citywidecre.com

Todd Hamilton

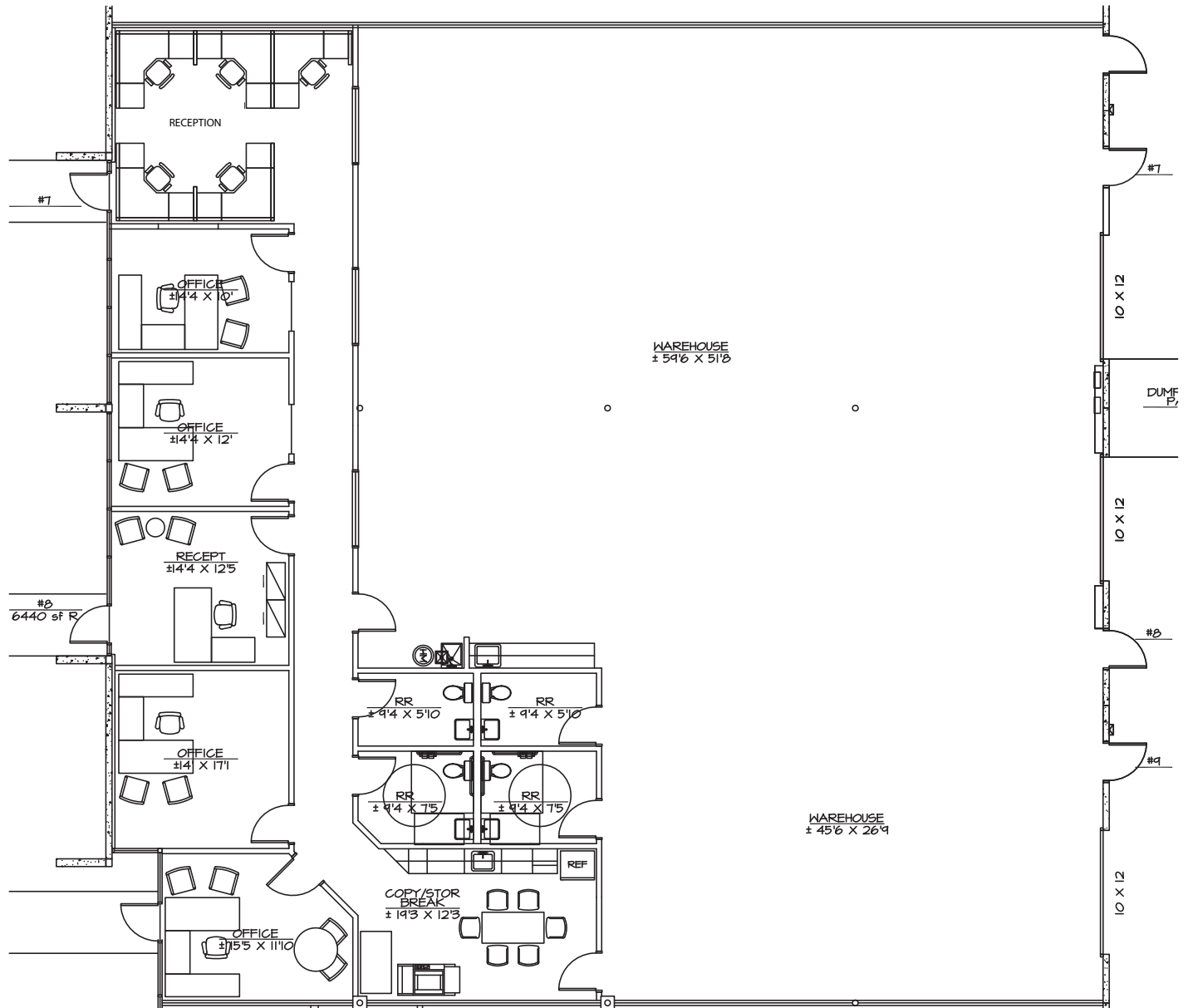
Managing Partner/Designated Broker

602.909.8759

todd@citywidecre.com

2122 East Highland Avenue, Suite 225 • Phoenix, Arizona 85016 • 602.313.1000 • citywidecre.com

FOR LEASE



FOR MORE INFORMATION

Adam Shteir

Partner

602.769.0521

adam@citywidecre.com

Todd Hamilton

Managing Partner/Designated Broker

602.909.8759

todd@citywidecre.com

2122 East Highland Avenue, Suite 225 • Phoenix, Arizona 85016 • 602.313.1000 • citywidecre.com