



8552 MELROSE AVENUE

Carine Mamann
Vice Chairman
lic. 01734150
carine.mamann@cushwake.com
T. 310 595 2235

Kazuko Morgan
Executive Vice Chairman
lic. 01070005
kazuko.morgan@cushwake.com
T. 310 595 2235



PROPERTY DETAILS



ADDRESS

8552 Melrose Avenue
West Hollywood, CA 90069



USE

Retail



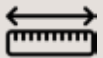
SIZE

± 4,479 SF



RENT

Available upon Request



FRONTAGE

± 55' on Melrose Avenue



PARKING

10 spaces (7 spaces on roof
and 3 spaces in rear)



HIGHLIGHTS



Surrounded by high-end retail and restaurants



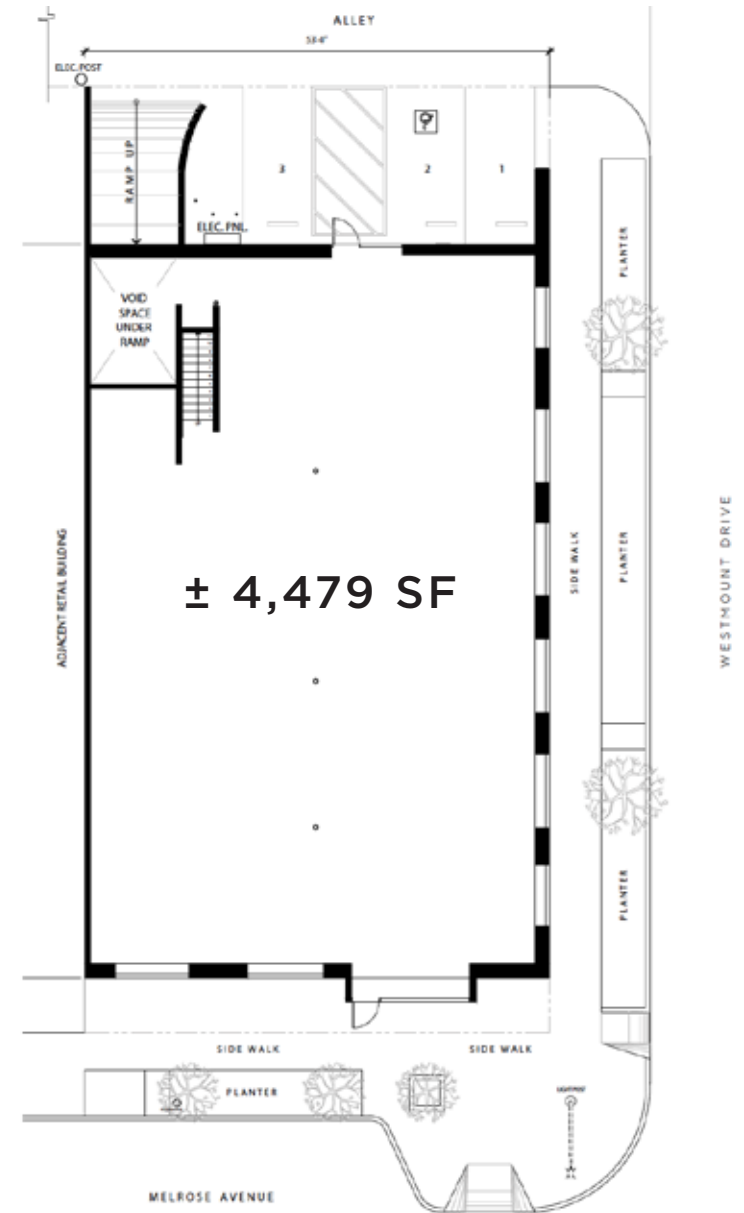
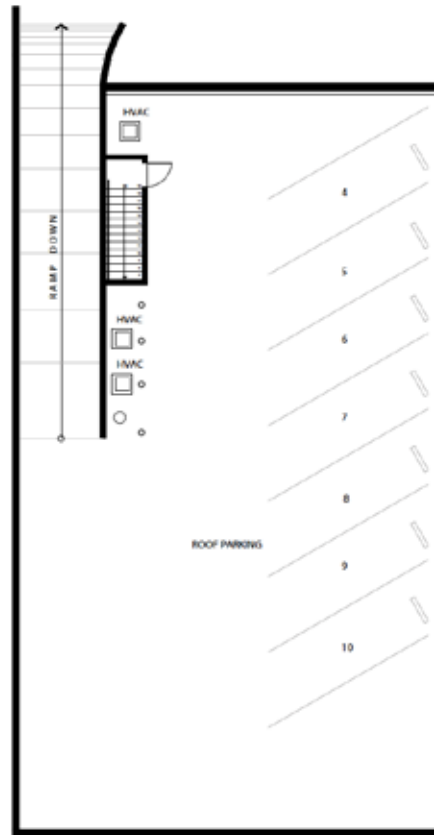
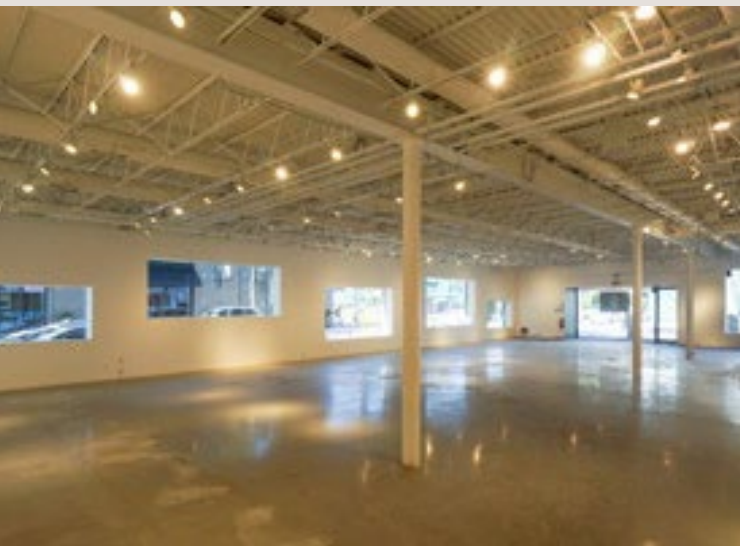
Ground floor retail with an open layout



Offers ample natural light



On-site parking accessible from Westmount Drive and ample street parking available



DEMOGRAPHICS



POPULATION

44,069
1 MILE

262,504
3 MILE

812,602
5 MILE



DAYTIME POPULATION

77,899
1 MILE

396,522
3 MILE

1,048,296
5 MILE



MEDIAN AGE

43
1 MILE

40
3 MILE

38
5 MILE



AVERAGE HOUSEHOLD INCOME

\$158,713
1 MILE

\$155,601
3 MILE

\$131,999
5 MILE



AERIAL



8552
MELROSE
AVENUE

VINCE.

MARTYN
LAWRENCE
BULLARD
DESIGN

TEMPUR-PEDIC

RH
RESTORATION HARDWARE

CATCH
INTERIORS
sootva
THE SHADE
STORE

PDC
MEDICAL CENTER

MANSOUR

Metalab

DESIGN
WITHIN
REACH

@world

ami

THE GREAT

With Caffe
Espresso-Cappuccino-Lattes
All Your Faves

CUSHMAN &
WAKEFIELD



The information contained herein has been obtained from sources deemed reliable but has not been verified and no guarantee, warranty or representation, either express or implied, is made with respect to such information. Terms of sale or lease and availability are subject to change or withdrawal without notice.

Carine Mamann

Vice Chairman

lic. 01734150

carine.mamann@cushwake.com

T. 310 595 2235

Kazuko Morgan

Executive Vice Chairman

lic. 01070005

kazuko.morgan@cushwake.com

T. 310 595 2235

