

1,700 – 7,100 SF

# OFFICE SPACE

# FOR LEASE





# PROPERTY HIGHLIGHTS



## The Lafayette Building

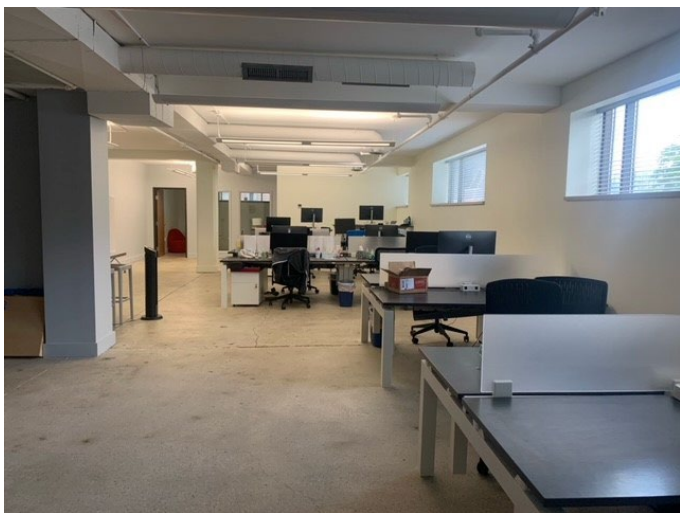
333 W 7<sup>th</sup> Street

- Historic Royal Oak school building reimagined as a modern, contemporary office space
- Features a modern outdoor sculpture by artist James Kaye
- Move in ready suites from 1,700 - 7,100 SF
- Updated interior finishes
- Prime location in the thriving Royal Oak Downtown
- Professionally owned and managed
- Lease rate: \$25 SF/YR



333 W 7<sup>th</sup> Street

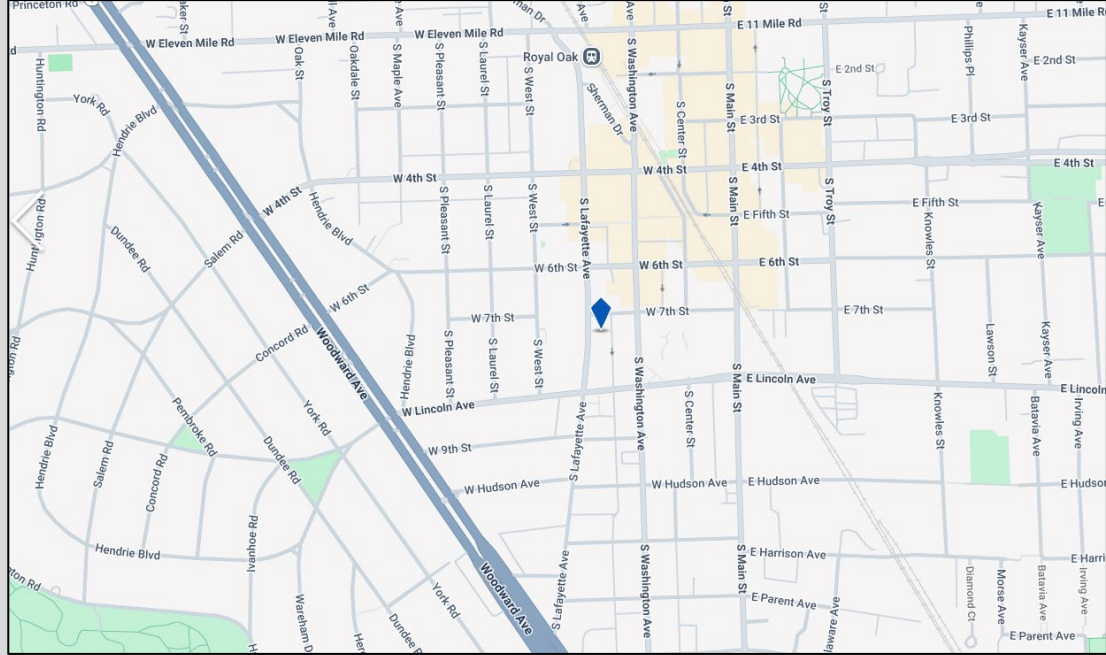
# AVAILABLE SUITES



SPACES			
SUITE	SIZE	RENTAL RATE	SPACE USE
1 <sup>st</sup> Floor, Ste 100	2,000 SF	\$25.00 /SF/YR	Office
1 <sup>st</sup> Floor, Ste 130	3,400 SF	\$25.00 /SF/YR	Office
1 <sup>st</sup> Floor, Ste 180	1,700 SF	\$25.00 /SF/YR	Office



# 333 W 7<sup>th</sup> Street



333 W 7<sup>th</sup> Street

# ADDITIONAL INFORMATION



FOR MORE INFORMATION PLEASE CONTACT:

---



**ARA ATESIAN**

Agent, Property Manager  
[ara@atesian.net](mailto:ara@atesian.net)

**248-709-8966**



2271 Cole Street  
Birmingham, MI 48009  
248-362-2870

