



FOR LEASE

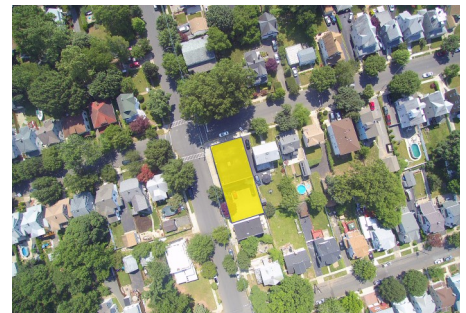
**OFFICE/
RETAIL**

7,000 SF

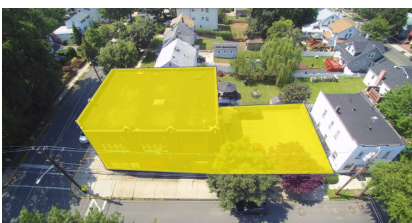
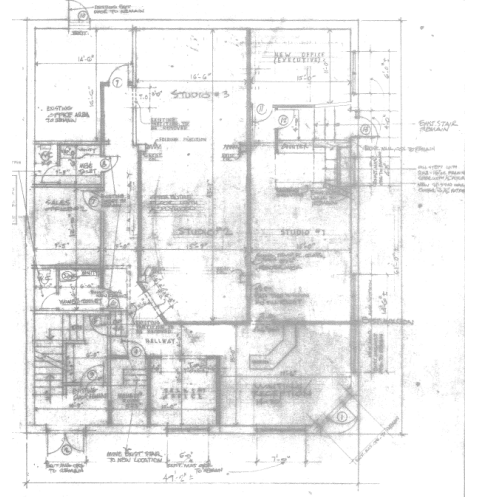
107 Central Ave

Ridgefield Park, NJ

1,700 SF \$3,500/mo



- ◆ Build to Suit/Storefront Retail/Office
- ◆ Corner Brick Building with Parking
- ◆ High Ceilings and Open Floor Plans
- ◆ Great for Gym, Art Studio, Engineering Firm, Law Firm, Electrical Contractors, Etc.
- ◆ Fully Building offers 7,000 SF
- ◆ Minimum Space 3,000 per floor plus 1,000 in basement



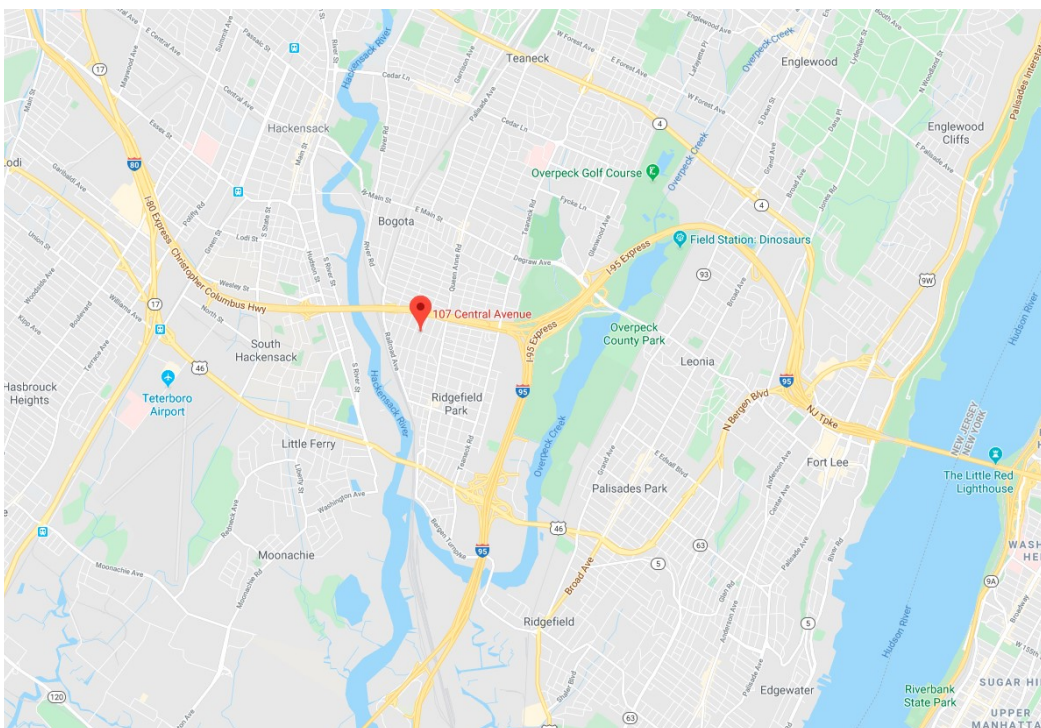
Corrado Belgiovine | 201-420-1300

CBelgovine@alexandergroupnj.com

65 Irving Street, Suite #3 | Jersey City, NJ



107 Central Ave, Ridgefield Park, NJ



Corrado Belgiovine

Office: 201-420-1300

Mobile: 201-6945-1586

