

**BOUNDARY SURVEY  
FOR TOM ZINK**

**LOT 12 & 13 BLOCK 1 PLAT OF OCEANLAKE #2  
IN THE SW 1/4 OF THE NE 1/4 OF SECTION 11  
TOWNSHIP 7 SOUTH, RANGE 11 WEST, WM  
IN LINCOLN CITY, LINCOLN COUNTY, OREGON**

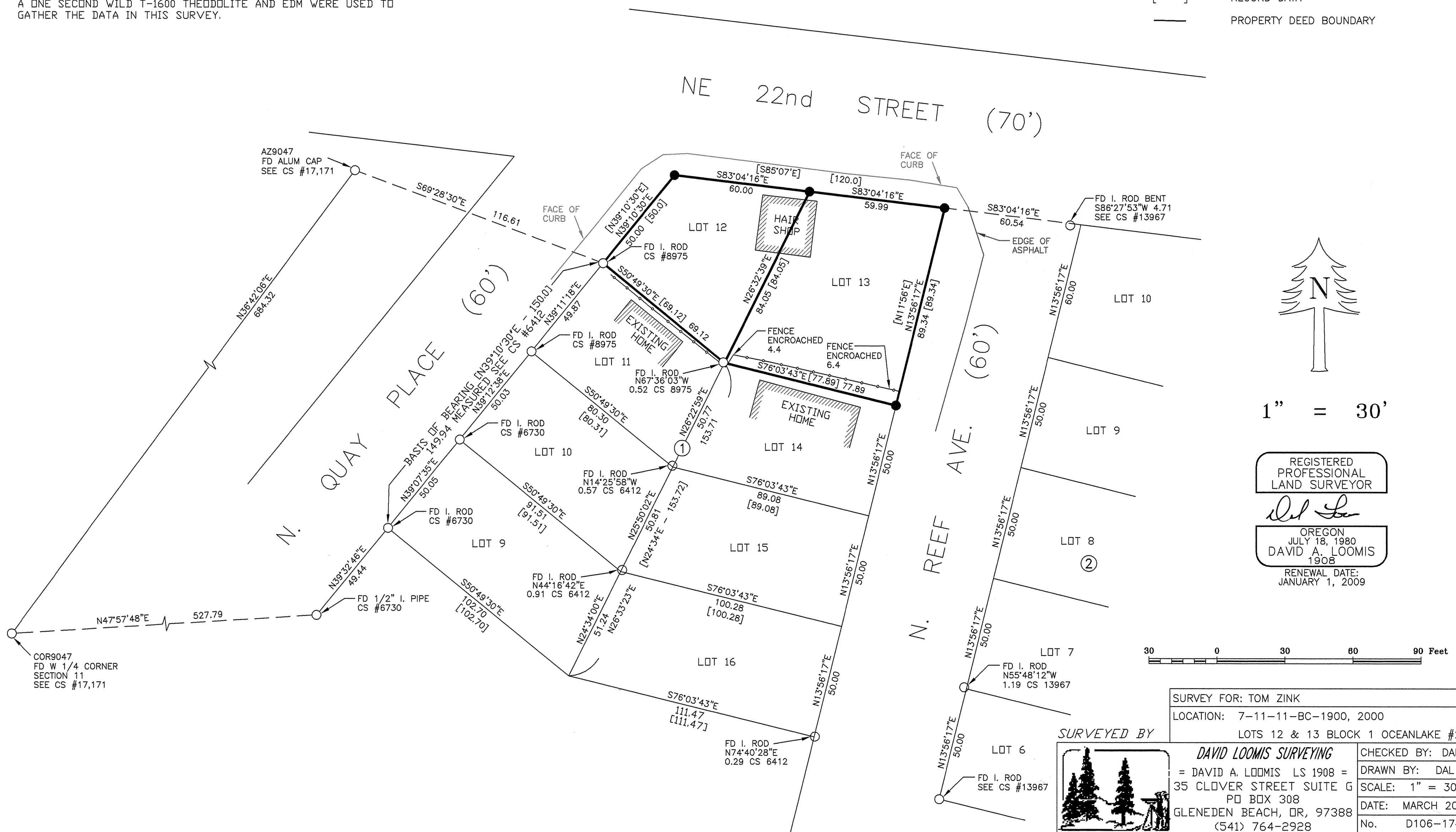
c.s. # 18057  
FILED 1 MAY 2007  
LINCOLN COUNTY SURVEYOR

**SURVEYOR'S NARRATIVE**

THIS SURVEY WAS DONE TO MARK THE BOUNDARY OF LOTS 12 & 13 AND TO SHOW THE LOCATION OF AN EXISTING STRUCTURE WHICH IS LOCATED ON THE LOTS. THE EXISTING MONUMENTS FROM PREVIOUS SURVEYS WERE LOCATED AND HELD FOR CONTROL AS THEY HAVE BEEN RELIED ON FOR MANY YEARS. THE NORTHEAST CORNER OF BLOCK ONE WAS SET USING THE FOUND MONUMENTS AND KEEPING THE EDGES OF REEF AVE PARALLEL EVEN THOUGH IT IS SLIGHTLY NARROW. THE NORTHWEST CORNER OF BLOCK ONE WAS SET AT RECORD DISTANCE FROM THE SOUTHWEST CORNER OF LOT 12. THE CORNER BETWEEN LOTS 12 & 13 WAS THEN SET PROPORTIONATE DISTANCE BETWEEN THE BLOCK CORNERS. A ONE SECOND WILD T-1600 THEODOLITE AND EDM WERE USED TO GATHER THE DATA IN THIS SURVEY.

**LEGEND**

- FOUND SURVEY MONUMENT AS SHOWN
- SET 5/8" x 30" IRON ROD WITH A PLASTIC CAP "LOOMIS PLS 1908"
- CALCULATED POSITION ONLY
- [ ] RECORD DATA
- PROPERTY DEED BOUNDARY

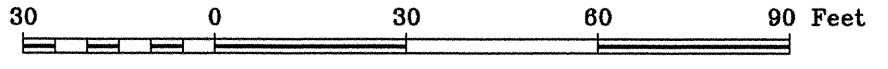


REGISTERED  
PROFESSIONAL  
LAND SURVEYOR

*David A. Loomis*

OREGON  
JULY 18, 1980  
DAVID A. LOOMIS  
1908

RENEWAL DATE:  
JANUARY 1, 2009



SURVEY FOR: TOM ZINK	
LOCATION: 7-11-11-BC-1900, 2000	
LOTS 12 & 13 BLOCK 1 OCEANLAKE #2	
SURVEYED BY	CHECKED BY: DAL
DAVID LOOMIS SURVEYING	DRAWN BY: DAL
= DAVID A. LOOMIS LS 1908 =	SCALE: 1" = 30'
35 CLOVER STREET SUITE G	DATE: MARCH 2007
PO BOX 308	No. D106-174
GLENEDEN BEACH, OR, 97388	
(541) 764-2928	

