

# 19 REV NAZARENO PROPERZI WAY

SOMERVILLE, MA



OFFICE, R&D, & FLEX SPACE FOR SUBLEASE



CUSHMAN &  
WAKEFIELD

## PROPERTY DETAILS

Suite | Floor 1 - 3,467 SF

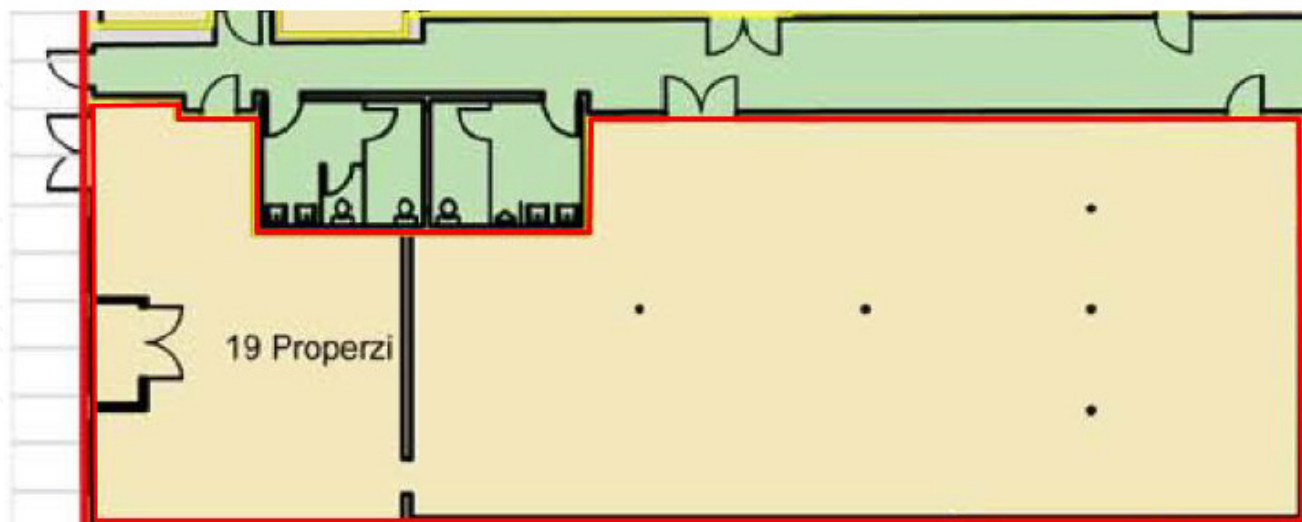
Type | Sublease

Rent | Negotiable

Term | Through Oct 2025

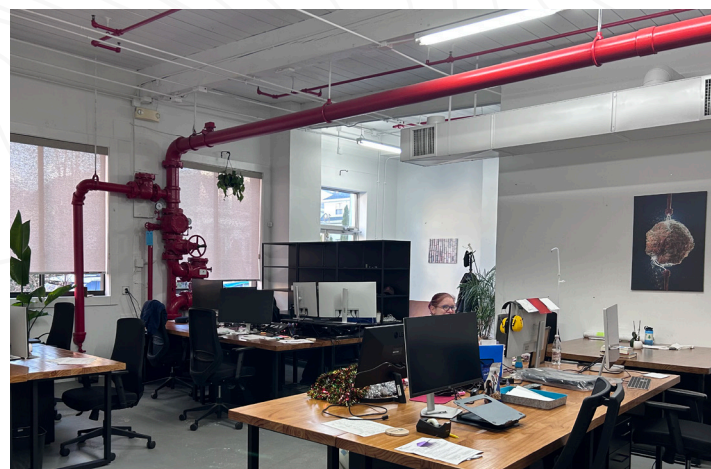
Occupancy | Immediate

Dynamic 3,467 SF flex space in the heart of Somerville, ideal for tough tech innovators or agile teams seeking a short-term sublease. This versatile, light-filled space offers a mix of functionality and creativity, perfect for prototyping, collaboration, or office use. Conveniently located with easy access to local amenities, this is a rare opportunity to secure a vibrant workspace tailored to your evolving needs. There is also an opportunity to extend on a direct basis at the end of the sublease term.





# SPACE PHOTOS



## CONTACT INFORMATION

**JETHRO KOLLIE**  
+1 617 505 0396  
jethro.kollie@cushwake.com

**DAVID THOMANN**  
+1 781 492 2406  
david.thomann@cushwake.com

125 High Street, 24th Floor  
Boston, MA 02110  
[cushmanwakefield.com](http://cushmanwakefield.com)

