

# Eagles Landing Lakeland, FL

## Development Sites For:

- Restaurants
- Hotel
- Office

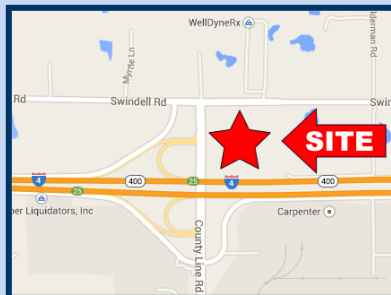
## ADT Counts:

- Interstate 4: 110,000
- County Line Rd: 22,200
- U.S. 92: 9,900

Over 8,095 Employees  
Within 2 Miles of the Site

Over 8.8 Million People  
Within a 100 Mile Radius

**Located on a Full  
Interchange at I-4**



# Interchange Activity Center *Located on Interstate 4*



**100 Eagles Landing Drive, Lakeland, FL 33810**



**Contact: David A. Buckner, SIOR**

Office: (863) 686-7770 | Mobile: (863) 640-8843

E-mail: [david@bucknercommercial.com](mailto:david@bucknercommercial.com) | Website: [www.bucknercommercial.com](http://www.bucknercommercial.com)

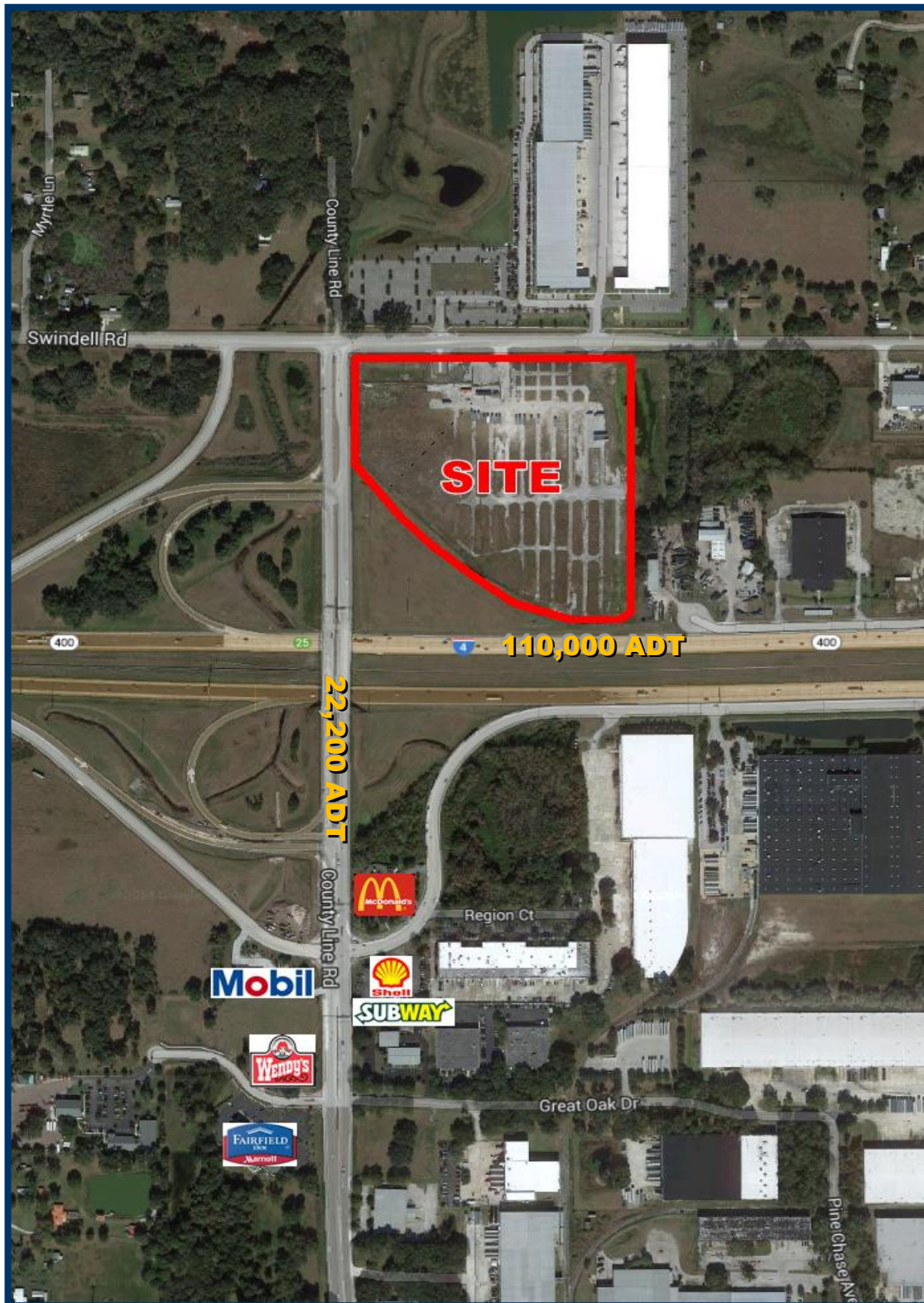
Information concerning this offer is from sources deemed reliable, but no warranty is made as to the accuracy thereof.



**Eagles Landing Business Park**  
**100 Eagles Landing**  
**Lakeland, Florida 33810**

**BUCKNER**  
**COMMERCIAL PROPERTIES**

## Existing Retail



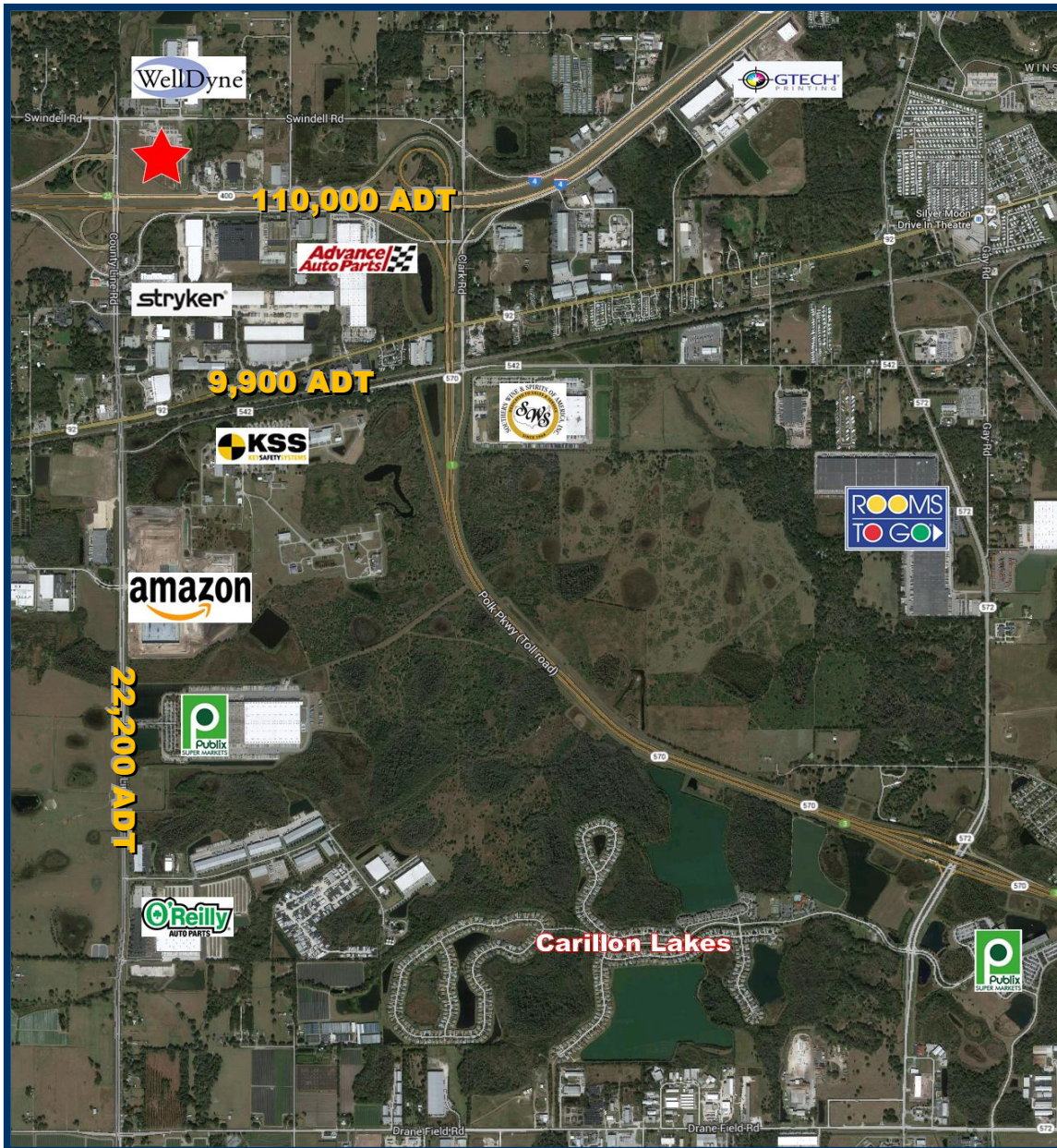
Information concerning this offer is from sources deemed reliable, but no warranty is made as to the accuracy thereof.



# Eagles Landing Business Park

100 Eagles Landing  
Lakeland, Florida 33810

BUCKNER  
COMMERCIAL PROPERTIES



## MAJOR EMPLOYERS

WellDyneRx	550	Rooms to Go	900
Stryker	615	Amazon Fulfillment Center	400/800+
Advanced Auto Parts	480	Publix Distribution	550
Key Safety Systems	500	O'Reilly Auto Parts	400
Southern Wine and Spirits	400	Publix Corporate Headquarters	3,000
GTECH	300	<b>TOTAL</b>	<b>8,095+</b>

## RESIDENTIAL

Carillon Lakes	650 Homes
----------------	-----------

Information concerning this offer is from sources deemed reliable, but no warranty is made as to the accuracy thereof.