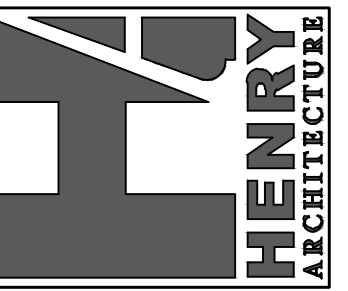


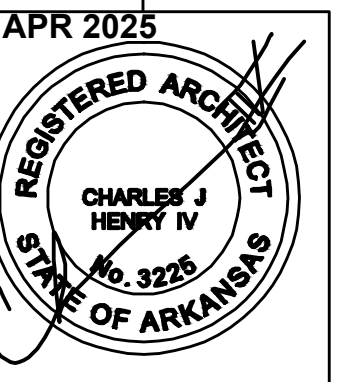
# HAWKS LANDING III

# JOHNSON, ARKANSAS



**HENRY ARCHITECTURE**  
1722 N COLLEGE AVE., SUITE C - BOX 153  
FAYETTEVILLE, AR 72703  
PHONE - 479 530-9693 EMAIL: chenty@henryarchitecture.com

DRAWN BY: MDS-EM  
CHECKED BY: CJH4



JOB # 25-007

JOHNSON, AR

PERMIT SET 17 APR 2025

**HAWKS LANDING III**  
**COVER, LEGEND AND INDEX**  
DATE: 17 APR 2025

**C1.1**

ABBREVIATIONS		MATERIALS LEGEND		REFERENCE SYMBOLS	
ARFF	ABOVE REFERENCE FINISH FLOOR		COMPACTED FILL	<b>GENERAL NOTE</b>	<b>ELEVATION</b>
BM.	BEAM		UNDISTURBED EARTH	NOTE LETTER (A)	"XXX"-X" X.X.X.
BRFF	BELOW REFERENCE FINISH FLOOR		CRUSHED STONE	<b>ELEVATION</b>	<b>REVISIONS</b>
C.J.	CONTROL JOINT		CONCRETE (SECTION)	DRAWING NO. / SHEET NO. X/AX.X	REVISION NUMBER (X)
EL.	ELEVATION		CONCRETE (PLAN)	<b>BUILDING SECTION</b>	<b>FRAME (WINDOW)</b>
E.J.	EXPANSION JOINT		BRICK	DRAWING NO. / SHEET NO. X/AX.X	FRAME TYPE (XX)
FDN.	FOUNDATION		STONE	<b>WALL SECTION</b>	<b>FOOTING ELEV.</b>
F.F.	FINISH FLOOR		CONCRETE BLOCK	DRAWING NO. / SHEET NO. X/AX.X	TOP OF FTG FTG. ELEV. 00.00
F.O.B.	FACE OF BRICK		GLAZED FACE CONCRETE BLOCK	<b>ENLARGED DETAIL</b>	<b>ROOM NUMBER</b>
F.O.S.	FACE OF STUD		MORTAR - GROUT	DRAWING NO. / SHEET NO. (XX) A.X.X	ROOM NAME ROOM NUMBER (101)
FTG.	FOOTING		LARGE SCALE METAL	<b>GENERAL EQUIPMENT</b>	<b>PARTITION TYPE</b>
G.C.	GENERAL CONTRACTOR		SMALL SCALE METAL	ACCESSORY NO. - SEE PLAN OR SECTION (XXX)	(X)
J.B.	JOIST BEARING		METAL STUD PARTITION	<b>GRID LINE</b>	<b>DOOR</b>
MBM	METAL BUILDING MANUFACTURER		WOOD STUD PARTITION	(X)	(XX) DOOR NUMBER
N.I.C.	NOT IN CONTRACT		WOOD - ROUGH (CONTINUOUS)		
N.T.S.	NOT TO SCALE		WOOD - ROUGH (BLOCKING)		
R.D.	ROOF DRAIN		WOOD - FINISH		
RTU	ROOF TOP UNIT		RIGID INSULATION		
SIM.	SIMILAR		BATT INSULATION		
S.J.	SAWED JOINT		LOOSE FILL INSULATION		
STD.	STANDARD		PLASTER OR STUCCO		
T.O.B.	TOP OF BEAM		GYPSUM BOARD		
T.O.C.	TOP OF CURB		PLYWOOD		
T.O.F.	TOP OF FOOTING		GLASS		
T.S.	THICKENED SLAB		ACOUSTIC CEILING TILE		
T.W.	TOP OF WALL				
TYP.	TYPICAL				
V.C.J.	VERTICAL CONTROL JOINT				
V.T.R.	VENT THRU ROOF				

**GENERAL NOTES**

- THESE DRAWINGS HAVE BEEN DEVELOPED UNDER A LIMITED SCOPE OF SERVICE AGREEMENT BETWEEN THE ARCHITECT AND THE OWNER. OWNER IS TO PROVIDE ADDITIONAL INFORMATION AND/OR SPECIFICATIONS AS REQUIRED TO THOROUGHLY DEFINE ALL ITEMS AND AREAS NOT COMPLETELY IDENTIFIED WITHIN THESE DOCUMENTS UNDER THE TERMS OF THIS AGREEMENT.
- ALL CONSTRUCTION MATERIAL, TECHNIQUES AND PERFORMANCE VALUES ARE TO MEET APPLICABLE CODES INDICATED IN "CONSTRUCTION DATA" TABLE LISTED ON THIS SHEET.
- THE GENERAL CONTRACTOR IS RESPONSIBLE FOR INSURING THAT THIS PROJECT IS CONSTRUCTED IN ACCORDANCE WITH THESE DOCUMENTS AND IN COMPLIANCE WITH CODES INDICATED HEREIN. THE QUALITY OF WORKMANSHIP AND INSTALLATION OF MATERIALS SPECIFIED BY THE ARCHITECT ARE THE RESPONSIBILITY OF THE OWNER/CONTRACTOR. THE ARCHITECT WILL NOT BE HELD RESPONSIBLE FOR ANY SUBSTANDARD OR INSUFFICIENT WORKMANSHIP, MATERIALS OR SERVICES PROVIDED IN THE EXECUTION OF ANY PHASE OF CONSTRUCTION OF THIS PROJECT.
- ALL MATERIALS ARE TO BE INSTALLED IN ACCORDANCE WITH MANUFACTURER'S REQUIREMENTS AND ALL SUBCONTRACTORS ARE TO INSURE THAT ALL MANUFACTURERS WARRANTIES WILL BE HONORED.
- THE GENERAL CONTRACTOR IS RESPONSIBLE FOR INSURING THE SAFETY OF ALL PERSONS ON THE JOB SITE AT ALL TIMES, INCLUDING BUT NOT LIMITED TO ALL SUBCONTRACTORS, VENDORS, DESIGN STAFF PROFESSIONALS, AND INSPECTION PERSONNEL.
- ALL INTERIOR FINISHES, CABINETS, FIXTURES, TRIM, ETC. WILL BE SPECIFIED BY THE CONTRACTOR WITH APPROVAL BY THE OWNER (IN ACCORDANCE WITH COMPONENTS AND SYSTEMS USED).

**CONSTRUCTION DATA**

**ADDRESS:** JOHNSON, AR 72758

**BUILDING AREA:** 10,000 SQ. FT.

**OCCUPANCY CLASSIFICATION:** B (BUSINESS)

**OCCUPANCY LOAD:** BUSINESS AREA (ONE PERSON PER 150 SQUARE FEET GROSS) 10,000 SQ. FT/150 = 67 PERSONS

**CONSTRUCTION TYPE:** TYPE OF CONSTRUCTION: TYPE VB, NON-SPRINKLERED

**ALLOWABLE AREA AND HEIGHT:** ALLOWABLE HEIGHT AND BUILDING AREA: GROUP "B"- 2 STORES AND 9,000 SQ. FT. PER FLOOR  
TOTAL PROVIDED = 10,000 SF, ONE-STORY

**APPLICABLE CODES:**

- 2012 ARKANSAS FIRE PREVENTION CODE VOL. 1 (2012 IFC W/ ARKANSAS AMENDMENTS)
- 2012 ARKANSAS FIRE PREVENTION CODE VOL. II - COMMERCIAL (2012 IBC W/ ARKANSAS AMENDMENTS)
- 2012 ARKANSAS FIRE PREVENTION CODE VOL. III - RESIDENTIAL (2012 IRC W/ ARKANSAS AMENDMENTS)
- 2006 ARKANSAS PLUMBING CODE (APC)
- 2010 ARKANSAS MECHANICAL CODE (AMC)
- 2014 NATIONAL ELECTRICAL CODE (NEC)
- 2006 ARKANSAS FUEL GAS CODES (AFGC)
- 2014 ARKANSAS ENERGY CODE (AEC) 2009 ANSI A117.1
- 2012 EXISTING BUILDING CODE
- LIFE SAFETY CODES (LSC) - AS REFERENCED BY IBC
- MOST CURRENT NFPA STANDARDS (IF APPLICABLE)

**INDEX OF DRAWINGS**

**GENERAL**  
C1.1 COVER, LEGEND AND INDEX

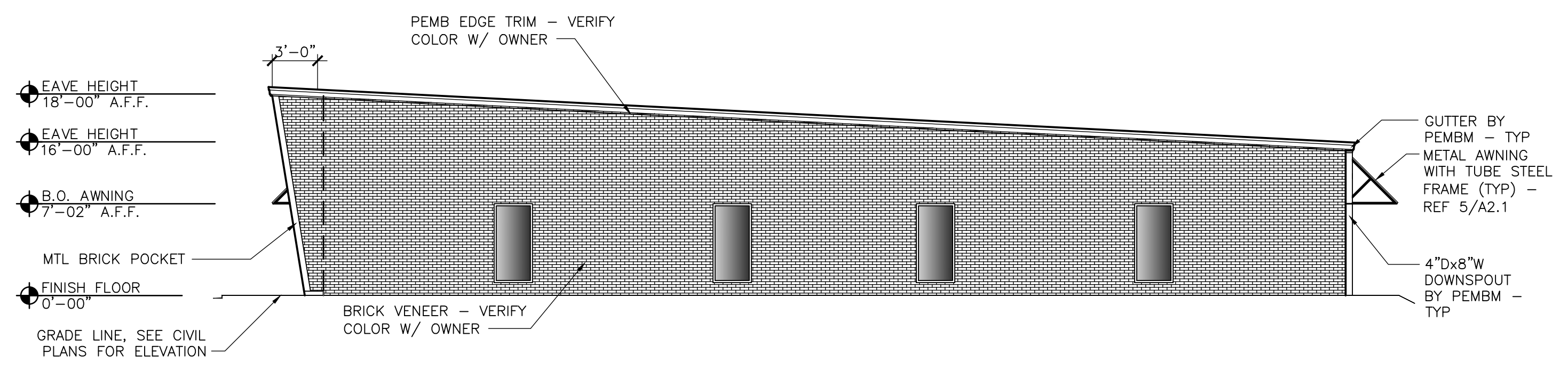
**ARCHITECTURAL**  
A1.1 OVERALL FLOOR PLAN  
A2.1 ELEVATIONS  
A3.1 WALL SECTION AND DUMPSTER DETAILS  
A3.2 BUILDING SECTION & DOOR/WINDOW ELEVATIONS  
LS1.0 LIFE SAFETY PLAN

**MECHANICAL/ELECTRICAL/PLUMBING**  
TO BE COMPLETED BY LICENSED AND BONDED SUB-CONTRACTORS

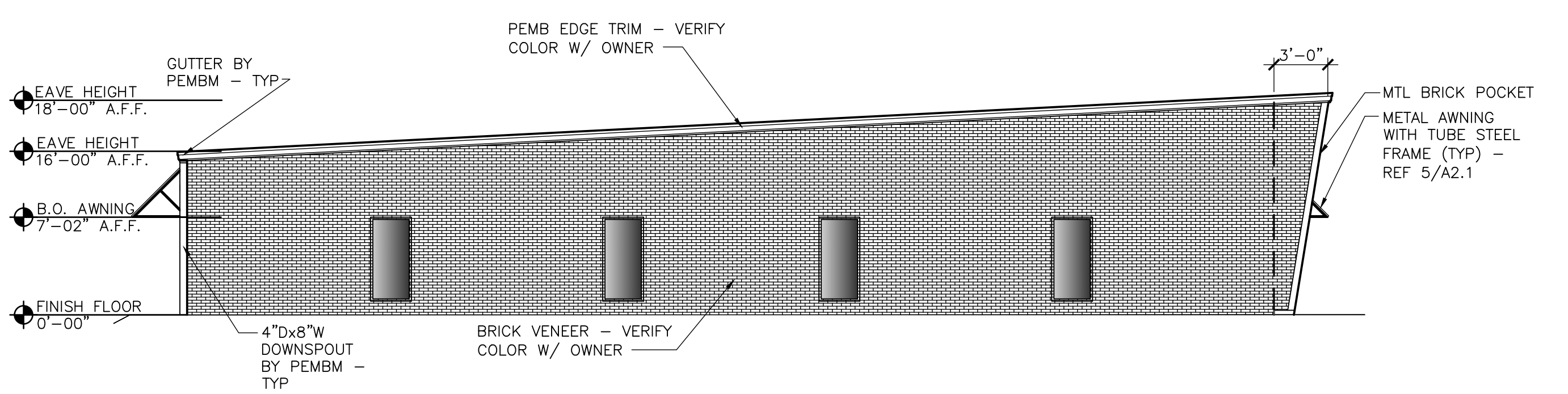
I hereby certify that these plans and specifications have been prepared by me, or under my supervision. I further certify that to the best of my knowledge these plans and specifications are as required by law and in compliance with the Fire Prevention Code for the State of Arkansas

CHARLES J HENRY IV, ARCHITECT

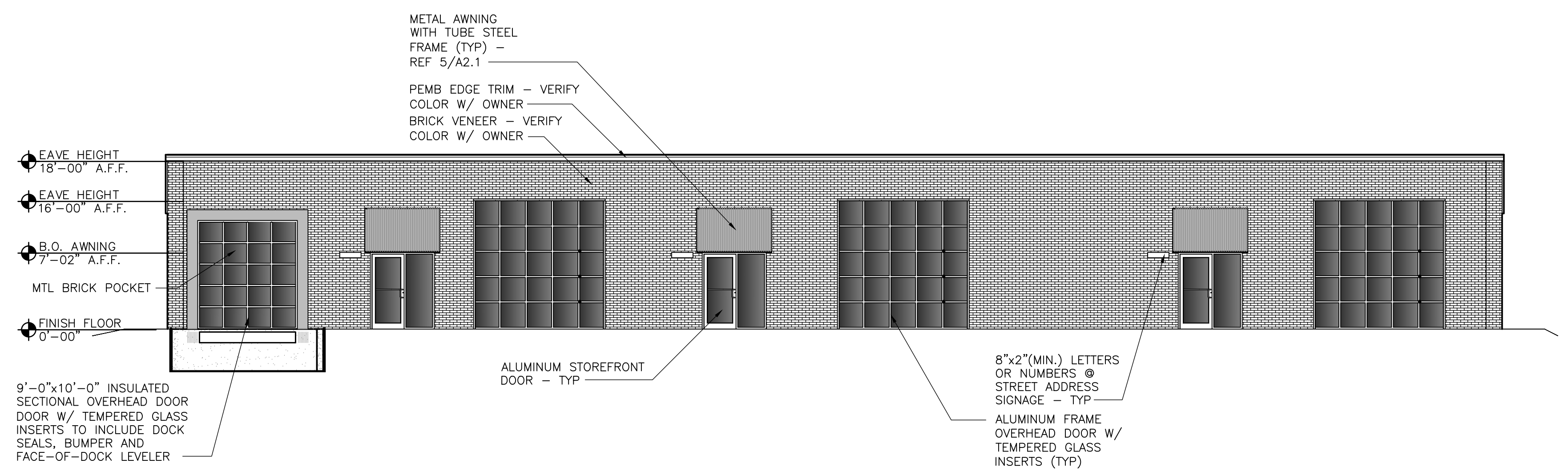




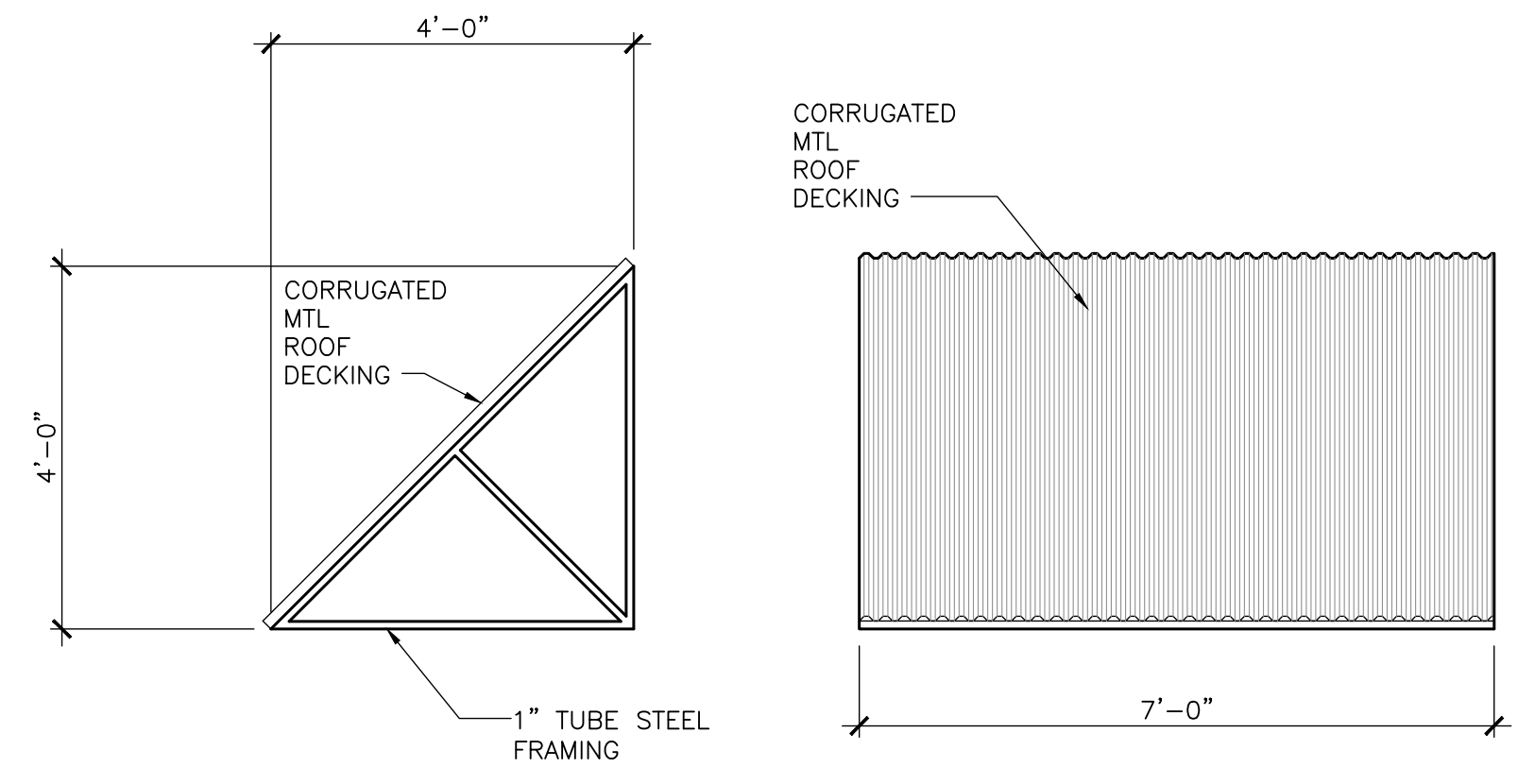
3 EAST ELEVATION  
 SCALE: 1/8" = 1'-0"



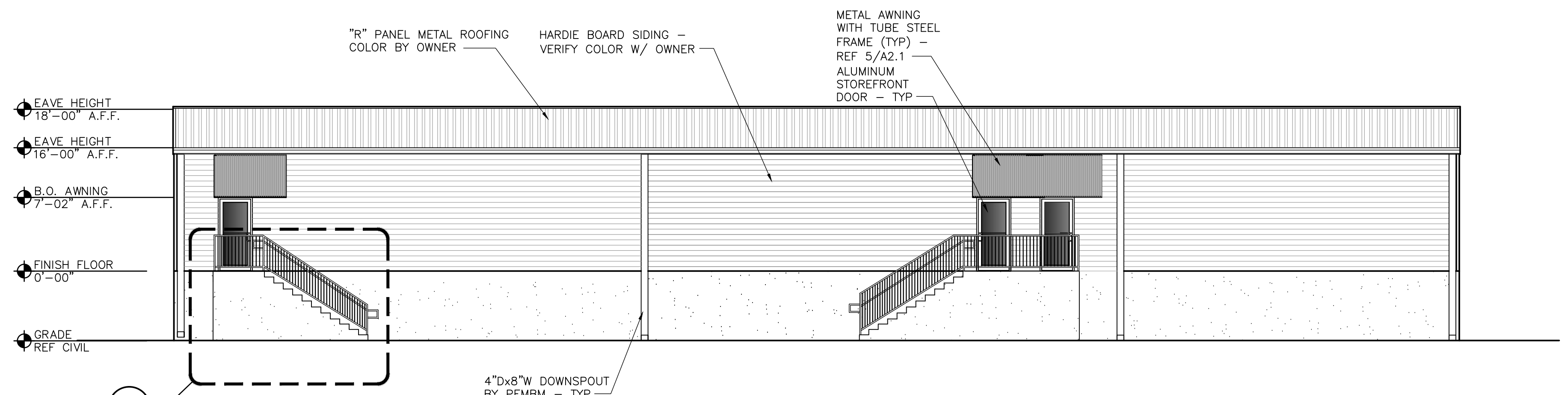
4 WEST ELEVATION  
 SCALE: 1/8" = 1'-0"



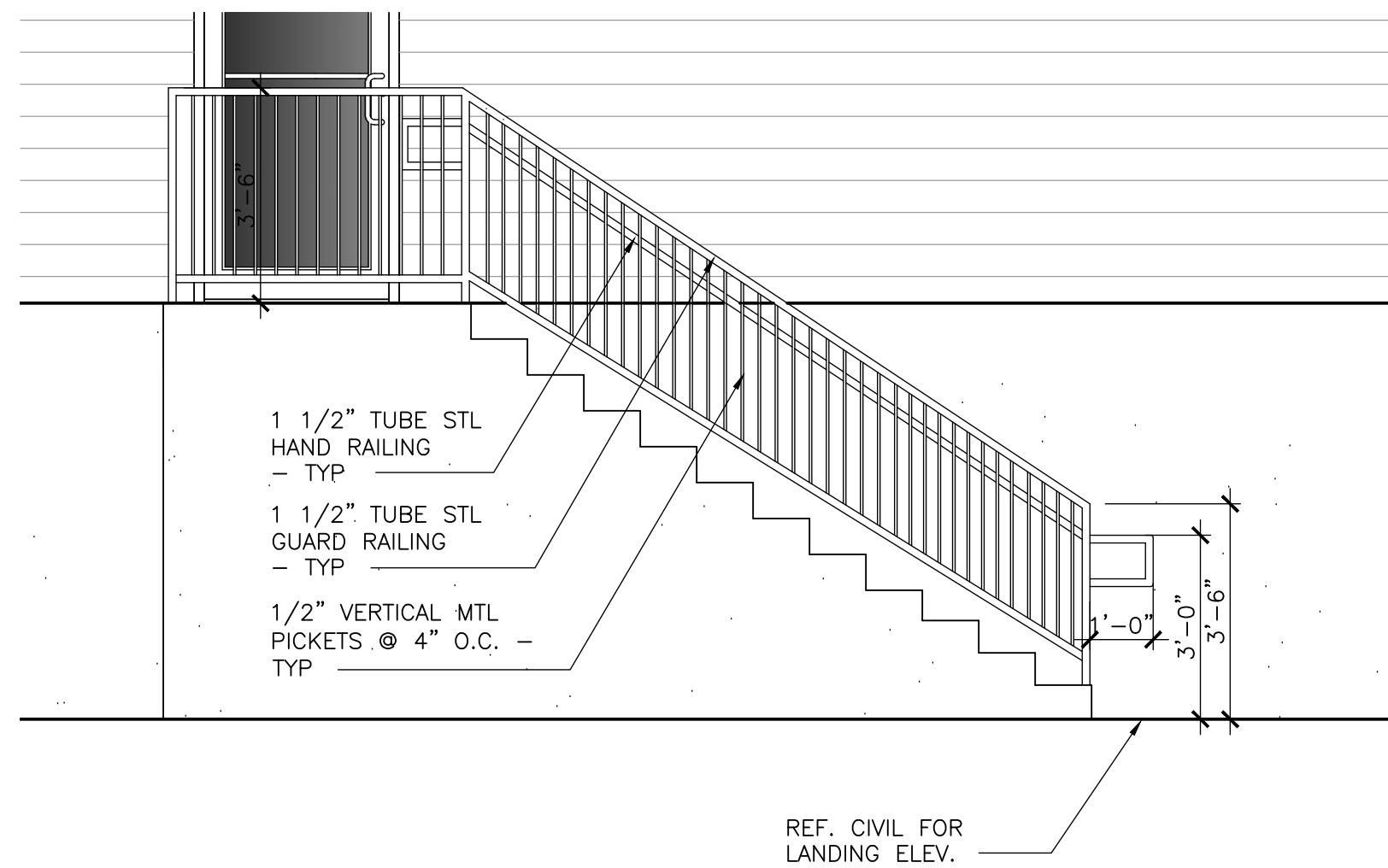
2 NORTH ELEVATION  
 SCALE: 1/8" = 1'-0"



5 AWNING DETAILS  
 SCALE: 1/2" = 1'-0"

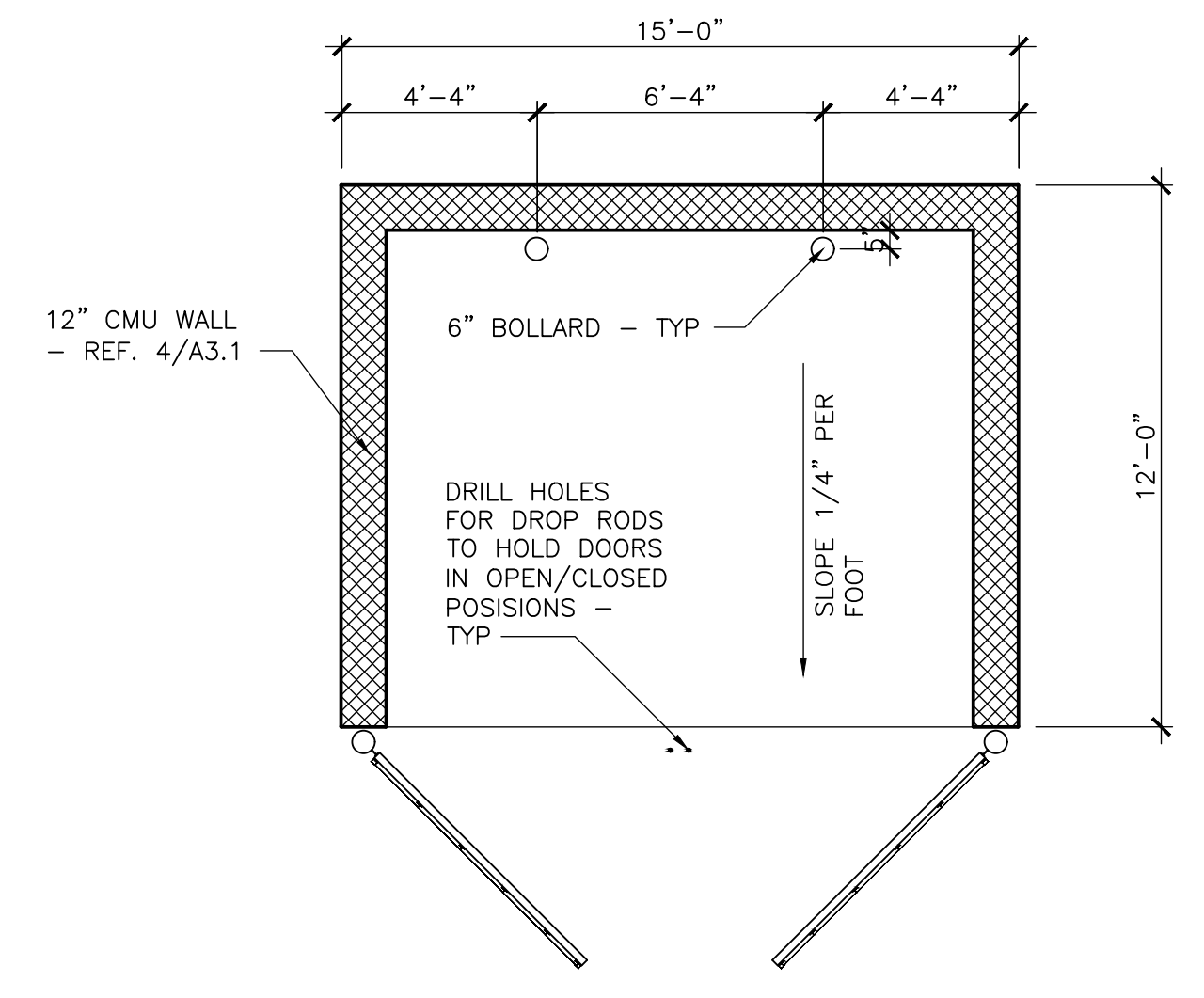


1 SOUTH ELEVATION  
 SCALE: 1/8" = 1'-0"

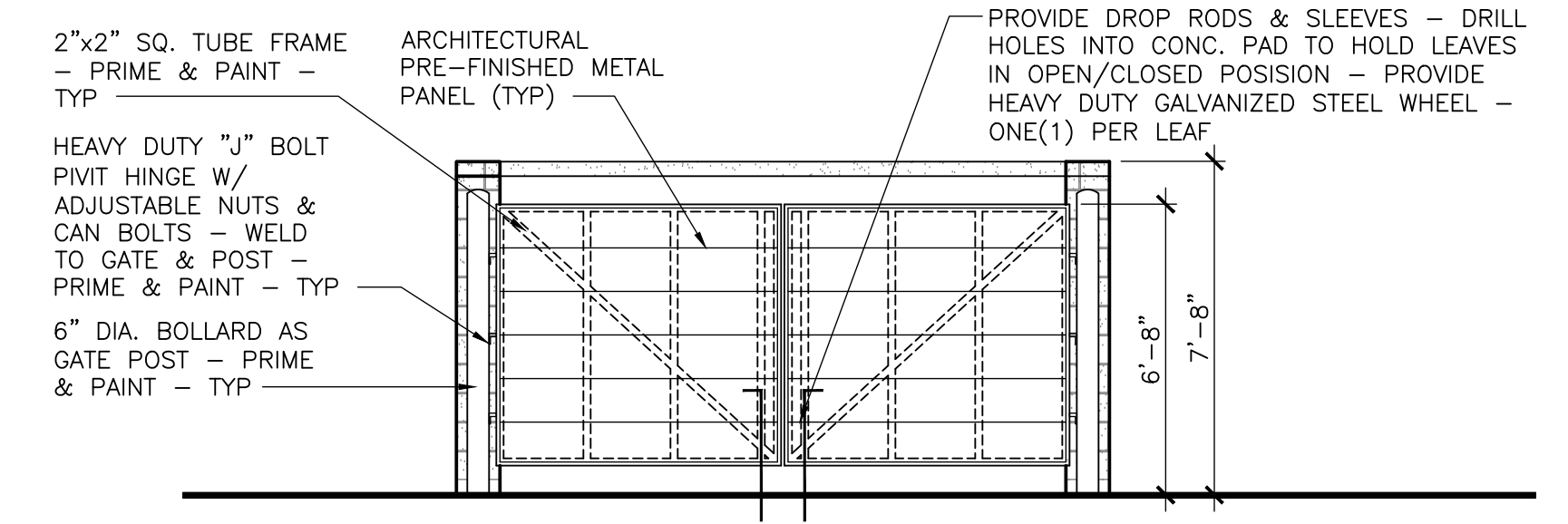


6 STAIR RAILING DETAILS  
 SCALE: 3/8" = 1'-0"

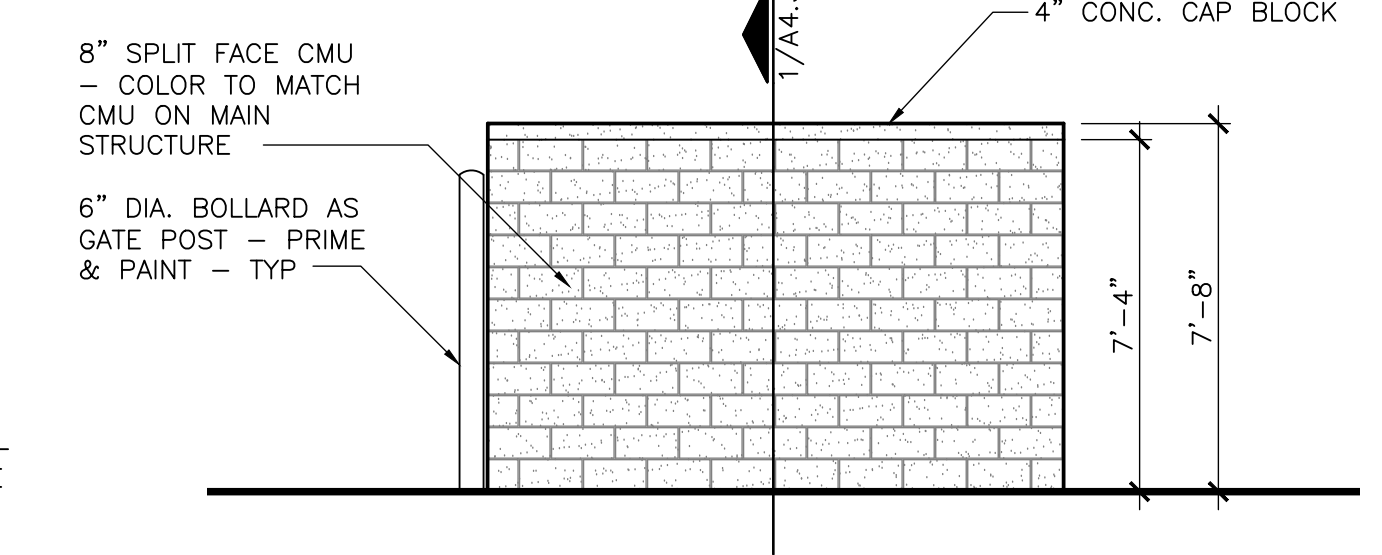
NOTE: REFERENCE CIVIL DRAWINGS FOR DUMPSTER LOCATION AND EXTENT OF REINFORCED CONC. PAD



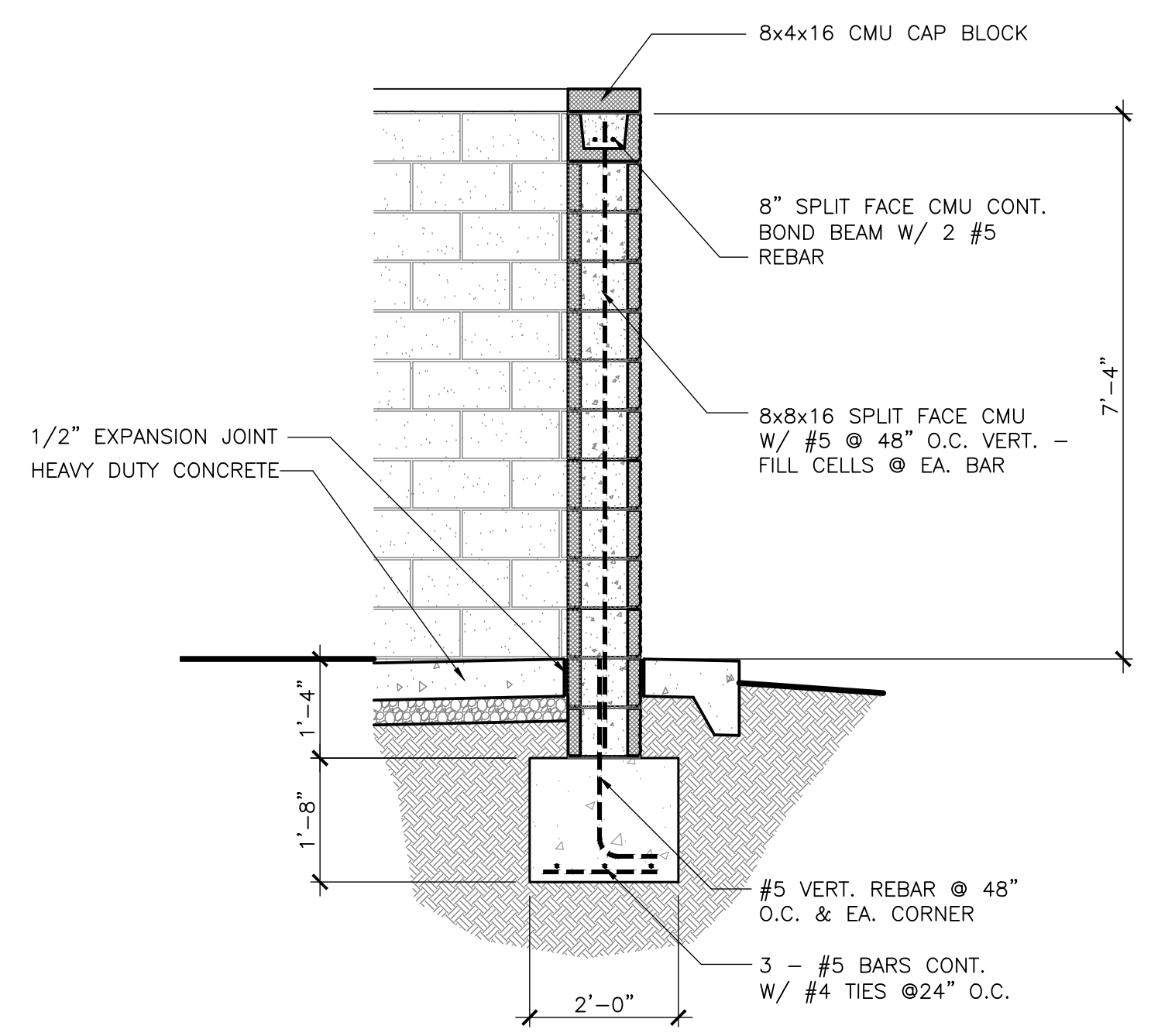
7 DUMPSTER ENCLOSURE PLAN  
 SCALE: 1/4" = 1'-0"



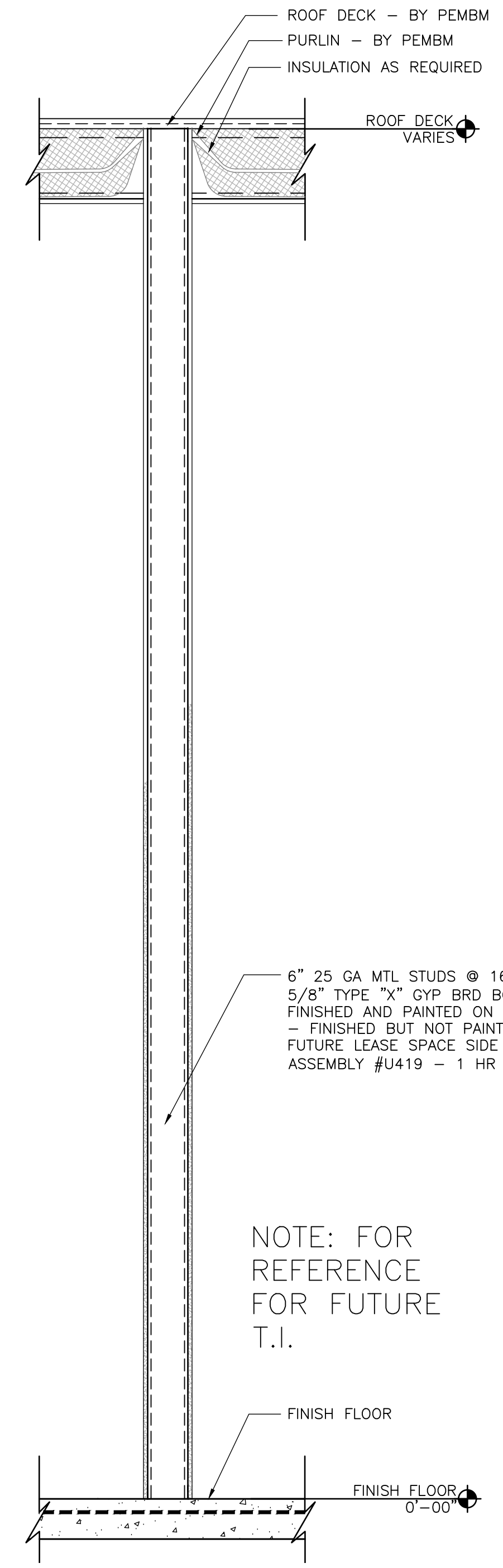
6 DUMPSTER ENCLOSURE ELEV.  
 SCALE: 1/4" = 1'-0"



5 DUMPSTER ENCLOSURE ELEV.  
 SCALE: 1/4" = 1'-0"

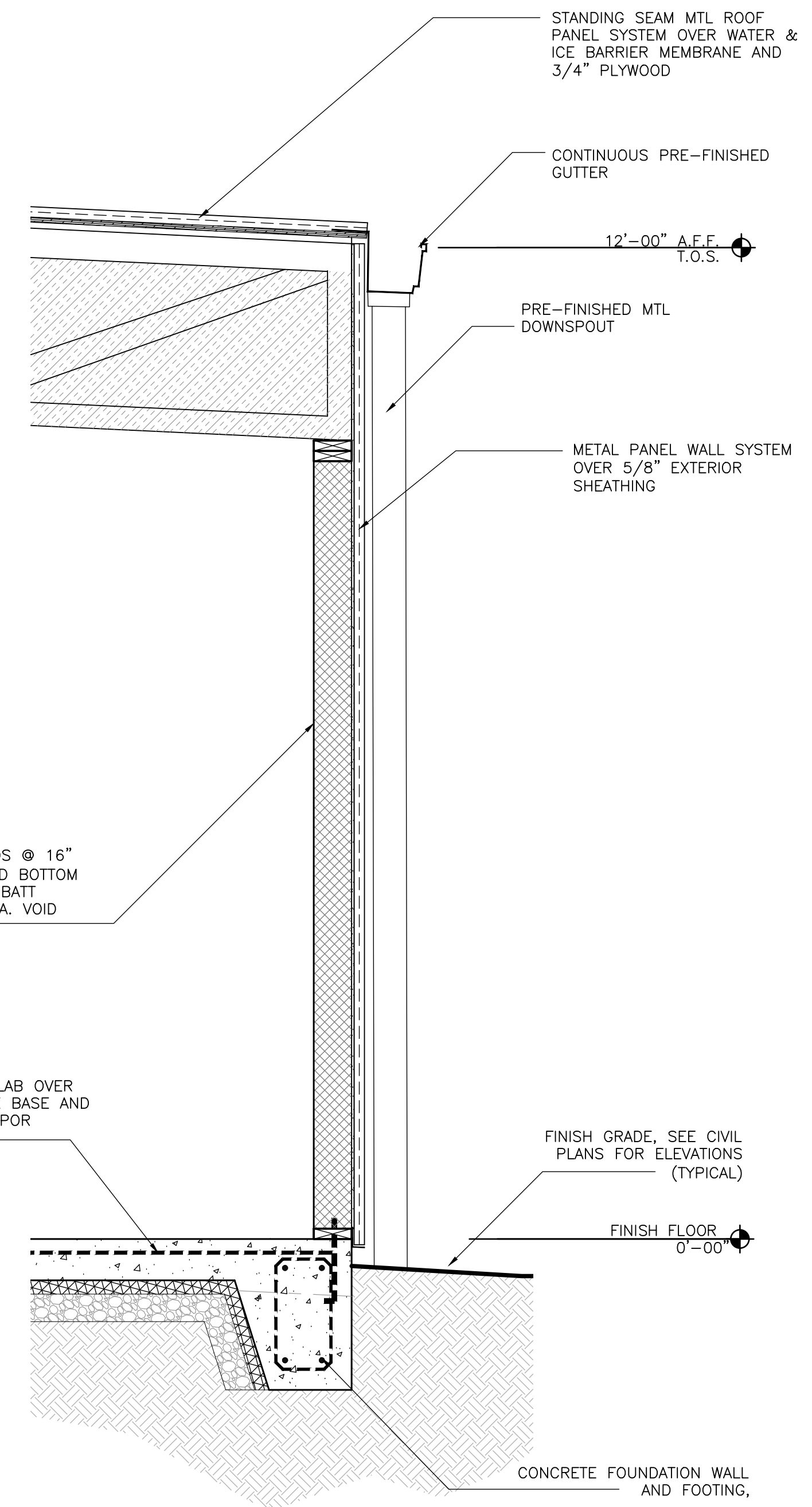


4 DUMPSTER ENCLOSURE SECTION  
 SCALE: 1/2" = 1'-0"

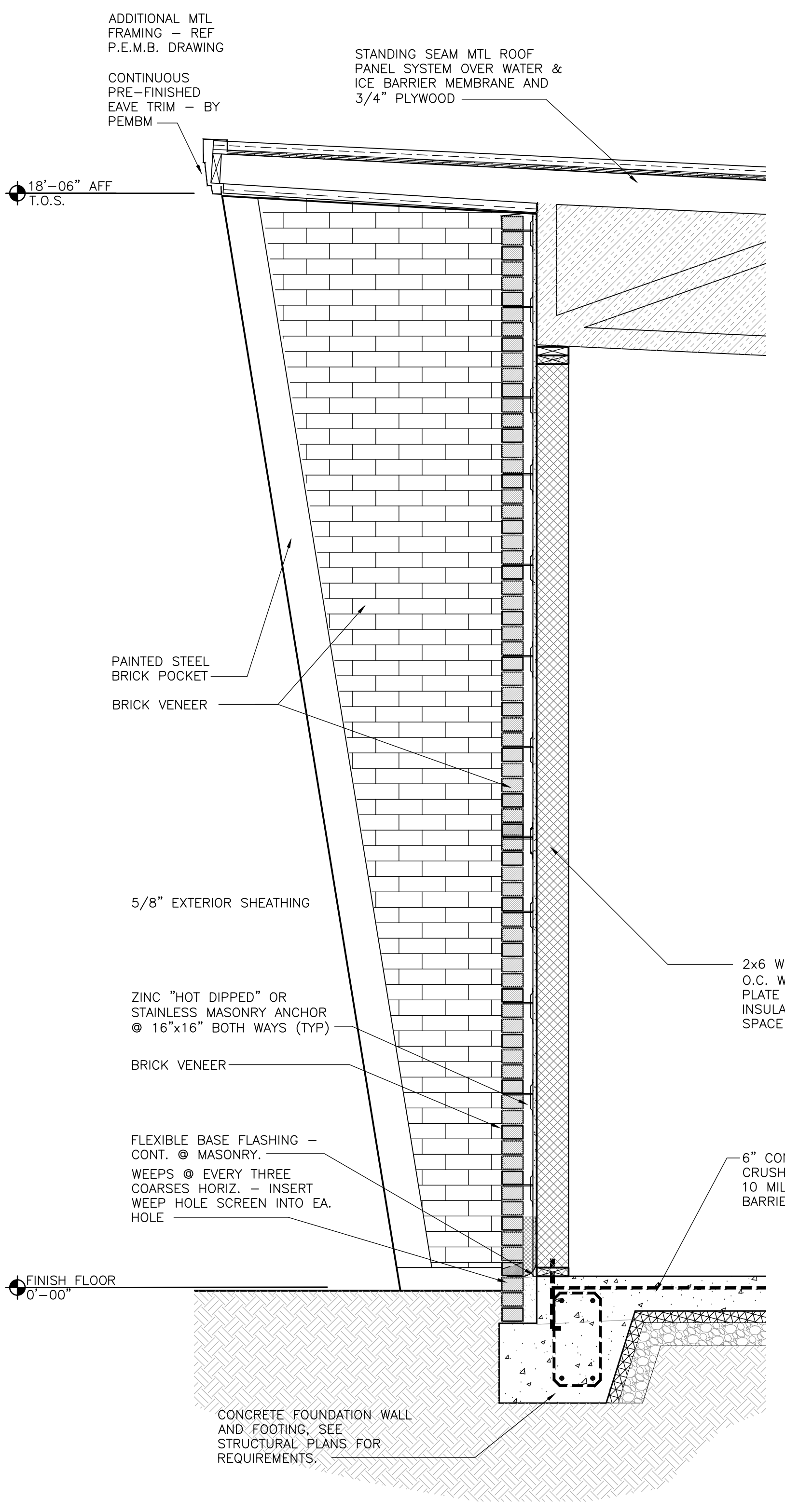


NOTE: FOR REFERENCE FOR FUTURE T.I.

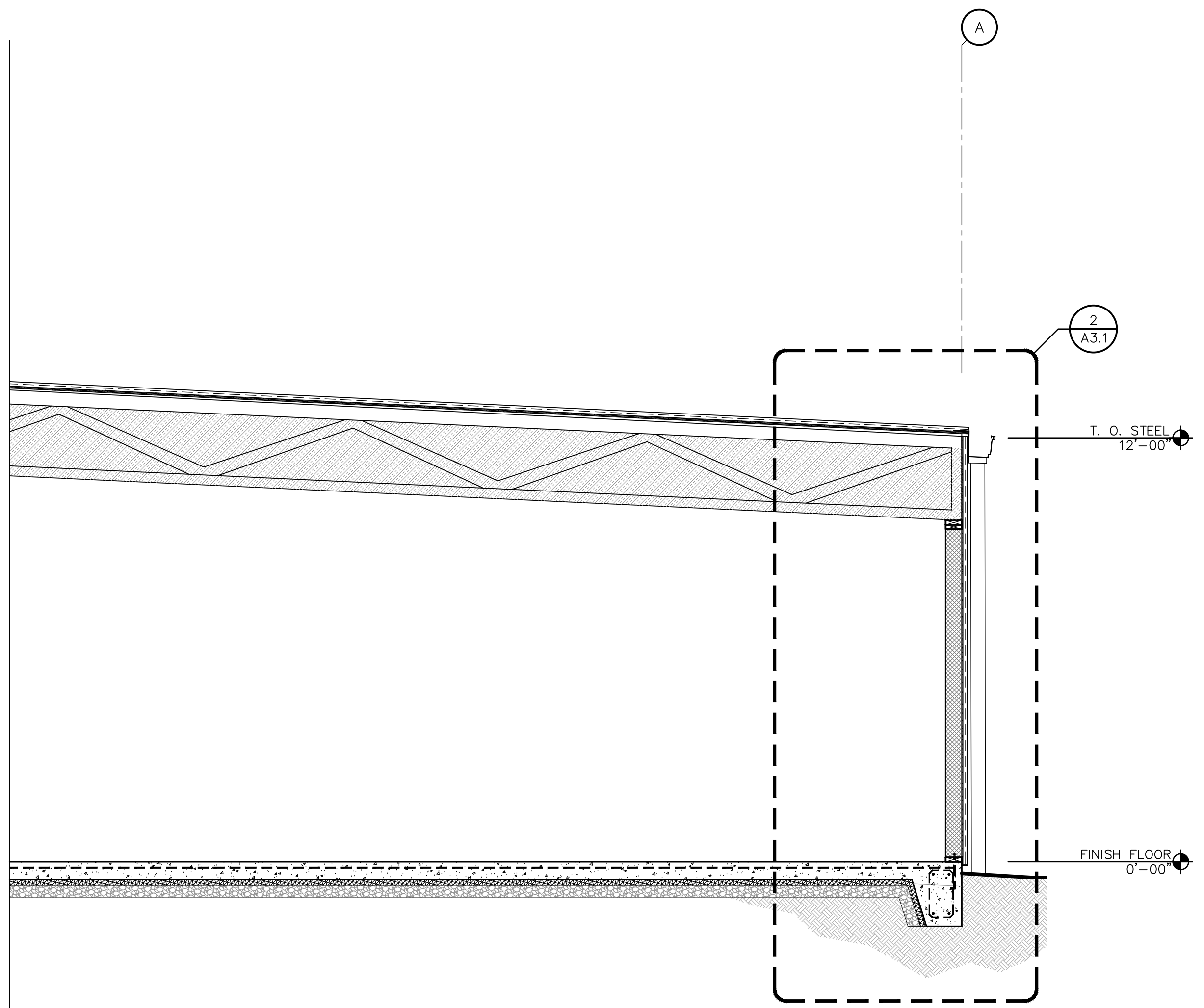
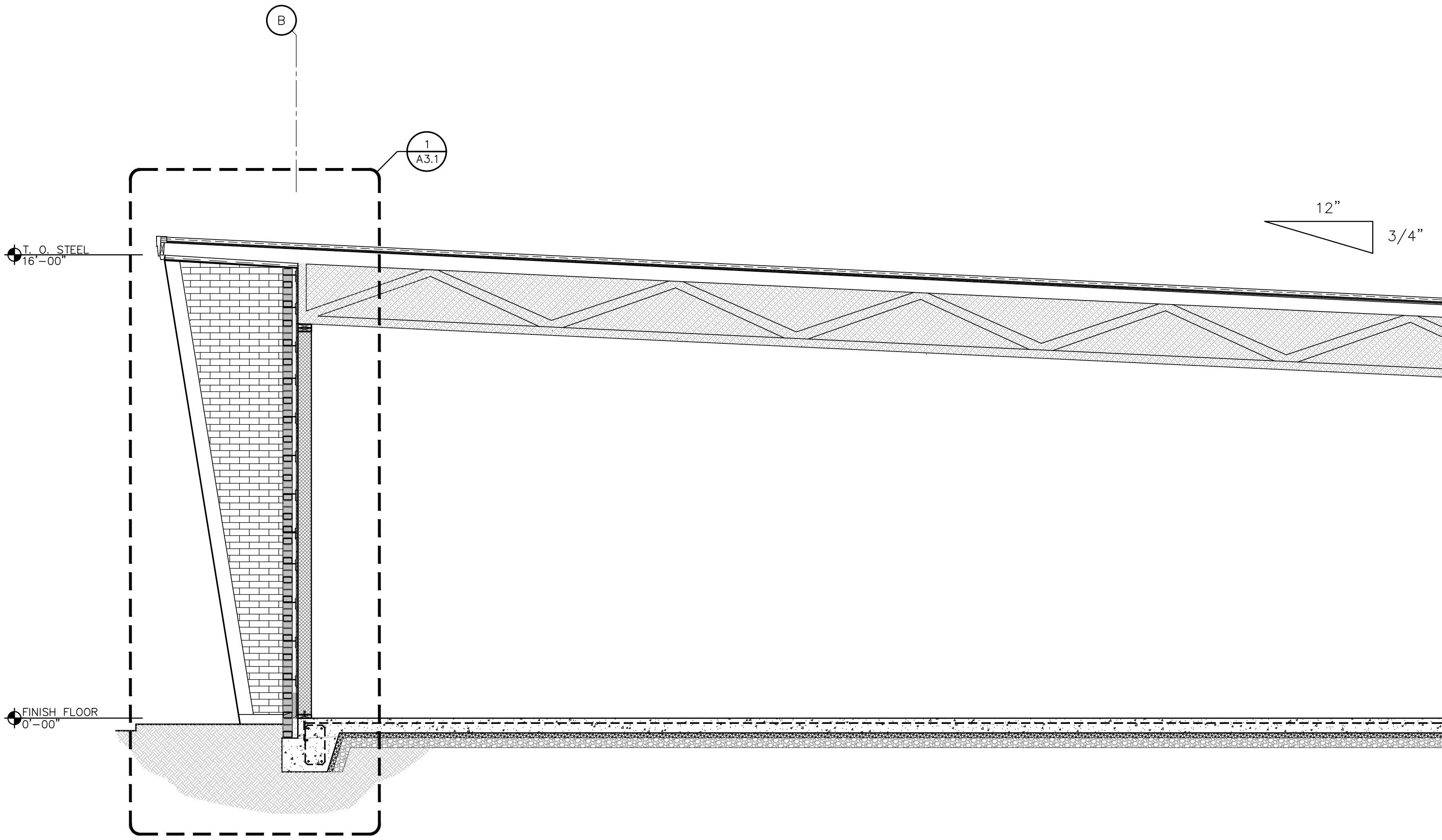
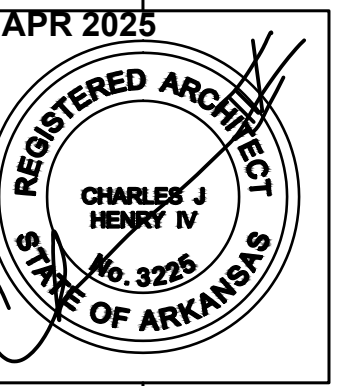
3 DEMISING WALL SECTION  
 SCALE: 3/4" = 1'-0"



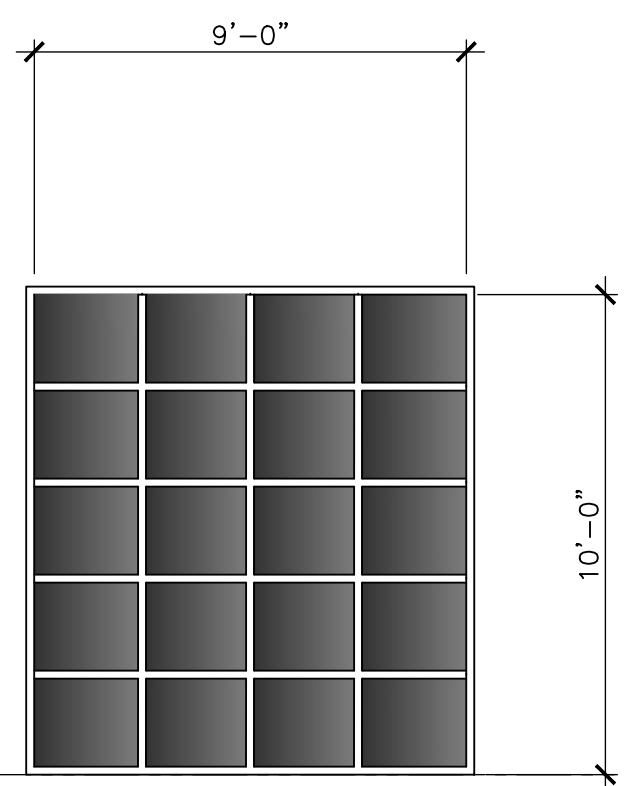
2 WALL SECTION  
 SCALE: 3/4" = 1'-0"



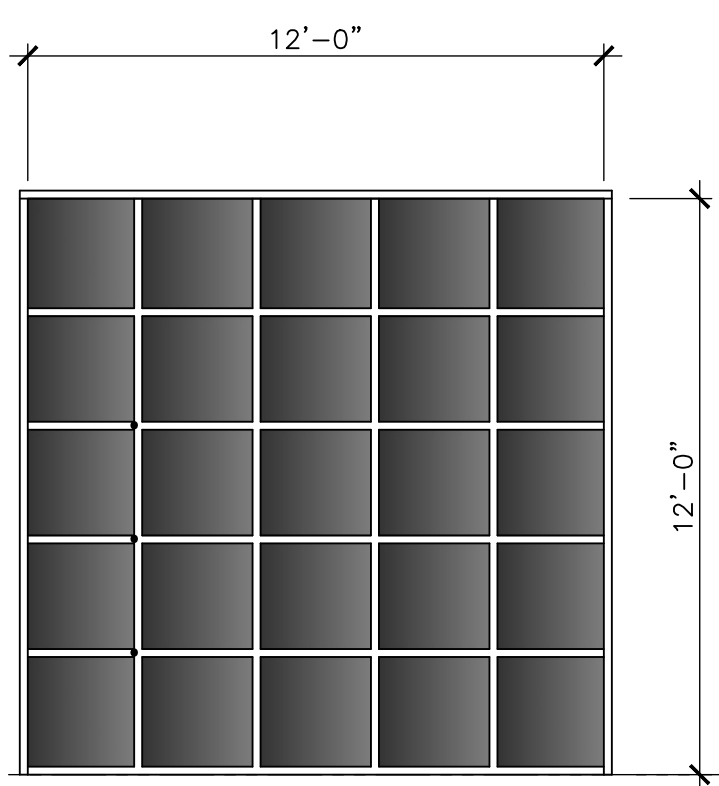
1 WALL SECTION  
 SCALE: 3/4" = 1'-0"



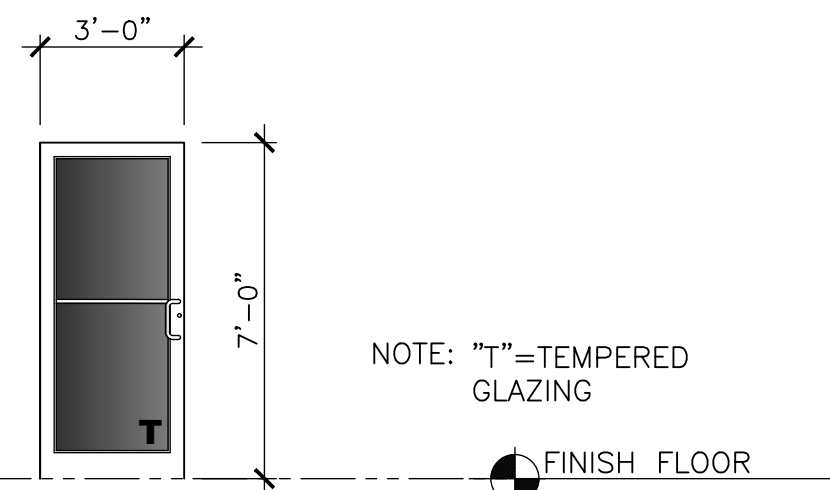
**1 BUILDING SECTION**  
 SCALE: 3/8" = 1'-0"



**3**  
 9'-0"x10'-0" INSULATED SECTIONAL OVERHEAD DOOR W/ FROSTED TRANSLUCENT LITES, AS SHOWN, AND STANDARD-DUTY TRACK, LOCKING SYSTEM AND LIFT OPERATION AS REQUIRED BY OWNER (CHAIN HOIST EMERGENCY LIFT AND COMMERCIAL GRADE MOTOR OPERATOR SYSTEM)



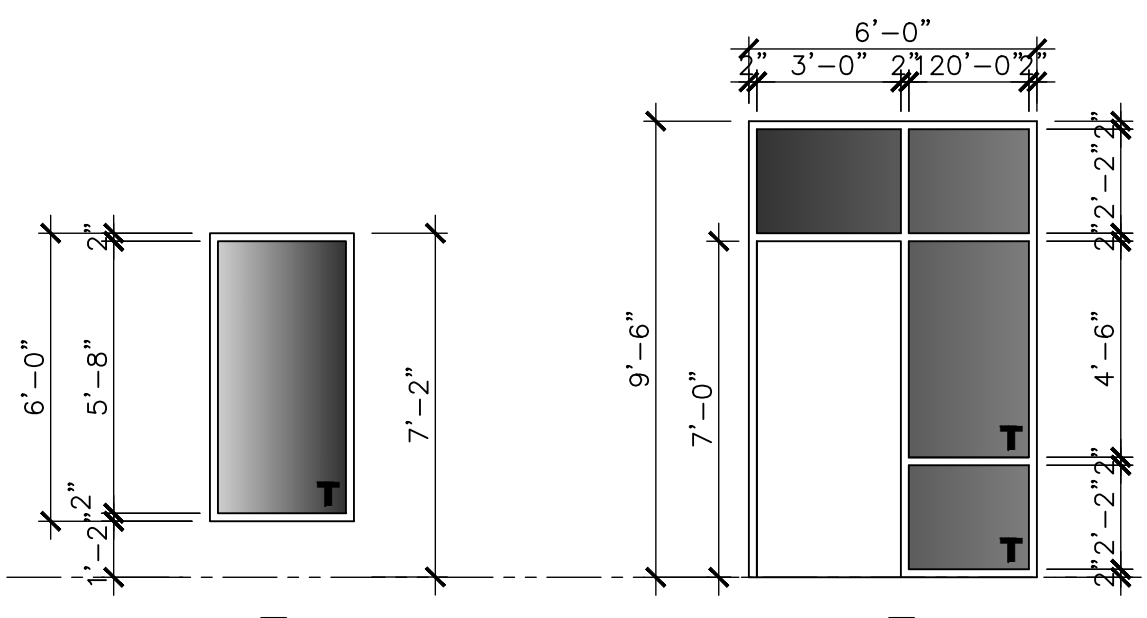
**2**  
 12'-0"x12'-0" INSULATED SECTIONAL OVERHEAD DOOR W/ FROSTED TRANSLUCENT LITES, AS SHOWN, AND STANDARD-DUTY TRACK, LOCKING SYSTEM AND LIFT OPERATION AS REQUIRED BY OWNER (CHAIN HOIST EMERGENCY LIFT AND COMMERCIAL GRADE MOTOR OPERATOR SYSTEM)



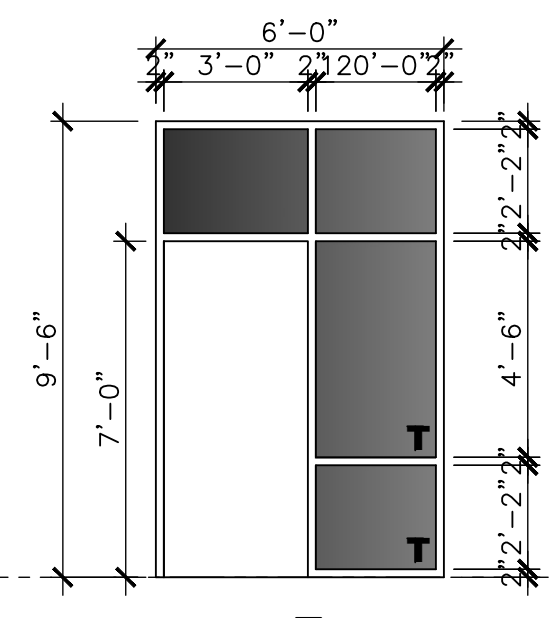
**1**  
 PR. ALUM. STOREFRONT DOOR WITH TEMPERED GLAZING, PANIC EXIT DEVICES, CLOSERS, WEATHERSTRIPPING AND THRESHOLD (INSTALL PANIC HARDWARE @ ALL EXTERIOR DOORS)

**DOOR TYPE ELEV.**

NOTE: "T" = TEMPERED GLAZING



**B**  
 ALUMINUM STOREFRONT FRAME SYSTEM WITH 1" INSULATED GLAZING (TEMPERED WHERE SHOWN) AND THERMAL BREAK.



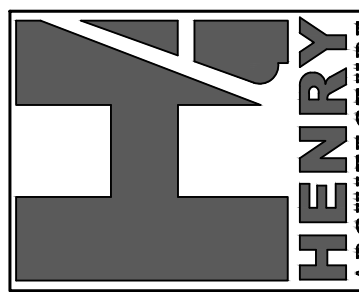
**A**  
 ALUMINUM STOREFRONT FRAME SYSTEM WITH 1" INSULATED GLAZING (TEMPERED WHERE SHOWN) AND THERMAL BREAK.

**ALUMINUM FRAME ELEV.**

SCALE: 1/4" = 1'-0"

NOTE: "T" = TEMPERED GLAZING

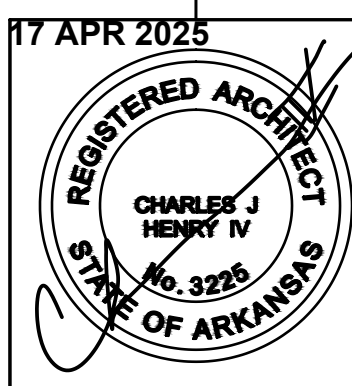
PERMIT SET 17 APR 2025



HENRY ARCHITECTURE

1722 N COLLEGE AVE., SUITE C - BOX 153  
FAYETTEVILLE, AR 72703  
PHONE - 479.530.9693 EMAIL: chenny@henryarchitecture.com

DRAWN BY: CJH4  
CHECKED BY: CJH4



JOB # 25-007

JOHNSON, AR

PERMIT SET 17 APR 2025

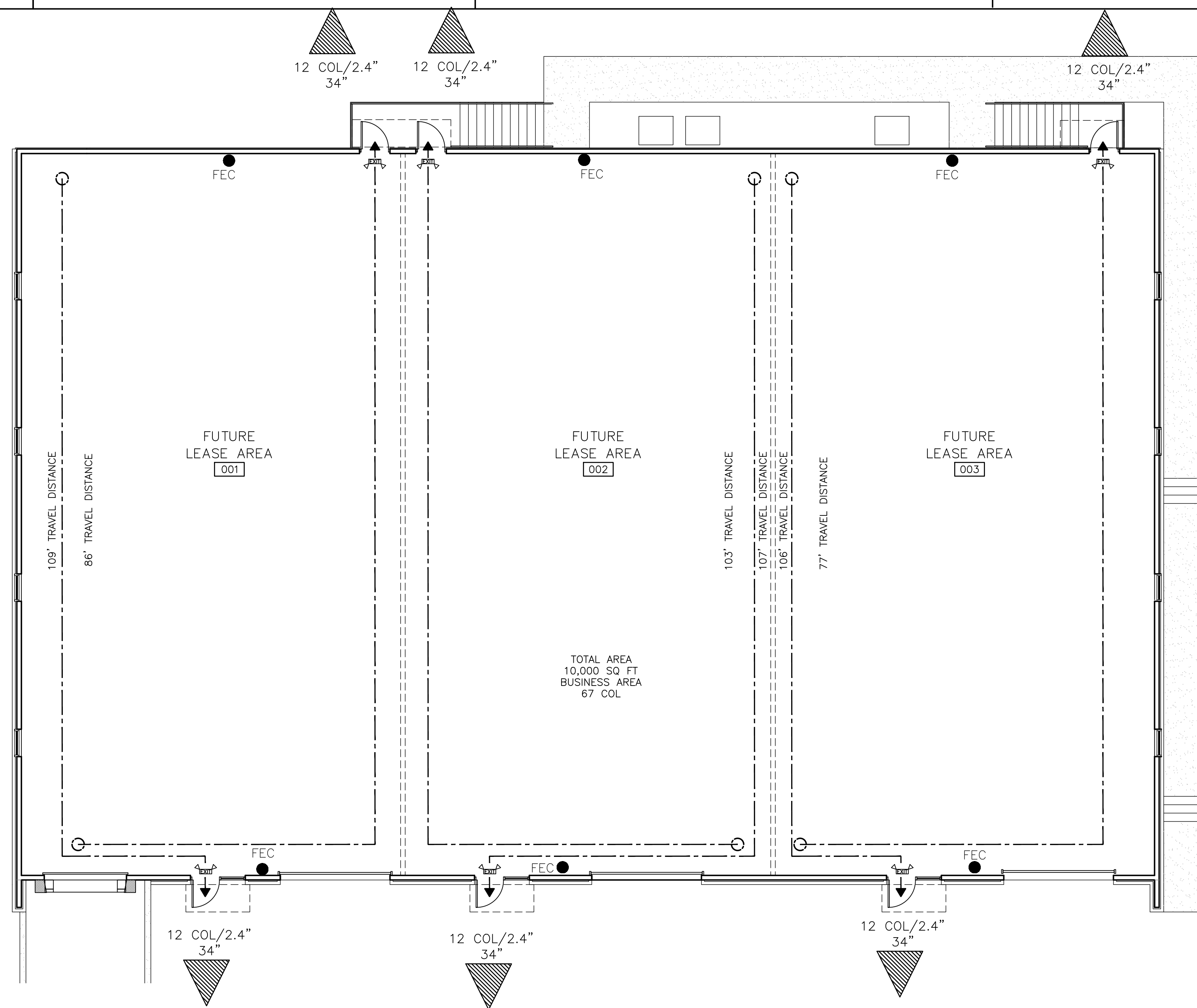
HAWKS LANDING III

LIFE SAFETY PLAN

DATE: 17 APR 2025

LS1.0

CODE LEDGEND	PROJECT INFORMATION	CONSTRUCTION DATA	FIRE PROTECTION ITEMS
<p># OCL/EXIST WIDTH REQ EXIST WIDTH PROVIDED</p> <p>LOCKER/RR 104</p> <p>774 SQ FT EXERCISE ROOMS 16 COL</p> <p>FEC</p> <p>xxx' TRAVEL DISTANCE</p> <p>EXIT</p> <p>DESIGNATED EXIT WITH EGRESS INFORMATION</p> <p>ROOM NAME ROOM NUMBER</p> <p>SQUARE FOOTAGE OF ROOM OCCUPANCY CLASSIFICATION CALCULATED OCCUPANCY LOAD</p> <p>FIRE EXTINGUISHER CABINET LOCATION</p> <p>TRAVEL ROUTE &amp; DISTANCE</p> <p>LIGHTED "EXIT" SIGN W/ EMERGENCY LIGHTING - REF M.E.P.</p>	<p><b>BUILDING SERVICES:</b> CLAY WILSON CITY OF JOHNSON AR PH. 479.521.7291</p> <p><b>OWNER:</b> CLAY W. MORTON PH. 479.957.6566</p> <p><b>ARCHITECT:</b> HENRY ARCHITECTURE 1722 N COLLEGE AVENUE SUITE C - BOX 153 FAYETTEVILLE, AR 72703 chenny@henryarchitecture.com PH. 479.530.9693</p>	<p><b>ADDRESS:</b> JOHNSON, AR 72758</p> <p><b>BUILDING AREA:</b> 10,000 SQ. FT.</p> <p><b>OCCUPANCY CLASSIFICATION:</b> B (BUSINESS)</p> <p><b>OCCUPANCY LOAD:</b> BUSINESS AREA (ONE PERSON PER 150 SQUARE FEET GROSS) 10,000 SQ. FT./150 = 67 PERSONS</p> <p><b>CONSTRUCTION TYPE:</b> TYPE OF CONSTRUCTION: TYPE VB, NON-SPRINKLERED</p> <p><b>ALLOWABLE AREA AND HEIGHT:</b> ALLOWABLE HEIGHT AND BUILDING AREA: GROUP "VB"- 2 STORIES AND 9,000 SQ. FT. PER FLOOR TOTAL PROVIDED = 10,000 SF, ONE-STORY</p> <p><b>APPLICABLE CODES:</b></p> <ul style="list-style-type: none"> <li>• 2012 ARKANSAS FIRE PREVENTION CODE VOL. 1 (2012 IFC W/ ARKANSAS AMENDMENTS)</li> <li>• 2012 ARKANSAS FIRE PREVENTION CODE VOL. II - COMMERCIAL (2012 IBC W/ ARKANSAS AMENDMENTS)</li> <li>• 2012 ARKANSAS FIRE PREVENTION CODE VOL. III - RESIDENTIAL (2012 IRC W/ ARKANSAS AMENDMENTS)</li> <li>• 2006 ARKANSAS PLUMBING CODE (APC)</li> <li>• 2010 ARKANSAS MECHANICAL CODE (AMC)</li> <li>• 2014 NATIONAL ELECTRICAL CODE (NEC)</li> <li>• 2006 ARKANSAS FUEL GAS CODES (AFGC)</li> <li>• 2014 ARKANSAS ENERGY CODE (AEC) 2009 ANSI A117.1</li> <li>• 2012 EXISTING BUILDING CODE</li> <li>• LIFE SAFETY CODES (LSC) - AS REFERENCED BY IBC</li> <li>• MOST CURRENT NFPA STANDARDS (IF APPLICABLE)</li> </ul>	<p><b>FIRE SPRINKLERS:</b> NO SPRINKLER SYSTEM REQUIRED</p> <p><b>FIRE ALARM:</b> NO FIRE ALARM SYSTEM REQUIRED</p> <p><b>EXIT SIGNS:</b> AT ALL EXITS &amp; IN EXIT PATH AS REQUIRED</p> <p><b>EMERGENCY LIGHTING:</b> THROUGHOUT AT EXIST PATHS</p> <p><b>OCCUPANCY SEPARATION:</b> NO SEPARATION REQUIRED. NONSEPARATED OCCUPANCIES. "B" USED AS MOST RESTRICTIVE OCCUPANCY CLASSIFICATION</p> <p><b>AREA SEPARATION WALLS:</b> NO AREA SEPARATION WALLS.</p> <p><b>OCCUPANCY LOADS:</b> AS SHOWN ON COMPLIANCE PLANS FOR EACH SPACE.</p>
<p><b>LIFE SAFETY NOTES</b></p> <p>1. PROVIDE KNOX BOX (MODEL 3200) - COORDINATE W/ FIRE DEPARTMENT</p>			<p><b>STRUCTURAL DATA</b></p> <p>SNOW LOAD - 15 PSF WIND LOAD - 90 MPH RISK CATEGORY - II SEISMIC RATING - ZONE B RAIN ZONE - 3.6 INCHES PER HOUR</p>



1 FIRST FLOOR LIFE SAFETY PLAN  
SCALE: 1/8" = 1'-0"

