



NEWARK DISTRIBUTION CENTER

13,846 SF FOR LEASE

397-447 Ferry Street
Newark, New Jersey

Contact Information: **Russell J. Verducci, Sior**
Vice President
201 488 5800 x121
rverducci@naihanson.com

Eric Demmers
Vice President
201 488 5800 x144
edemmers@naihanson.com



Property Specs & Site Plan

397-447 Ferry Street
Newark, NJ



BUILDING SIZE
635,482 SF



LOT SIZE
13.5 AC



POWER
Heavy



CEILING
HEIGHT
24' clear



AVAILABLE
SPACE
13,846 SF



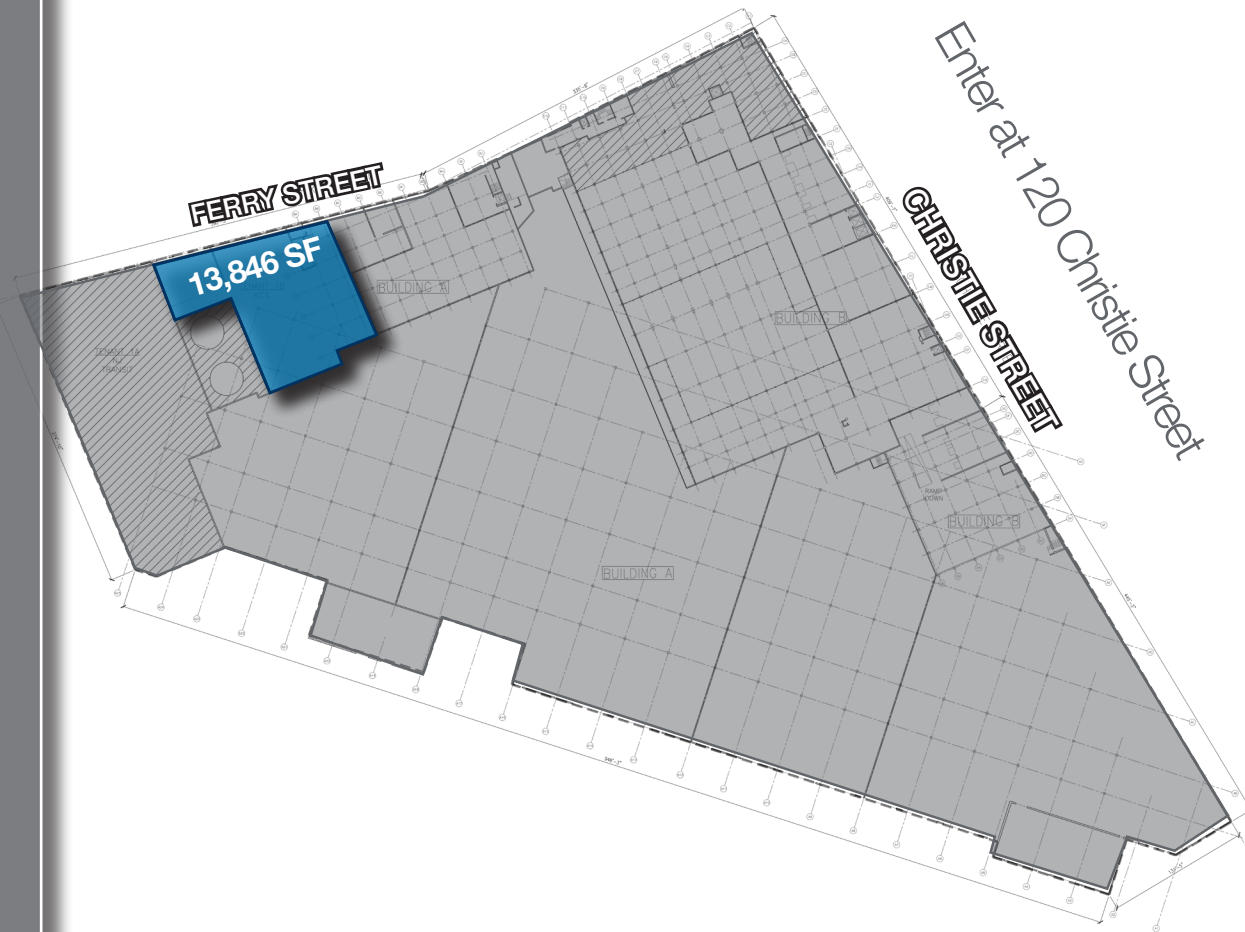
OFFICE
SPACE
800 SF



LOADING
DOCKS
3 Interior Doors

Building has recently undergone significant capital improvements to roofs, exterior paint, common areas, signage, windows, loading facilities, elevators, and parking areas.

INQUIRE FOR LEASE RATE
CAM + Taxes: \$4.60 PSF



NAI James E. Hanson Hines
COMMERCIAL REAL ESTATE SERVICES WORLDWIDE

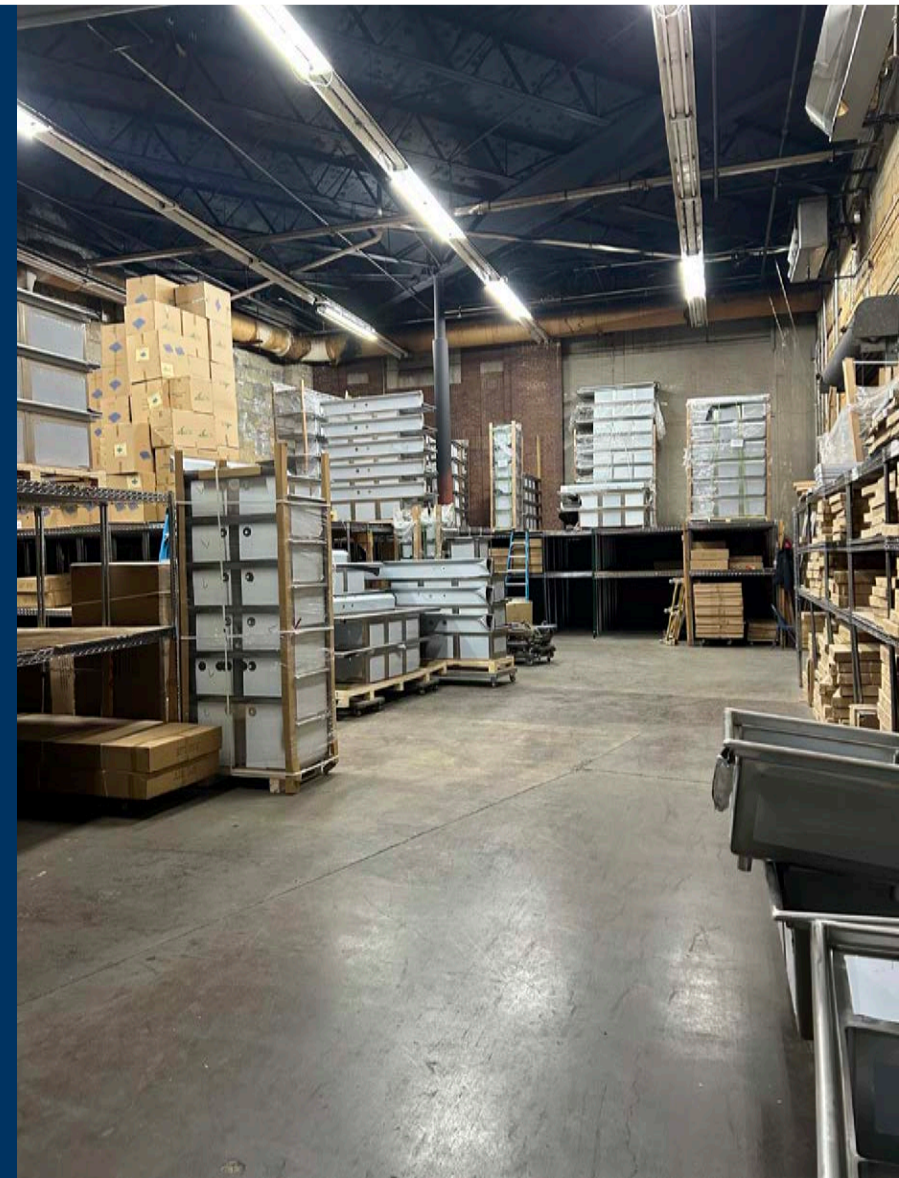
naihanson.com | 195 North Street, Suite 100 • Teterboro, NJ 07608 • 201 488 5800 | 10 Lanidex Plaza W. • Parsippany, NJ 07054 • 973 463 1011

THE INFORMATION CONTAINED HEREIN HAS BEEN OBTAINED FROM SOURCES CONSIDERED TO BE RELIABLE, BUT NO GUARANTEE OF ITS ACCURACY IS MADE BY NAI JAMES E. HANSON.



13,846 SF

397-447 Ferry Street
Newark, NJ



NAI James E. Hanson Hines
COMMERCIAL REAL ESTATE SERVICES. WORLDWIDE

THE INFORMATION CONTAINED HEREIN HAS BEEN OBTAINED FROM SOURCES CONSIDERED TO BE RELIABLE, BUT NO GUARANTEE OF ITS ACCURACY IS MADE BY NAI JAMES E. HANSON.



Highway Map & Points of Interest

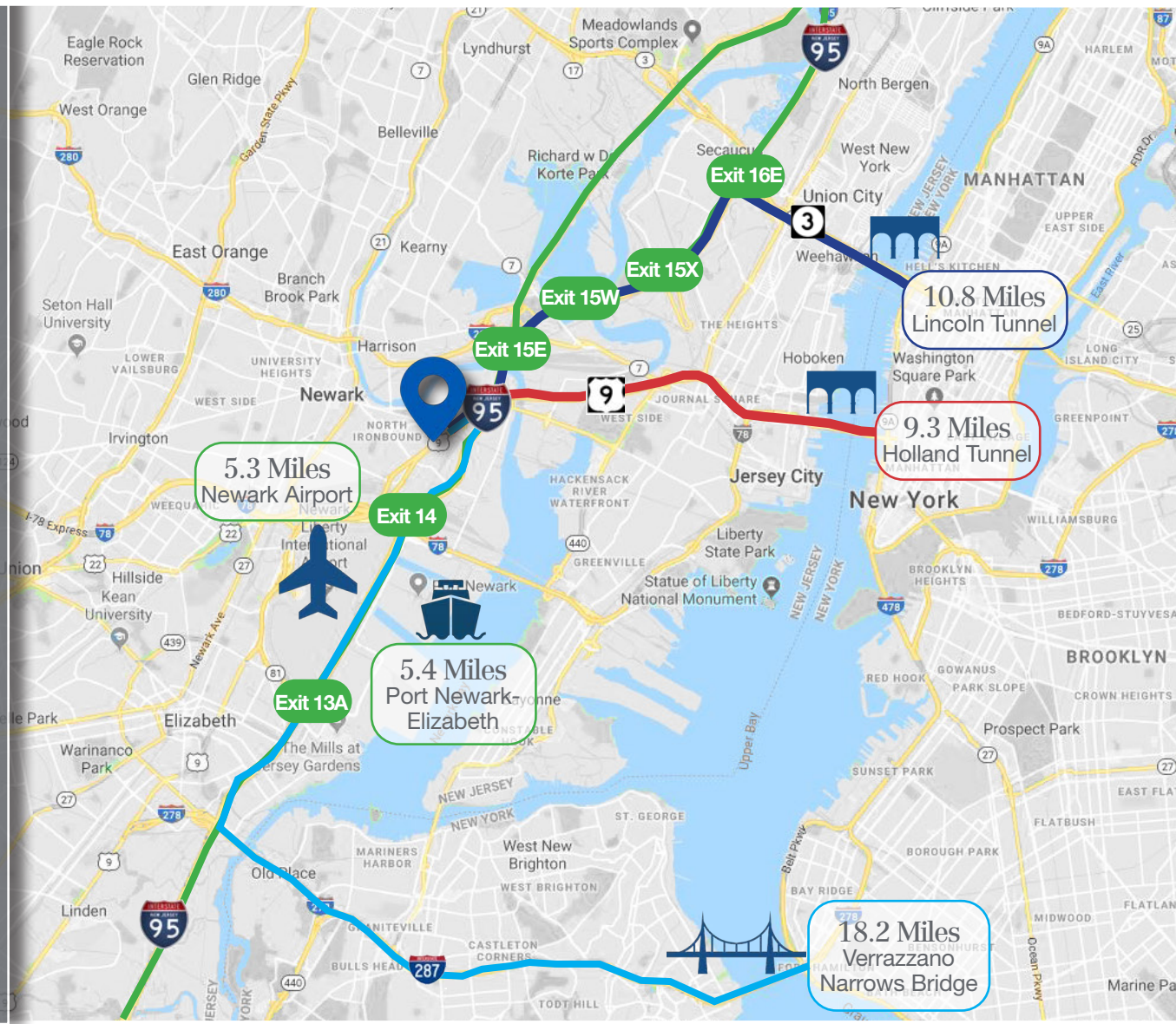
397-447 Ferry Street
Newark, NJ



Only Minutes From
Newark Liberty International Airport
and Port Newark - Elizabeth



Convenient Access To
Routes I-95 & I-9, *plus* less than 10
miles to New York City



NAI James E. Hanson Hines

COMMERCIAL REAL ESTATE SERVICES WORLDWIDE

naihanson.com | 195 North Street, Suite 100 • Teterboro, NJ 07608 • 201 488 5800 | 10 Lanidex Plaza W. • Parsippany, NJ 07054 • 973 463 1011

THE INFORMATION CONTAINED HEREIN HAS BEEN OBTAINED FROM SOURCES CONSIDERED TO BE RELIABLE, BUT NO GUARANTEE OF ITS ACCURACY IS MADE BY NAI JAMES E. HANSON.