

INDUSTRIAL CONDO FOR SALE/LEASE



TOTAL AREA: 2,500 SF

WAREHOUSE

- 14' Overhead Door
- 16' Clear Height
- Heated & Air Conditioned
- End Unit Easy Accessibility

UPGRADED OFFICE

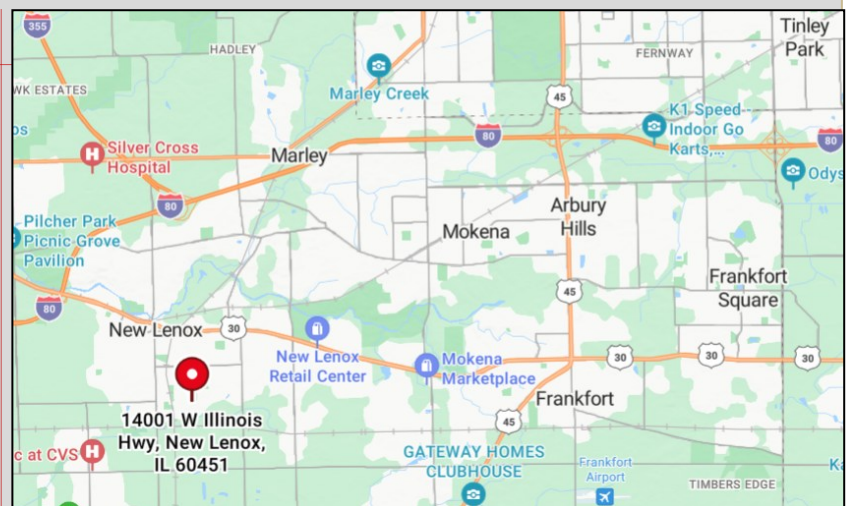
- Fully Furnished
- 3 Private Offices
- Conference Room
- 2 Kitchenettes
- 2 Bathrooms (Shower)
- 2,200 + SF 2 Level Office
- New Flooring Throughout

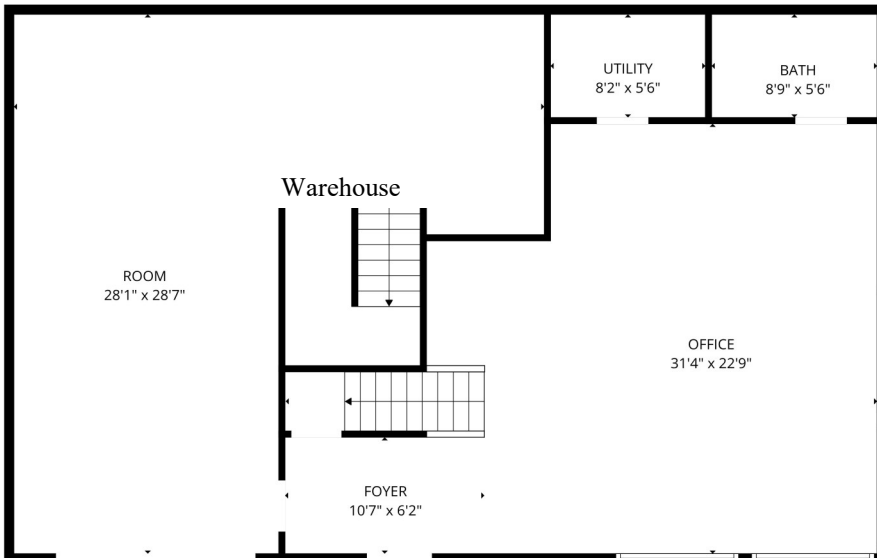
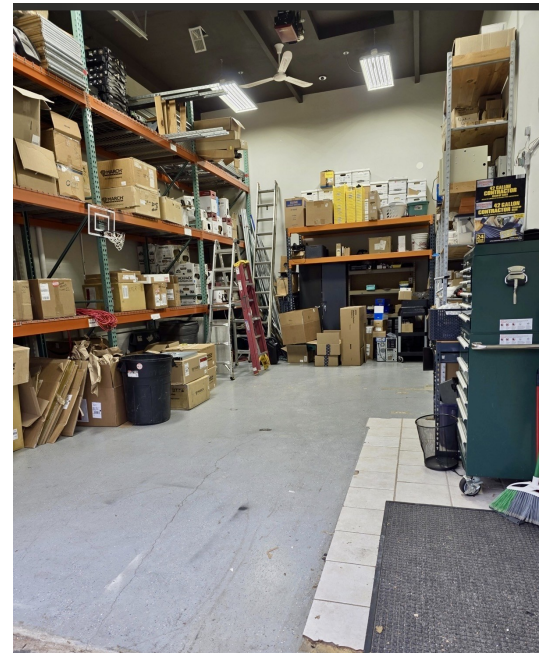
- ♦ Low Will County Taxes
- ♦ Updated LED Lighting
- ♦ Front Corner End Unit
- ♦ Centrally Located to I-80, I-57, I-355
- ♦ Monument Signage

CONTACT

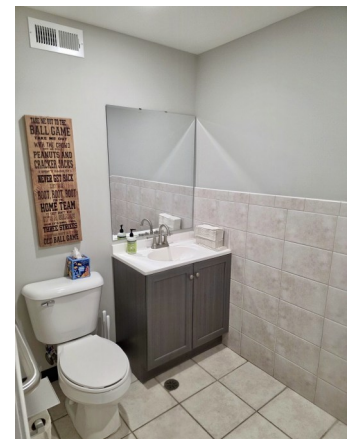
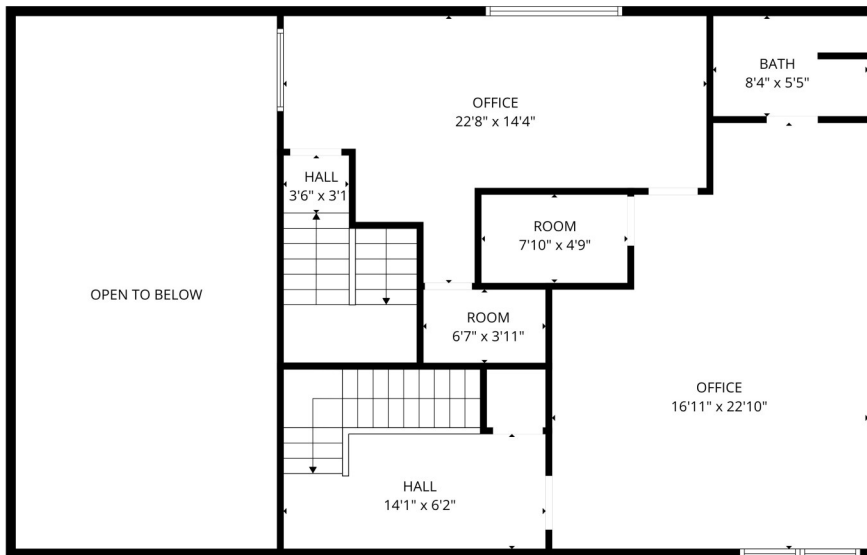
Theresa Schulz
630.737.1200 Main
630.453.1230 Mobile

Schulz Properties, Ltd.
947 Maple Avenue, Downers Grove, IL





First Level



2nd Level