



26901 Cannon Rd.
Bedford Hts, OH

Property Features

- Max Contiguous to 7,021 SF
- Potential Flex Conversion
- Ample Parking
- Monument Signage Opportunity
- Easy Access to I-271 and I-480 Interchange



LEASE RATES

LEASE RATES			
Suite 400	4,406 SF	\$10.00 SF	NNN
Suite 500	2,615 SF	\$10.00 SF	NNN

Joe Hauman
+1 440 591 3723
joe.hauman@naipvc.com

Noah Broadbent
+1 440 708 8578
noah.broadbent@naipvc.com

FOR LEASE

Suite 400 Photos



Joe Hauman
+1 440 591 3723
joe.hauman@naipvc.com

Noah Broadbent
+1 440 708 8578
noah.broadbent@naipvc.com

FOR LEASE

Suite 500 Photos

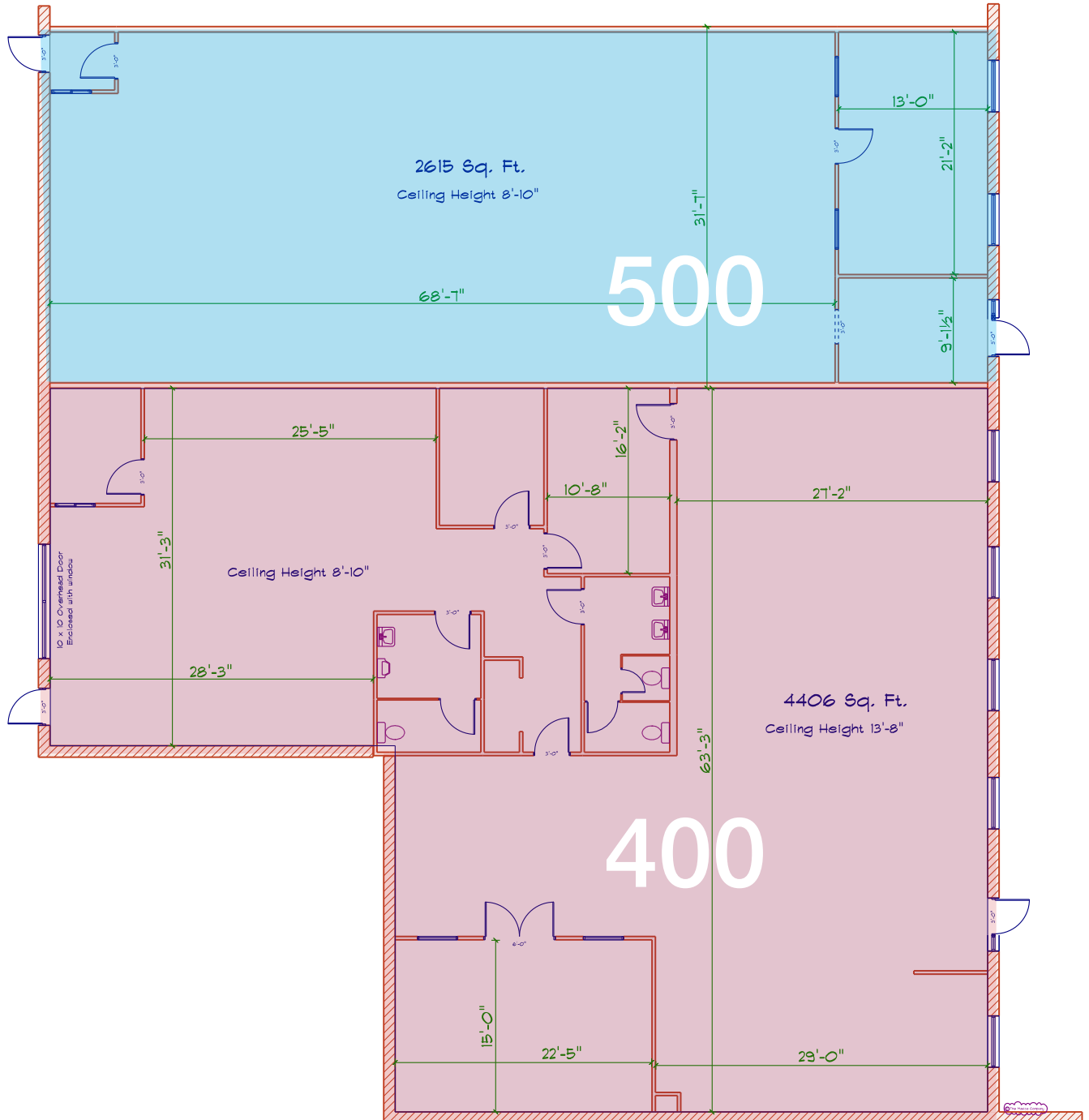


Joe Hauman
+1 440 591 3723
joe.hauman@naipvc.com

Noah Broadbent
+1 440 708 8578
noah.broadbent@naipvc.com

FOR LEASE

Floorplans

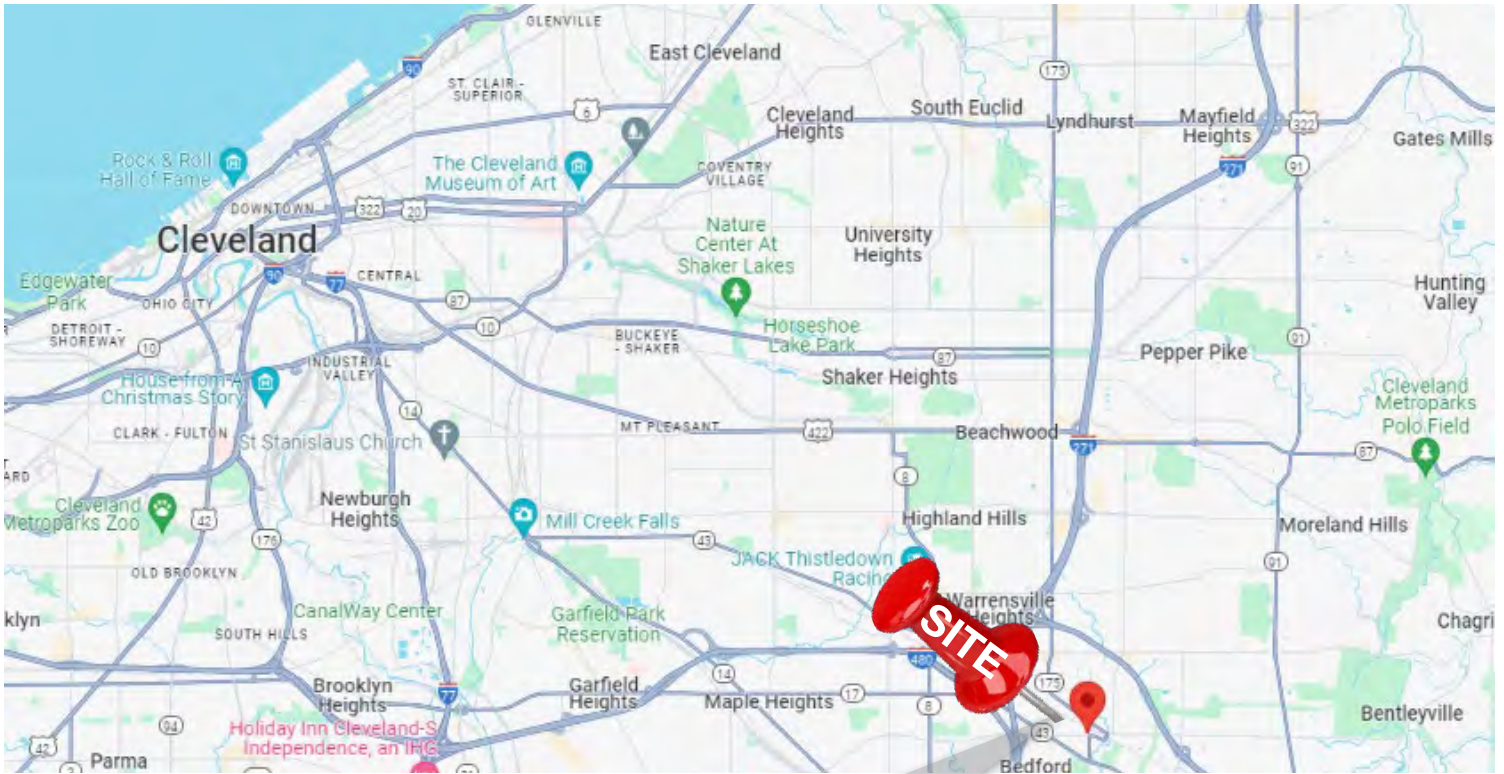


Joe Hauman
+1 440 591 3723
joe.hauman@naipvc.com

Noah Broadbent
+1 440 708 8578
noah.broadbent@naipvc.com

FOR SALE

Location



26901 Cannon Rd.
Bedford Hts., OH

Joe Hauman
+1 440 591 3723
joe.hauman@naipvc.com

Noah Broadbent
+1 440 708 8578
noah.broadbent@naipvc.com

DEMOGRAPHS

1 Mile Radius

KEY FACTS

4,436

Population



2.0

Average Household Size

44.2

Median Age

\$40,396

Median Household Income

EDUCATION

8%

No High School Diploma



23%

High School Graduate



32%

Some College



37%

Bachelor's/Grad/Pr of Degree

BUSINESS



326

Total Businesses



5,378

Total Employees

EMPLOYMENT



61.4%

White Collar



20.9%

Blue Collar



17.6%

Services

9.3%

Unemployment Rate

INCOME



\$40,396

Median Household Income



\$33,751

Per Capita Income



\$19,767

Median Net Worth

2023 Households by income (Esri)

The largest group: <\$15,000 (19.8%)

The smallest group: \$150,000 - \$199,999 (3.4%)

Indicator ▲	Value	Diff		
<\$15,000	19.8%	+6.6%		
\$15,000 - \$24,999	10.5%	+1.8%		
\$25,000 - \$34,999	12.9%	+3.8%		
\$35,000 - \$49,999	15.6%	+3.0%		
\$50,000 - \$74,999	14.0%	-3.0%		
\$75,000 - \$99,999	9.5%	-2.9%		
\$100,000 - \$149,999	8.8%	-4.9%		
\$150,000 - \$199,999	3.4%	-2.8%		
\$200,000+	5.6%	-1.5%		

Bars show deviation from Cuyahoga County

This infographic contains data provided by Esri, Esri and Data Axle. The vintage of the data is 2023, 2028.

© 2024 Esri

Joe Hauman

+1 440 591 3723

joe.hauman@naipvc.com

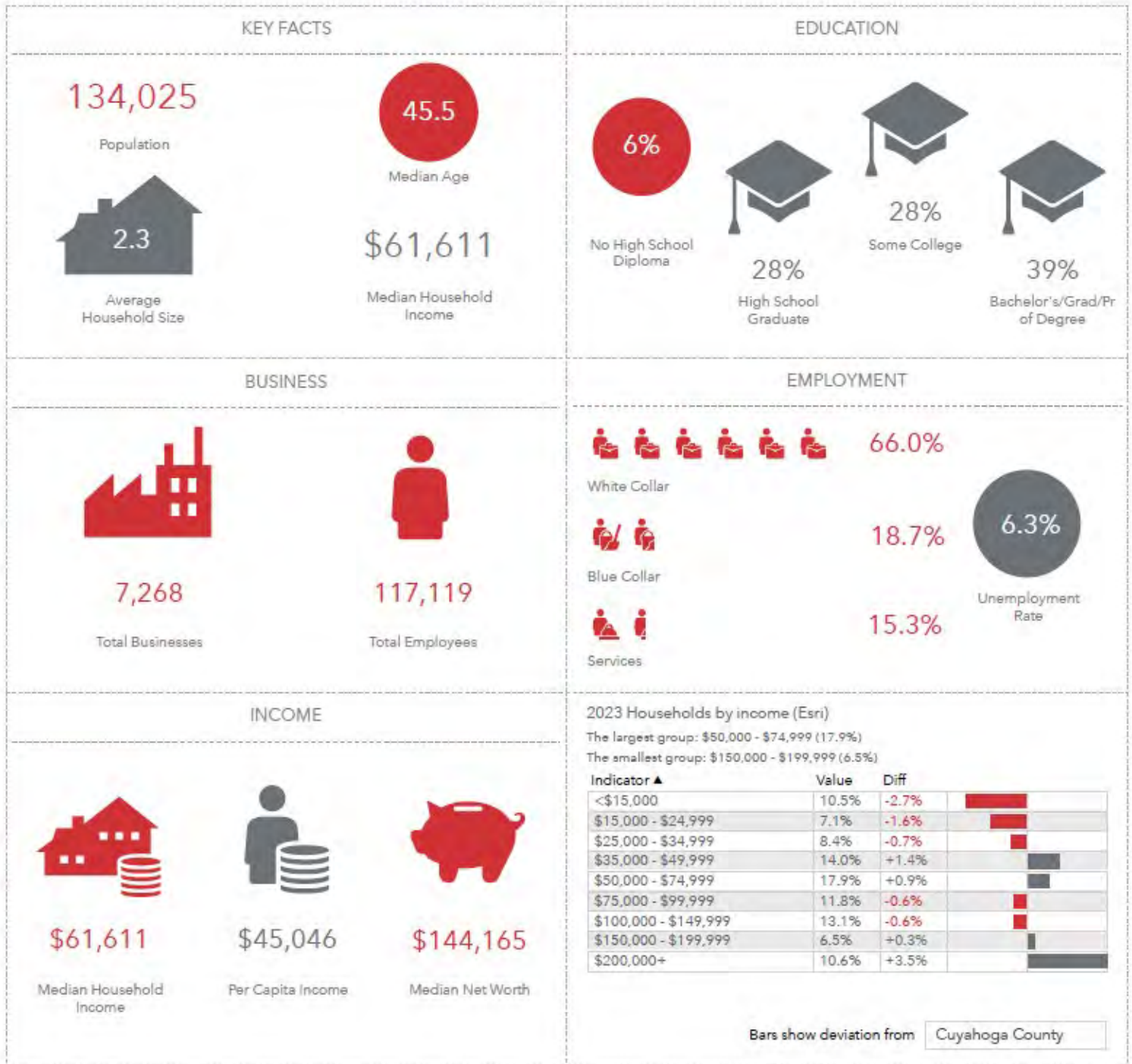
Noah Broadbent

+1 440 708 8578

noah.broadbent@naipvc.com

DEMOGRAPHS

5 Mile Radius



This infographic contains data provided by Esri, Esri and Data Axle. The vintage of the data is 2023, 2028.

© 2024 Esri

Joe Hauman
 +1 440 591 3723
 joe.hauman@naipvc.com

Noah Broadbent
 +1 440 708 8578
 noah.broadbent@naipvc.com