

AVAILABLE

Glenfield Business Center

2501-2555 Mechanicsville Turnpike, Richmond, VA 23223



Exclusive Agent:

CLIFF PORTER, CCIM, SIOR
(804) 521-1442
cliff@porterinc.com

ROBERT PORTER III
(804) 521-1455
rep3@porterinc.com

4801 Radford Avenue | P.O. Box 6482
Richmond, VA 23230
www.porterinc.com
804-353-7994

PORTER
R E A L T Y

CORFAC
INTERNATIONAL

SIOR

CCIM

HIGHLIGHTS

- Suite 2501-2509: 21,175 SF w/7,645 SF office, 4 loading docks & 1 ramp, Fully Conditioned office/warehouse, Ceiling Height 16'2" - 17', Heavy Power w/ 800a/480v/3ph & 1200a/208v/3ph
- Suite 2513: 11,429 SF w/4,000 SF office, 2 docks & 1 drive-in, 2,000 SF section w/17' clr (remaining is conditioned with drop ceiling), 208v, 3ph power
- Suite 2527: 3,460 SF w/1,200 SF office, 1 dock door, Fully HVAC with 11' 10" ceilings
- Zoned M-1
- Enterprise Zone in Henrico County
- Immediate Access to I-64
- Lease: \$10.50/SF NNN

This information has been prepared by Porter Realty Company, Inc. for marketing purposes only. No representation or warranty, expressed or implied, is made as to the accuracy of the foregoing information. Terms of sale or lease and availability are subject to change or withdrawal without notice.

PROPERTY PHOTOS- SUITE 2513

2501-2555 Mechanicsville Turnpike | Richmond, VA 23223



PROPERTY PHOTOS- SUITE 2527

2501-2555 Mechanicsville Turnpike | Richmond, VA 23223



Cliff Porter, CCIM, SIOR
(804) 521-1442
cliff@porterinc.com

Robert Porter III
(804) 521-1455
rep3@porterinc.com

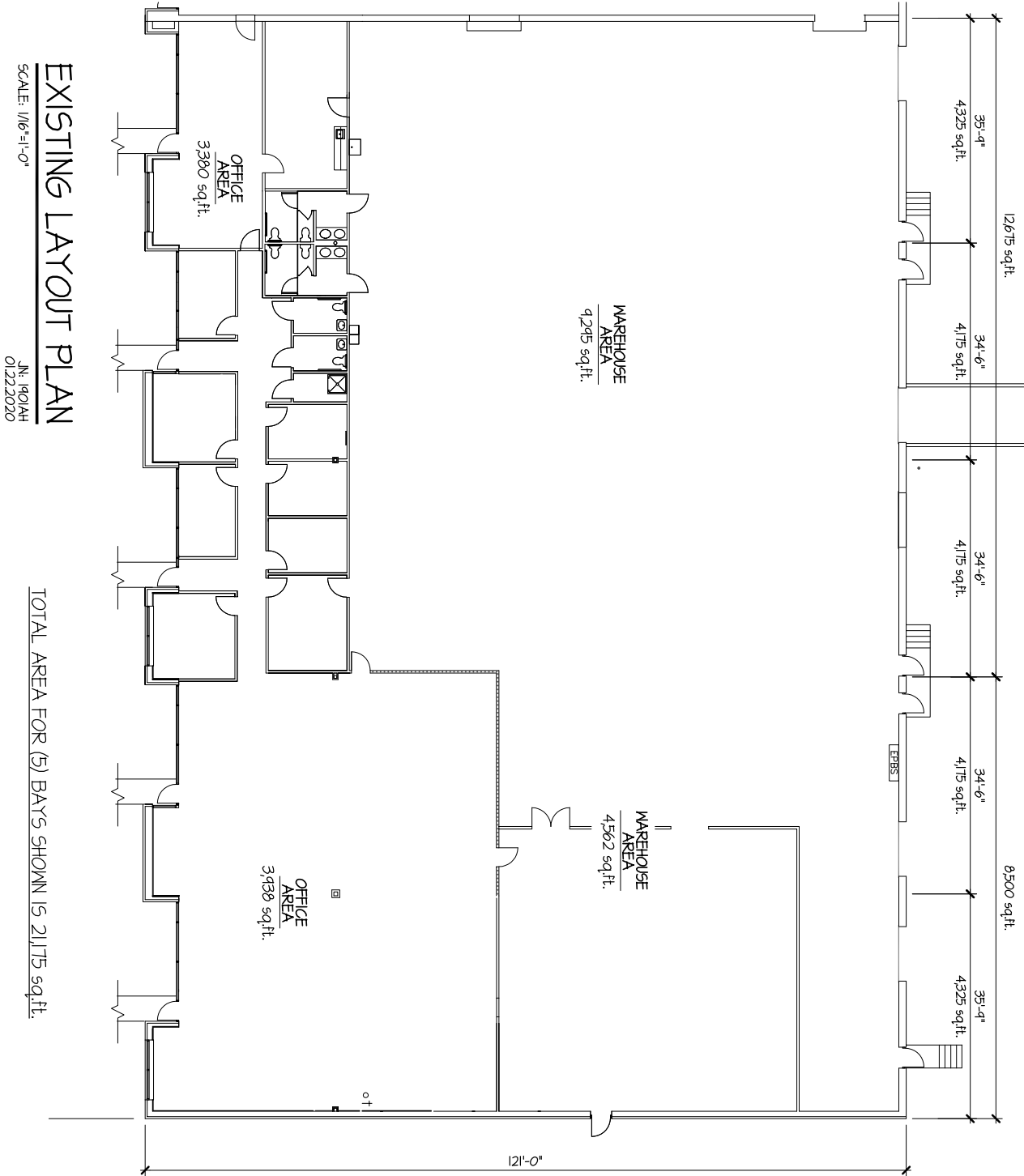


Porter Realty Company, Inc. | 4801 Radford Avenue | P.O. Box 6482 | Richmond, VA 23230 | www.porterinc.com

This information has been prepared by Porter Realty Company, Inc. for marketing purposes only. No representation or warranty, expressed or implied, is made as to the accuracy of the foregoing information. Terms of sale or lease and availability are subject to change or withdrawal without notice.

SUITES 2501-2509

2501-2555 Mechanicsville Turnpike | Richmond, VA 23223



Cliff Porter, CCIM, SIOR
(804) 521-1442
cliff@porterinc.com

Robert Porter III
(804) 521-1455
rep3@porterinc.com

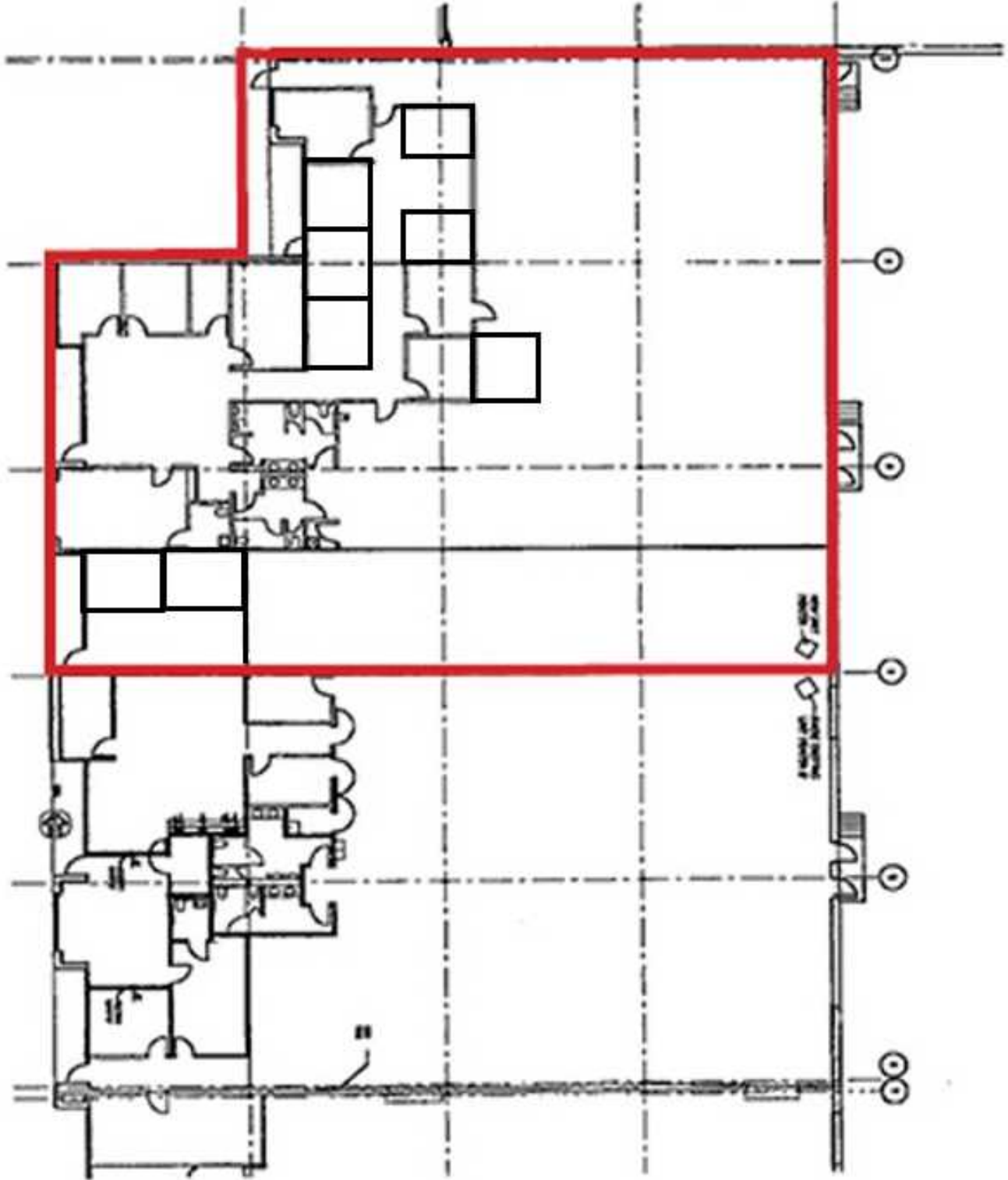


Porter Realty Company, Inc. | 4801 Radford Avenue | P.O. Box 6482 | Richmond, VA 23230 | www.porterinc.com

This information has been prepared by Porter Realty Company, Inc. for marketing purposes only. No representation or warranty, expressed or implied, is made as to the accuracy of the foregoing information. Terms of sale or lease and availability are subject to change or withdrawal without notice.

SUITE 2513

2501-2555 Mechanicsville Turnpike | Richmond, VA 23223



Cliff Porter, CCIM, SIOR
(804) 521-1442
cliff@porterinc.com

Robert Porter III
(804) 521-1455
rep3@porterinc.com

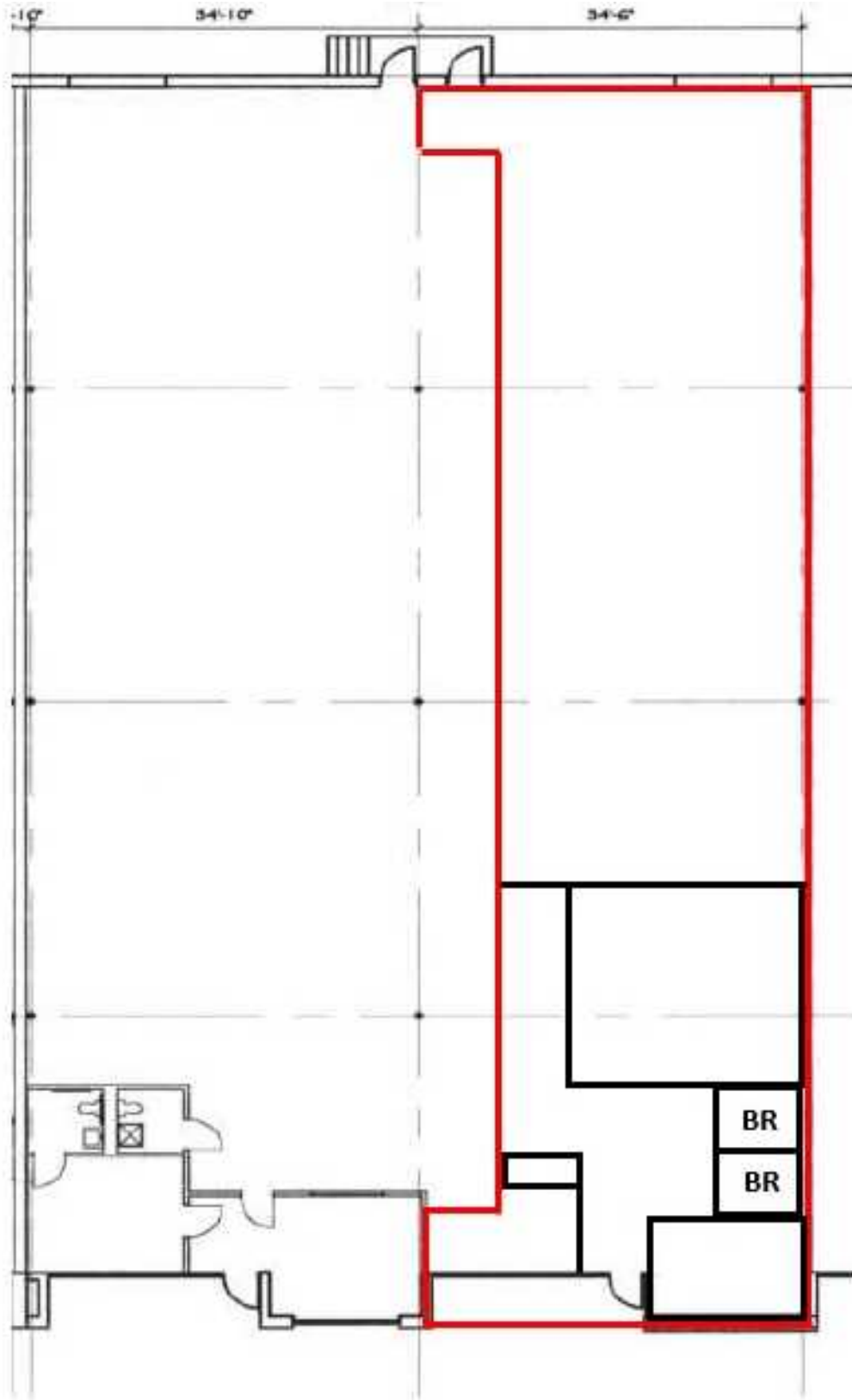


Porter Realty Company, Inc. | 4801 Radford Avenue | P.O. Box 6482 | Richmond, VA 23230 | www.porterinc.com

This information has been prepared by Porter Realty Company, Inc. for marketing purposes only. No representation or warranty, expressed or implied, is made as to the accuracy of the foregoing information. Terms of sale or lease and availability are subject to change or withdrawal without notice.

SUITE 2527

2501-2555 Mechanicsville Turnpike | Richmond, VA 23223



Cliff Porter, CCIM, SIOR
(804) 521-1442
cliff@porterinc.com

Robert Porter III
(804) 521-1455
rep3@porterinc.com



Porter Realty Company, Inc. | 4801 Radford Avenue | P.O. Box 6482 | Richmond, VA 23230 | www.porterinc.com

This information has been prepared by Porter Realty Company, Inc. for marketing purposes only. No representation or warranty, expressed or implied, is made as to the accuracy of the foregoing information. Terms of sale or lease and availability are subject to change or withdrawal without notice.

LOCATION MAPS

2501-2555 Mechanicsville Turnpike | Richmond, VA 23223

