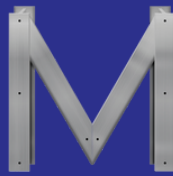


MERCER
COMMERCIAL

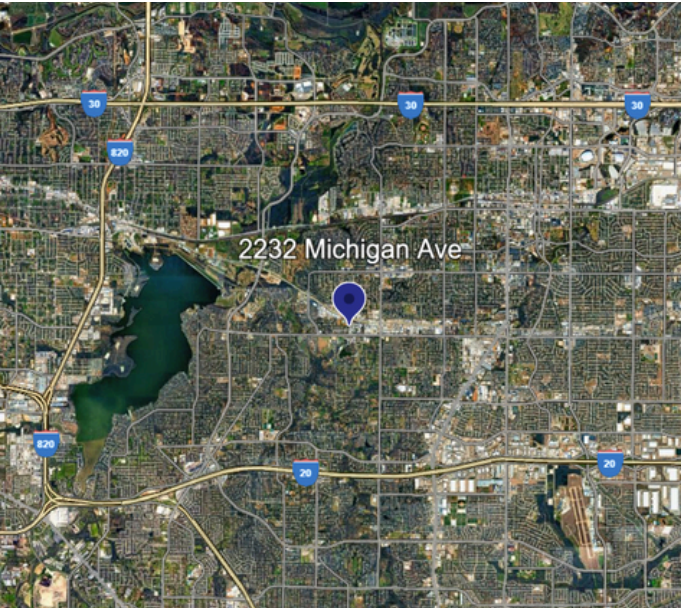


COMPANY
REAL ESTATE

FOR LEASE

AVAILABLE: 2,112 SF

2232 MICHIGAN AVE, SUITE B, ARLINGTON, TX 76013



NICK FULTON

Market Director

(469) 616-8783

nfulton@mercerc-company.com

PROPERTY FEATURES

- Available SF: 2,112
- Office SF: 679
- 16 Clear Height
- 1 Grade Level Door
- Reception Area
- 3 Private Offices
- 1 Restroom

CORBY HODGKISS, SIOR

Executive Vice President

(469) 360-3918

chodgkiss@mercerc-company.com

Mercer Company
2461 N Stemmons Fwy, Dallas, TX 75207

mercerc-company.com

AVAILABLE: 2,112 SF

2232 MICHIGAN AVE, SUITE B, ARLINGTON, TX 76013



NICK FULTON

Market Director
(469) 616-8783



CORBY HODGKISS, SIOR

Executive Vice President
(469) 360-3918

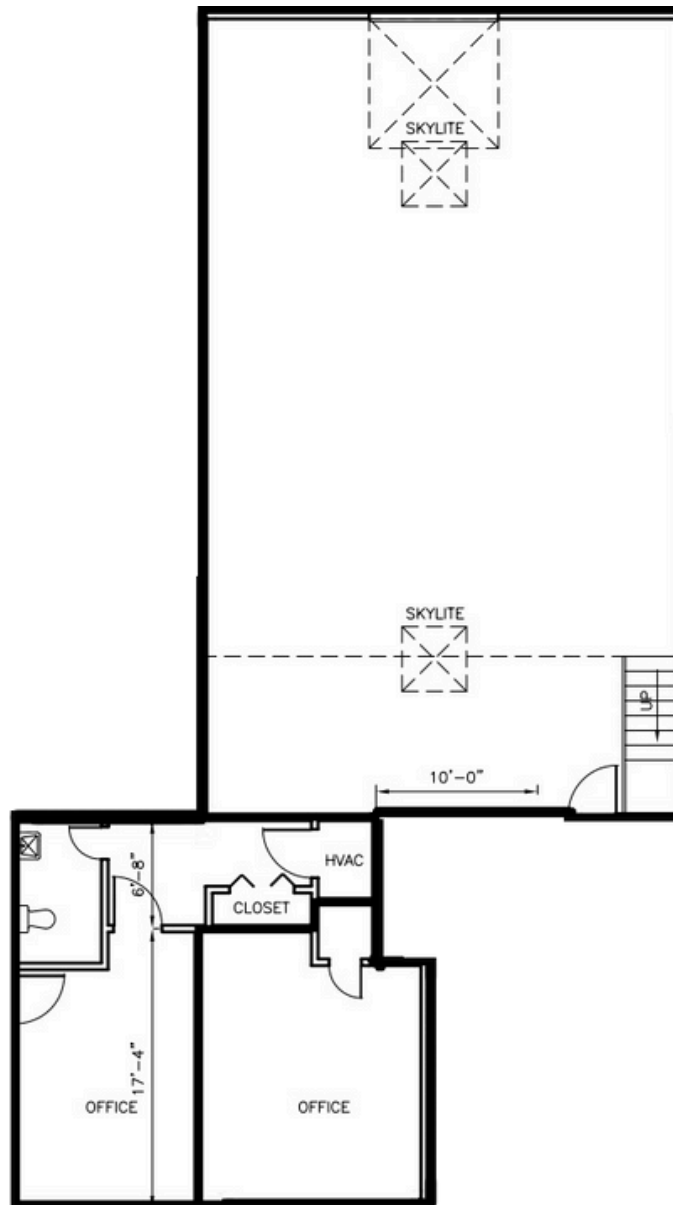
The information contained herein has been given to us by the owner of the property or other sources we deem reliable. We have no reason to doubt its accuracy, but we do not guarantee it. All information should be verified before purchase or lease.

Mercer Company
2461 N Stemmons Fwy, Dallas, TX 75207

mercercorporate.com

AVAILABLE: 2,112 SF

2232 MICHIGAN AVE, SUITE B, ARLINGTON, TX 76013



NICK FULTON

Market Director
(469) 616-8783



CORBY HODGKISS, SIOR

Executive Vice President
(469) 360-3918

The information contained herein has been given to us by the owner of the property or other sources we deem reliable. We have no reason to doubt its accuracy, but we do not guarantee it. All information should be verified before purchase or lease.