

REMAX COMMERCIAL

FOR LEASE

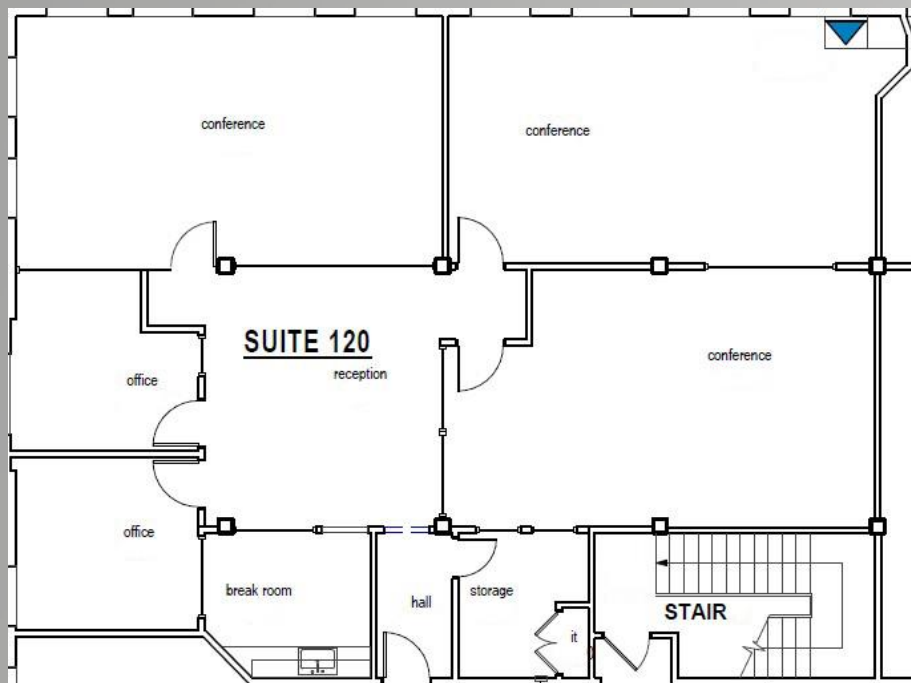
69 MILK STREET, WESTBOROUGH

*Westborough Premiere
Historic Professional
Office Building!*

OFFICE SPACE



**INTRODUCTORY
RATE \$17.50 psf**



**Suite 120 - 2,974 rsf (avail
June)**

*This 1st floor suite has 3 large
conference rooms, 2 private
offices, a kitchen/breakroom &
a reception area.*

*Conveniently located on route
135 between Westborough's
rotary and route 9. Easy
access to all highways. Shared
conference room, café and
outdoor seating areas as well
as historic mill décor.*

RICK KAPLAN

o: 508.541.1350

m: 508.561.0445

rickkaplan@remaxexec.com

CASEY KILLAM

o: 508.541.1350

m: 774.287.2084

caseykillam@remaxexec.com

*The Commercial Division of REMAX Executive Realty
308 West Central Street, Suite E - Franklin, MA
T: 508.541.1350 - F: 508.966.7558
www.remaxcommercialma.com*

REMAX
COMMERCIAL®