

Dakota Medical Suites

3100 W San Carlos St, Tampa, FL 33629



John McKinnon

Ramos Companies

5706 S MacDill Ave, Tampa, FL 33611

jmckinnon@ramoscompanies.com

(941) 320-3673



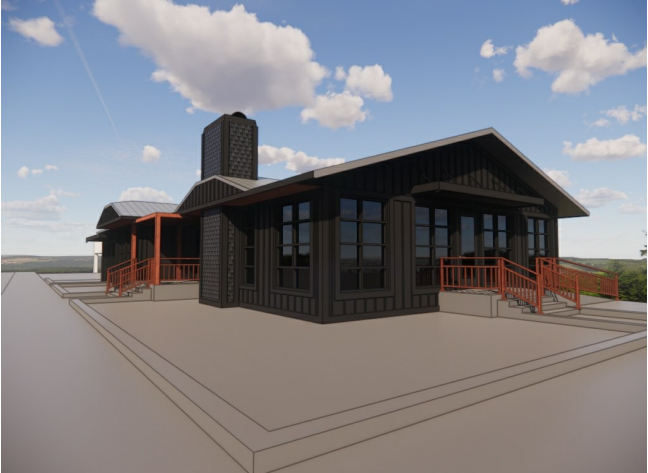
Dakota Medical Suites

Pricing Upon Request

Nestled in the bustling heart of South Tampa just South of Palma Ceia, this premier medical and personal services space offers an exceptional opportunity for healthcare professionals seeking a modern, customizable workspace. Our facility provides a professional environment where innovation, patient care, and efficiency converge. Currently undergoing a bespoke renovation, the property blends contemporary design with functionality, ensuring a welcoming and professional setting for both practitioners and patients.

This location has a strong history of success, previously home to a thriving business for over 12 years, demonstrating a solid foundation for your practice. With Dakota Workspaces collaborating with architects...

- Situated in the heart of South Tampa on MacDill, across from a thriving city development.
- Undergoing bespoke renovation with a farmhouse chic aesthetic that creates a welcoming atmosphere.
- Opportunity to tailor the layout with Dakota Workspaces' architects to fit your vision.



Rental Rate:	Upon Request
Min. Divisible:	150 SF
Property Type:	Retail
Property Subtype:	Freestanding
Gross Leasable Area:	6,114 SF
Year Built:	1925
Construction Status:	Under Renovation
Walk Score ®:	84 (Very Walkable)
Transit Score ®:	30 (Some Transit)
Rental Rate Mo:	Upon Request

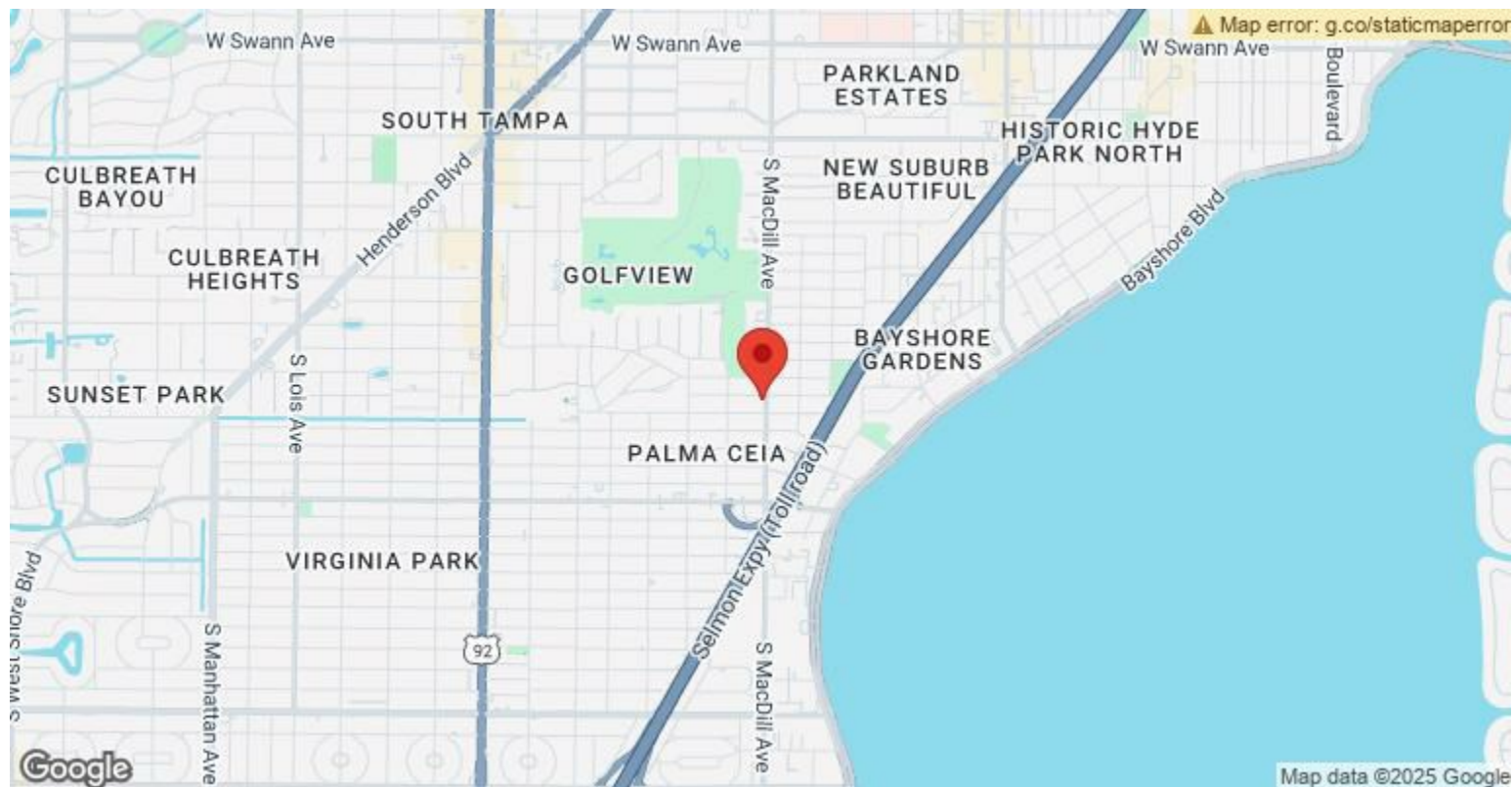
1st Floor

Space Available	150 - 3,168 SF
Rental Rate	Upon Request
Date Available	To Be Determined
Service Type	Full Service
Space Type	Sublet
Space Use	Office/Medical(Coworking)

offers 3,168 square feet of versatile space in the heart of South Tampa, making it the ideal location for spa or salon professionals. The facility is currently undergoing a bespoke renovation, featuring a charming farmhouse chic design that blends warmth and elegance, creating an inviting atmosphere for both clients and professionals. The space is fully customizable, allowing you to collaborate with Dakota Workspaces' architects to tailor the layout to your specific vision and business needs. Previously home to a successful spa business for over 12 years, this location has a proven track record of success, providing a solid foundation for new ventures. Whether you're seeking a private suite to grow your brand or a larger space to expand your operations, this property offers flexibility with month-to-month leasing options and fully equipped suites that come with essentials like shampoo/wash sinks and on-site laundry.

Major Tenant Information

Tenant	SF Occupied	Lease Expired
Plate & Dish Kitchen Design Studio	-	
SunBurn Wine Storage	-	



3100 W San Carlos St, Tampa, FL 33629

Nestled in the bustling heart of South Tampa just South of Palma Ceia, this premier medical and personal services space offers an exceptional opportunity for healthcare professionals seeking a modern, customizable workspace. Our facility provides a professional environment where innovation, patient care, and efficiency converge. Currently undergoing a bespoke renovation, the property blends contemporary design with functionality, ensuring a welcoming and professional setting for both practitioners and patients.

This location has a strong history of success, previously home to a thriving business for over 12 years, demonstrating a solid foundation for your practice. With Dakota Workspaces collaborating with architects to finalize layout details, this is the perfect time to secure a space that aligns with your unique vision. Whether you're an independent practitioner, a growing medical office, or looking to expand, we offer flexible leasing options designed to accommodate your specific needs.

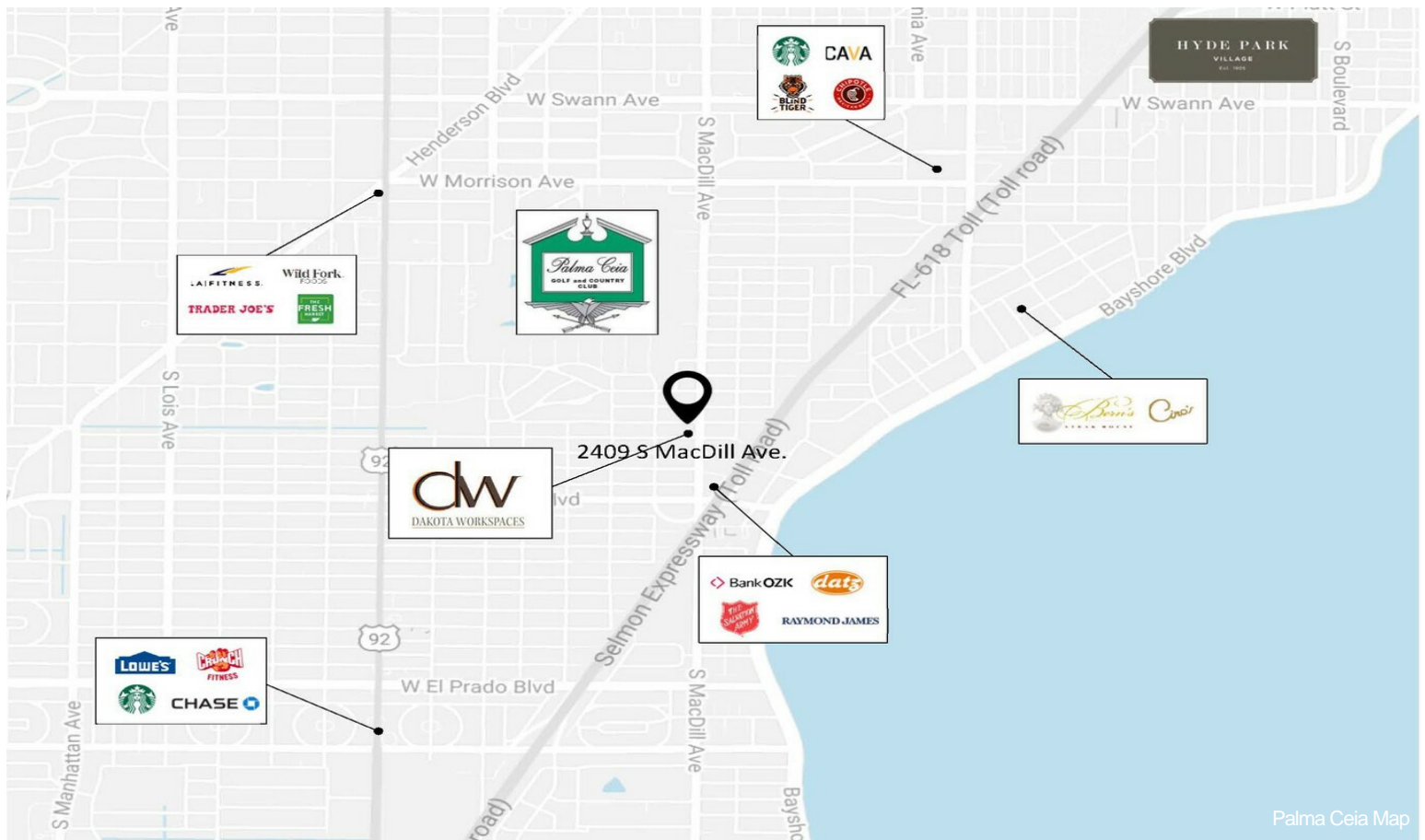
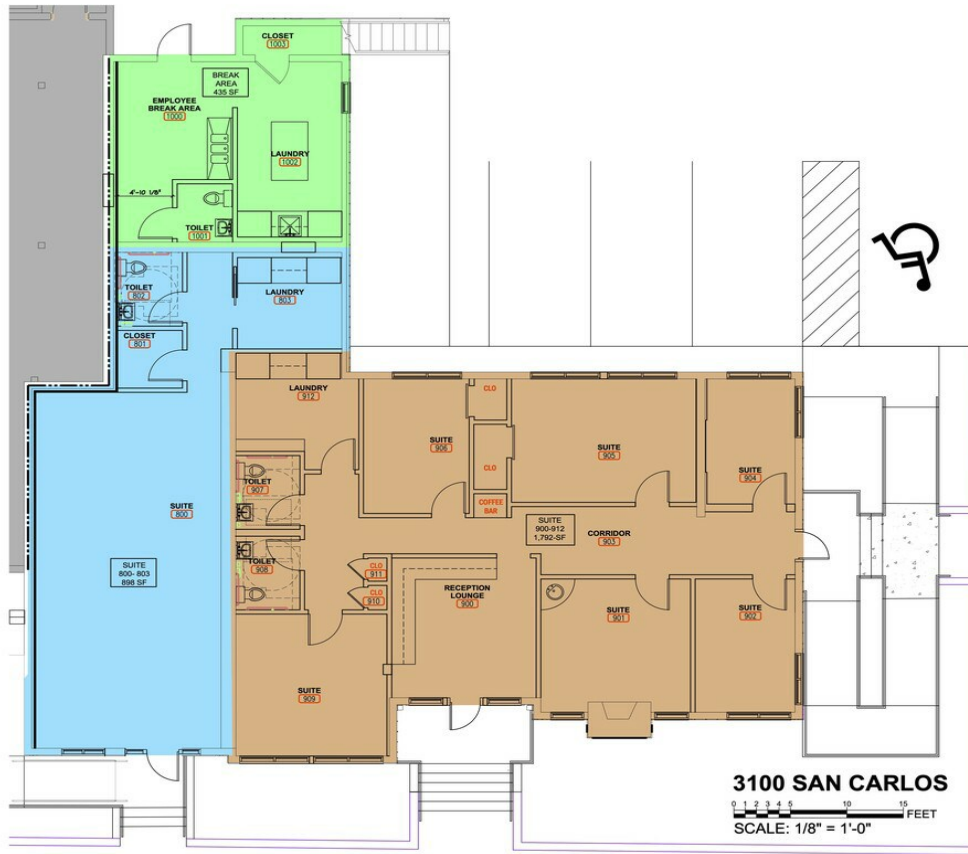
****For Individual Medical & Personal Service Providers****

- * Customizable Suites: Our spaces are designed for medical professionals, including general practitioners, dentists, chiropractors, physical therapists, and personal care providers. Whether you require private treatment rooms or an open layout, we provide flexibility to tailor your space to your needs.
- * Move-In Ready: Our white box delivery includes all essential infrastructure—HVAC, finished floors, walls, plumbing, and electrical—allowing you to focus on furnishing and equipping your practice as needed.
- * Flexible Leasing Options: Enjoy lease terms designed to support your practice's growth with competitive rates and adaptable terms.

****For Expanding Medical Practices or Group Clinics****

- * Expansive Space: With Suite 900 at 1,792 sq. ft., featuring 7 private suites, and Suite 800 at 898 sq. ft., a fully open space ready for build-out, you have the opportunity to create a state-of-the-art practice tailored to your vision.
- * Combine for Maximum Potential: For larger practices, Suite 800 and Suite 900 can be combined for a total of 2,690 sq. ft., allowing for a comprehensive medical, dental, or wellness facility with exam rooms, consultation areas, and administrative offices.
- * Strategic Location: Situated in South Tampa's sought-after medical corridor, this location provides easy accessibility, ensuring high patient visibility and convenience.

Property Photos



Property Photos



Property Photos



Property Photos



Property Photos



Property Photos



Property Photos



Property Photos



existing_DPP9821