



FOR LEASE

8,369 SF INDUSTRIAL SPACE

**3555 Meeting Street Rd
North Charleston, SC 29405**



Contact us:

**Todd Garrett, CCIM, SIOR
Partner
+1.843.408.8846**

**Tradd Varner, SIOR
Partner
+1.843.532.1684**

**Crawford Riddle
Associate
+1.864.423.4973**



PROPERTY INFORMATION

TAX MAP	469-06-00-088
BUILDING SIZE	16,080 SF
PARKING	15 spaces
ACREAGE	1.19 AC
AVAILABLE SPACE	8,369 SF
RENTAL RATE	\$14 PSF NNN
DATE AVAILABLE	March 1st, 2023
ZONING	Light Industrial

PROPERTY SUMMARY

Well located flex warehouse space under redevelopment in central North Charleston. 3555 Meeting Street, Unit A is located in close proximity to the Former Charleston Navy Base and provides tenants excellent visibility along Meeting Street Rd. with quick access to I-26. Ideal opportunity for occupants needing convenient office/warehouse space or customer showroom and storage.

LANDLORD'S RENOVATION PLAN

- New Roof
- Attractive exterior paint
- New Store Fronts
- New parking lot, landscaping and entrances
- Interior demo and new warehouse lighting
- Tenant Improvement Allowance offered for interior improvement.



Todd Garrett, CCIM, SIOR
 +1.843.408.8846
 todd.garrett@harborcommercialpartners.com

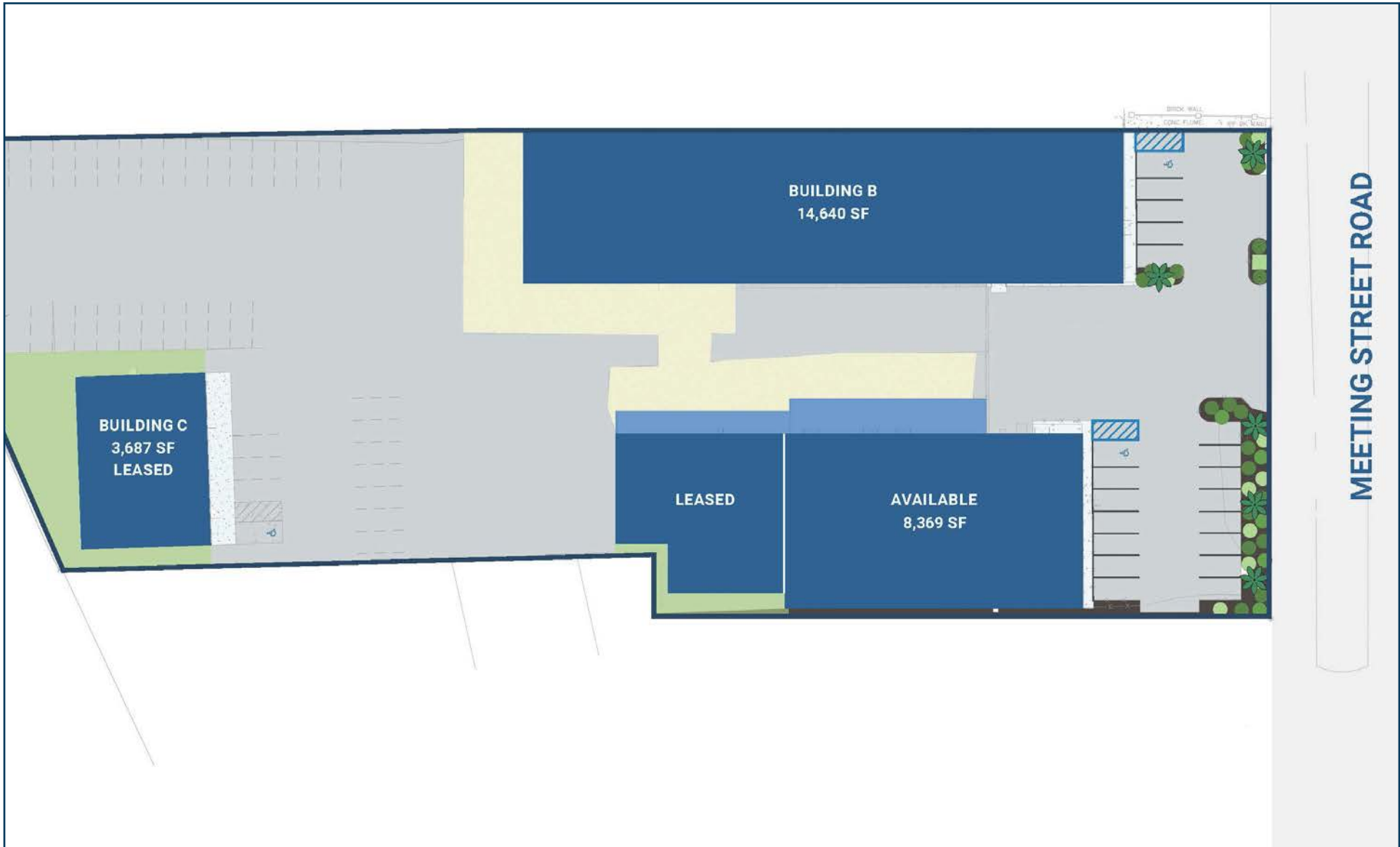
Tradd Varner, SIOR
 +1.843.532.1684
 tradd.varner@harborcommercialpartners.com

Crawford Riddle
 +1.864.423.4973
 crawford.riddle@harborcommercialpartners.com

PROPERTY LOCATION



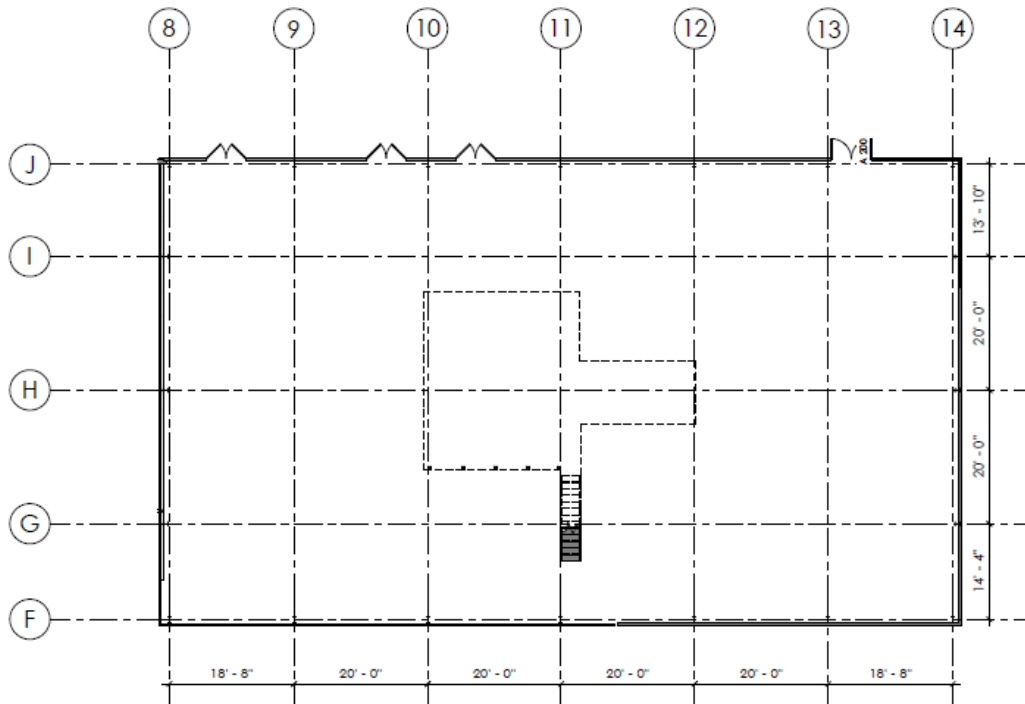
SITE PLAN



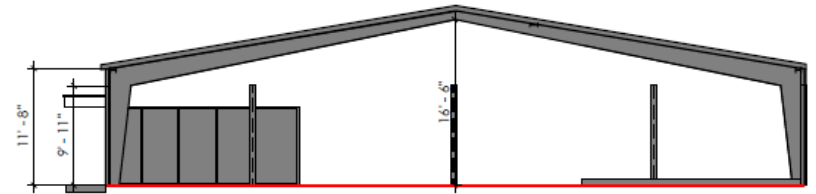
Todd Garrett, CCIM, SIOR
+1.843.408.8846
todd.garrett@harborcommercialpartners.com

Tradd Varner, SIOR
+1.843.532.1684
tradd.varner@harborcommercialpartners.com

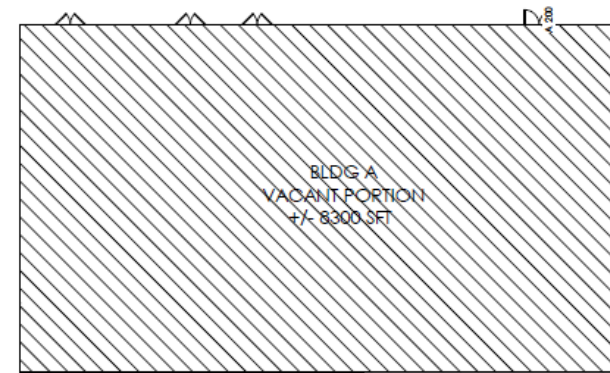
Crawford Riddle
+1.864.423.4973
crawford.riddle@harborcommercialpartners.com



1 BLDG A - COLUMN LOCATIONS
SCALE: 1/16" = 1'-0"



2 BLDG A - VACANT
SCALE: 3/32" = 1'-0"



3 BLDG A - VACANT SPACE
SCALE: 3/64" = 1'-0"



Contact us:

Todd Garrett, CCIM, SIOR
+1.843.408.8846
todd.garrett@harborcommercialpartners.com

Tradd Varner, SIOR
+1.843.532.1684
tradd.varner@harborcommercialpartners.com

Crawford Riddle
+1.864.423.4973
crawford.riddle@harborcommercialpartners.com

146 Williman Street, Units 300 & 400
Charleston, SC 29403
www.harborcommercialpartners.com
+1.843.994.7198

