

19,950 SF Warehouse & Showroom

For Sale or Lease
Available 1/31/2026

5833 Treaschwig Road • Houston, TX 77



For Lease: \$14,750 / month , NNN (\$.74/SF/month)

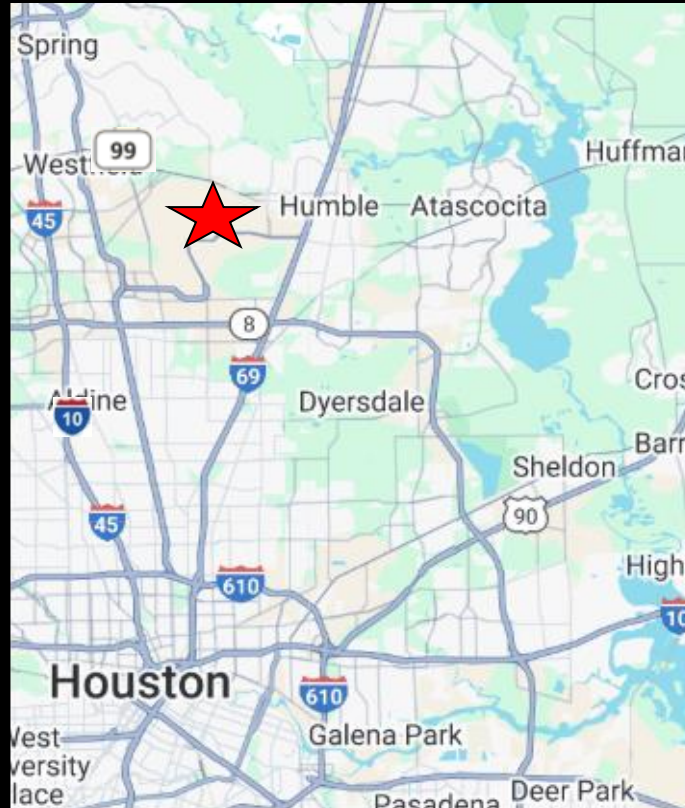
For Sale: \$1,950,000 (\$97.74/SF)

Location:

- Northeast Houston between I-45 & I-69
- 5 miles east of I-45
- 2 miles north of FM 1960 East

Features:

- 19,950 SF warehouse & showroom
- Single tenant, 100% buildout
- 11,725 SF of showroom
- 8,275 SF of archery range (warehouse)
- 100% HVAC; no fire sprinkler system
- 9 marked parking spaces on site with 30+ available at the church next door
- Eave heights: 18' and 16'
- 1.75 ac site with onsite detention pond
- Utilities from Post Wood MUD
- Low tax rate of \$.0237
- **OUTSIDE HOUSTON CITY LIMITS !!!**



Capital Real Estate Commercial, Inc.

www.cretx.com

7720 Westview Drive • Houston, TX 77055

Phone (713) 681-1100 • Fax (713) 681-1114

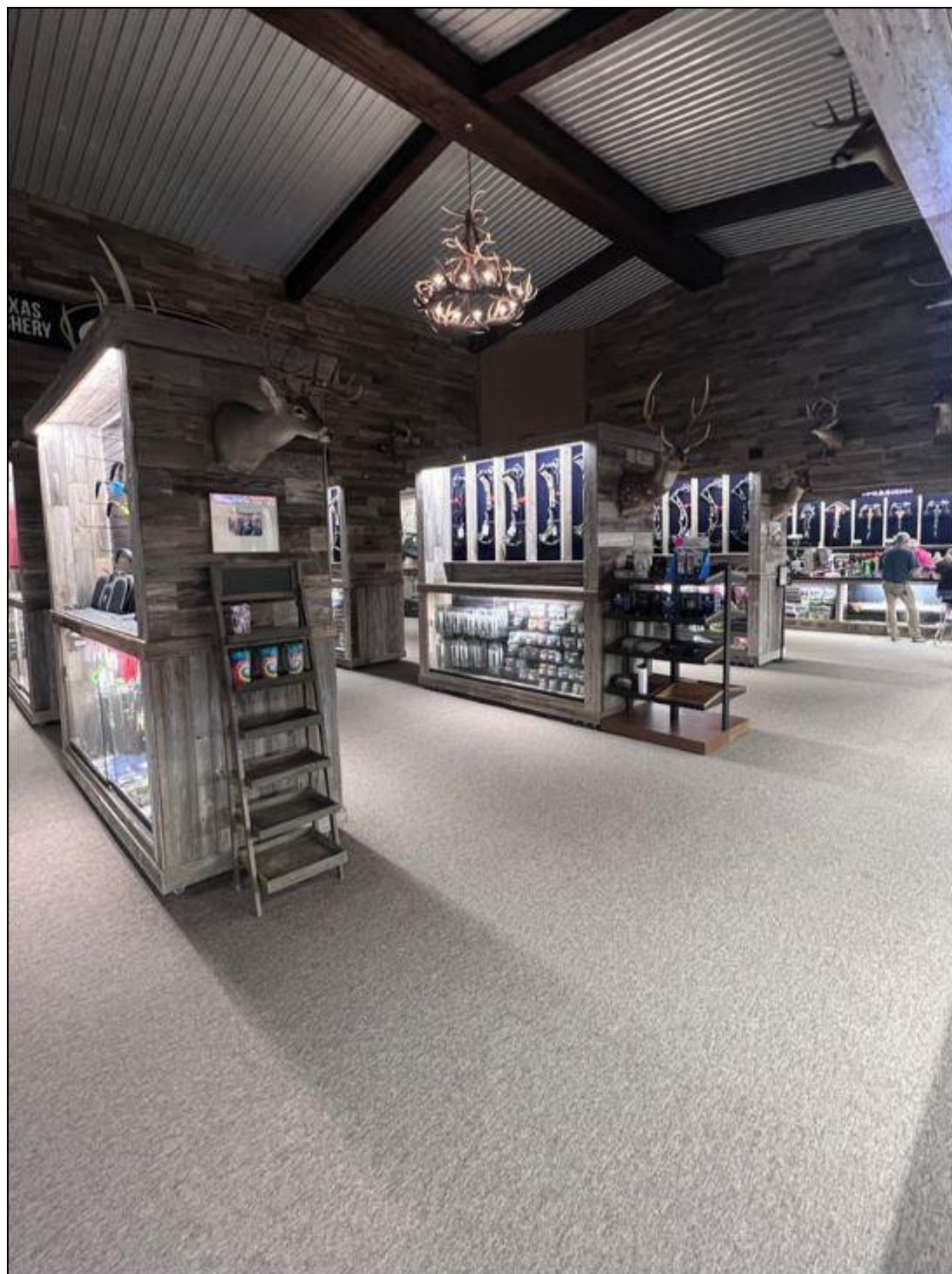
Hart Schleicher (713) 907-3570

hart@cretx.com

Marc Deer

(281) 808-0850

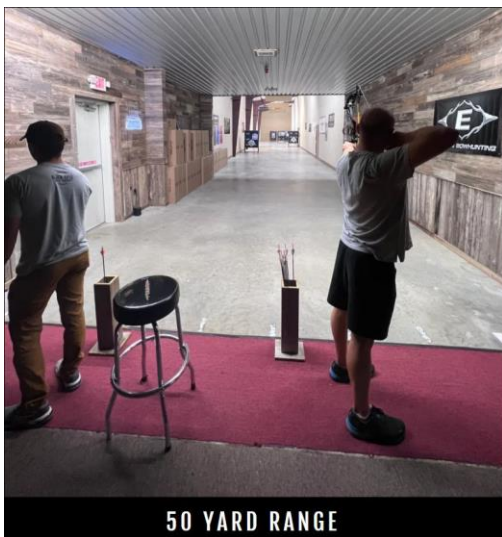
marc@mldeer.com



OUR SHOW ROOM

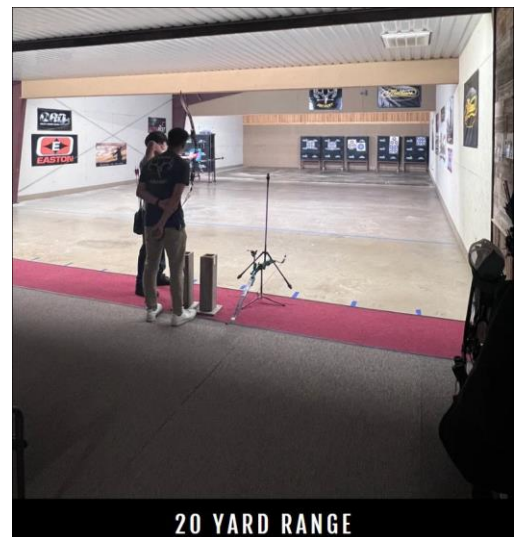


40 YARD 3D RANGE



50 YARD RANGE

Some
interior
views of
the
shooting
areas



20 YARD RANGE