



### PROPERTY DESCRIPTION

This 2,000 SF warehouse is for lease near the Lakeland Linder Airport. The land use is BPC-2 (business park center) which allows industrial, manufacturing, showroom, storage, and some retail uses.

The space is 2,000 SF with 1 10'x10' grade level motorized door, 16' clear height, 200 SF air-conditioned office with kitchen and restroom, and a mezzanine for additional storage. The office furniture and shelving in the warehouse could remain.

Strategically located in Lakeland in the industrial hub of Central Florida near the airport, quick access to Polk Parkway, I-4 (Tampa & Orlando), and Hwy 60 (Fort Myers & Miami/South Florida).

### PROPERTY HIGHLIGHTS

- 2,000 SF of warehouse with 200 SF office
- 16' clear height with 10'x10' grade level access
- Strategically located in Lakeland near the airport

### OFFERING SUMMARY

Lease Rate:	Call 863-250-2502 for pricing
Available SF:	2,000 SF
Lot Size:	0.04 Acres
Office Size:	200 SF
Clear Height:	16'
Year Built:	1989
Zoning:	BCP-2 (Business Park Center)

DEMOGRAPHICS	15 MILES	30 MILES	60 MILES
Total Households	207,470	790,755	2,771,675
Total Population	559,947	2,106,946	7,029,032
Average HH Income	\$91,992	\$94,335	\$97,983

ALEX DELANNOY, SIOR

863.250.2502  
adelannoy@ruthvens.com

View Property  
Website



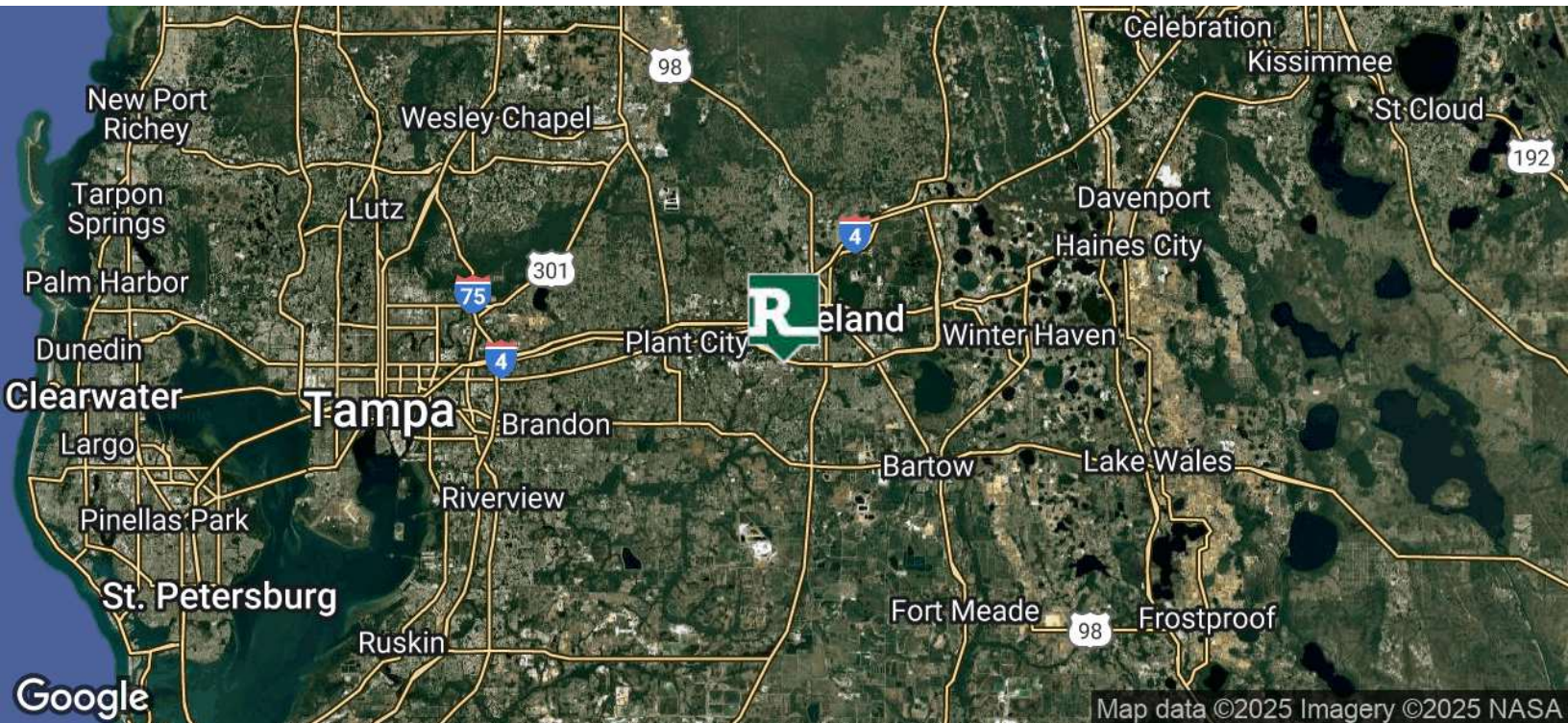


## WARING INDUSTRIAL PARK WAREHOUSE

3903 INDUSTRY BLVD, LAKELAND, FL 33811

Central Florida's  
Warehouse Specialist

FOR LEASE



ALEX DELANNOY, SIOR

863.250.2502  
adelannoy@ruthvens.com

View Property  
Website





Central Florida's  
Warehouse Specialist

## WARING INDUSTRIAL PARK WAREHOUSE

3903 INDUSTRY BLVD, LAKELAND, FL 33811

FOR LEASE



### CITY OF LAKELAND

Lakeland has always been a hub of innovation and progressive ideas. Today, the City continues to thrive as population and business expansions are attracted to this area, the geographic center of Florida. Lakeland's economic base consists of warehouse, transportation and distribution, education, health care, manufacturing and retail.

Lakeland has received the distinction of being on Money Magazine's "Best Place to Live in America" list. In addition, Lakeland is home to Publix Supermarkets, Amazon, Florida Southern College and is the winter home to the Detroit Tigers.



### LARGEST EMPLOYERS IN LAKELAND NEARBY

Headquartered within one mile from subject property in Lakeland, Publix is Florida's largest private employer. In 2018, they announced it would hire those additional 700 employees to fill a 190,000 square foot office addition bringing their total employment in Lakeland to over 8,000.

On top of their current corporate offices located within a couple of miles of subject property, Geico recently expanded their regional office by another 50,000 square feet. This expansion resulted in a \$12 million capital investment 500 new High-Skill, High-Wage jobs, bringing their Lakeland employment to 3,700.



### AMAZON FULFILLMENT AND PRIME AIR HUB

In 2014, Amazon constructed and opened a new 1,000,000+ square foot fulfillment center located on County Line Road with 900+ employees, since then Amazon continued to chose Lakeland and not only quadruple their size in Polk County but relocated their Amazon Air HUB in 2020 to Lakeland International Airport from Tampa with a new 285,000 square feet facility creating thousands of jobs.

In 2021, they announce an expansion that will more than double their capacity making it the largest Amazon facility in the Southeast in 2022 with another 464,000 square feet and hundreds of new jobs

ALEX DELANNOY, SIOR

863.250.2502  
adelannoy@ruthvens.com

View Property  
Website





Central Florida's  
Warehouse Specialist

## WARING INDUSTRIAL PARK WAREHOUSE

3903 INDUSTRY BLVD, LAKELAND, FL 33811

FOR LEASE



ALEX DELANNOY, SIOR

863.250.2502  
adelannoy@ruthvens.com

View Property  
Website





# WARING INDUSTRIAL PARK WAREHOUSE

3903 INDUSTRY BLVD, LAKELAND, FL 33811

Central Florida's  
Warehouse Specialist

FOR LEASE

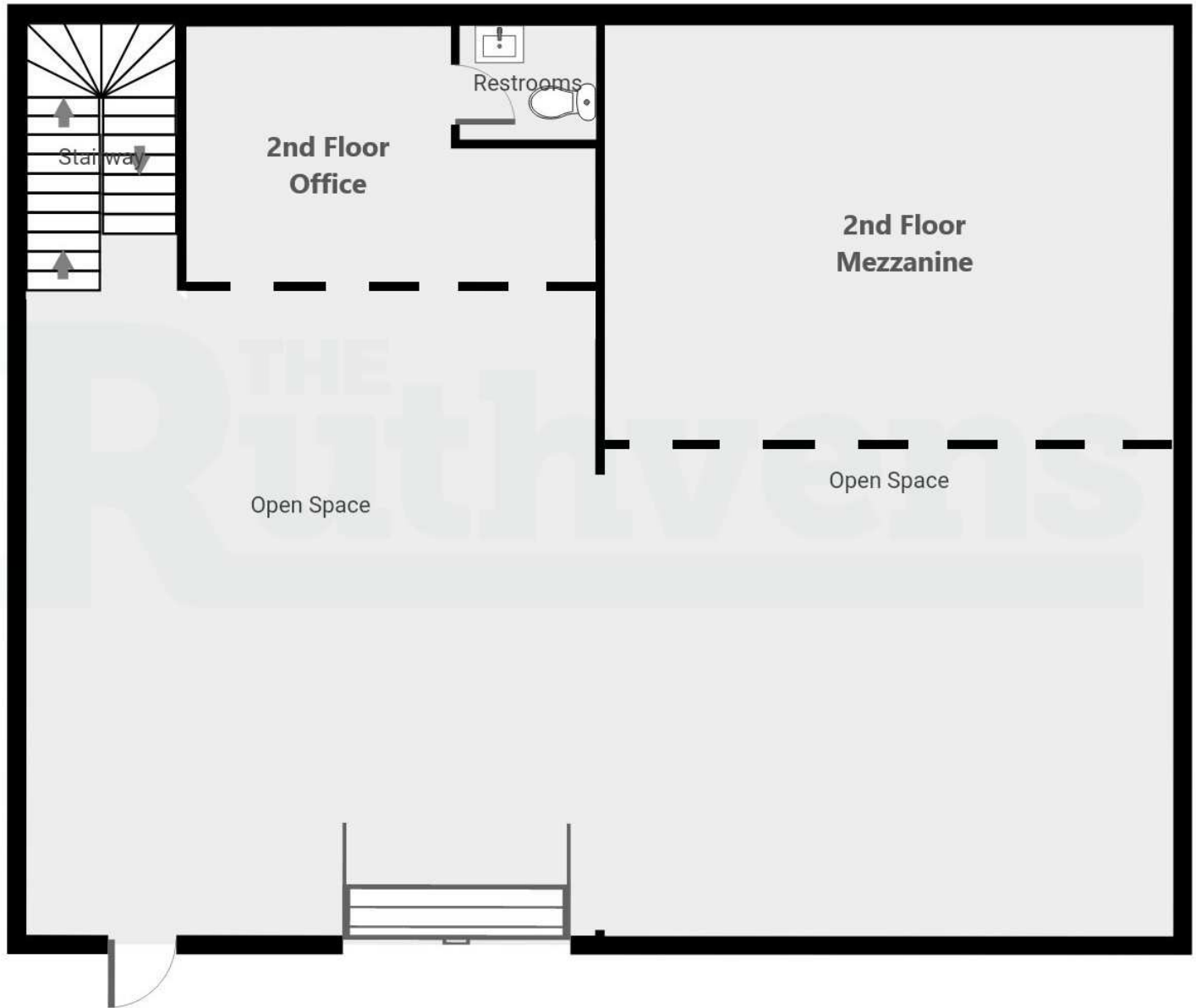


ALEX DELANNOY, SIOR

863.250.2502

adelannoy@ruthvens.com

View Property  
Website

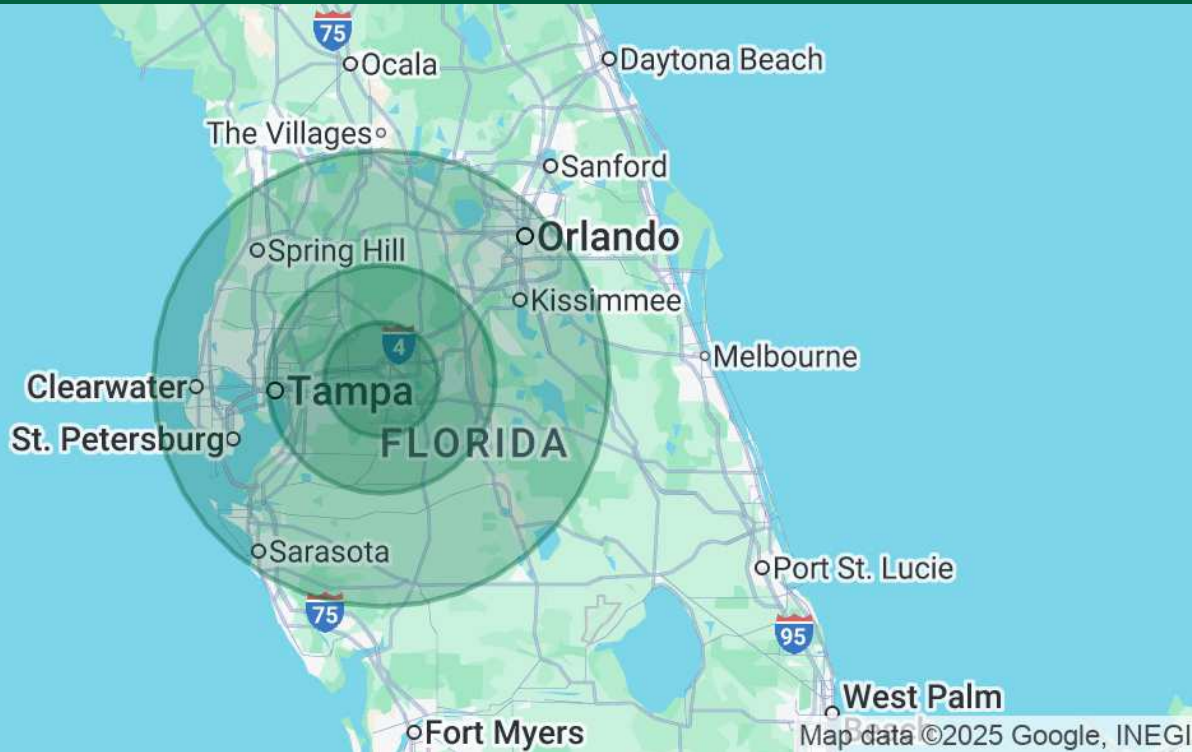


ALEX DELANNOY, SIOR

863.250.2502  
adelannoy@ruthvens.com

View Property  
Website





POPULATION	15 MILES	30 MILES	60 MILES
Total Population	559,947	2,106,946	7,029,032
Average Age	41	41	43
Average Age (Male)	40	40	42
Average Age (Female)	42	42	43

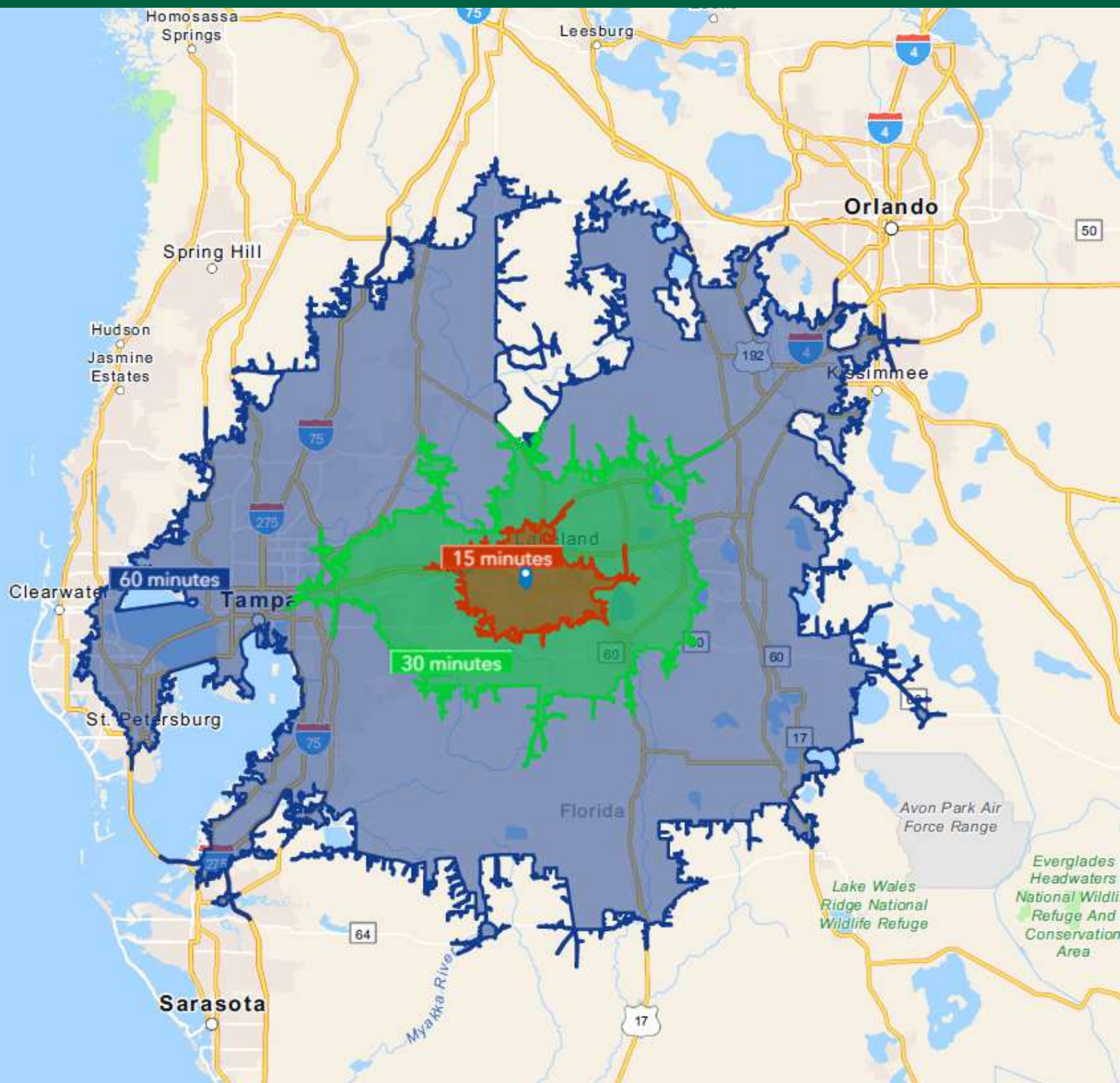
HOUSEHOLDS & INCOME	15 MILES	30 MILES	60 MILES
Total Households	207,470	790,755	2,771,675
# of Persons per HH	2.7	2.7	2.5
Average HH Income	\$91,992	\$94,335	\$97,983
Average House Value	\$305,339	\$337,331	\$381,806

Demographics data derived from AlphaMap

ALEX DELANNOY, SIOR

863.250.2502  
adelannoy@ruthvens.com

View Property  
Website



ALEX DELANNOY, SIOR

863.250.2502  
adelannoy@ruthvens.com

[View Property Website](#)





### ALEX DELANNOY, SIOR

Vice President of Brokerage

adelannoy@ruthvens.com

Direct: **863.250.2502** | Cell: **863.250.2502**

### PROFESSIONAL BACKGROUND

Alex Delannoy was born and raised in Toulouse, France, with a strong drive and burning desire to discover new experiences and knowledge. His travels through Europe and throughout the world have created a great passion for the diversity and culture he experienced.

Alex became a professional paintball player and came to the United States in 2010 when he joined one of the top teams in the league in the Tampa, FL area. After spending a few years with the team, his entrepreneurial spirit drove him to start his own business in Winter Haven, FL called Action Paintball & Laser Tag. The facility included a retail pro-shop, more than 30 trained employees, room for five different onsite activities, and became a thriving business with more than 35,000 players over the years. The business was purchased by an investor in early 2017.

He joined The Ruthvens in 2022 and leads the charge on our brokerage properties and services. He made a successful name for himself as a senior advisor at KW Commercial, where he built a book of commercial real estate business and managed brokerage assets in the Central Florida area for five years. Alex is known for providing results by creating opportunities through analyzing a problem and finding a durable solution by using all resources available. Alex is always looking at new ways to add value and skills, and his experience in his craft and in the community is a big reason he's a trusted resource to head up the brokerage properties division at The Ruthvens.

### EDUCATION

FGCAR Commercial Real Estate University Courses

Lipsey School of Real Estate - Commercial MICP Designation

### MEMBERSHIPS

Society of Industrial and Office Realtors (SIOR), Florida Regional Director & Tech Chair

Certified Commercial Investment Member Institute (CCIM), Candidate

Manufacturing & Supply Chain of Mid Florida

NAIOP Member of Central Florida

National Realtor Association

Lakeland Realtor Association

### ALEX DELANNOY, SIOR

863.250.2502

adelannoy@ruthvens.com

View Property  
Website