

FOR LEASE:

460 Sq. Ft. Office Suite

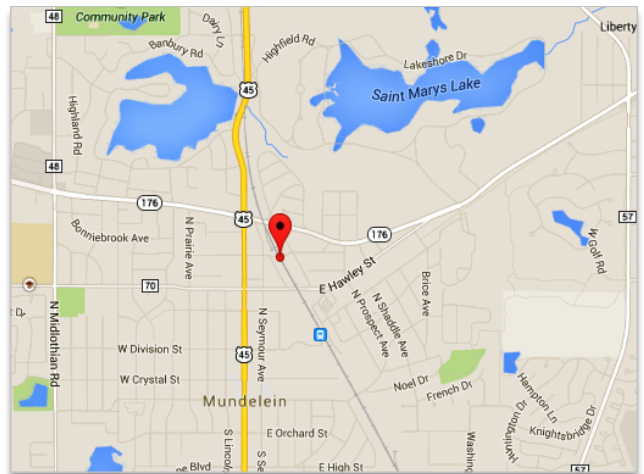
209 E. Park Street ▪ Suite A ▪ Mundelein ▪ IL 60060



BUILDING FEATURES:

AVAILABLE SPACE:	460 SQ. FT.
BASE RENT:	\$600 / MONTH GROSS
BUILDING TYPE:	OFFICE COMPLEX
BUILDING CONSTRUCTION:	BLOCK/DRYVIT
LOT SIZE:	COMMON
CEILING HEIGHT:	8' CLEAR
POWER:	200 AMPS/240 VOLT
HVAC:	GAS FORCED AIR
PARKING:	EXCELLENT—COMMON PARKING
UTILITIES:	INCLUDED

COMMENTS: VERY NICE HARD TO FIND SMALL OFFICE SUITE.
PRIVATE ENTRANCE, DOUBLE STORAGE CLOSETS, OPEN OFFICE .



DIRECTIONS: MORRIS & PARK, SOUTH OF ROUTE 176,
ROUTE 45 TO PARK ST., EAST TO JUST PAST TRACKS.

[Google Maps Link](#)

Contact: [Ken Eichelberger](#) @ 847-533-7144 (Cell) / jcf.ike@sbcglobal.net

JC **FORNEY** INC
REALTY

Commercial / Industrial / Investment
Serving Lake County Since 1935

131 West Park Avenue • Libertyville • IL • 60048
www.jcforneyrealty.com
Office: (847) 362-2000

All information contained herein is from sources deemed reliable and is submitted subject to errors, omissions, and change without notice

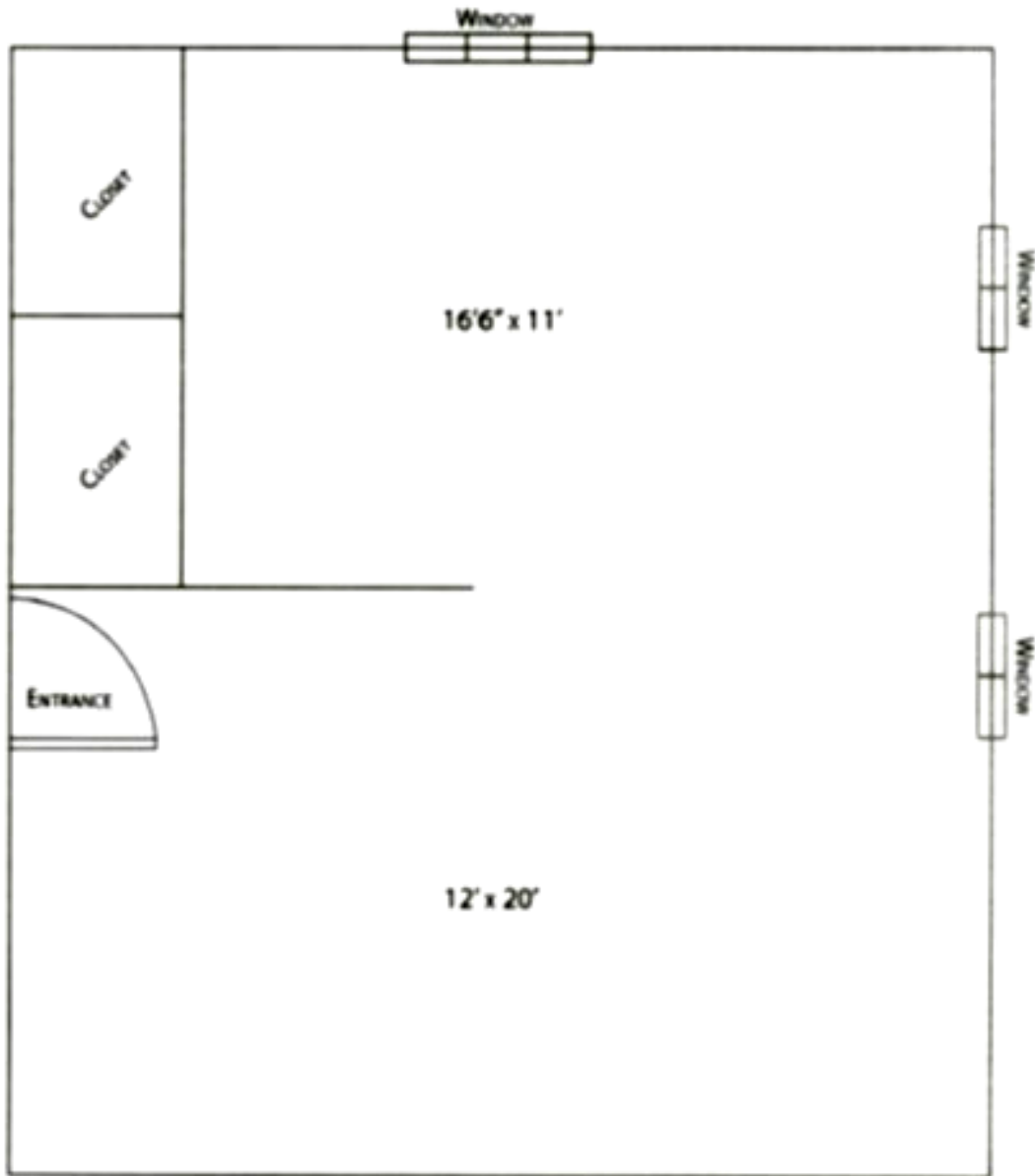
FOR LEASE:

460 Sq. Ft. Office Suite

209 E. Park Street ▪ Suite A ▪ Mundelein ▪ IL 60060

**209 E. PARK SUITE A
MUNDELEIN, IL**

**20' x 23'
460 SQ.FT.**



Contact: [Ken Eichelberger](#) @ 847-533-7144 (Cell) / jcf.ike@sbcglobal.net

JC **FORNEY** INC
REALTY

Commercial / Industrial / Investment
Serving Lake County Since 1935

131 West Park Avenue • Libertyville • IL • 60048
www.jcforneyrealty.com
Office: (847) 362-2000

All information contained herein is from sources deemed reliable and is submitted subject to errors, omissions, and change without notice