

55508

STATE HIGHWAY 19

WINTHROP, MINNESOTA

For Sale Or Lease  
82,070 SF



CUSHMAN &  
WAKEFIELD

# // PROPERTY FEATURES



**13'-20'** CLEAR HEIGHT



**14.00 ACRES**  
WITH ROOM FOR EXPANSION  
OR OUTDOOR STORAGE



**5,030 SF** OFFICE SPACE



**7 DOCKS | 5 DRIVE-INS**



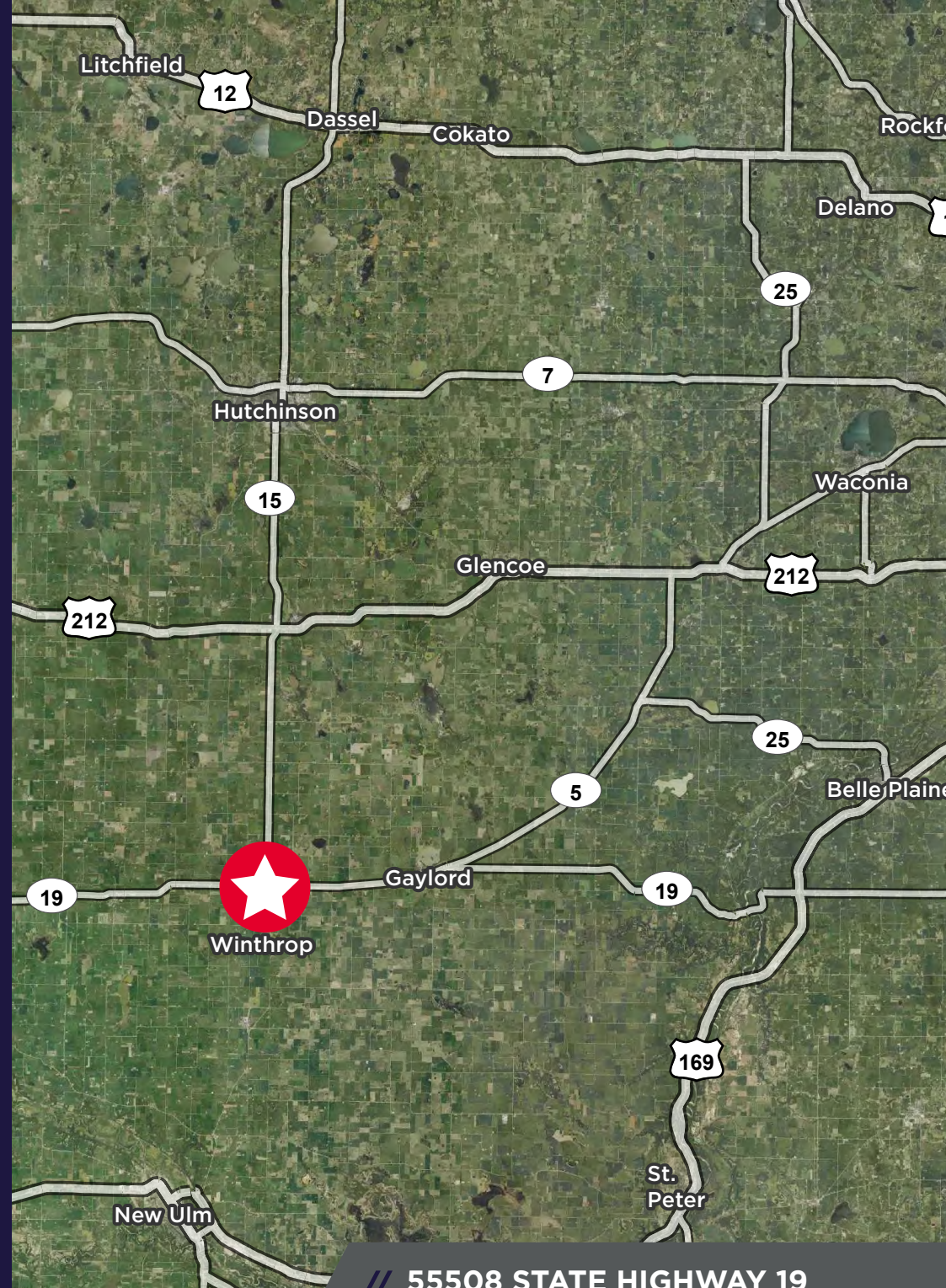
**BUILT IN 1978**



**30 PARKING SPACES**

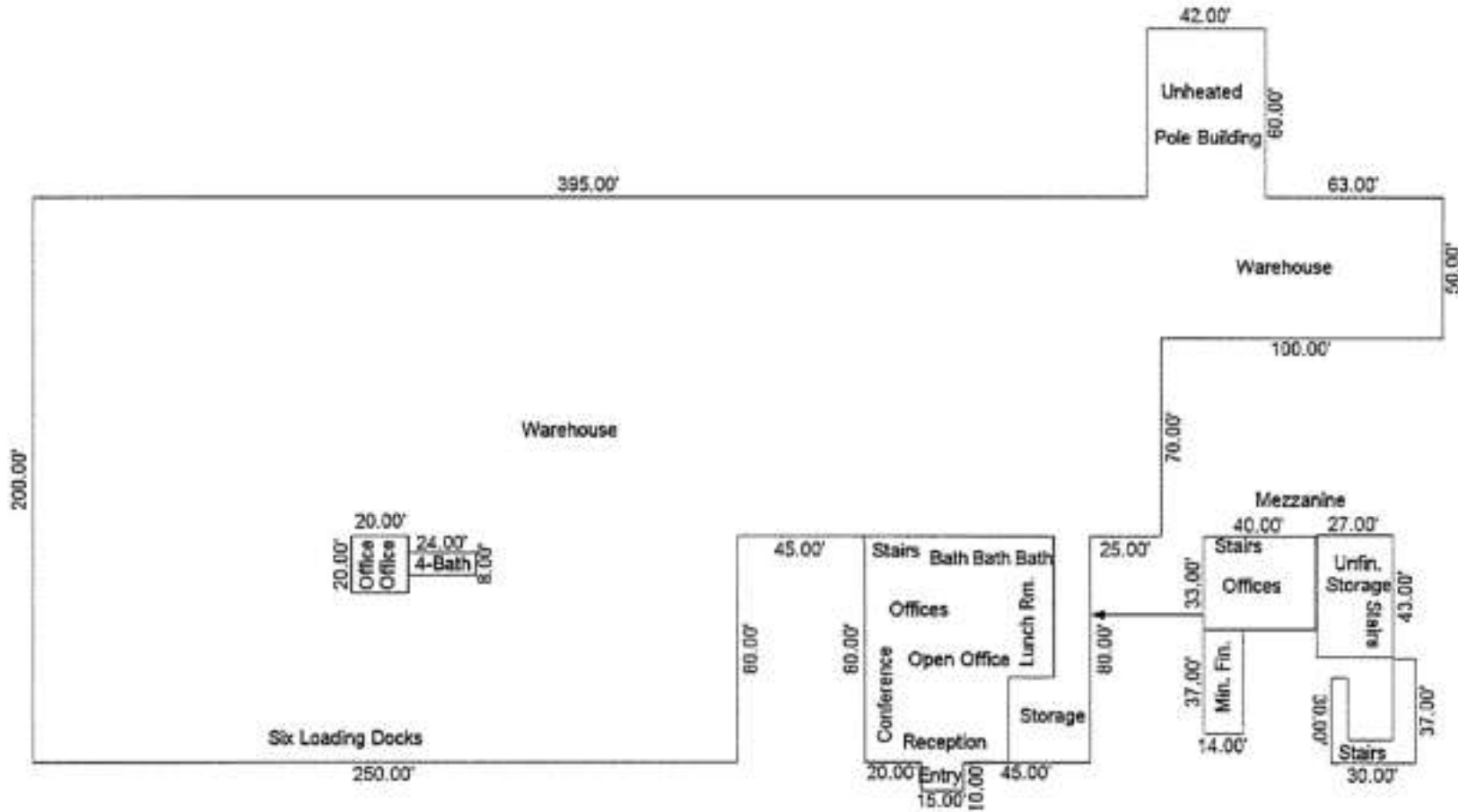


**\$2,875,000 (\$35 PSF)**



// **55508 STATE HIGHWAY 19**  
**WINTHROP, MINNESOTA**

# // FLOOR PLANS



# // GALLERY



# // GALLERY



# 55508

## STATE HIGHWAY 19

### WINTHROP, MINNESOTA



### CONTACT

TODD HANSON  
Senior Director  
+1 952 820 8737  
todd.hanson@cushwake.com

JASON SELL  
Senior Director  
+1 952 837 8515  
jason.sell@cushwake.com

JORDAN DICK  
Director  
+1 952 204 7631  
jordan.dick@cushwake.com

STELLA DOLAN  
Associate  
+1 952 893 8823  
stella.dolan@cushwake.com

©2026 Cushman & Wakefield. All rights reserved. The information contained in this communication is strictly confidential. This information has been obtained from sources believed to be reliable but has not been verified. NO WARRANTY OR REPRESENTATION, EXPRESS OR IMPLIED, IS MADE AS TO THE CONDITION OF THE PROPERTY (OR PROPERTIES) REFERENCED HEREIN OR AS TO THE ACCURACY OR COMPLETENESS OF THE INFORMATION CONTAINED HEREIN, AND SAME IS SUBMITTED SUBJECT TO ERRORS, OMISSIONS, CHANGE OF PRICE, RENTAL OR OTHER CONDITIONS, WITHDRAWAL WITHOUT NOTICE, AND TO ANY SPECIAL LISTING CONDITIONS IMPOSED BY THE PROPERTY OWNER(S). ANY PROJECTIONS, OPINIONS OR ESTIMATES ARE SUBJECT TO UNCERTAINTY AND DO NOT SIGNIFY CURRENT OR FUTURE PROPERTY PERFORMANCE.