

FOR LEASE

PROFESSIONAL/MEDICAL OFFICE

401 Eastern Shore Drive | Salisbury, MD



Lease Price: \$1,200/ Month Rent plus Utilities

Square Feet: 1,400+/- SF OF OFFICE

PROPERTY OVERVIEW: 1,400 SF 2nd floor professional/medical office building
Open office concept with two private offices, large conference/storage room and bathroom.
Front entrance with stairs leading to the 2nd floor.
One block from Tidal Health.



RINNIER
DEVELOPMENT COMPANY

218 East Main Street
Salisbury, MD 21801
www.rinnier.com

Blair Rinnier, CCIM, CPM
410.742.8151
brinnier@rinnier.com

PROFESSIONAL/MEDICAL OFFICE

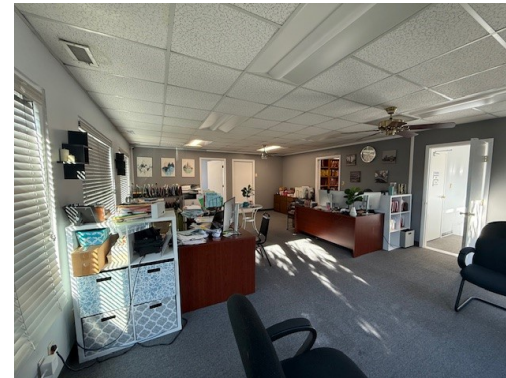
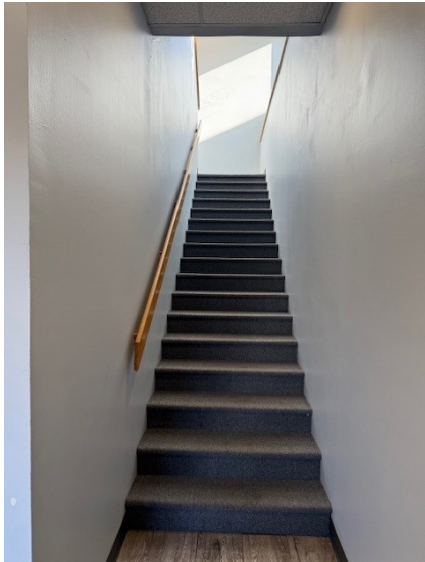


Blair Rinnier, CCIM, CPM
410.742.8151
brinnier@rinnier.com

PHOTOS

PROFESSIONAL/MEDICAL OFFICE

401 Eastern Shore Drive, Salisbury, MD



RINNIER
DEVELOPMENT COMPANY

218 East Main Street
Salisbury, MD 21801
www.rinnier.com

Blair Rinnier, CCIM, CPM
410.742.8151
brinnier@rinnier.com