

- BTS (BUILD-TO-SUIT) – UP TO 1,000,000 SF
- ±214,479 SF (BUILDING A)
- FULLY ENTITLED



HEDGE
INDUSTRIAL PARK
— NORTH —

STATE-OF-THE-ART INDUSTRIAL DEVELOPMENT



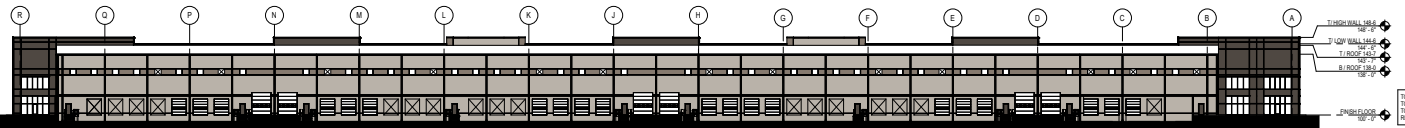
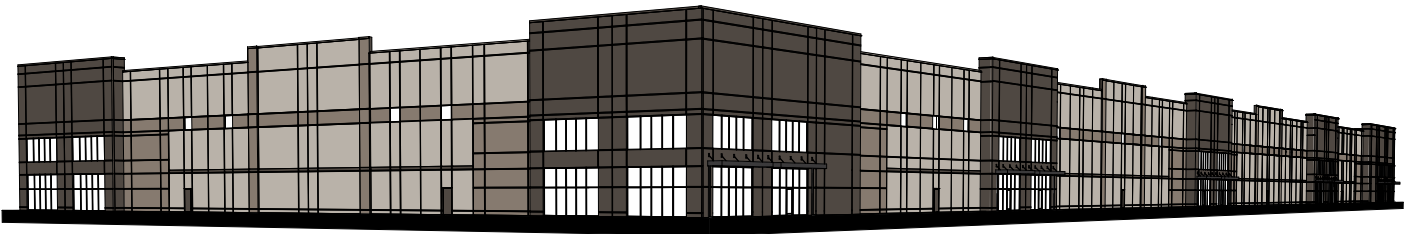
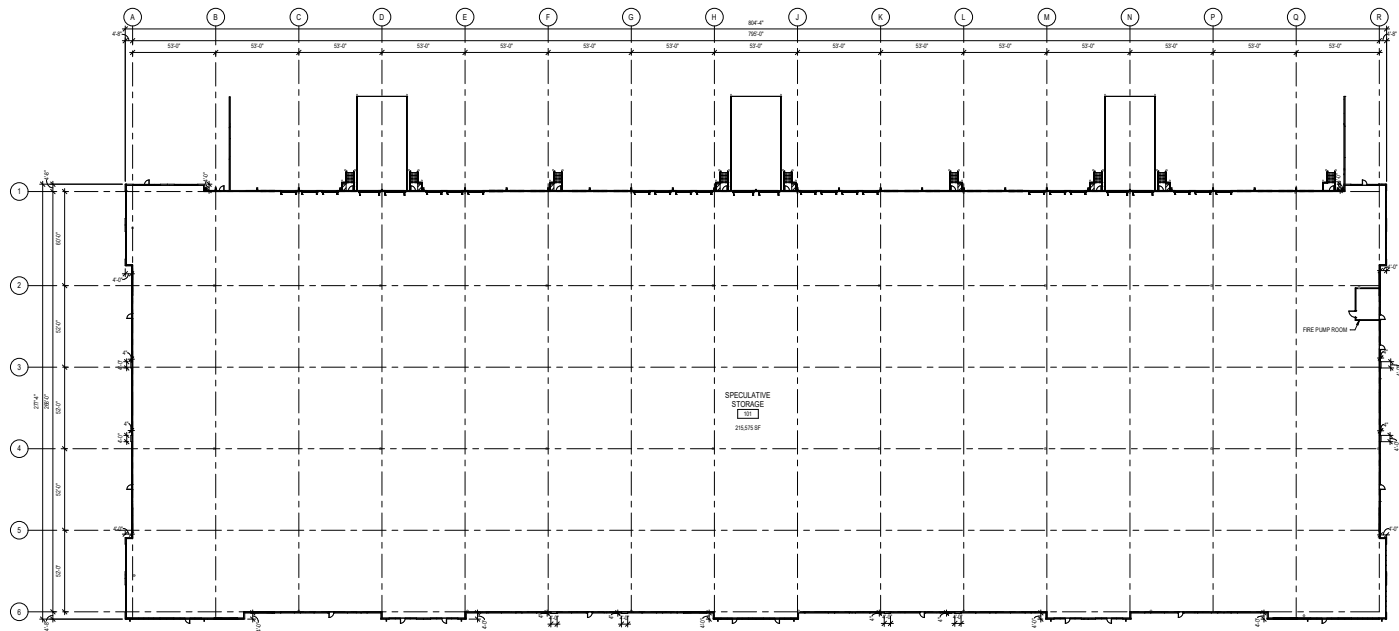
SEC 167TH ST & HEDGE LN • OLATHE, KANSAS



BUILDING A SPECIFICATIONS

HEDGE INDUSTRIAL PARK – NORTH

BUILDING A BUILDING SIZE:	214,479 SF
CLEAR HEIGHT:	32'+
LOADING:	Twenty (20) - 9'x10' Dock Doors Six (6) - 12'x14' Drive-in Doors (Additional 18 Docks can be added)
COLUMN SPACING:	52'x53' with 60' Speed Bay
CONSTRUCTION:	Concrete Tilt
ROOF:	60mil TPO
LIGHTING:	LED
HIGHWAY ACCESS:	I-35, Hwy 169
SPRINKLER:	ESFR
TRAILER COURT DEPTH:	135'+ Deep



PARK DETAILS

HEDGE INDUSTRIAL PARK – NORTH

Hedge Industrial Park – North is located in Olathe, Kansas between I-35, Highway 169, and 175th Street. This new development project offers unparalleled highway access and seamless connectivity to the Kansas City Metro. The first speculative building (Building A) will deliver Q1 of 2026.



HEDGE
INDUSTRIAL PARK
— NORTH —

DRIVE TIMES

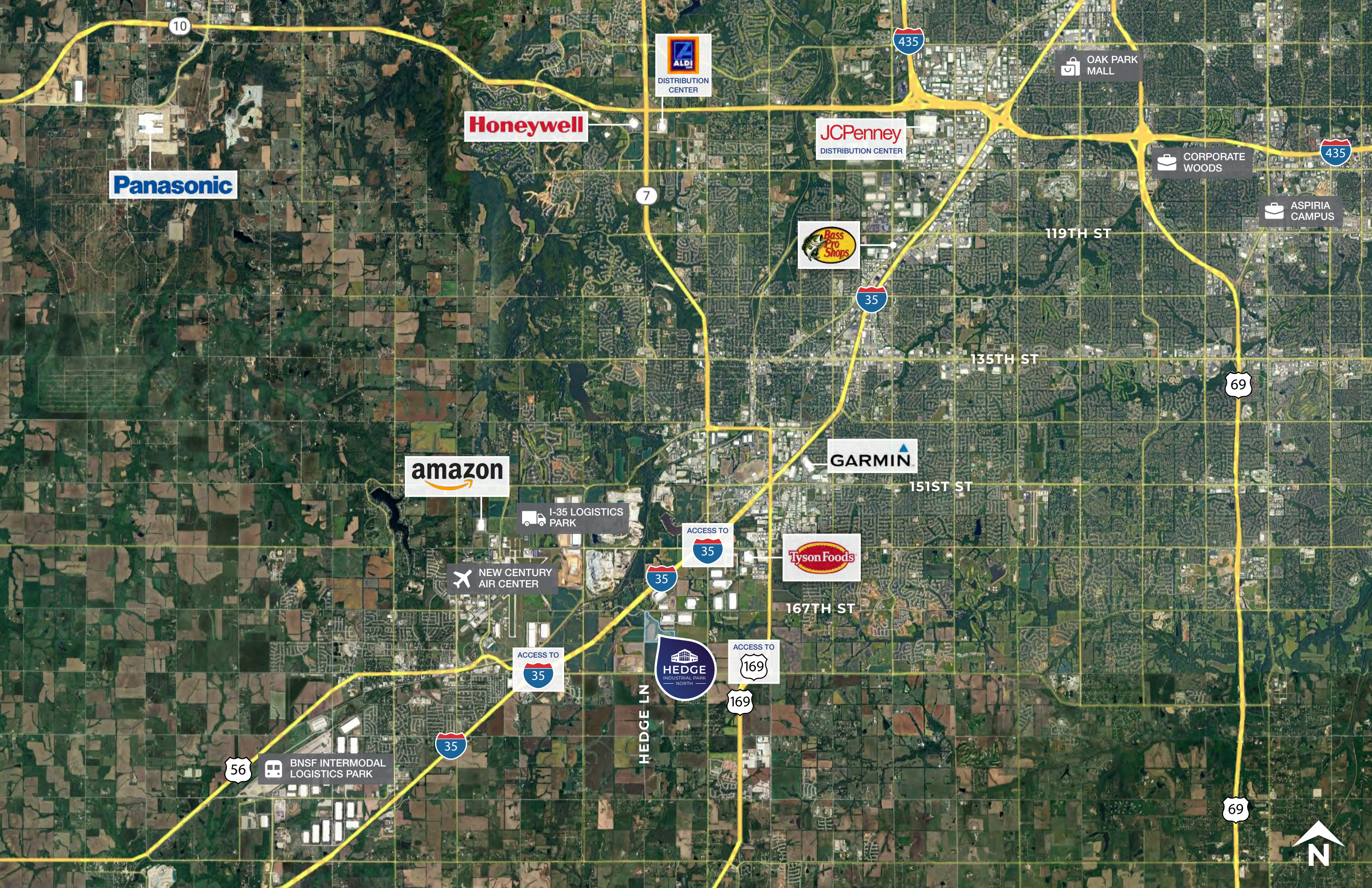
2.4 MILES
INTERSTATE 35

2.7 MILES
HIGHWAY 169

5 MILES
NEW CENTURY AIRPORT

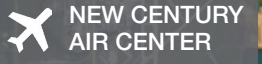
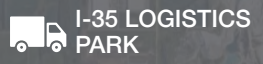
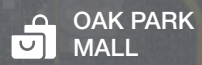
11 MILES
BNSF INTERMODAL





Panasonic

Honeywell



DRIVE TIME MAP

HEDGE INDUSTRIAL PARK – NORTH

WICHITA	2 Hrs 29 Mins
TULSA	3 Hrs 32 Mins
ST. LOUIS	4 Hrs 6 Mins
OKLAHOMA CITY	4 Hrs 38 Mins
DALLAS / FORT WORTH:	7 Hrs 31 Mins
DENVER	8 Hrs 32 Mins

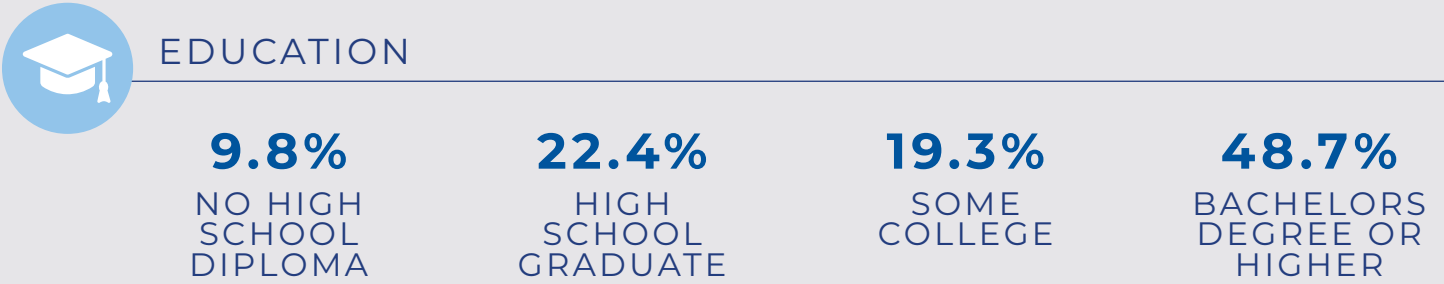
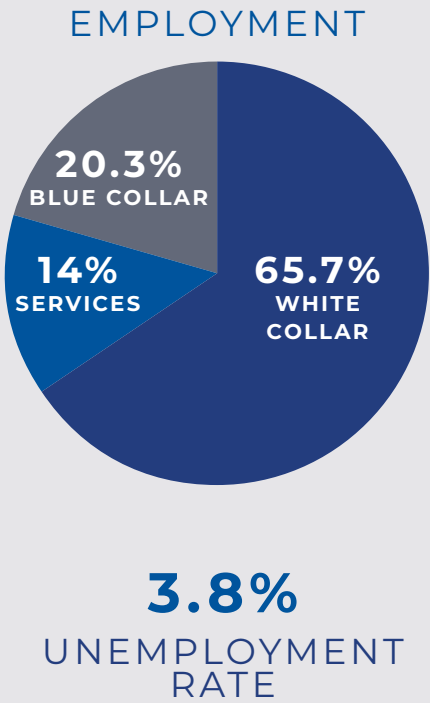
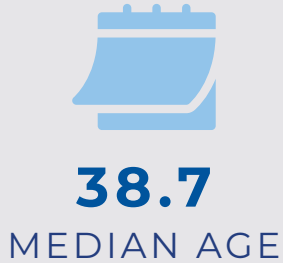
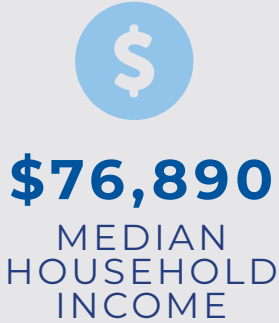


NAIHeartland
ASPEN FUNDS®



DEMOGRAPHICS

KANSAS CITY MSA



SITE PLAN

HEDGE INDUSTRIAL PARK – NORTH





NAIHeartland

ASPEN FUNDS®

HEDGE
INDUSTRIAL PARK
— NORTH —

WESTERN
AUTO

WHY KANSAS CITY?

The Kansas City market is a strategic hub for industrial operations. A prime location for your next industrial facility, Kansas City offers a central location, robust transportation network, strong utility infrastructure, available real estate, skilled workforce, and low operating costs.

 **TOP 15** INDUSTRIAL MARKET

 **TOP 10** US CITY FOR FOREIGN BUSINESS

 **190,000+** MANUFACTURING & LOGISTICS EMPLOYEES IN THE REGION

 **12TH HIGHEST** NET ABSORPTION AMONG TOP US INDUSTRIAL MARKETS


 **REACH 90%** OF THE CONTINENTAL UNITED STATES IN 2 DAYS OR LESS

 **4 CLASS 1 RAIL LINES** & 4 INTERMODAL PARKS

 BUSINESS FRIENDLY **FOREIGN TRADE ZONE**

 **LARGEST** NAVIGABLE INLAND WATERWAY IN THE US

 **NEW STATE-OF-THE-ART AIRPORT TERMINAL** THAT HANDLES MORE AIR CARGO THAN ANY AIR CENTER IN A SIX-STATE REGION

 **4 MAJOR INTERSTATE HIGHWAYS** WITH **30% MORE INTERSTATE MILES PER CAPITA** THAN ANY MAJOR US METRO

BIG THINGS ARE HAPPENING

IN KANSAS CITY



NEW KCI TERMINAL

In February 2023, Kansas City unveiled its state-of-the-art single terminal airport, featuring 40 gates, 6,200 garage parking spaces, and more than 50 shops and restaurants—over 80% of which are locally owned. With 157 daily departures, the new terminal has quickly become a major hub for travelers. Since its opening, it has seen record-breaking passenger traffic and has earned widespread recognition, including multiple national and international awards. In July 2024, it was ranked among the Top 10 airports in the U.S. by Travel + Leisure.



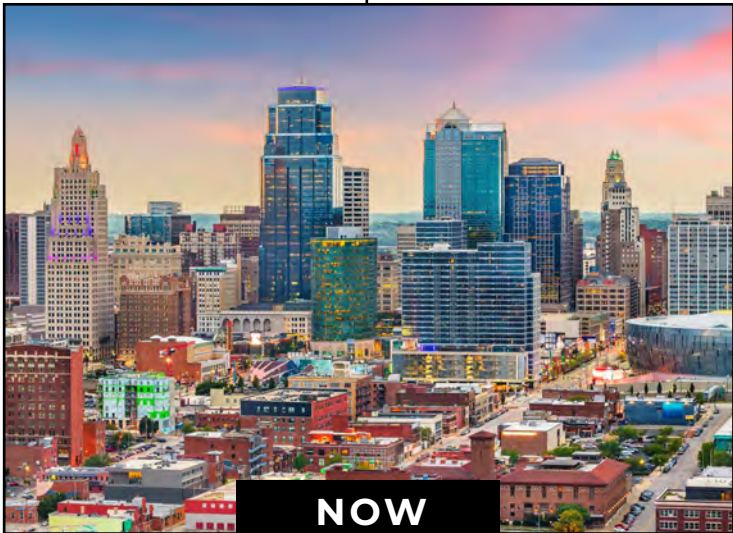
FIFA WORLD CUP

The Kansas City region is proudly known as the Heart of America—and it's also a premier destination for sports fans of all kinds. In 2026, the metro area will host six FIFA World Cup matches, including four group-stage fixtures and two knockout round games. Beyond hosting, Kansas City's impact stretches even further: KC-based firms are contributing to the design of 13 out of the 16 World Cup venues across North America, showcasing the region's world-class talent on a global stage.



KC CURRENT STADIUM

The Kansas City Current made history with the opening of CPKC Stadium—the first stadium in the world purpose-built exclusively for a professional women's soccer team. The 11,500-seat venue hosted its inaugural match in March 2024 and stands as a bold symbol of progress in women's sports. The team and stadium are backed by high-profile co-owners Brittany and Patrick Mahomes, the superstar quarterback of the Kansas City Chiefs, and his wife, whose support has helped elevate the club on and off the field.



REGIONAL WINS

Between 2020 and 2024, the Kansas City metro added 58,291 new residents—outpacing population growth in major cities like Boston, Chicago, Cincinnati, Minneapolis, and Philadelphia, according to the U.S. Census Bureau. Kansas City also ranks as a top Midwestern market for net migration, attracting new residents from states including Texas, California, Colorado, Illinois, Florida, and many more. Looking ahead, the region is projected to grow another 9.5% by 2040. Kansas City is also a national logistics powerhouse—home to the largest rail center in the U.S. by tonnage—and boasts a manufacturing workforce that's 16.4% more productive than the national average.



HEDGE

INDUSTRIAL PARK NORTH

BTS (BUILD-TO-SUIT) – UP TO 1,000,000 SF | ±214,479 SF (BUILDING A) | FULLY ENTITLED

SEC 167TH ST & HEDGE LN • OLATHE, KANSAS

BRENT PETERSON, SIOR

+1 913 890 2016

brent@nai-heartland.com

SETH SINOVIC

+1 913 890 2012

seth@nai-heartland.com

EVAN CALKINS

+1 913 890 2017

evan@nai-heartland.com

DAN SCHULTE

Managing Director

Aspen Funds

NO WARRANTY OR REPRESENTATION, EXPRESS OR IMPLIED, IS MADE AS TO THE ACCURACY OF THE INFORMATION CONTAINED HEREIN, AND THE SAME IS SUBMITTED SUBJECT TO ERRORS, OMISSIONS, CHANGE OF PRICE, RENTAL OR OTHER CONDITIONS, PRIOR SALE, LEASE OR FINANCING, OR WITHDRAWAL WITHOUT NOTICE, AND OF ANY SPECIAL LISTING CONDITIONS IMPOSED BY OUR PRINCIPALS NO WARRANTIES OR REPRESENTATIONS ARE MADE AS TO THE CONDITION OF THE PROPERTY OR ANY HAZARDS CONTAINED THEREIN ARE ANY TO BE IMPLIED.

