



THOMAS
architecture studios

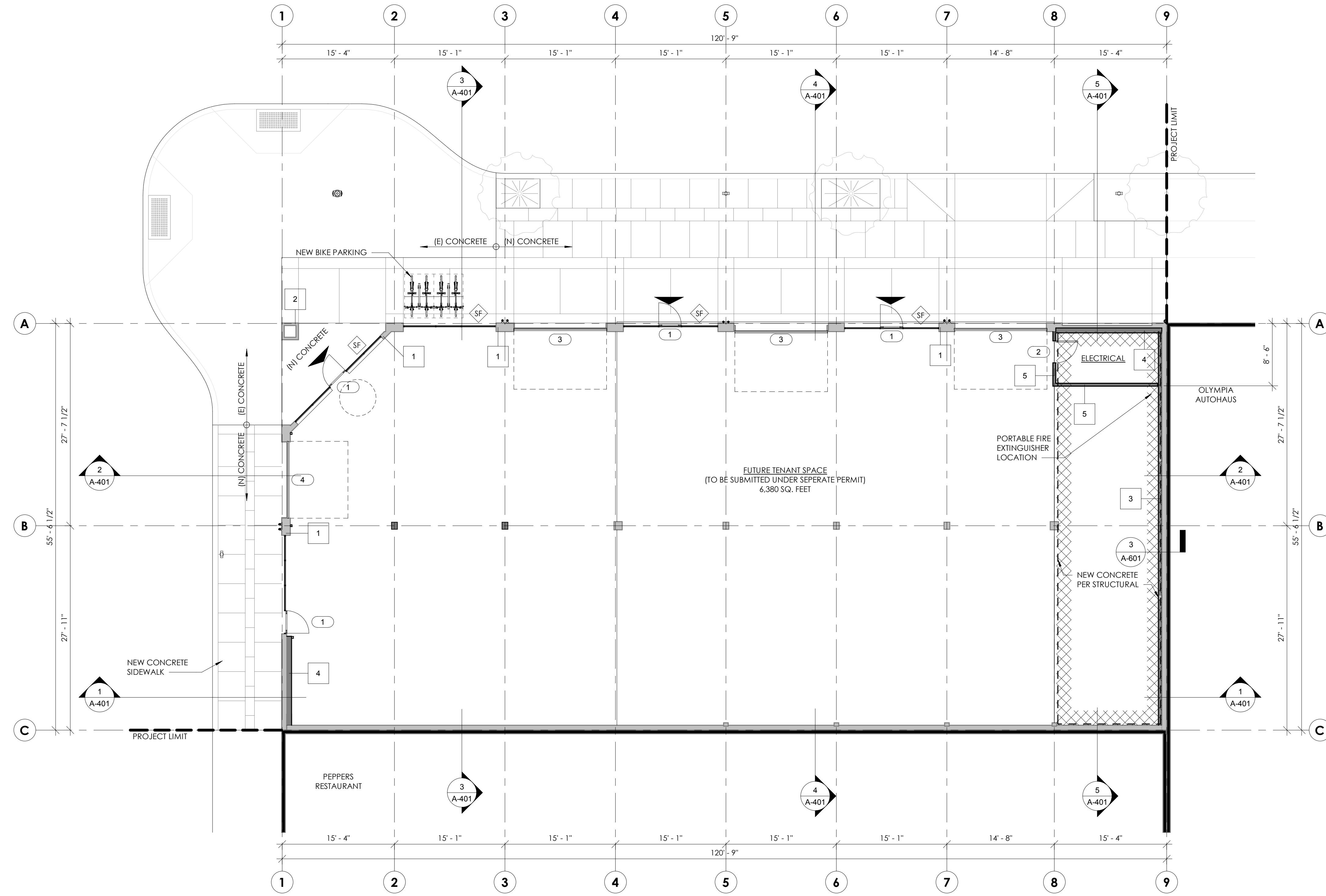
525 COLUMBIA ST. | OLYMPIA, WA 98501
360.915.8775 | tosolympia.com

GENERAL NOTES

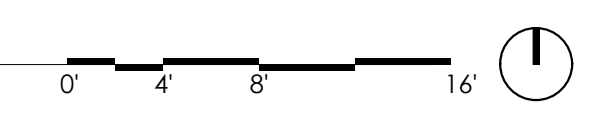
1. THESE DRAWINGS FOR GENERAL BUILDING AND SITE LAYOUT. SEE SEPARATE CIVIL DRAWINGS FOR FURTHER SITE DEVELOPMENT SPECIFICS.
2. INTERIOR TENANT IMPROVEMENTS TO BE SUBMITTED UNDER SEPARATE PERMIT.

PLAN LEGEND

- ARROW INDICATES PRIMARY BUILDING ENTRANCE
- SECTION MARKER, NUMBER BELOW INDICATES PAGE WHERE SECTION CAN BE FOUND, NUMBER ABOVE INDICATES THE SECTION LOCATION ON THE PAGE.
- DETAIL MARKER, NUMBER BELOW INDICATES PAGE WHERE DETAIL CAN BE FOUND, NUMBER ABOVE INDICATES THE DETAIL LOCATION ON THE PAGE.
- MATCHLINE. SEE PAGE NUMBER NOTED FOR ENLARGED PLAN
- WALL TAG, NUMBER INDICATES ASSEMBLY DETAIL ON SHEET A-601
- DOOR TAG, SEE SHEET A-801 FOR DETAILS
- GLAZING TAG, SEE SHEET A-801 FOR DETAILS



1 FLOOR 1 - EXTERIOR IMPROVEMENTS
1/8" = 1'-0"



**SPOON AUTOMOTIVE BUILDING
EXTERIOR IMPROVEMENTS**
 118 CHERRY ST | OLYMPIA, WA

Project No: 1715
PERMIT SET
 MAY 4, 2018

PLAN - FLOOR 1

A-201

All material herein constitutes the original and unpublished work of the architect and may not be used, duplicated, or disclosed without the written consent of the architect. Copyright © 2018 by Thomas Architecture Studio. All rights reserved.