

UNIVERSITY OFFICE PLAZA

Gordon Winegar

302.283.1800
gwinegar@dsmre.com

Ryan Bree

302.283.1800
rbree@dsmre.com

256 - 263 CHAPMAN ROAD, NEWARK, DE 19702

OFFICE SUITES FOR LEASE



DSM
COMMERCIAL

3304 OLD CAPITOL TRAIL \ WILMINGTON, DE 19808 \ 302.283.1800 \ DSMRE.COM

UNIVERSITY OFFICE PLAZA

Welcome to University Office Plaza, a dynamic six-building office park spanning 185,000 square feet. With dedicated onsite management and maintenance, it offers convenience and reliability. Nestled at the heart of New Castle County, at the bustling I-95/Route 273 interchange, this campus is strategically positioned for success. Boasting a diverse tenant roster, including entities like The State of Delaware, Mosaic, International Literacy Association, and Delaware Sleep, alongside a range of financial, healthcare, non-profit, medical, and technology firms, it's a hub of innovation and collaboration.

PROPERTY DETAILS

- **Available Suites**
- **OXFORD BUILDING | 256 Chapman**
 - > **Suite 100:** 2,400 RSF
 - > **Suite 105:** 1,985 RSF
- **CHOPIN BUILDING | 258 Chapman**
 - > **Suite 204:** 5,300 RSF
- **COMMONWEALTH BUILDING | 260 Chapman**
 - > **Suite 205:** 2,273 RSF
 - > **Suite 205b:** 1,120 RSF
- **Suites can be combined for 3,393 RSF**
- **STOCKTON BUILDING | 261 Chapman**
 - > **Suite 105:** 1,801 RSF
- **BELLEVUE BUILDING | 262 Chapman**
 - > **Suite 100:** 2,000 RSF

ADDITIONAL INFORMATION

- **Lease Rate:** \$19.50/SF/Full Service
- **Parking:** 753 parking spaces (4.1/1,000)



For More Information, Contact:

Gordon Winegar
gwinegar@dsmre.com
302.283.1800 Office
302.757.5353 Cell

Ryan Bree
rbree@dsmre.com
302.283.1800 Office
302.668.5430 Cell

DSM Commercial
Real Estate Services
3304 Old Capitol Trail
Wilmington, DE 19808
dsmre.com



AMENITIES



ON-SITE MANAGEMENT



ABUNDANCE OF PARKING



CONFERENCE FACILITIES



SEASONAL TENANT EVENTS



RENOVATED COMMON AREAS



NEW OUTDOOR LIGHTING & LANDSCAPING



PARK-LIKE SETTING



EASY ACCESS TO SHOPPING & HIGHWAYS



EASY ACCESS TO PUBLIC TRANSPORTATION



COMMUNITY-LIKE ATMOSPHERE



TRASH REMOVAL AND SUITE CLEANING



CUSTOMIZABLE SPACES



ELECTRICITY INCLUDED IN RENT

For More Information, Contact:

Gordon Winegar
gwinegar@dsmre.com
302.283.1800 Office
302.757.5353 Cell

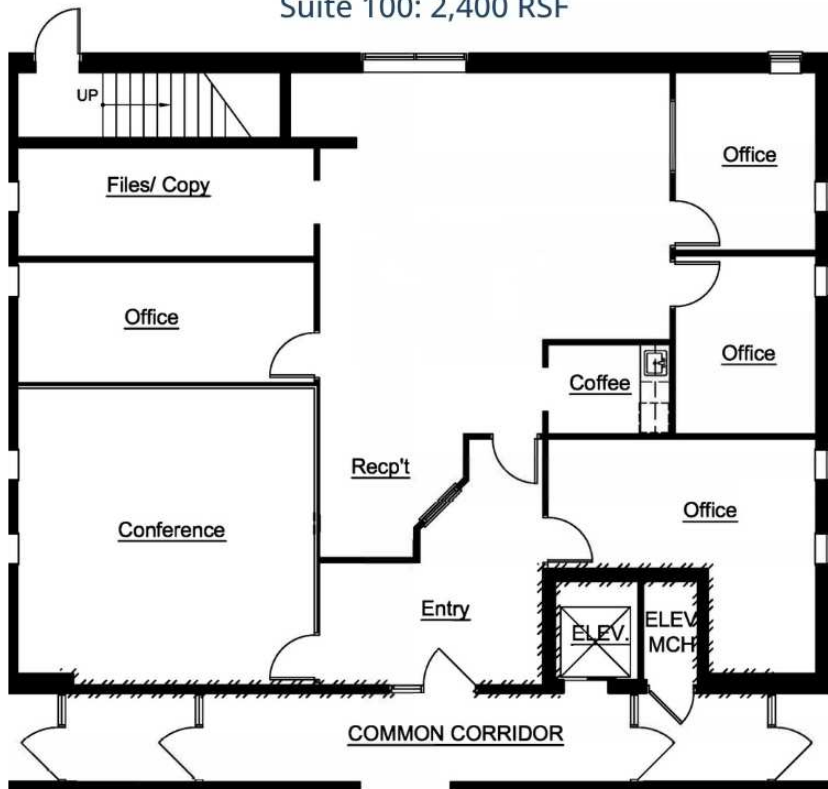
Ryan Bree
rbree@dsmre.com
302.283.1800 Office
302.668.5430 Cell

DSM Commercial
Real Estate Services
3304 Old Capitol Trail
Wilmington, DE 19808
dsmre.com



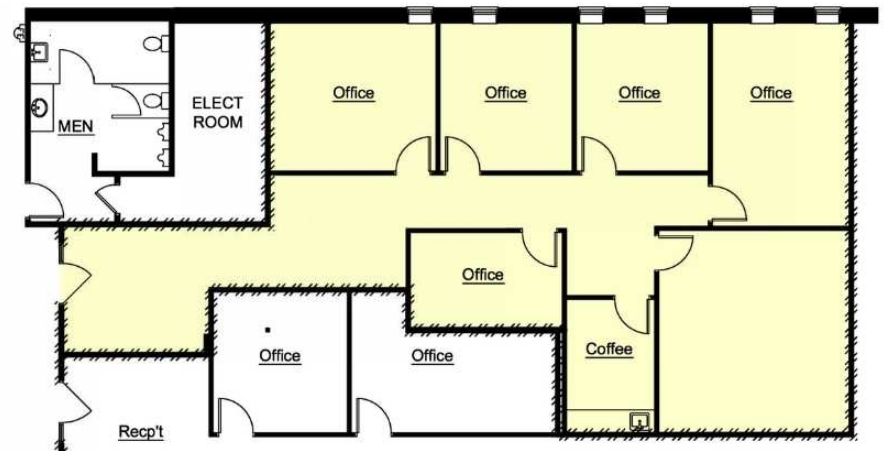
256 CHAPMAN | OXFORD BUILDING

Suite 100: 2,400 RSF



Suite 105: 1,985 RSF

PENDING



For More Information, Contact:

Gordon Winegar
gwinegar@dsmre.com
302.283.1800 Office
302.757.5353 Cell

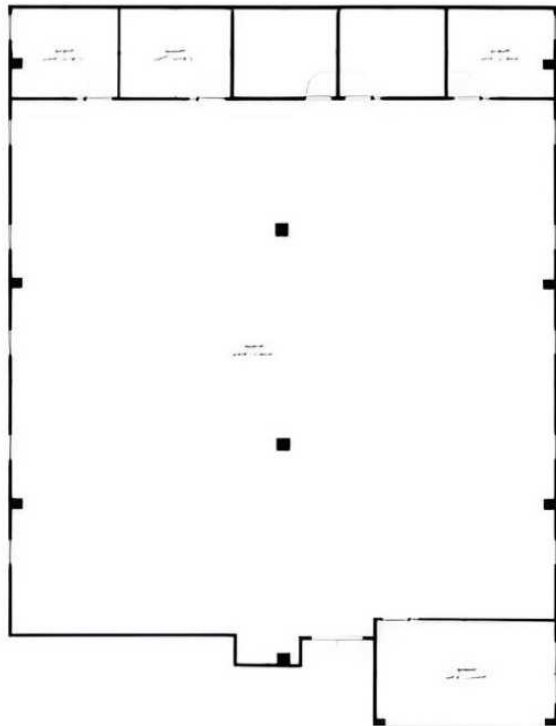
Ryan Bree
rbree@dsmre.com
302.283.1800 Office
302.668.5430 Cell

DSM Commercial
Real Estate Services
3304 Old Capitol Trail
Wilmington, DE 19808
dsmre.com



258 CHAPMAN | CHOPIN BUILDING

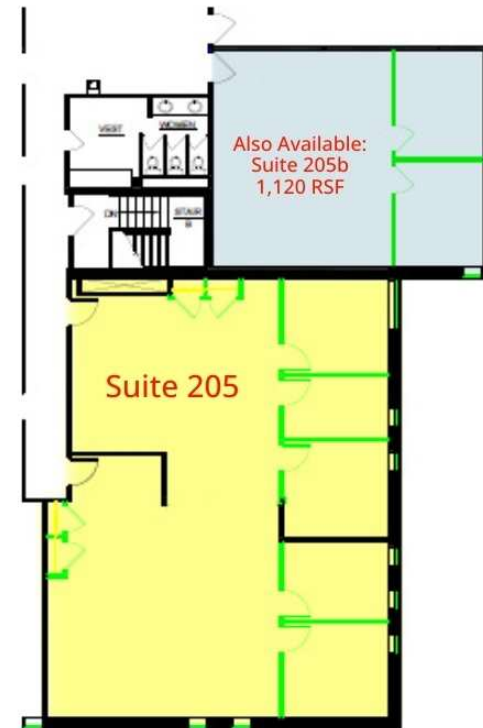
Suite 204: 5,300 RSF



260 CHAPMAN | COMMONWEALTH BUILDING

Suite 205: 2,273 RSF

Suites can be combined for 3,393 RSF



For More Information, Contact:

Gordon Winegar
gwinegar@dsmre.com
302.283.1800 Office
302.757.5353 Cell

Ryan Bree
rbree@dsmre.com
302.283.1800 Office
302.668.5430 Cell

DSM Commercial
Real Estate Services
3304 Old Capitol Trail
Wilmington, DE 19808
dsmre.com

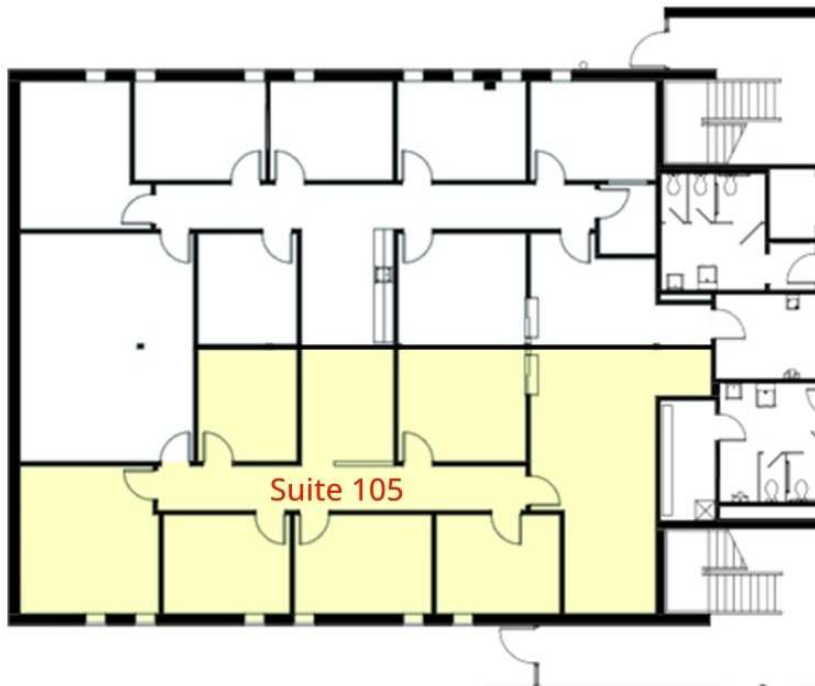


261 CHAPMAN | STOCKTON BUILDING

Suite 105: 1,801 RSF

262 CHAPMAN | BELLEVUE BUILDING

Suite 100: 2,000 RSF

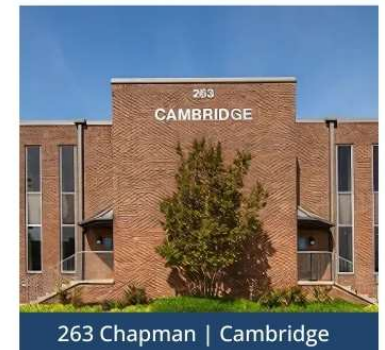
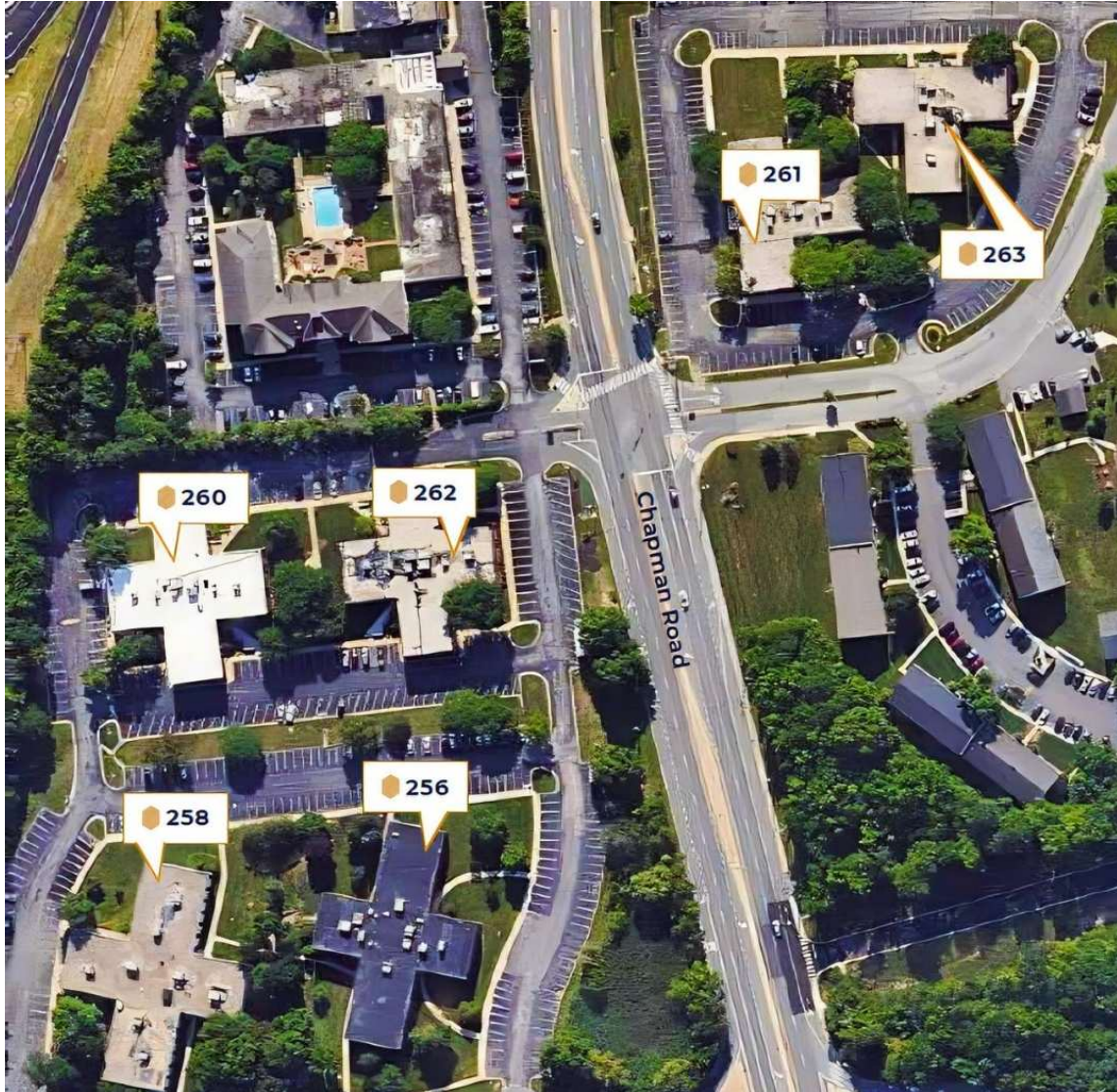


For More Information, Contact:

Gordon Winegar
gwinegar@dsmre.com
302.283.1800 Office
302.757.5353 Cell

Ryan Bree
rbree@dsmre.com
302.283.1800 Office
302.668.5430 Cell

DSM Commercial
Real Estate Services
3304 Old Capitol Trail
Wilmington, DE 19808
dsmre.com



For More Information, Contact:

Gordon Winegar
gwinegar@dsmre.com
302.283.1800 Office
302.757.5353 Cell

Ryan Bree
rbree@dsmre.com
302.283.1800 Office
302.668.5430 Cell

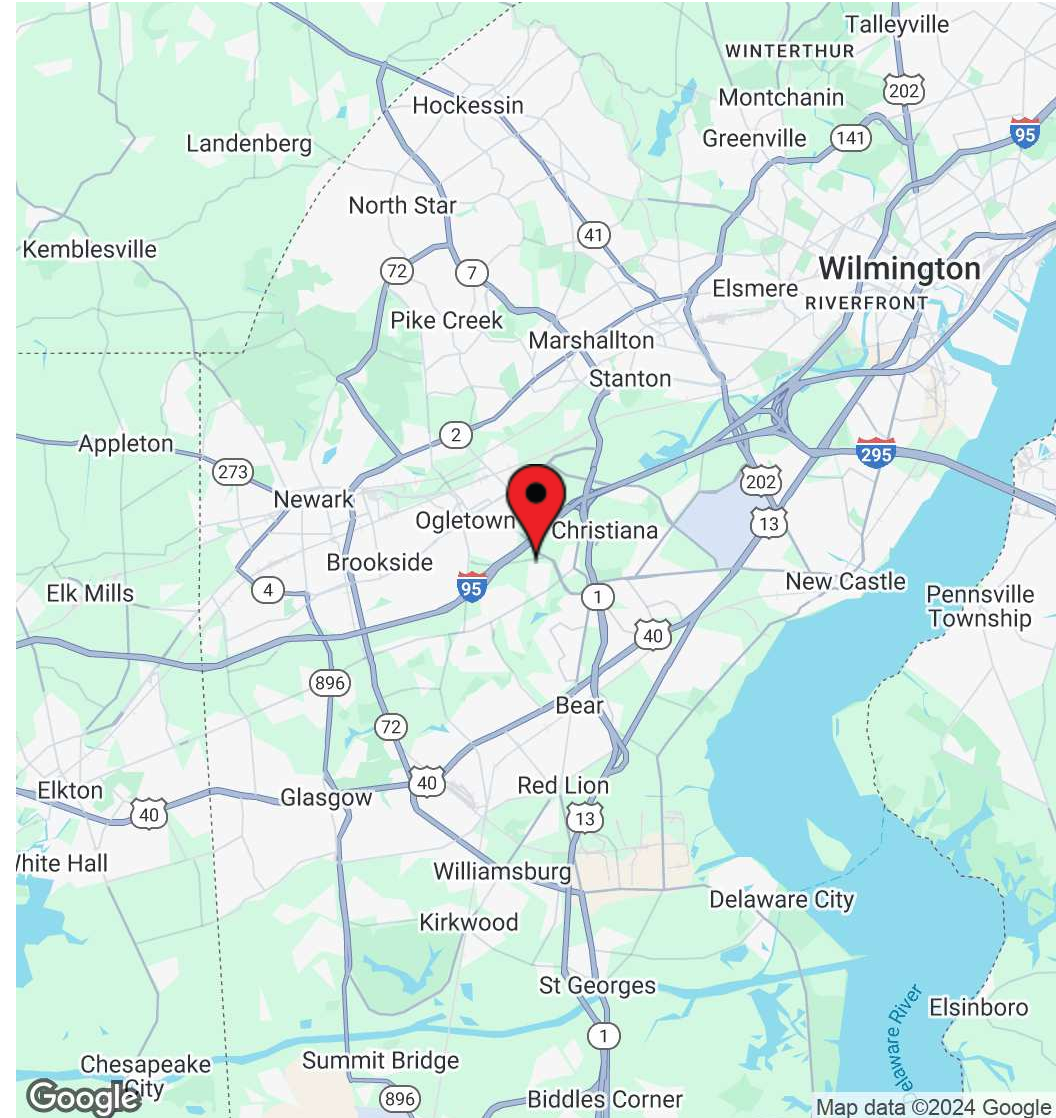
DSM Commercial
Real Estate Services
3304 Old Capitol Trail
Wilmington, DE 19808
dsmre.com



UNIVERSITY OFFICE PLAZA

256 - 263 Chapman Road
Newark, DE 19702

OFFICE SUITES FOR LEASE



For More Information, Contact:

Gordon Winegar
gwinegar@dsmre.com
302.283.1800 Office
302.757.5353 Cell

Ryan Bree
rbree@dsmre.com
302.283.1800 Office
302.668.5430 Cell

DSM Commercial
Real Estate Services
3304 Old Capitol Trail
Wilmington, DE 19808
dsmre.com