

FOR LEASE
\$20.00/SF Gross

Flex Warehouse Units | 532-534 NW Mercantile Place, Port St. Lucie, FL 34986



east
capital partners

Presented By:

NAI Southcoast

Douglas Legler

Principal | Broker Associate

+1 772 405 7778

douglas@naisouthcoast.com

Casey Combs

Broker Associate

+1 772 285 8769

ccombs@naisouthcoast.com



NAI Southcoast | 100 SW Albany Avenue, 2nd Floor, Stuart, FL 34994 | O: 772.286.6292 | naisouthcoast.com

Property Details

Address:	532-534 NW Mercantile Place Port Saint Lucie, FL 34986
Lease Price:	\$20.00/SF Gross
Available Space:	Building 532 Unit 112 - 2,020 SF Building 534 Unit 112 - 1,344 SF Unit 113 - 1,344 SF Unit 115 - 1,344 SF Unit 116 - 1,344 SF
Zoning:	Warehouse Industrial
Municipality:	Port St. Lucie
Ceiling Height:	18' Clear
Roll-Up Doors:	12'x12'
Fire Suppression:	100% Sprinklered

Property Overview

532-534 NW Mercantile Place in Port St. Lucie consists of flex warehouse buildings with office space and overhead roll-up doors well-suited for a range of warehouse or light industrial uses. The site provides ingress and egress from both NW Enterprise Drive and NW Mercantile Place, enhancing accessibility and traffic circulation.

Conveniently located 2 miles from I-95, the site offers strong regional connectivity for distribution, operations, or service-based businesses. The layout and location provide an ideal solution for tenants seeking a balance of customer-facing office or showroom space with ample warehousing space, all within minutes of major transportation routes.







BUILDING 534
1,344 - 2,688 SF





St. Lucie West Commercial Association, Inc.

INTERSTATE
95

cloverpark

FedEx

NW PEACOCK BLVD

NAI

NW MERCANTILE PL

WGI

Lindstrom
Air Conditioning & Plumbing

FLEX WAREHOUSE UNITS



LOOKING NORTH



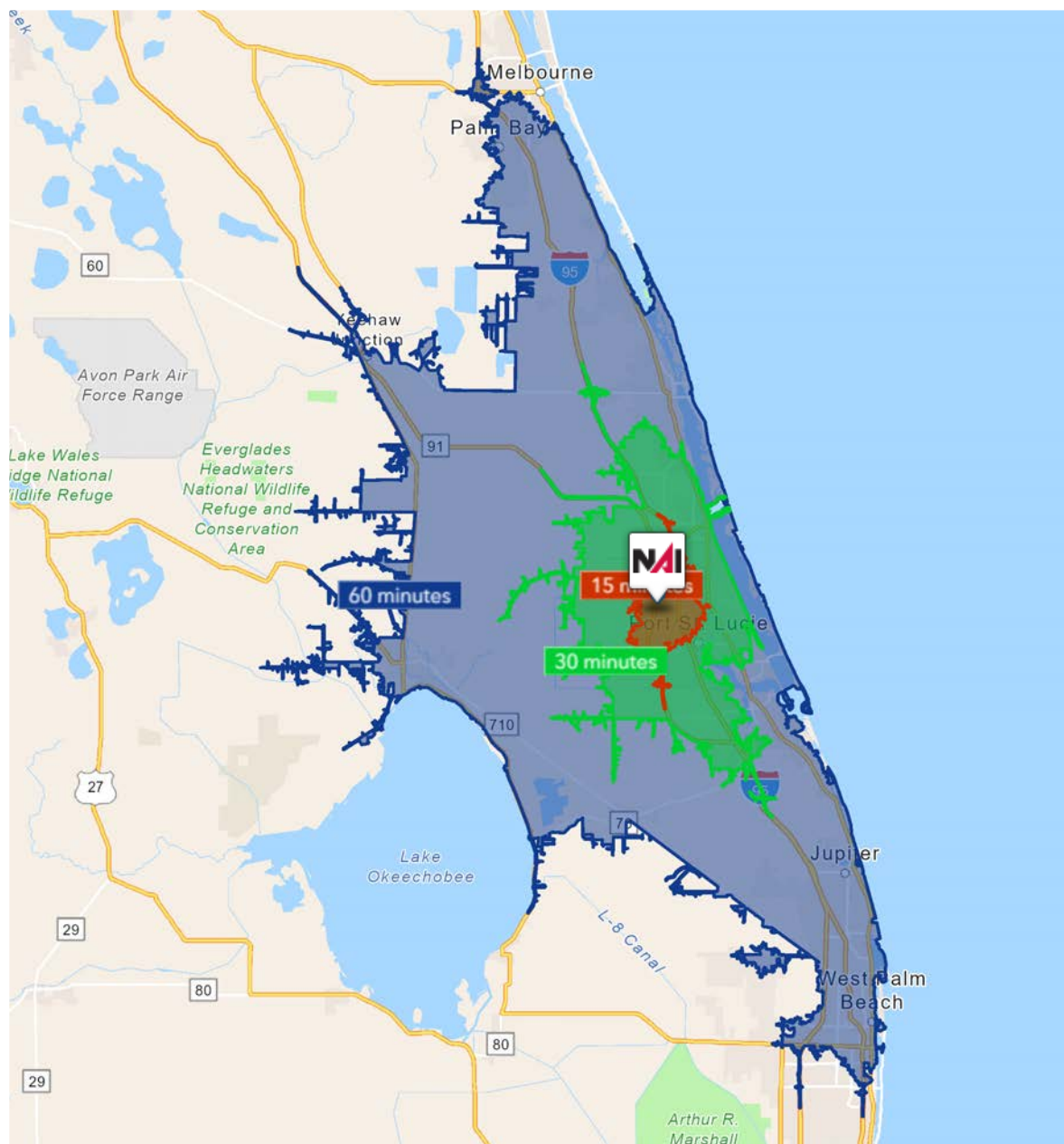
NW MERCANTILE PL

NW ENTERPRISE DR



REAR BUILDING
ACCESS





15 Minutes

74,687
2010 Population

107,937
2025 Population

44.52%
2010-2025
Population Growth

2.56%
2025-2030 (Annual)
Est. Population Growth

46.9
2025 Median Age

\$102,259
Average Household
Income

43.0%
Percentage with
Associates Degree
or Better

61.3%
Percentage in White
Collar Profession

30 Minutes

298,819
2010 Population

402,681
2025 Population

34.76%
2010-2025
Population Growth

2.32%
2025-2030 (Annual)
Est. Population Growth

45.7
2025 Median Age

\$98,204
Average Household
Income

40.8%
Percentage with
Associates Degree
or Better

57.8%
Percentage in White
Collar Profession

60 Minutes

1,115,893
2010 Population

1,375,501
2025 Population

23.26%
2010-2025
Population Growth

1.34%
2025-2030 (Annual)
Est. Population Growth

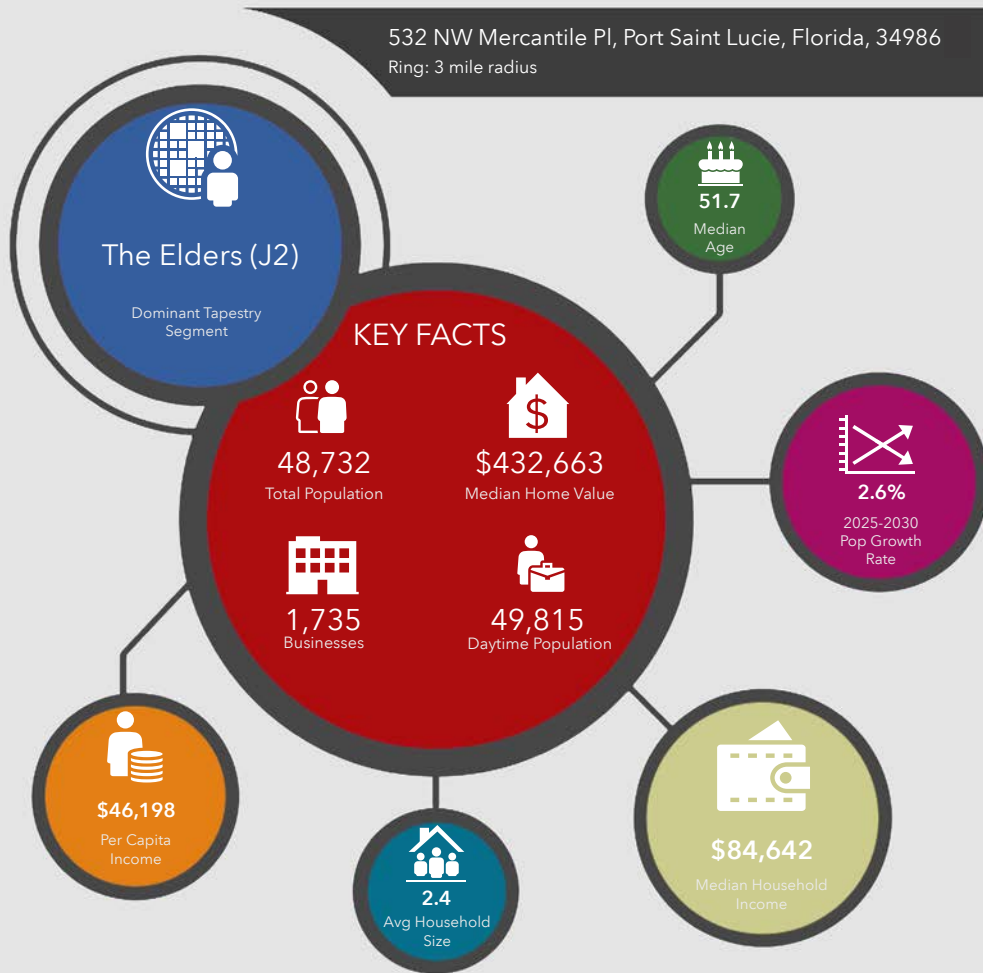
47.5
2025 Median Age

\$117,206
Average Household
Income

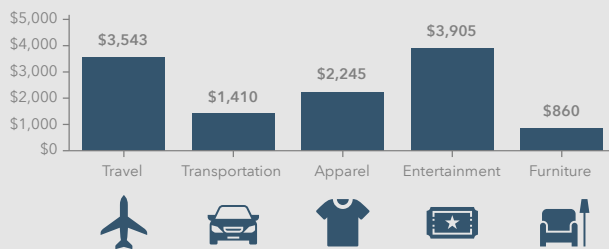
46.5%
Percentage with
Associates Degree
or Better

60.3%
Percentage in White
Collar Profession

532 NW Mercantile Pl, Port Saint Lucie, Florida, 34986
Ring: 3 mile radius



KEY SPENDING FACTS



NAISouthcoast
COMMERCIAL REAL ESTATE SERVICES WORLDWIDE

Source: This infographic contains data provided by Esri (2025, 2030), Esri-Data Axle (2025), Esri-U.S. BLS (2025).

© 2025 Esri

Spending facts are average annual dollars per household

Population

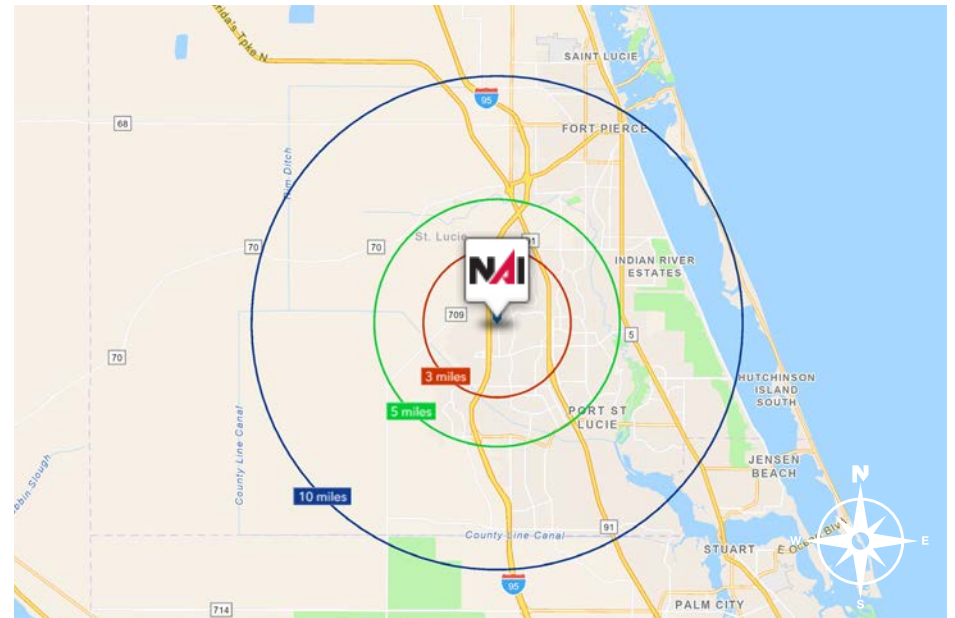
3 Miles:	48,732
5 Miles:	125,280
10 Miles:	338,050

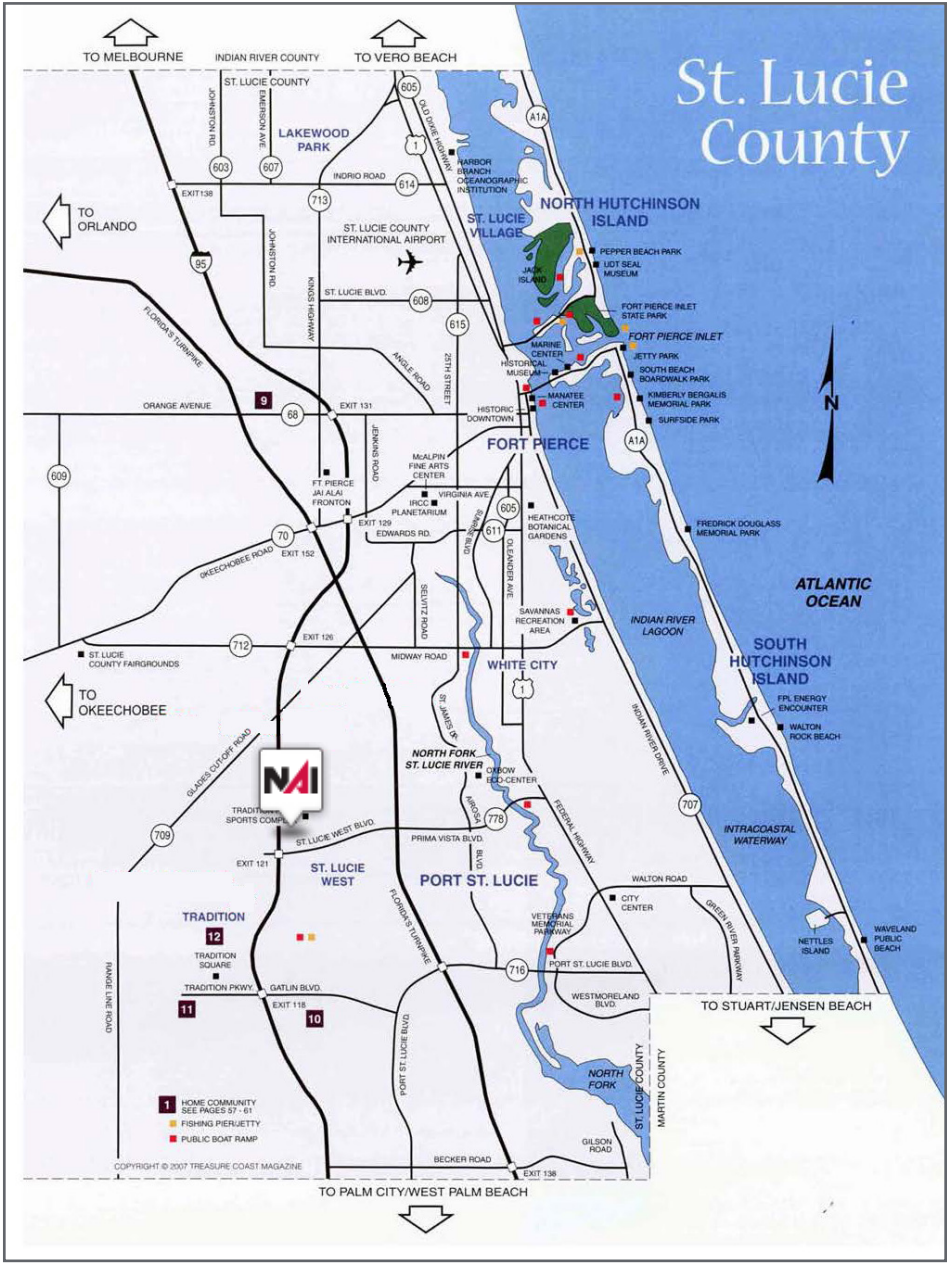
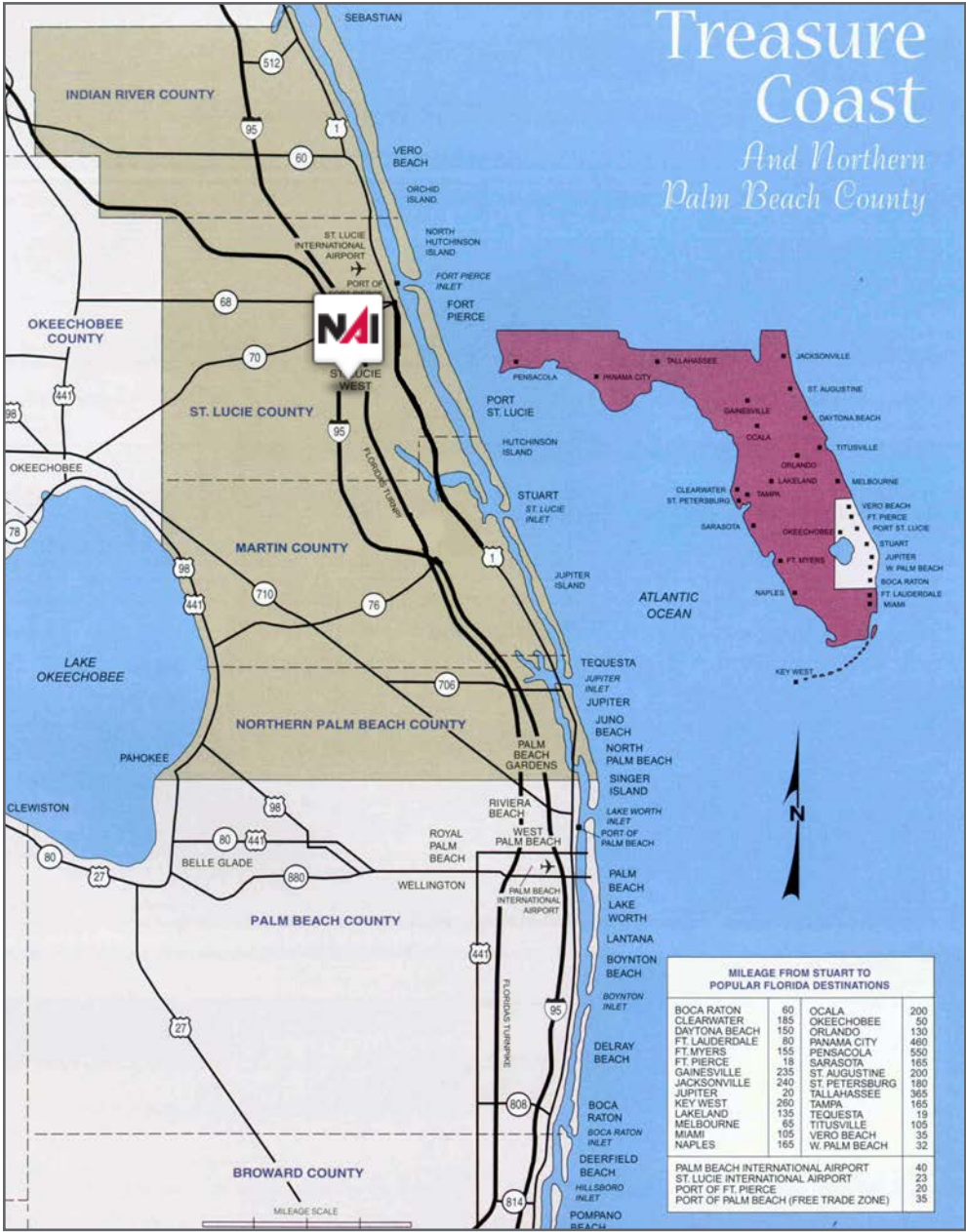
Average Household Income

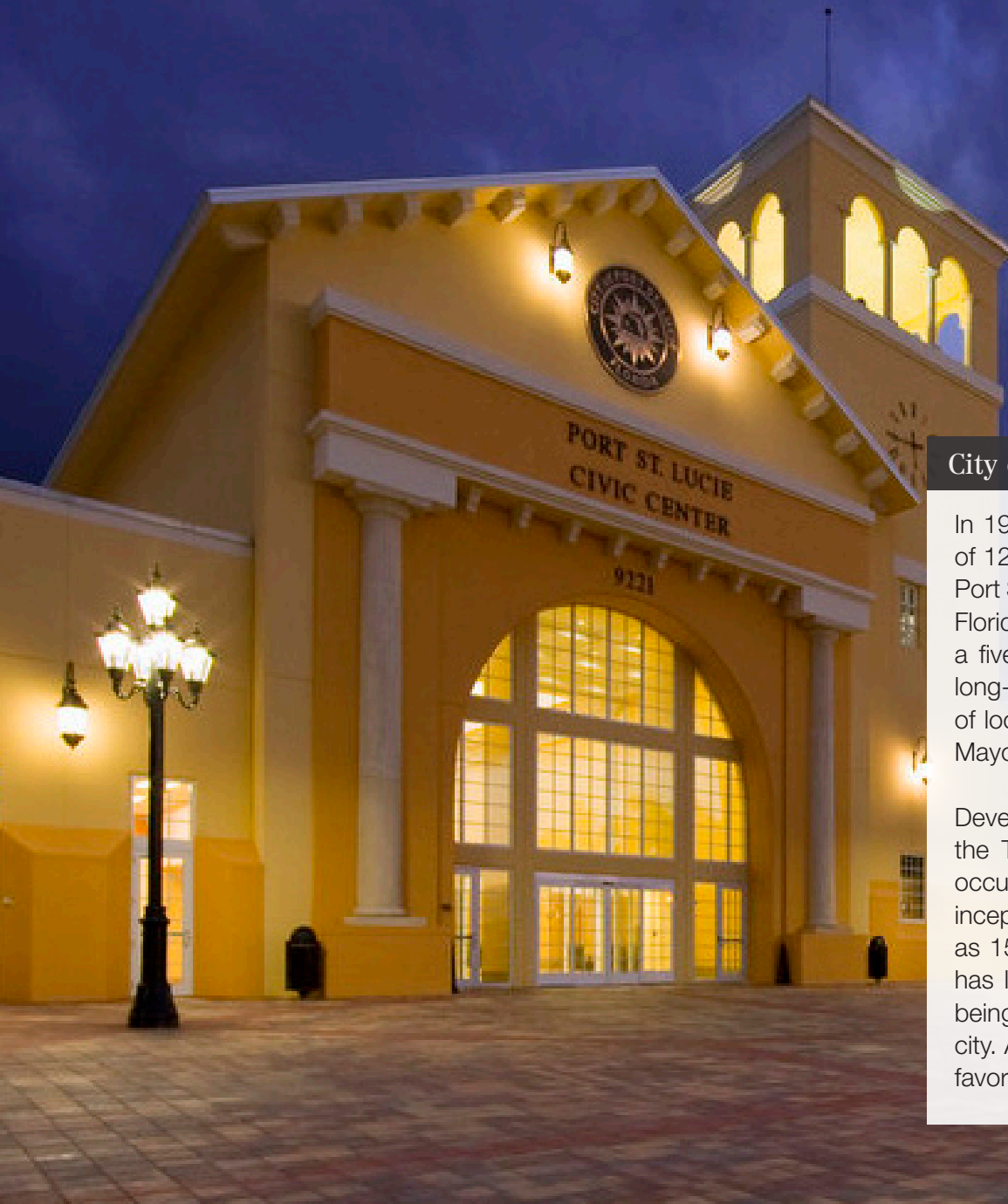
3 Miles:	\$110,345
5 Miles:	\$102,642
10 Miles:	\$96,408

Median Age

3 Miles:	51.7
5 Miles:	46.3
10 Miles:	45.1







City of Port St Lucie, Florida

In 1961, Port Saint Lucie was incorporated as a city. Today, consisting of 120 square miles with a population of more than 230,000, the City of Port St. Lucie is the 7th largest City in Florida, the 3rd largest City in South Florida, and the 112th largest City in the United States. The city is led by a five-member elected Council, which sets policy and determines the long-term vision for the city. This system is called a Council-Manager form of local government. Each Council member has one vote, including the Mayor, so legislative authority is equally spread among all five members.

Development within the City has been primarily west of I-95 within the Tradition Development; however, there is much infill development occurring in the General Development platted areas of the city. At its inception, Port St. Lucie was platted by General Development company as 15,000 acres of 80x120 single family lots. The development pattern has largely held true to this plat, with utilities, public works and roads being expanded over the decades to accommodate the growth of the city. As a pro-growth municipality, Port St. Lucie is generally viewed as a favorable environment to do business.

St. Lucie County, Florida

Extensive, dependable transportation and easy access is the key to growth, and St. Lucie County has both in abundance. Interstate Highway 95 and U.S. Highway 1 provide easy access to the country's east coast, from Key West to Maine. The Florida Turnpike stretches from just south of Miami through northern-central Florida, while State Road 70 runs from U.S. Highway 1 in Fort Pierce west to Bradenton, Florida. St. Lucie County offers a plethora of transportation linkages which include rail, a custom-serviced international airport, and a deep-water port – all of which enable easy access to all St. Lucie County has to offer. The St. Lucie County International Airport is also one of the busiest general aviation airports in the state.

The county has a population of over 375,226 and has experienced growth of over 35% since 2010. The area economy is a blend of emerging life science R&D with traditional manufacturing, agriculture, tourism and services. St. Lucie County's natural resources are enviable, with more than 21 miles of pristine coastline and beaches, coral reefs, more than 20,000 acres of public parks and nature preserves, and miles of rivers and waterways. The area boasts over 20 public and semiprivate courses, with prices ranging from upscale to very affordable, and the great weather allows for play all year round. St. Lucie County is home to Clover Park in Port St. Lucie, the Spring training home of the New York Mets.

The county is host to Indian River State College, an institution that has won national recognition for excellence and innovation applied toward training and education. St. Lucie County boasts 52 schools with a total of 45,661 students and 8,800 staff. The Economic Development Council of St. Lucie County (EDC) is a non-profit organization with the goal of creating more, high-paying jobs for residents by working in concert on agreed upon strategies to promote the retention and expansion of existing businesses, as well as attracting new ones to St. Lucie County. Workers employed in St. Lucie County are clustered in the Health Care and Social Assistance (18.4%), and Retail Trade (11.9%) industries. Workers living in St. Lucie County are concentrated in the Health Care and Social Assistance (16.3%), and Retail Trade (14.1%) industries. Since 2017 the EDC has facilitated 40 expansion and new attraction job creating projects with a net growth of building area of approximately 6,500,000 square feet.





Flex Warehouse Units

532-534 NW Mercantile Place, Port St. Lucie, FL 34986



Douglas Legler
Principal | Broker Associate
+1 772 405 7778
douglas@naisouthcoast.com



Casey Combs
Broker Associate
+1 772 285 8769
ccombs@naisouthcoast.com

FOR LEASE:
\$20.00/SF Gross

