

28825 GODDARD ROAD
ROMULUS, MICHIGAN



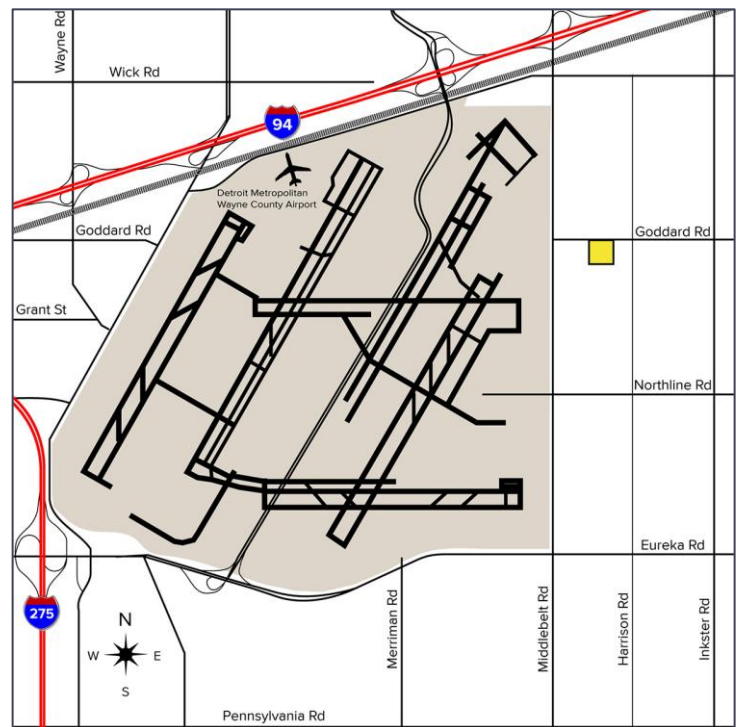
**SIGNATURE
ASSOCIATES**
KNOW SIGNATURE | KNOW RESULTS

INDUSTRIAL FOR SUBLEASE
20,800 Square Feet Available



PROPERTY FEATURES

- 20,800 square feet available
- 1,250 square feet office
- 20' clear height
- (4) 12' x 14' grade level doors
- (4) truckwells
- Located minutes away from DTW airport and I-94
- Available for sublease through October 2027, longer term lease possible
- Lease Rate: \$7.00/sq. ft. Gross



For more information, please contact:

BRAD VIERGEVER
(248) 799 3146
bviergever@signatureassociates.com

ALEX TIMMIS
(248) 359 0623
atimmis@signatureassociates.com

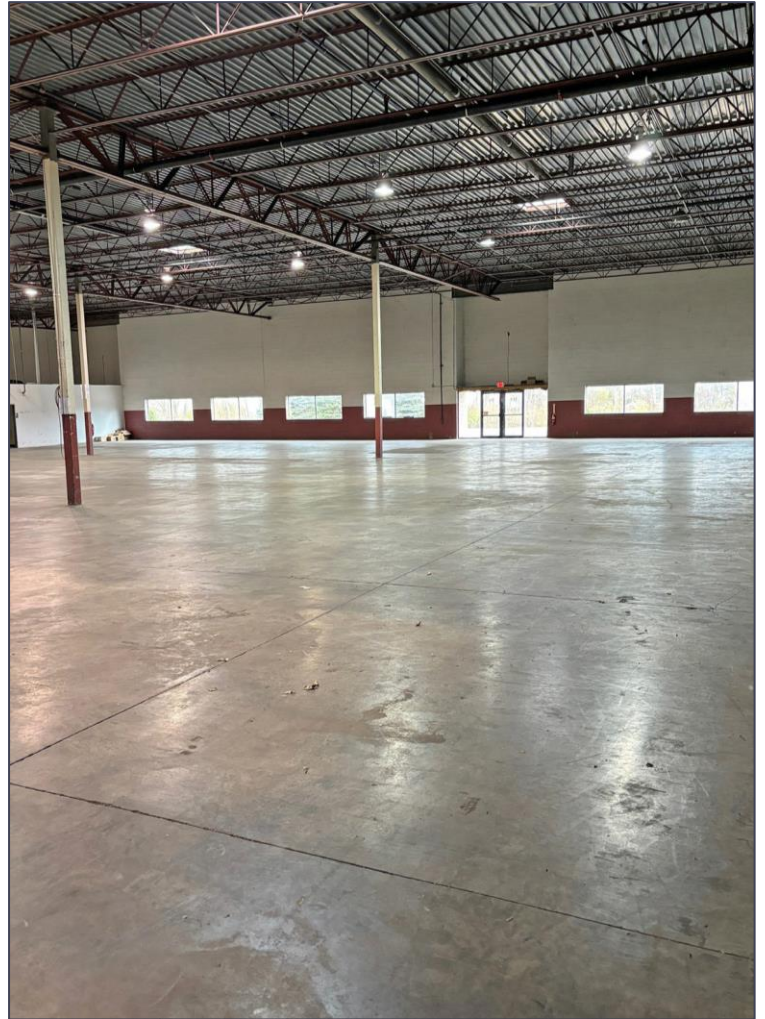
SIGNATURE ASSOCIATES
One Towne Square, Suite 1200
Southfield, MI 48076
www.signatureassociates.com

28825 Goddard Road – Romulus, Michigan

Industrial For Sublease

20,800
Square Feet
AVAILABLE

Interior Photos



For more information, please contact:

BRAD VIERGEVER
(248) 799 3146
bviergever@signatureassociates.com

ALEX TIMMIS
(248) 359 0623
atimmis@signatureassociates.com

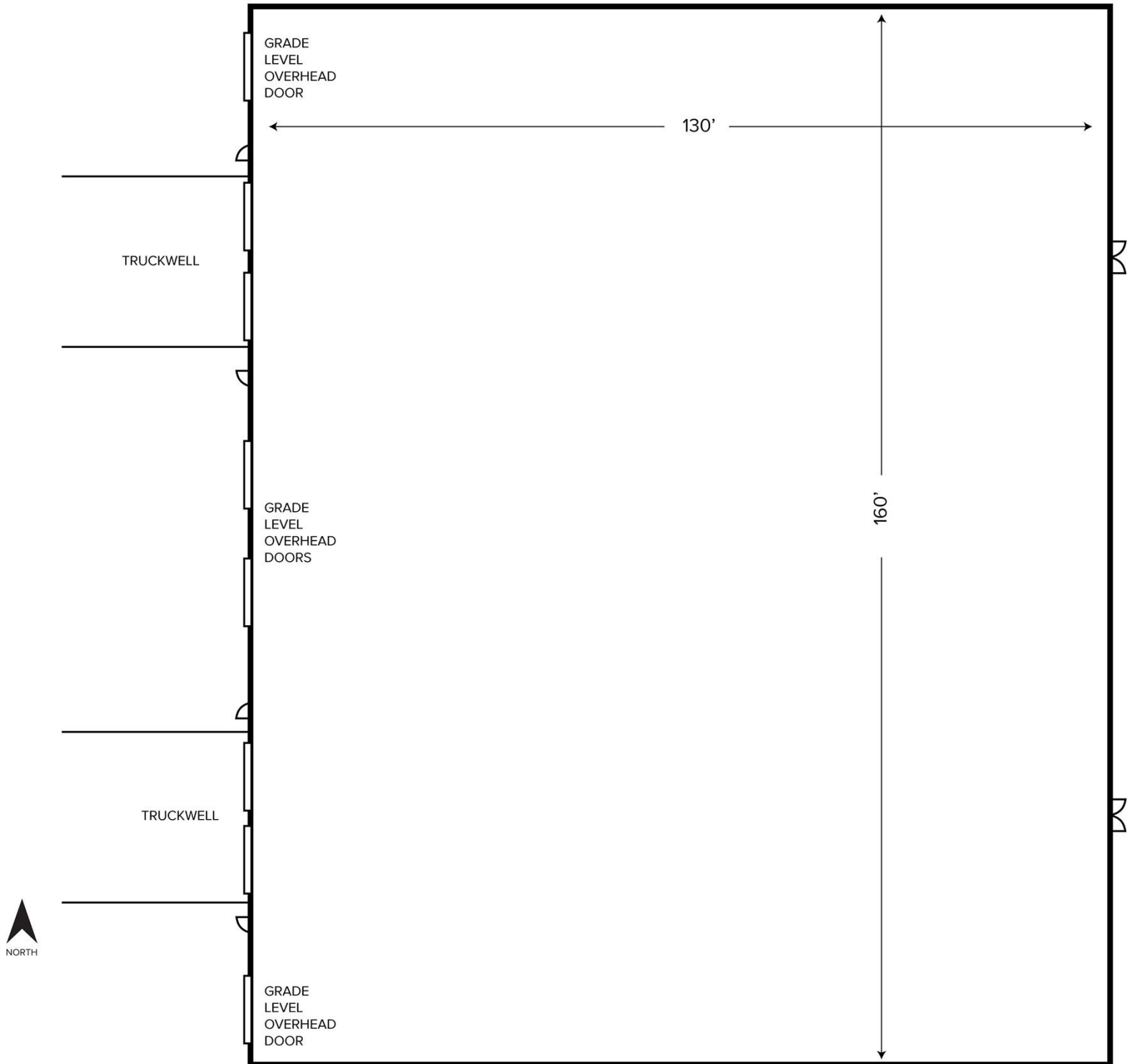
SIGNATURE ASSOCIATES
One Towne Square, Suite 1200
Southfield, MI 48076
www.signatureassociates.com

28825 Goddard Road – Romulus, Michigan

Industrial For Sublease

20,800
Square Feet
AVAILABLE

Shop Floor Plan



For more information, please contact:

BRAD VIERGEVER
(248) 799 3146
bviergever@signatureassociates.com

ALEX TIMMIS
(248) 359 0623
atimmis@signatureassociates.com

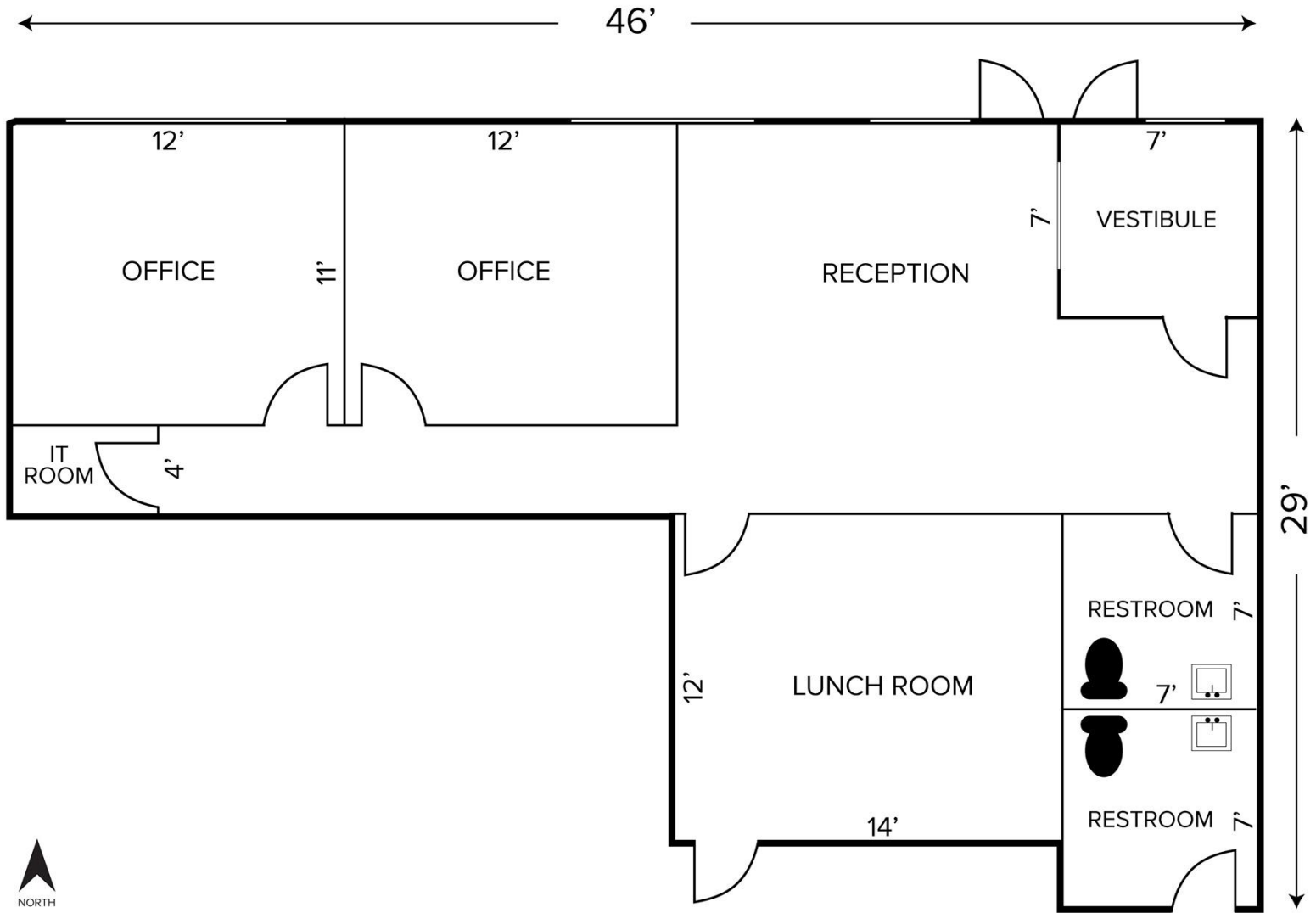
SIGNATURE ASSOCIATES
One Towne Square, Suite 1200
Southfield, MI 48076
www.signatureassociates.com

28825 Goddard Road – Romulus, Michigan

Industrial For Sublease

20,800
Square Feet
AVAILABLE

Office Floor Plan



For more information, please contact:

BRAD VIERGEVER
(248) 799 3146
bviergever@signatureassociates.com

ALEX TIMMIS
(248) 359 0623
atimmis@signatureassociates.com

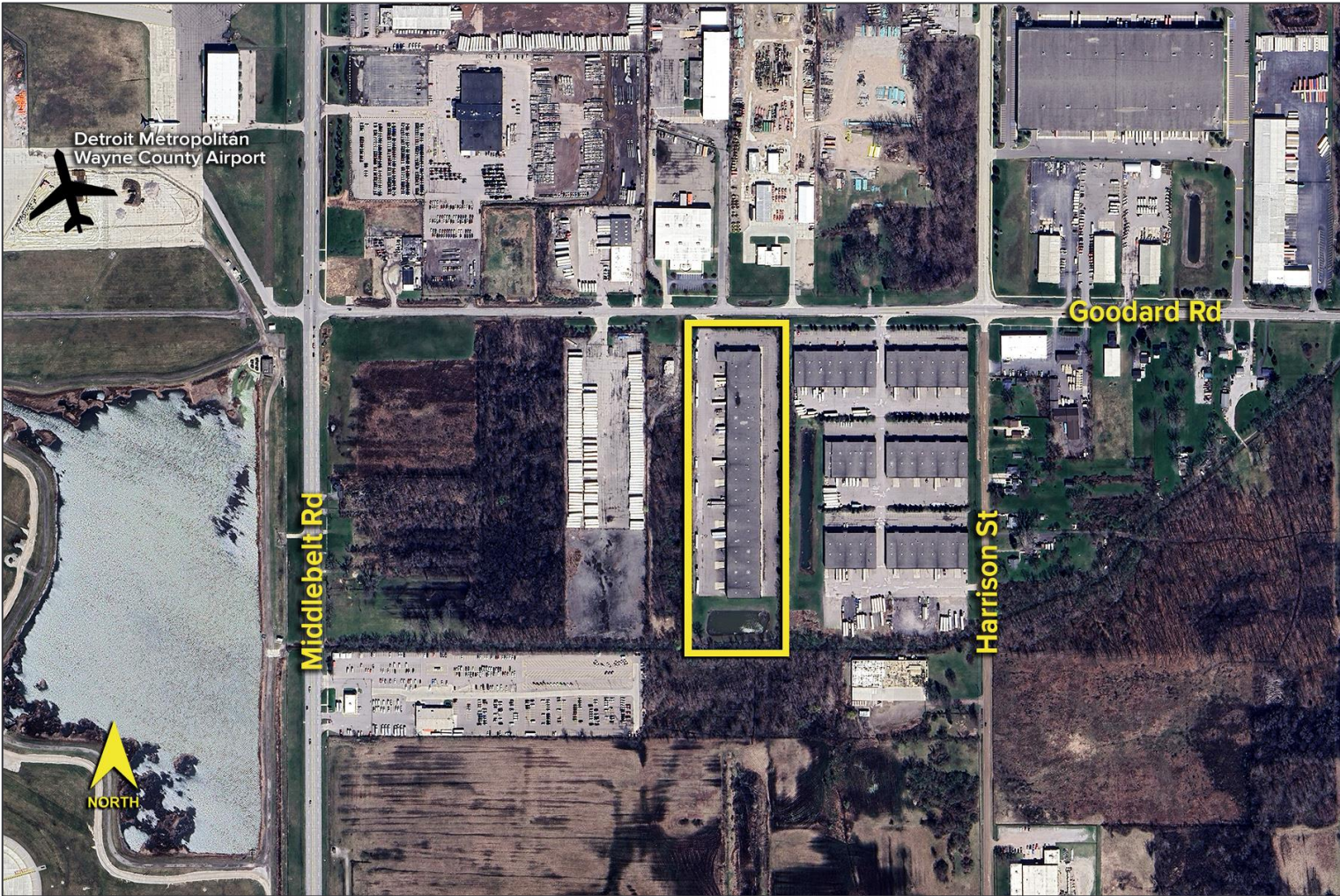
SIGNATURE ASSOCIATES
One Towne Square, Suite 1200
Southfield, MI 48076
www.signatureassociates.com

28825 Goddard Road – Romulus, Michigan

Industrial For Sublease

20,800
Square Feet
AVAILABLE

Aerial



For more information, please contact:

BRAD VIERGEVER
(248) 799 3146
bviergever@signatureassociates.com

ALEX TIMMIS
(248) 359 0623
atimmis@signatureassociates.com

SIGNATURE ASSOCIATES
One Towne Square, Suite 1200
Southfield, MI 48076
www.signatureassociates.com

Information is subject to verification and no liability for errors or omissions is assumed. Price is subject to change and listing withdrawal.