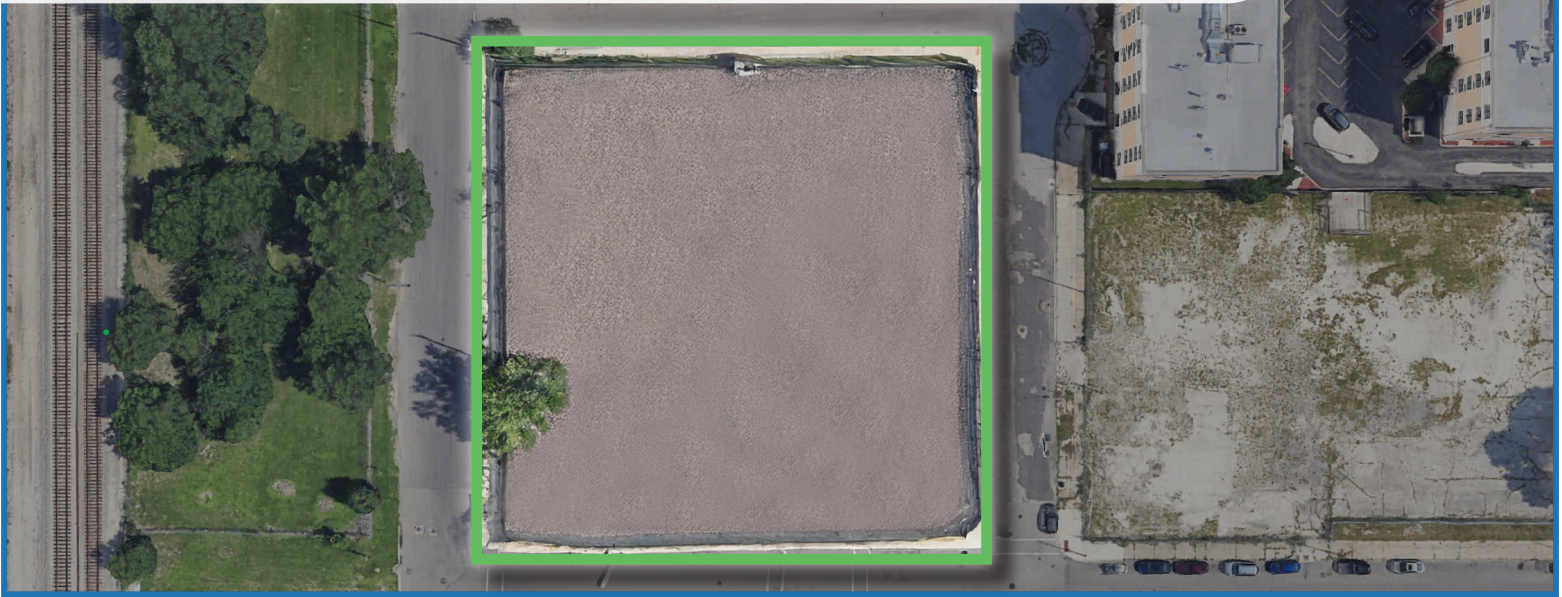


# FOR LEASE

## TRUCK & TRAILER DROP LOT

### 2620 S. DEARBORN STREET | CHICAGO, IL



**Total Land Area:** ± 1.2 Acres

**Zoning:** M1-3, County

**Alderman:** Pat Dowell | 3<sup>RD</sup> Ward

**PIN(s):**  
17-28-408-014-0000  
17-28-408-006-0000  
17-28-408-013-0000  
17-28-408-018-0000  
17-28-408-019-0000

**Lease Rate:** \$5,900 Per Month Gross



**Fenced & Secure Parking**



**Most Aggressively Priced Outside Storage Currently Available**



**Quick Access to Everything**



**Less Than 1 Mile from  
McCormick Place Convention Center**



**Less Than 1 Mile from I-55 Expressway**



**Less Than 1 Mile from I-90/94 Expressway**



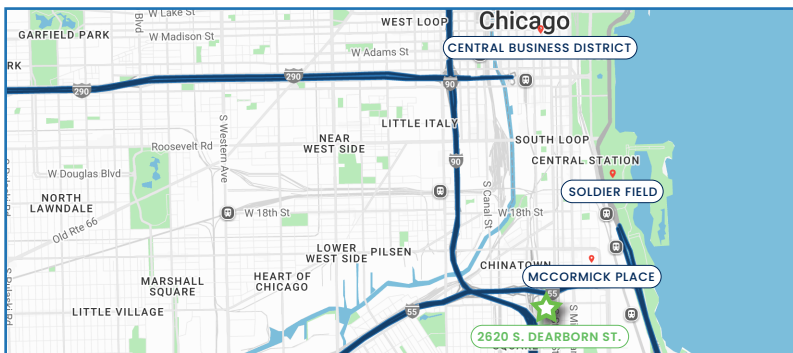
**2 Miles from  
Soldier Field & Museum Campus**



**3 Miles from  
Central Business District**



**4 Miles from I-290 Expressway**



**FRANK MELCHERT, SIOR**  
Principal  
(312) 766-4281  
frank@cawleycre.com

**STEVAN ARANDJELOVIC**  
Vice President  
(312) 766-4284  
stevan@cawleycre.com

**SIMON PORRAS**  
Associate  
(312) 702-1189  
simon@cawleycre.com