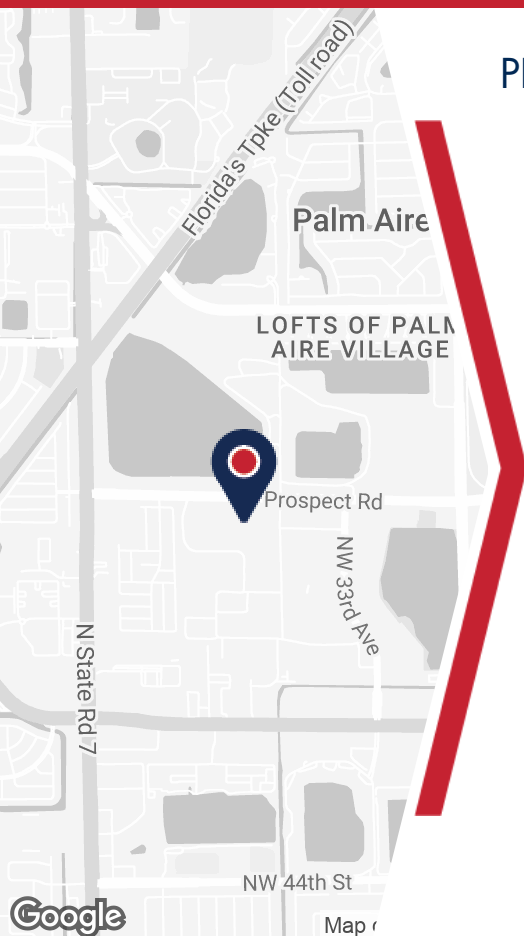


PALM CROSSING NORTH

3520-3560 NW 56TH STREET



PROPERTY DETAILS

- Bay 303
- Size: 7,883
- Est. 2025 CAM: \$7.40 PSF
- 1 dock high door
- 1 grade level door
- 18' clear ceiling height
- Ample parking
- Proximity to I-95 & FL Turnpike - centrally located with quick access to restaurants, hotels, banking, and the Fort Lauderdale Executive Airport (FXE)

ABOUT PROPERTY



PRICE

\$21.00 SF/yr (NNN)



YEAR BUILT

1986



AVAILABLE SF

7,883 SF



PARKING

Ample



LOCATION

Fort Lauderdale, FL

For more information:

Keith R. Graves, CCIM, SIOR

954.652.2031 | Kgraves@Bergercommercial.Com

bergercommercial.com

Daniel Forman

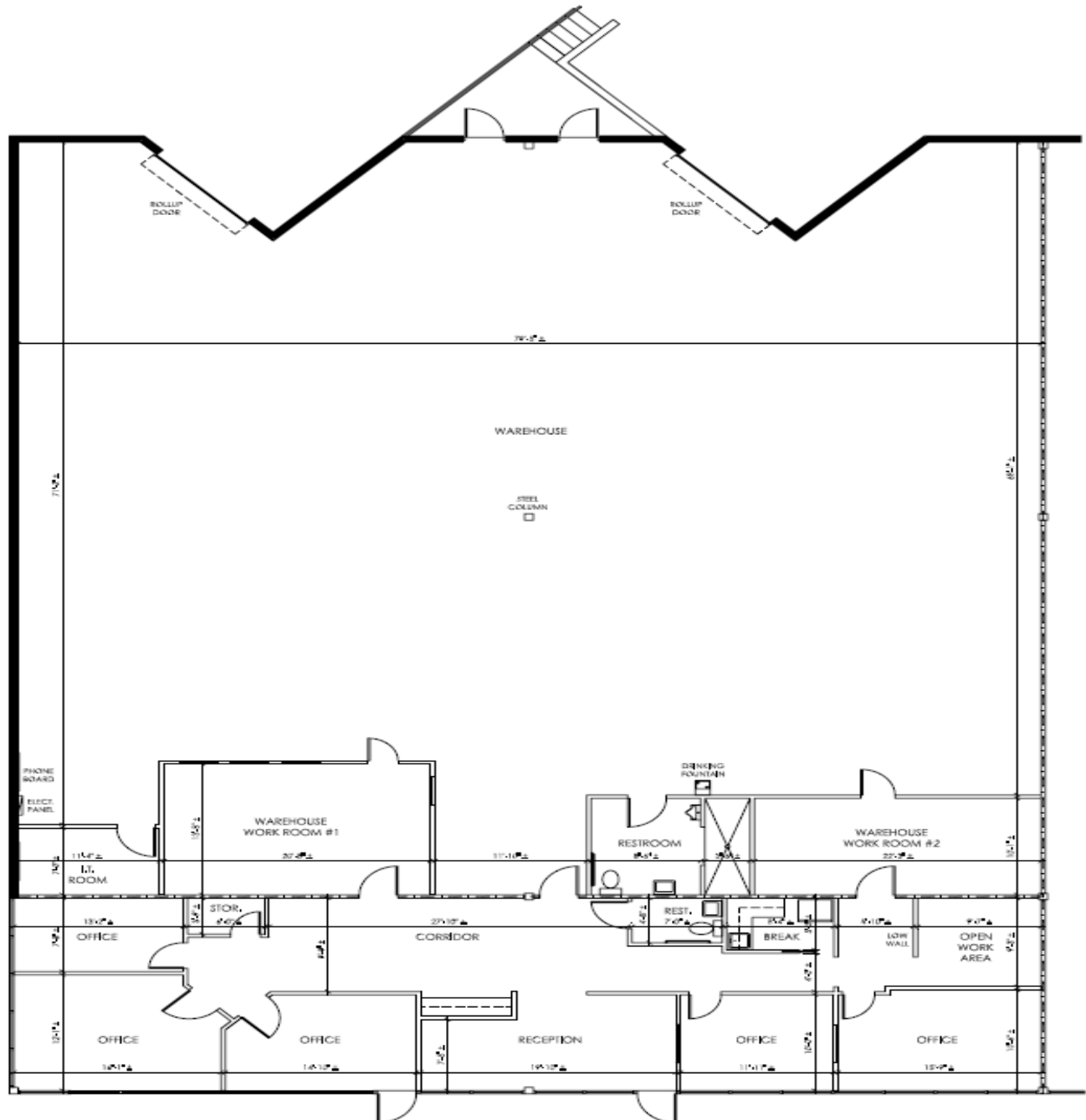
954.652.2004 | Dforman@Bergercommercial.Com

Jonathan Thiel

954.652.2020 | Jthiel@Bergercommercial.Com



Information furnished regarding this property is from sources deemed reliable, but no warranty or representation as to the accuracy thereof and it is submitted subject to errors, omissions, prior sale, lease or withdrawal without prior notice.



For more information:

Keith R. Graves, CCIM, SIOR

954.652.2031 | Kgraves@Bergercommercial.Com

bergercommercial.com

Daniel Forman

954.652.2004 | Dforman@Bergercommercial.Com

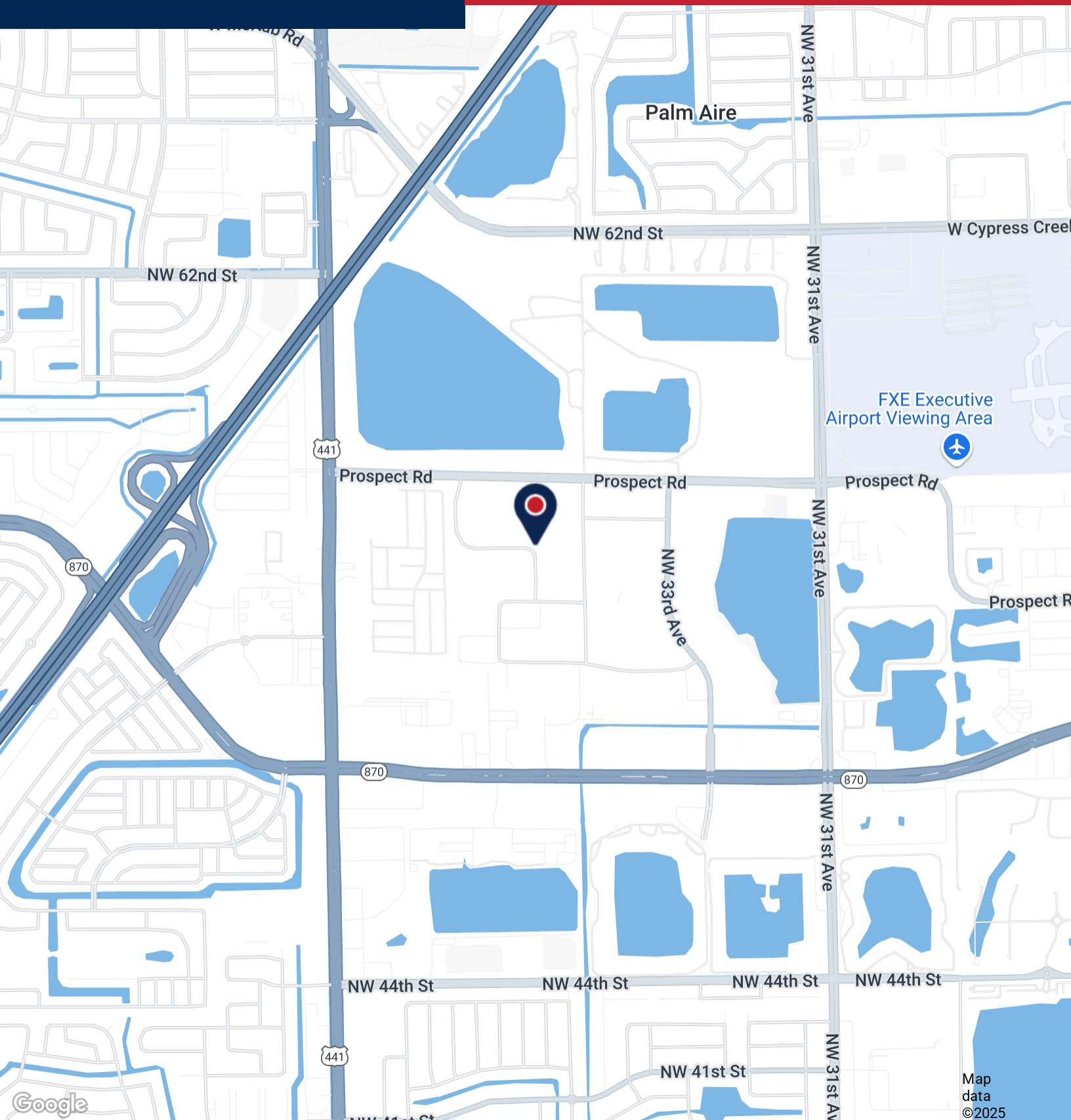
Jonathan Thiel

954.652.2020 | Jthiel@Bergercommercial.Com



PALM CROSSING NORTH

AERIAL MAP



For more information:

Keith R. Graves, CCIM, SIOR

954.652.2031 | Kgraves@Bergercommercial.Com

bergercommercial.com

Daniel Forman

954.652.2004 | Dforman@Bergercommercial.Com

Jonathan Thiel

954.652.2020 | Jthiel@Bergercommercial.Com



COMMERCIAL BROKERAGE AND PROPERTY MANAGEMENT

Information furnished regarding this property is from sources deemed reliable, but no warranty or representation as to the accuracy thereof and it is submitted subject to errors, omissions, prior sale, lease or withdrawal without prior notice.