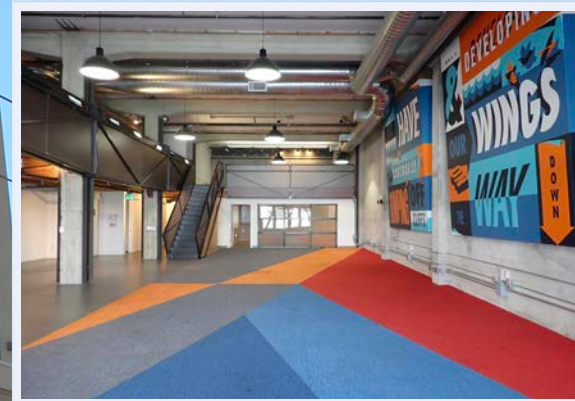


# 543 HOWARD ST

San Francisco, CA

± 4,600 RSF Ground Floor Space



Mario Previtali | Senior Vice President  
415.755.8905 | [mario@calcosf.com](mailto:mario@calcosf.com)  
LIC. 01902075

Charlie Cutler | Partner  
415.850.4935 | [charlie@calcosf.com](mailto:charlie@calcosf.com)  
LIC. 02026787

 **CALCO**  
COMMERCIAL, INC.



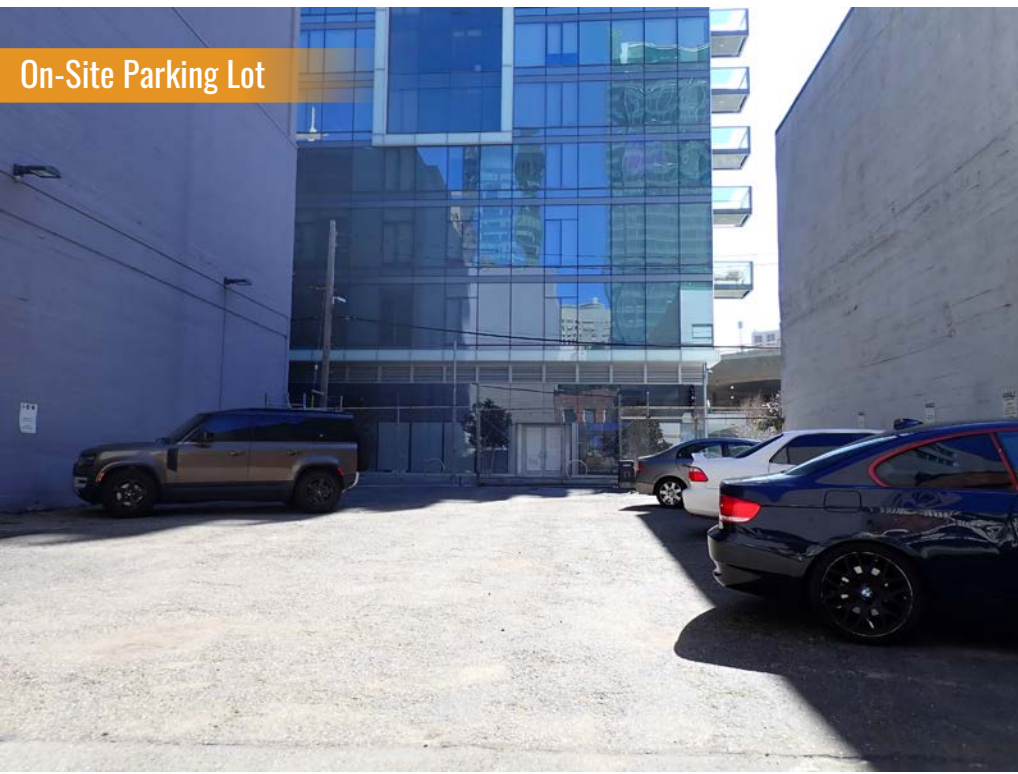


# 543 Howard ST

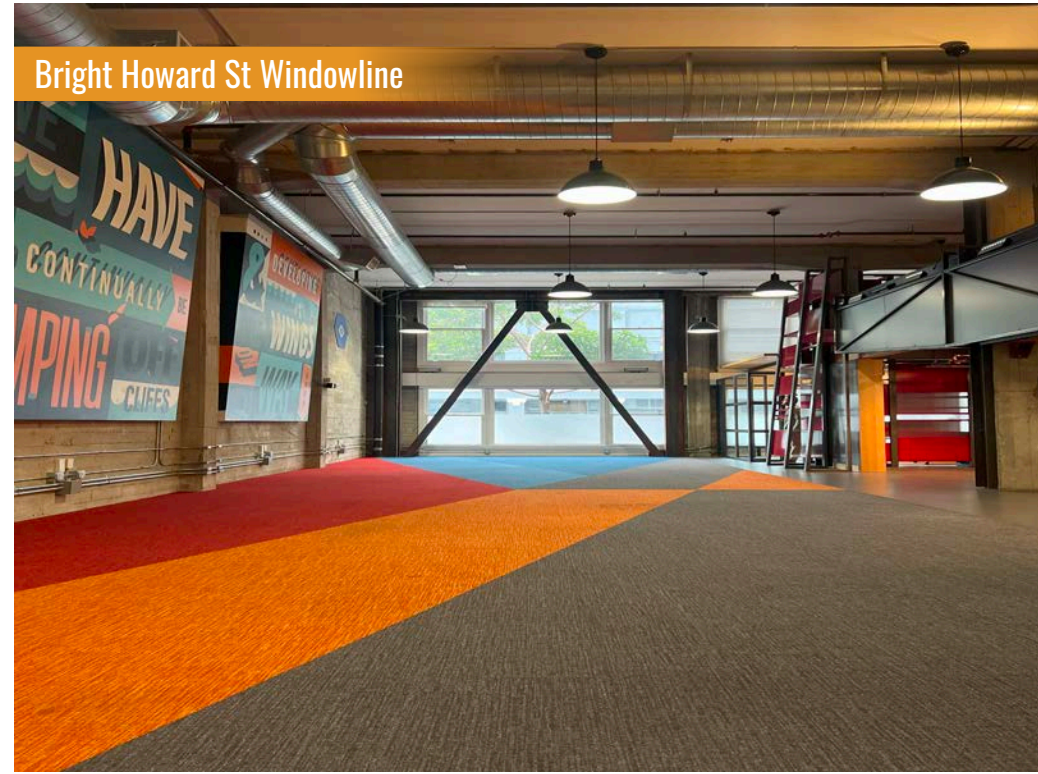
## PROPERTY DETAILS

- +/- 4,600 RSF Ground Floor Space
- Pin Drop Best East Cut Location
- Private Parking Lot On-Site
- Office/Event Space
- Exposed Concrete & Timber Aesthetics
- Two (2) Conference Rooms
- Three (3) Phone Rooms
- Open workspaces
- Full HVAC with Exposed Spiral Ductwork
- Elevator Access
- Pendant Light Fixtures Throughout
- Full Kitchen with Dishwasher, Ideal for Private Events
- Can Be Delivered Furnished
- Asking Rate: Inquire w/ Broker
- Lease Term: 1-5 Years

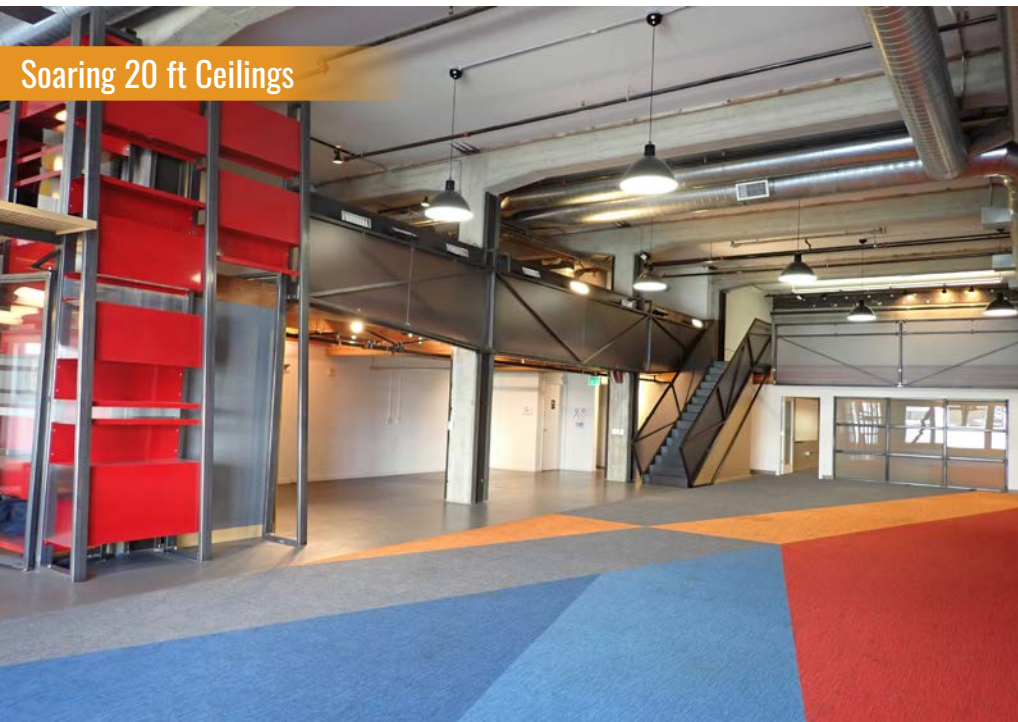




On-Site Parking Lot



Bright Howard St Windowline



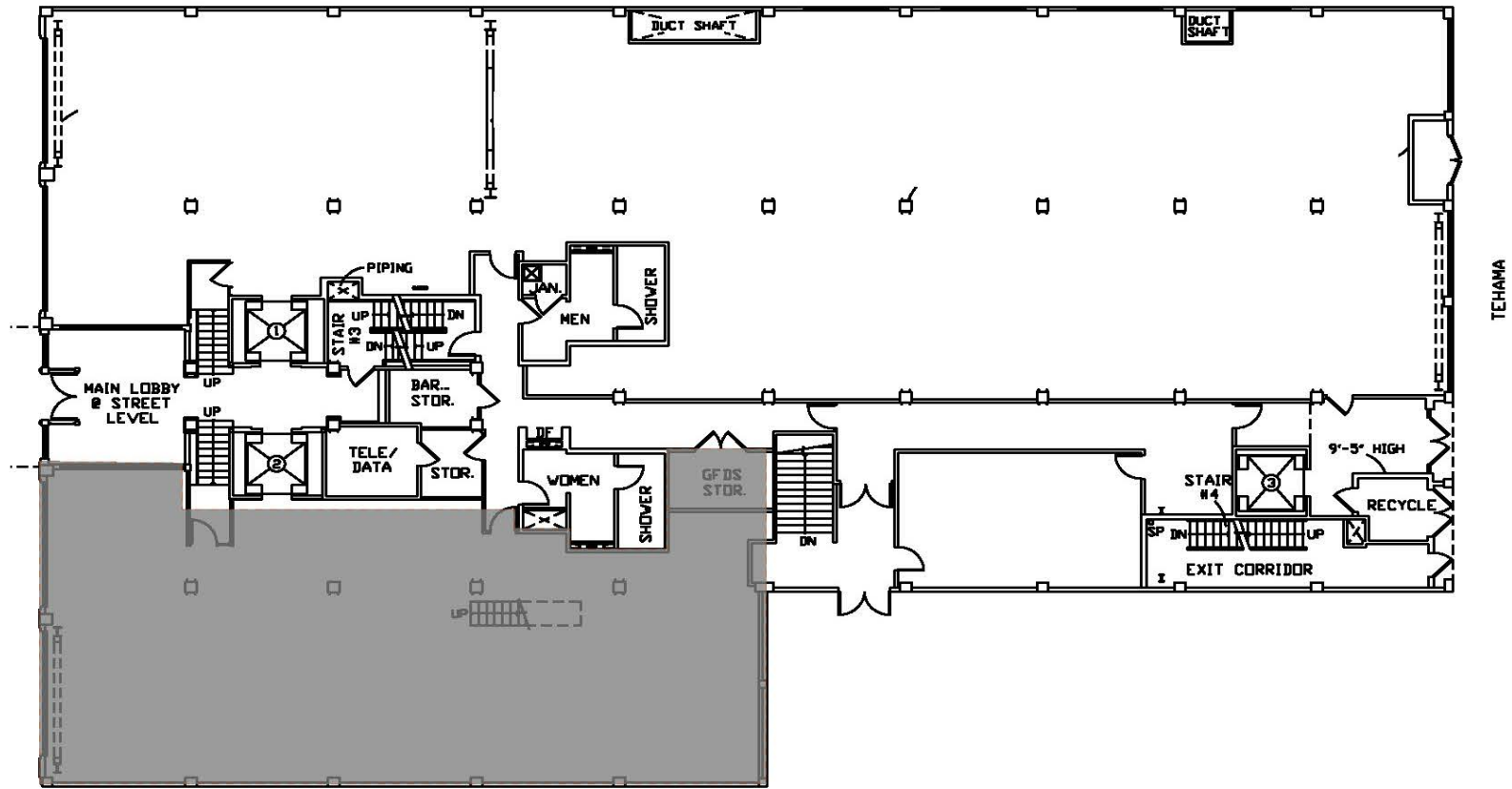
Soaring 20 ft Ceilings



Kitchen with Dishwasher

# 543 HOWARD ST | FIRST FLOOR FLOORPLAN

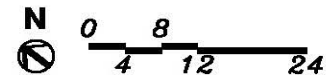
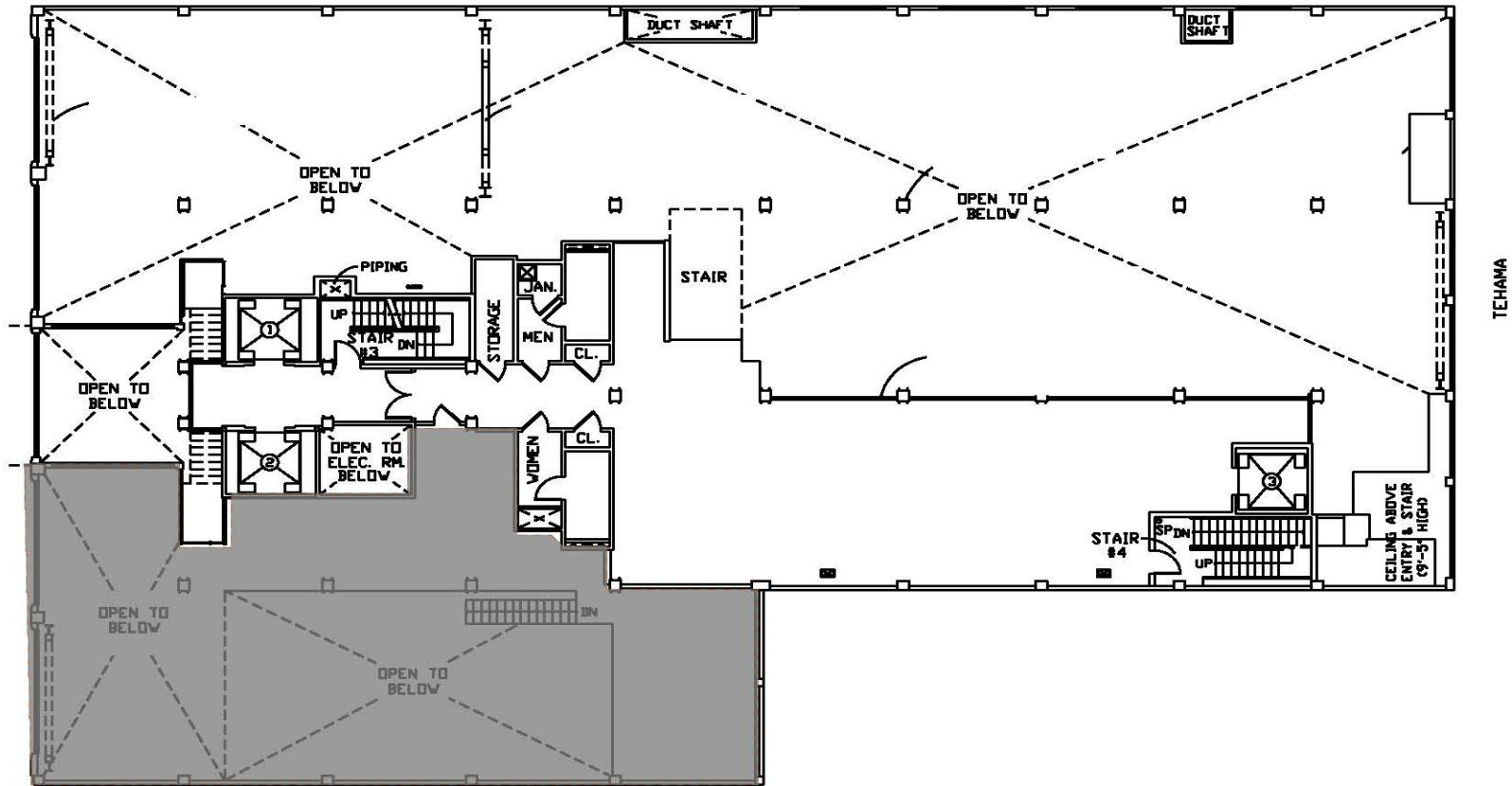
First Floor



543 HOWARD STREET, SAN FRANCISCO, CA 94105  
FIRST LEVEL FLOOR PLAN

# 543 HOWARD ST | SECOND FLOOR / MEZZANINE FLOORPLAN

2nd Floor



SECOND FLOOR +9'-7"  
ABOVE FIRST FLOOR

543 HOWARD STREET, SAN FRANCISCO, CA 94105  
SECOND LEVEL FLOOR PLAN



# 543 HOWARD ST | AMENITIES MAP



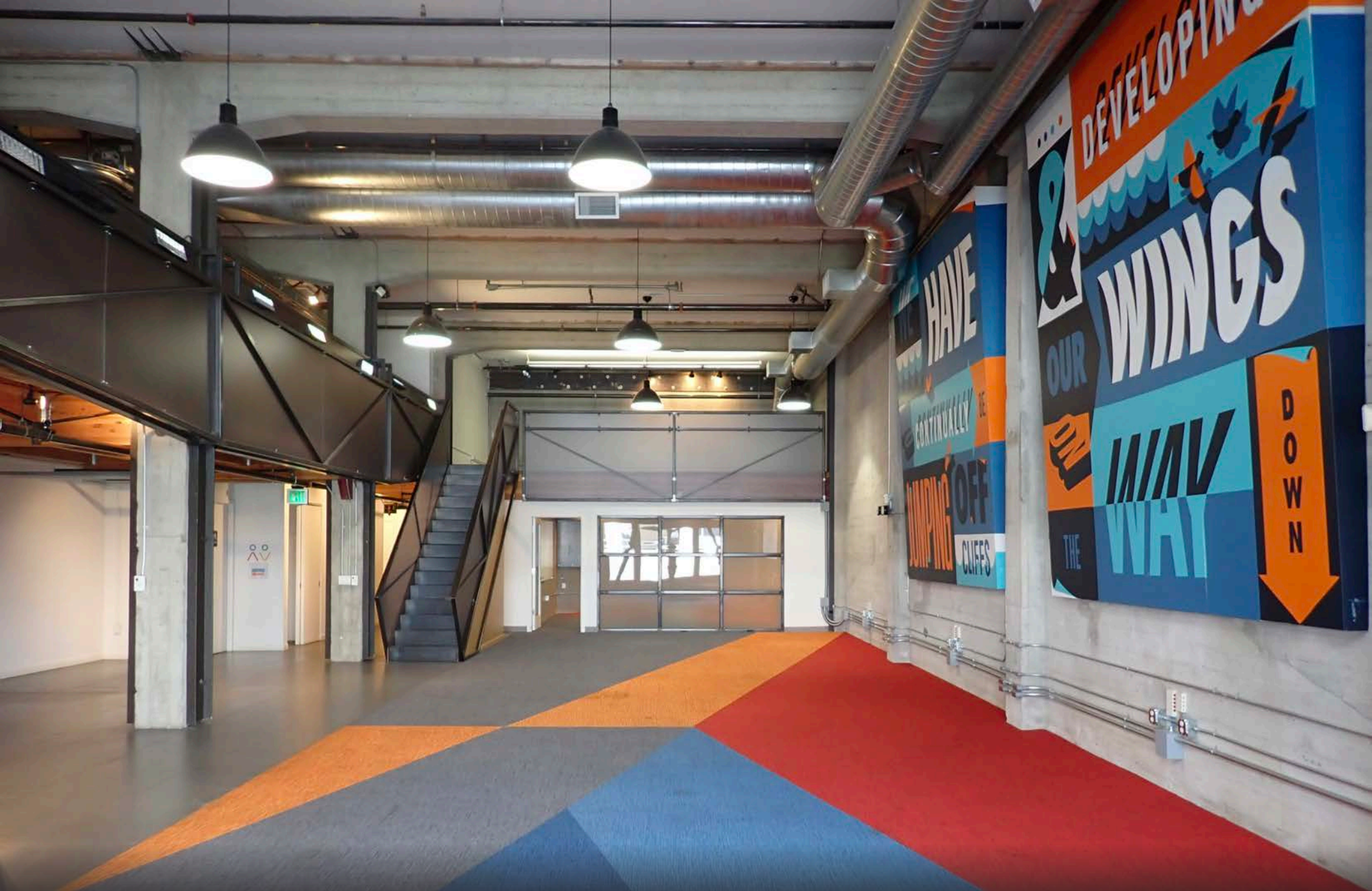
- |                          |                    |                       |                   |                   |               |                           |
|--------------------------|--------------------|-----------------------|-------------------|-------------------|---------------|---------------------------|
| 1 LinkedIn               | 4 Salesforce Tower | 7 SFMoMA              | 10 South Park     | 13 Mascone Center | 16 Sweetgreen | 19 Southside Spirit House |
| 2 Blue Bottle Coffee     | 5 Facebook         | 8 Riverbed Technology | 11 Oracle Park    | 14 Caltrain       | 17 Fitness SF | 20 Uno Dos Tacos          |
| 3 Transbay Terminal Park | 6 BART             | 9 Whole Foods         | 12 Crunch Fitness | 15 Ferry Building | 18 Sammy's    | 21 Pie Punks              |



# 543 HOWARD ST | AMENITIES







## For leasing information

Mario Previtali | Senior Vice President  
415.755.8905 | [mario@calcosf.com](mailto:mario@calcosf.com)  
LIC. 01902075

Charlie Cutler | Partner  
415.850.4935 | [charlie@calcosf.com](mailto:charlie@calcosf.com)  
LIC. 02026787

 **CALCO**  
COMMERCIAL, INC.