



Represented By:

**Jonathan Douillard**  
First Vice President

O: 615.345.7233  
[jdouillard@charleshawkinsco.com](mailto:jdouillard@charleshawkinsco.com)

**Kevin Irwin, SIOR**  
Senior Vice President

O: 615.345.7257  
[kirwin@charleshawkinsco.com](mailto:kirwin@charleshawkinsco.com)

**Tee Patterson, SIOR**  
First Vice President

O: 615.345.7229  
[tpatterson@charleshawkinsco.com](mailto:tpatterson@charleshawkinsco.com)

**Charles Hawkins Co.**

2920 Berry Hill Dr, Ste 100, Nashville, TN 37204  
P: 615.256.3189 | [www.charleshawkinsco.com](http://www.charleshawkinsco.com)

**CHARLES  
HAWKINS CO.**  
Commercial Real Estate Services



# AIRPARK BUSINESS CENTER

CHARLES HAWKINS CO.  
Commercial Real Estate Services

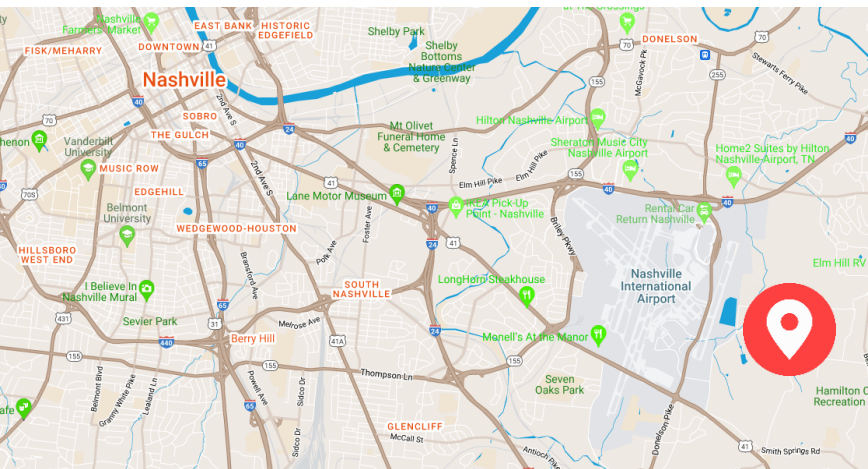
1420 Donelson Pike, B12, Nashville, TN

## 1420 DONELSON PIKE, B12 SPECIFICATIONS

→ 64% Office

±4,361 SF AVAILABLE | FLEX SPACE

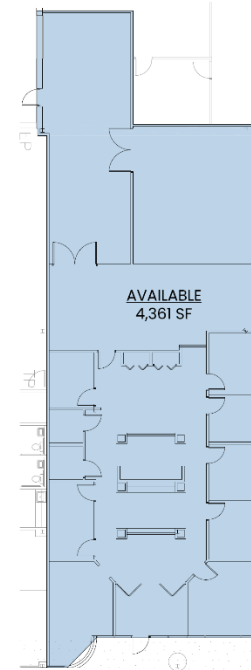
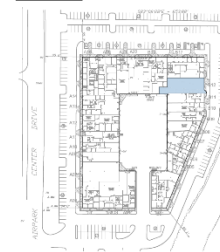
LEASE RATE: \$14.00/SF NNN  
OPEX: \$3.55/SF



AVAILABLE  
SUITE B12 - 4,361 SF

1420 DONELSON PIKE, #B12  
NASHVILLE, TN 37217

KEY PLAN



NASHVILLE, TN



**Jonathan Douillard**  
**First Vice President**  
O: 615.345.7233  
[idouillard@charleshawkinsco.com](mailto:jdouillard@charleshawkinsco.com)

**Kevin Irwin, SIOR**  
**Senior Vice President**  
O: 615.345.7257  
[kirwin@charleshawkinsco.com](mailto:kirwin@charleshawkinsco.com)

**Tee Patterson, SIOR**  
**First Vice President**  
O: 615.345.7229  
[tpatterson@charleshawkinsco.com](mailto:tpatterson@charleshawkinsco.com)

**CHARLES  
HAWKINS CO.**  
Commercial Real Estate Services

2920 Berry Hill Dr, Ste 100, Nashville, TN 37204  
P: 615.256.3189 | [www.charleshawkinsco.com](http://www.charleshawkinsco.com)



The Silverman Group is a privately owned and operated private equity and real estate development organization based in Basking Ridge, New Jersey. The firm owns and manages over 19,000,000 square feet of office, industrial, retail, and aviation properties as well 4,000 multi-family units throughout the United States. It has over 5,000,000 square feet of commercial space and 2,000 multi-family units currently under development in six states.