



S R C O M M E R C I A L

67 MAINLINE DRIVE WESTFIELD, MA

O F F E R M E M O R A N D U M

251 River Rd, West Springfield, MA 01089

(413) 505-9010, srcommercialre.com

PROPERTY FEATURES



SF: 3,000 SF

Lot size: 2.1 Acres

Zoning: BB

Built: 1968

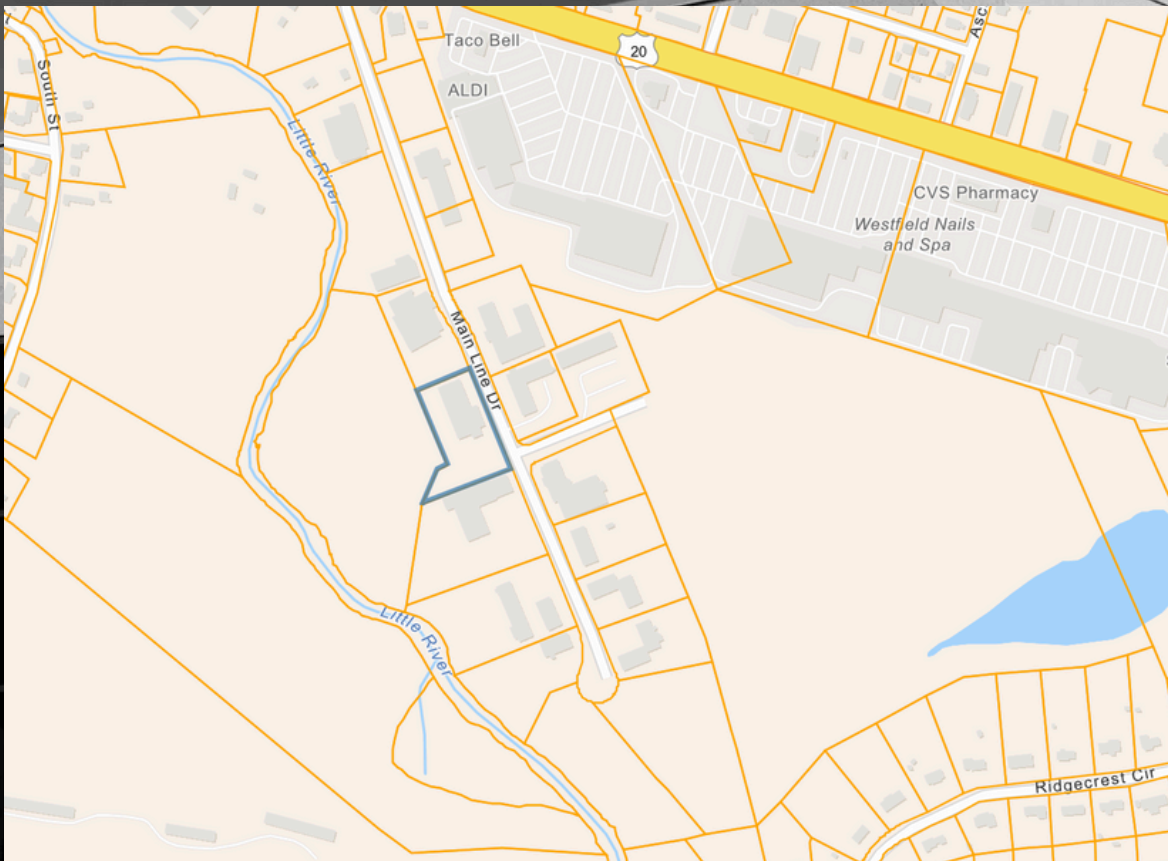




**INDUSTRIAL SPACE
WITH HIGH CEILINGS &
OVERSIZED OVERHEAD
DOOR. CONVENIENTLY
LOCATED NEAR ROUTE
20 & JUST 3-4 MILES
FROM THE I-90 MASS
PIKE.**



PARCEL OUTLINE



SR COMMERCIAL

251 River Rd, West Springfield, MA

(413) 505-9010, srcommercialre.com

Jeremy Casey

*Managing Partner of
SR Commerical Realty*



Thank You



Thank you for reviewing this offering memorandum.

If you would like anymore information, please don't hesitate to reach out.

Sincerely,

Jeremy Casey
jeremy@srcommercialre.com
(413) 505-9010
SR Commercial Realty, LLC



COMMERCIAL