

For Lease: FREE STANDING Retail/Restaurant Bldg.

SOUTHLAND PLAZA

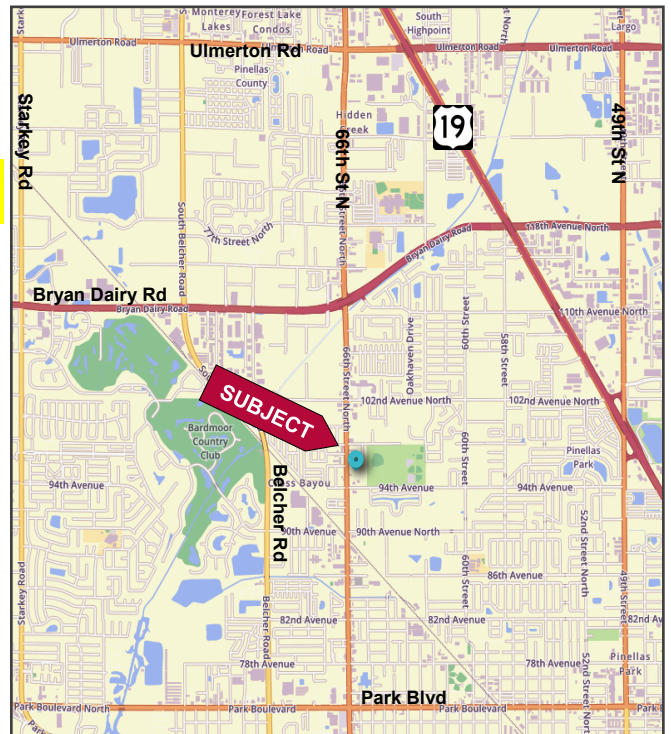
9701-9715 66TH St. N., Pinellas Park, FL 33782



FEATURES

- ❖ Highly Visible Center located on busy 66th St. N. between Bryan Dairy Rd. and Park Blvd.
- ❖ 5,518 SF 2ndGen Plug & Play Restaurant/Bar - Available
- ❖ **6,238 SF Freestanding Retail / Restaurant Building**
- ❖ Available spaces from 720 SF to 6,238 SF
- ❖ Excellent Tenant Mix which includes State Farm, Mexican Grill, Barber Shop, Coin Shop, Route 66 Diner and more!
- ❖ Resurfaced parking lot and upgraded Landscaping completed
- ❖ Leasing at \$16.00/SF NNN
- ❖ 2024 pass through expenses: \$6.50/SF

LOCATION MAP



| 2023 Demographics | | | |
|-------------------|----------|----------|----------|
| | 1-mile | 3-mile | 5-mile |
| Total Population | 9,968 | 97,167 | 272,147 |
| Total Households | 4,123 | 42,144 | 123,556 |
| Average HH Income | \$84,972 | \$85,737 | \$82,286 |

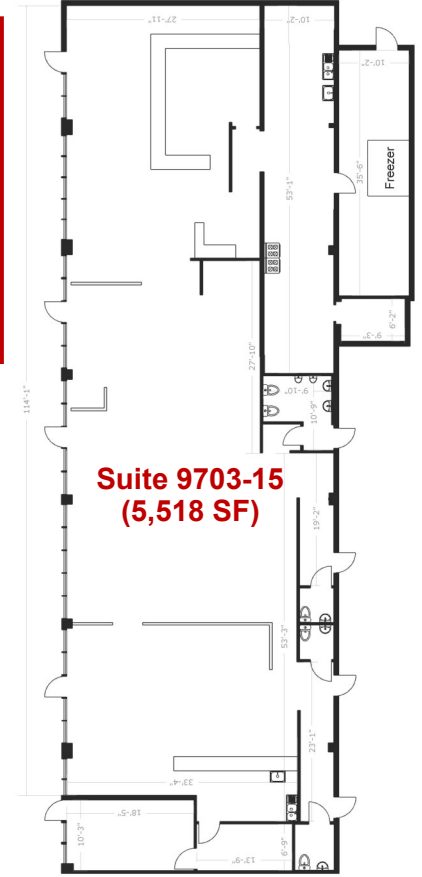
Elliott M. Ross, CCIM
 O: 813.755.6700
 C: 727.639.3800
 elliott@rossrealtytampabay.com

Chris Shryock
 O: 813.755.6700
 C: 727.412.5166
 chris@rossrealtytampabay.com

ROSS REALTY GROUP, INC.
 Henderson Centre
 3902 Henderson Blvd., Suite 203
 Tampa, FL 33629

SOUTHLAND PLAZA

9701 66th St. N., Pinellas Park, FL 33782



SITE PLAN

Parking



Parking

| Unit | SF | Date Available |
|---------|-------|----------------|
| 9701 | 720 | NOW |
| 9703-15 | 5,518 | NOW |
| 9737 | 2,700 | NOW |
| 9755-57 | 1,440 | NOW |
| 9761-63 | 1,440 | NOW |

Parking



Parking

Parking

Former Thrift Store
Office Buildout

Former Tattoo Shop

66TH STREET NORTH

Any information given herein is obtained from sources considered reliable. However, we are not responsible for misstatement of facts, errors, omissions, prior sale, withdrawal from market, modification of mortgage commitment, terms and considerations, or change in price without notice. The information supplied herein is for informational purposes only and shall not contain a warranty or assurance that said information is correct. Any person intending to rely upon the information supplied herein should verify said information independently.