

FOR LEASE ► OFFICE OR MEDICAL

+/- 2,588 SF AVAILABLE

1410 7th St., Wasco, CA 93280

PROPERTY DETAILS

- AVAILABLE SPACE: +/- 2,588 SF
- RENT: \$1.35 PSF/MO. MG
- FREESTANDING OFFICE BUILDING
- LOT SIZE: +/- 7,840 SF
- PRIVATE PARKING LOT
- ZONING: C-O, CITY OF WASCO
(PROFESSIONAL OFFICE)
- TURNKEY OFFICE BUILDING
- HIGHLY FUNCTIONAL INTERIOR
- CENTRALLY LOCATED IN THE CITY OF WASCO
- PLUMBING IN INDIVIDUAL OFFICES

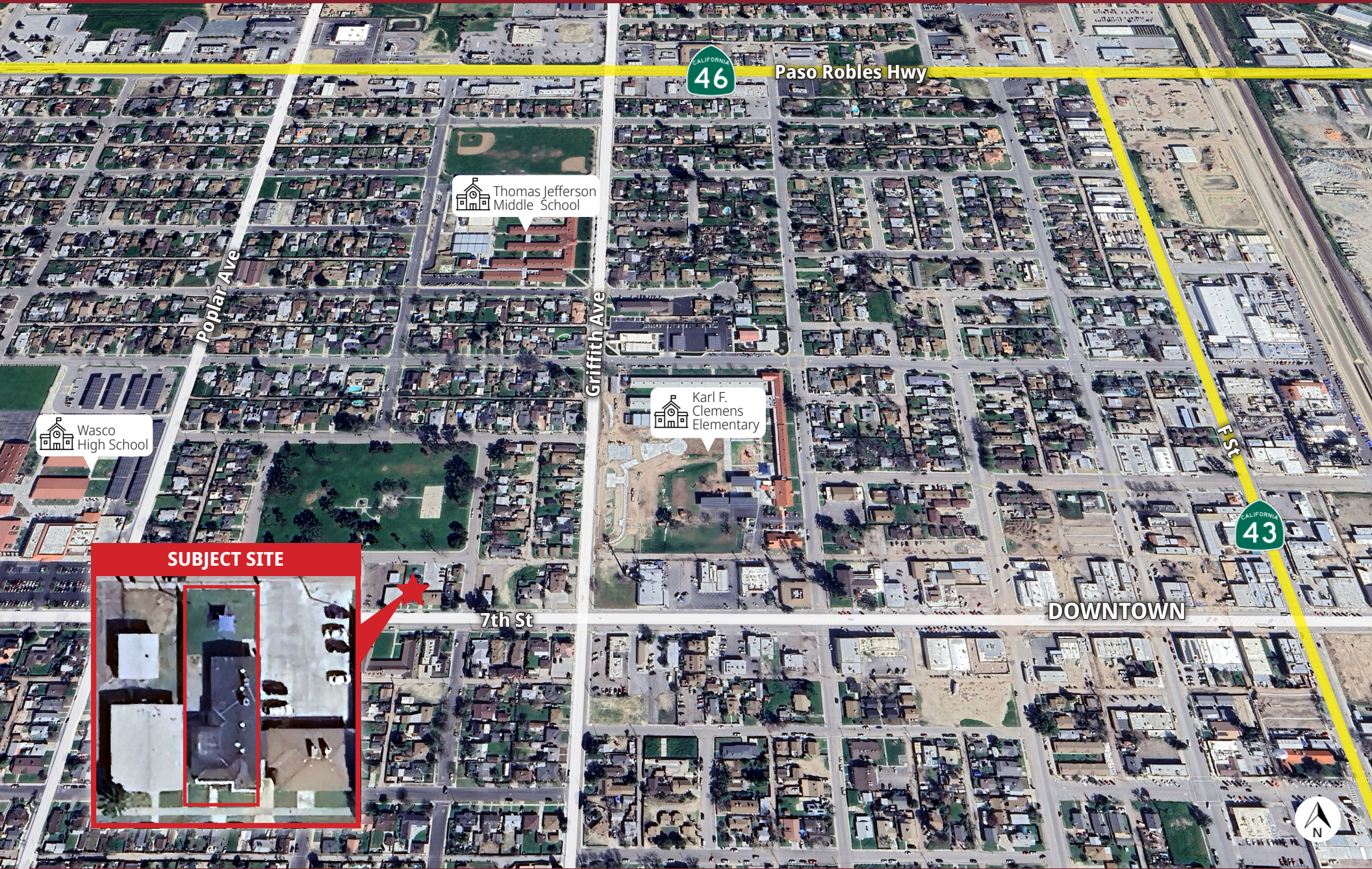


OLIVIERI COMMERCIAL GROUP

9810 Brimhall Road
Bakersfield, CA 93312
www.oliviericommercial.com

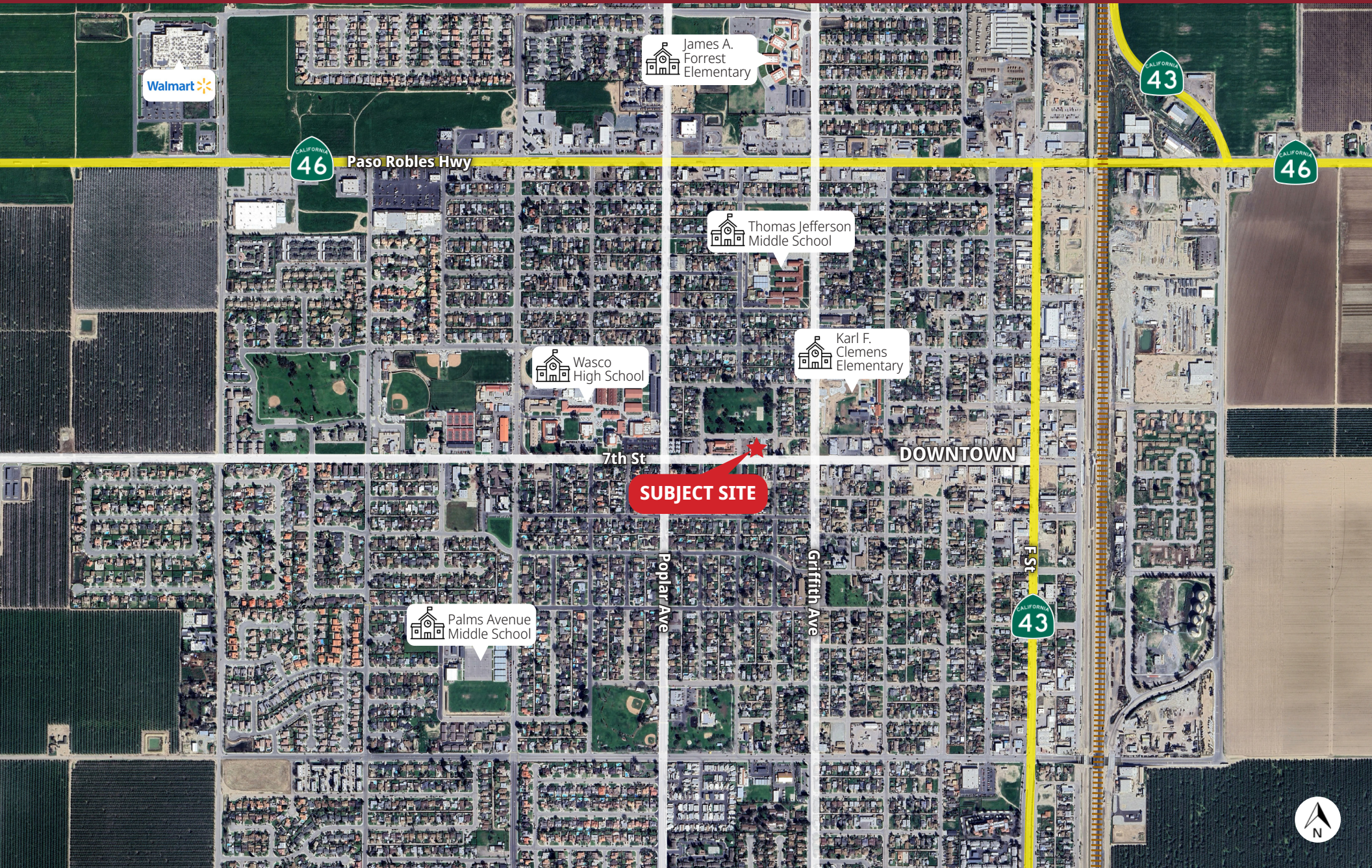
For additional information please contact:

Giana Olivieri
Senior Vice President
LIC. #01973774
(661) 616-4453
giana@oliviericommercial.com

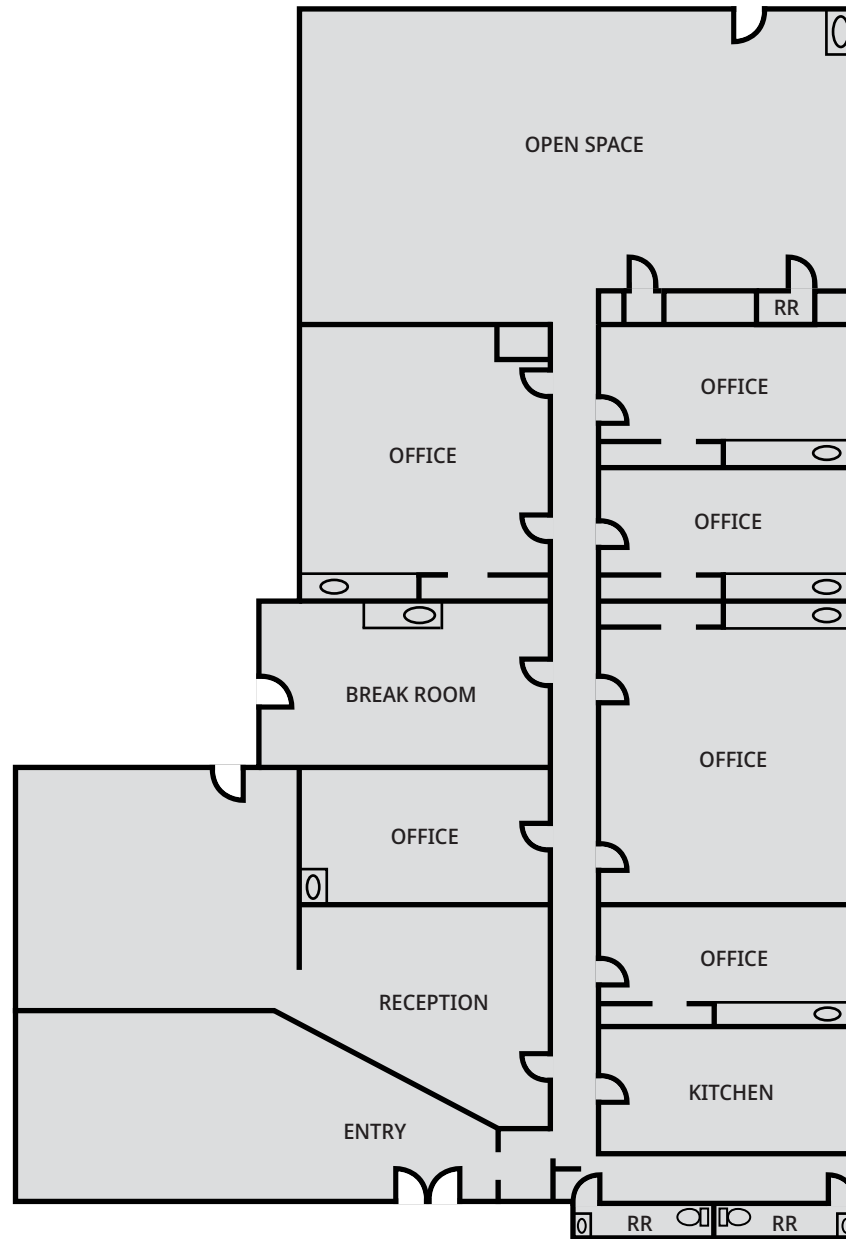


AERIAL OVERVIEW

1410 7th St., Wasco, CA 93280



The information above has been obtained from sources believed reliable. While we do not doubt its accuracy we have not verified it and make no guarantee, warranty or representation about it. It is your responsibility to independently confirm its accuracy and completeness. Any projections, opinions, assumptions or estimates used are for example only and do not represent the current or future performance of the property. The value of this transaction to you depends on tax and other factors which should be evaluated by your tax, financial and legal advisors. You and your advisors should conduct a careful, independent investigation of the property to determined to your satisfaction the suitability of the property for your needs. Logos are for identification purposes only and may be trademarks of their respective companies.



*Floor plan not to scale



