

# MADONNA PLAZA

NEQ Madonna Road & El Mercado - San Luis Obispo, CA

A PROUD MEMBER OF  
**CHAINLINKS**  
RETAIL ADVISORS



Phillip Kyle  
Senior Vice President  
CA DRE #01229165  
P 805 892 6237  
pkyle@GallelliRE.com

Gallelli Real Estate  
[www.GallelliRE.com](http://www.GallelliRE.com)



Licensed as Real Estate Salespersons by the CA DRE. The information contained herein has been obtained from sources we deem reliable. While we have no reason to doubt its accuracy, we do not guarantee it. © Gallelli Real Estate. All Rights Reserved.

# MADONNA PLAZA

## PROPERTY HIGHLIGHTS & DEMOGRAPHICS

A PROUD MEMBER OF  
**CHAINLINKS**  
RETAIL ADVISORS

**location:** 261 Madonna Road  
San Luis Obispo, CA

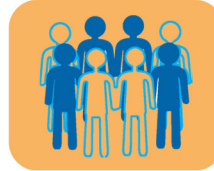
**notable anchor tenants:** Ralph's, DSW, Best Buy, Ross, Michael's, Tilly's & Five Below

**shopping center GLA:** ±319,255 Square Feet (GLA)

**availability:** ±1,421 - 62,481 SF Retail Space

**asking rent:** \$18.00 - \$33.00 PSF Annual

**NNN charges:** Est. 8.52 PSF Annual



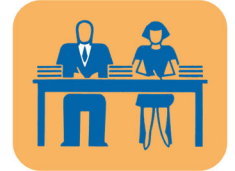
### 2024 total population

1-mile	8,623
3-mile	51,906
5-mile	63,599



### 2024 daytime population

1-mile	11,268
3-mile	76,539
5-mile	89,007



### 2024 total employees

1-mile	8,398
3-mile	45,969
5-mile	47,790



### 2024 total households

1-mile	3,576
3-mile	20,354
5-mile	21,750



### 2024 average HH income

1-mile	\$142,137
3-mile	\$131,974
5-mile	\$135,934



### traffic counts

US Hwy 101 (at Madonna Rd)	±70,000 AADT
Madonna Rd (at El Mercado)	±28,072 ADT



Phillip Kyle  
Senior Vice President  
CA DRE #01229165  
P 805 892 6237  
pkyle@GallelliRE.com

Gallelli Real Estate  
www.GallelliRE.com



Licensed as Real Estate Salespersons by the CA DRE. The information contained herein has been obtained from sources we deem reliable. While we have no reason to doubt its accuracy, we do not guarantee it. © Gallelli Real Estate. All Rights Reserved.





# MADONNA PLAZA

NEQ Madonna Road & El Mercado - San Luis Obispo, CA

A proud member of  
**CHAINLINKS**  
RETAIL ADVISORS

SITE PLAN



SUITE	TENANT	SQ. FT.
201	Ralph's	51,933
205	AVAILABLE	62,481
207	Sky Nail Salon	989
209	Club Pilates	2,496
211	AVAILABLE	3,283
243	DSW	17,589
253-11A	Christians Mattress	2,411
253-11B	Christians Mattress	2,439
253-12	Starbucks	1,200
253-13	Supercuts	1,200
255	Best Buy	30,000
257	The Good Feet Store	2,335
261	AVAILABLE	3,718
265-A	AVAILABLE	1,421
269	AVAILABLE	4,268
271-A	Five Below	10,012
271-B	AVAILABLE	10,036
273-A	Ross Dress For Less	22,020
273-B	Michael's	21,729
273-C	Tilly's	6,500
275	McDonald's	3,705
281-A	Madonna Dental	2,818
281-C	ULTA Beauty	10,000
283-A	See's Candies	1,520
283-B	Med Stop Urgent Care	3,000
283-C	Men's Warehouse	4,179
285-A	AVAILABLE	1,485
285-B	AVAILABLE	1,505
285-C	Sushi Kokku	1,455
297-A	Chipotle	2,294
299	Dave's Hot Chicken	3,925

For leasing information,  
please contact:

Phillip Kyle  
Senior Vice President  
CA DRE #01229165  
pkyle@GallelliRE.com

Gallelli Real Estate  
P 805 892 6237  
www.GallelliRE.com



# MADONNA PLAZA

## PROPERTY OVERVIEW

A PROUD MEMBER OF  
**CHAINLINKS**  
RETAIL ADVISORS

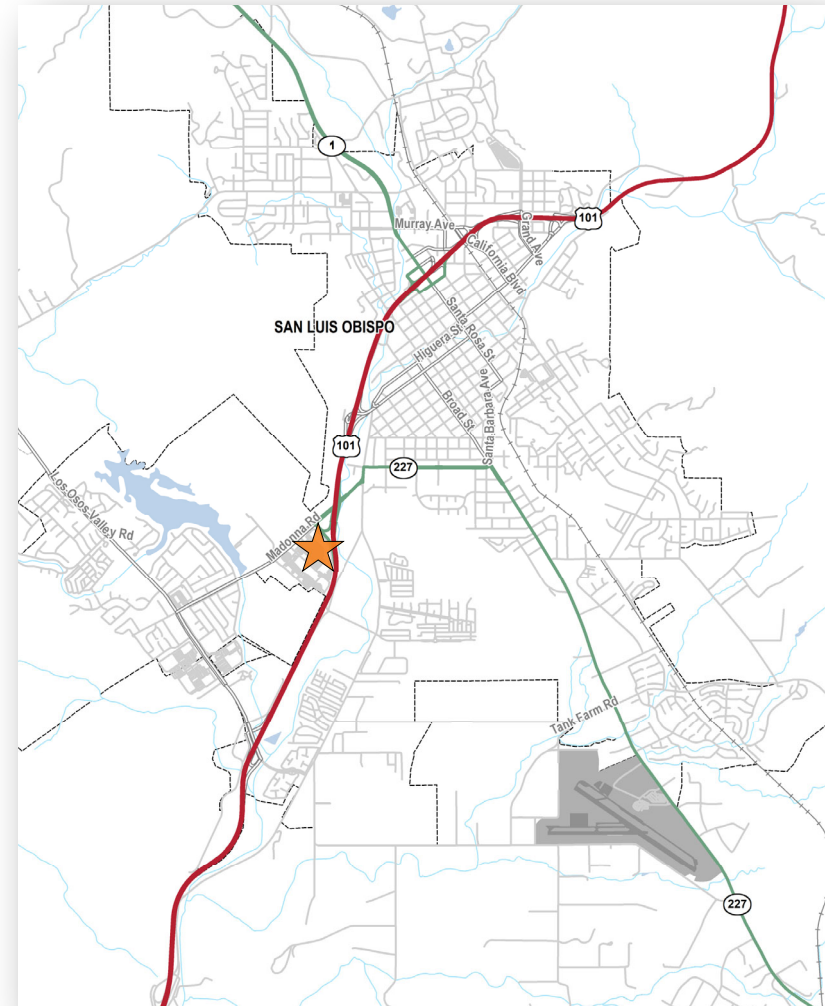
**Madonna Plaza** is a ±319,255 square foot power center located at the northeast quadrant of Madonna Road and El Mercado along Highway 101 in south western San Luis Obispo, California.

Part of more than 2.2 million square feet of commercial retail in the San Luis Obispo trade area, **Madonna Plaza** is anchored by Ralph's, DSW, Best Buy, Ross, Michael's, Five Below, Tilly's and Ulta. **Madonna Plaza** is highly visible and conveniently accessible to more than 69,000 cars per day traveling US Highway 101.

Major retailers in the trade area include Sprouts, Cost Plus World Market, Target, Dick's Sporting Goods, Costco, Home Depot, Whole Foods, TJ Maxx, HomeGoods, BevMo!, Grocery Outlet, PetSmart, CVS & Trader Joes.

With a city population of more than 47,000 people, the City of San Luis Obispo is the largest city in San Luis Obispo County and is its County Seat.

Notable traffic generators and in the region include California Polytechnic State University (more than 22,000 students), Morro Bay State Park, and several marquee wineries such as Edna Valley Vineyards, J. Lohr Vineyards, Margarita Vineyards and Soaring Hawk Vineyards.



Phillip Kyle  
Senior Vice President  
CA DRE #01229165  
P 805 892 6237  
pkyle@GallelliRE.com

Gallelli Real Estate  
www.GallelliRE.com

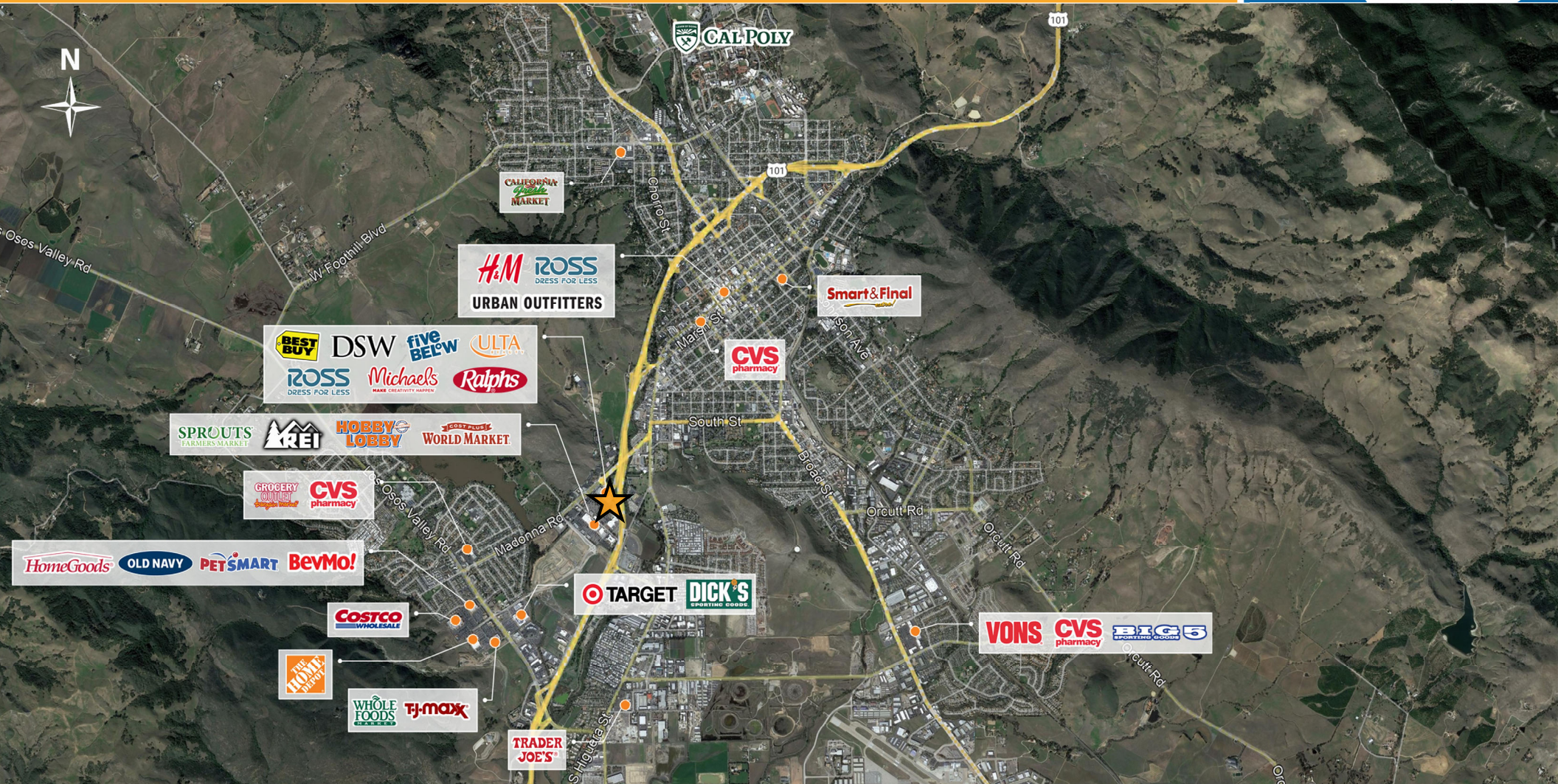




# MADONNA PLAZA

## RETAIL TRADE AREA AERIAL

A PROUD MEMBER OF  
**CHAINLINKS**  
RETAIL ADVISORS



Phillip Kyle  
Senior Vice President  
CA DRE #01229165  
P 805 892 6237  
pkyle@GallelliRE.com

Gallelli Real Estate  
[www.GallelliRE.com](http://www.GallelliRE.com)



Licensed as Real Estate Salespersons by the CA DRE. The information contained herein has been obtained from sources we deem reliable. While we have no reason to doubt its accuracy, we do not guarantee it. © Gallelli Real Estate. All Rights Reserved.

