

1950 W. FORT ST

DETROIT, MICHIGAN

+/-107,000 SF // FOR SALE

Albert Ellis
Senior Associate
+1 248 358 6111
albert.ellis@cushwake.com

John VanNoord
Senior Associate
+1 248 358 6106
john.vannoord@cushwake.com

Garrett Keais
Executive Managing Director
+1 248 358 6112
garrett.keais@cushwake.com



PROPERTY HIGHLIGHTS

+/- 107,000 SF

FOR OWNER USE/ REDEVELOPMENT

- + Industrial space ready for redevelopment
- + Ceiling heights 20'+ throughout
- + Four (4) interior loading docks
- + Zoned M4: Heavy Industrial
- + Less than a mile from Detroit Train Station redevelopment by Ford Motor Company
- + Detroit River and Ambassador Bridge views possible
- + Additional space available at 1910 W. Fort St (723 Rosa Parks)
- + (Total Site: 5.16 acres)



AERIAL MAP



W LAFAYETTE BLVD

ROSA PARKS BLVD

W FORT ST

1910 W. FORT STREET
(723 ROSA PARKS BLVD)
DETROIT, MI 48216

1950 W. FORT ST
DETROIT, MI 48216

BUILDING SPECS

1950 W. FORT ST
DETROIT, MI 48216

GENERAL INFORMATION

| | |
|------------------------|---|
| ADDRESS | 1950 W. Fort Street Detroit, MI 48216 |
| TOTAL BUILDING AREA | 107,000 SF |
| OFFICE AREA | N/A |
| INDUSTRIAL AREA | 107,000 SF |
| DIVISIBLE TO | 25,000 SF |
| PRIMARY USE | Industrial/ Manufacturing/ Redevelopment |
| PROPERTY CLASS | C |
| YEAR BUILT / RENOVATED | 1920/1975 |
| CONSTRUCTION TYPE | Metal |
| STORIES | 1 |
| ROOF | Standing metal seam |

SITE DETAILS

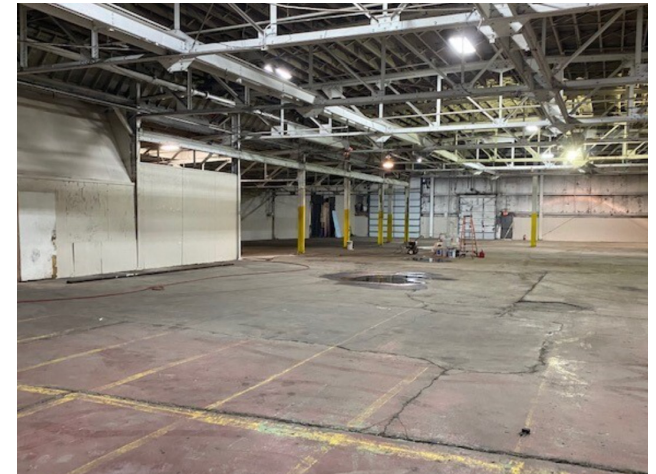
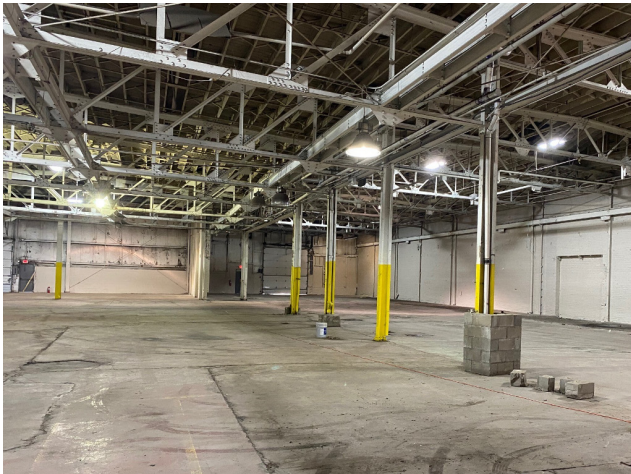
| | |
|------------------|-----------------------------|
| TOTAL ACREAGE | 2.53 AC |
| ZONING | M4: Heavy Industrial |
| PARCEL ID | 08-000042 |
| MAJOR CROSSROADS | W Fort St & Rosa Parks Blvd |

BUILDING AMENITIES

| | |
|--------------------------|--|
| CEILING CLEARANCE | 20'+ throughout |
| DOCKS DOORS | Four (4) interior |
| GRADE DOORS | Five (5) 12'x14' |
| TRUCK WELLS | Two (2) |
| INDUSTRIAL AREA HVAC | Tubular radiant |
| INDUSTRIAL AREA LIGHTING | Metal halide |
| FLOOR THICKNESS | ~6" |
| FLOOR DRAINS | Yes |
| FIRE SUPPRESSION | Yes (wet) |
| ELECTRIC | 600a/220v/3p |
| AIR LINES | Yes |
| LUNCH/BREAK ROOM | Yes |
| BUILDING EXPANDABLE | Yes |
| ROOF | Full roof updates within last 5 years |

BUILDING PHOTOS

1950 W. FORT ST
DETROIT, MI 48216



ALBERT ELLIS
Senior Associate
+1 248 358 6111
albert.ellis@cushwake.com

JOHN VANNOORD
Senior Associate
+1 248 358 6106
john.vannoord@cushwake.com

GARRETT KEAIS
Executive Managing Director
+1 248 358 6112
garrett.keais@cushwake.com

