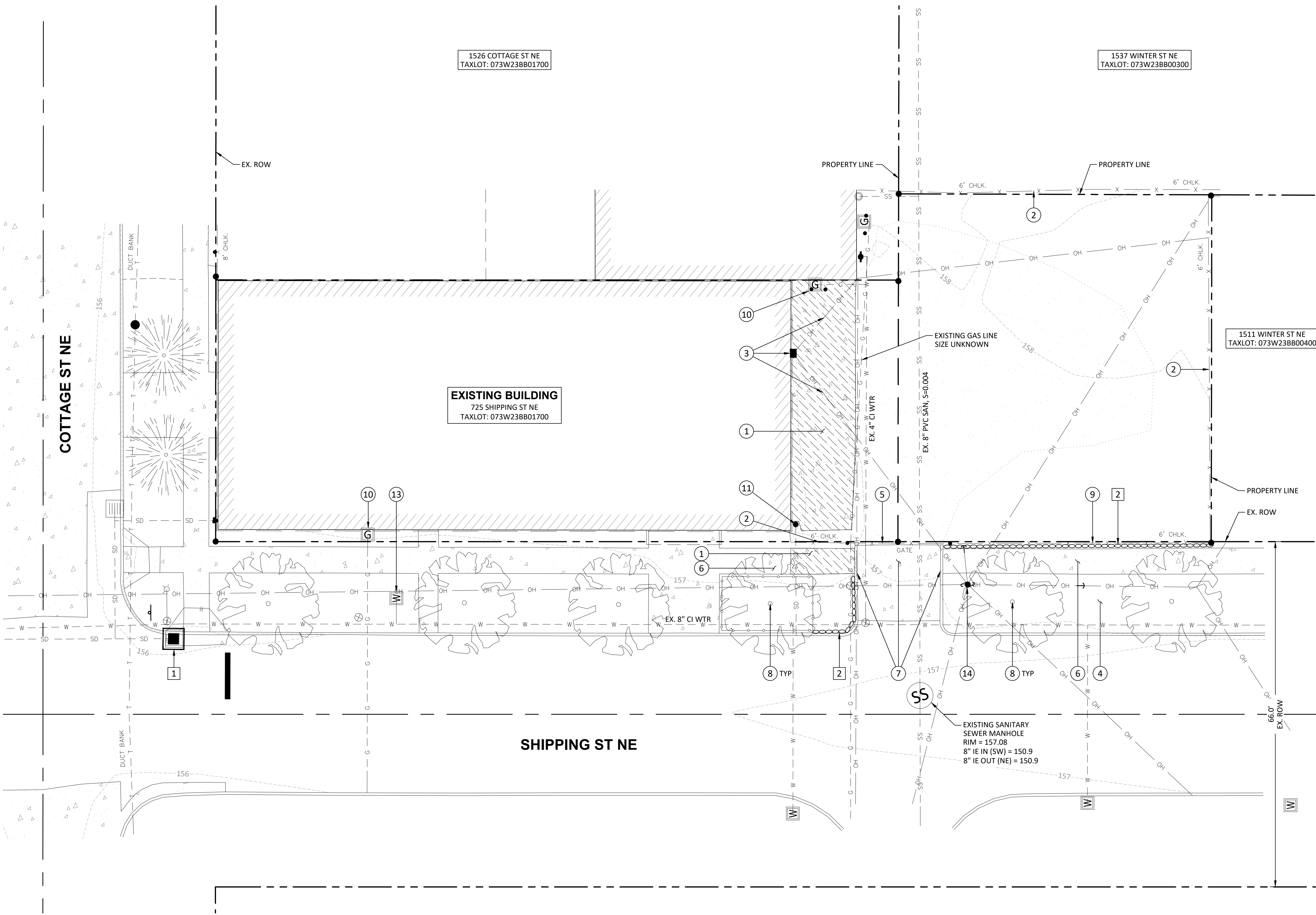


P:\04-Salem\ACO (AC-Coi)\ACO-01 (Glaze-Shipping Apartments)\ACO01-DWGSS\Sheets\ACO01 C1.0 - Ex. Conditions, Demo, ESC.dwg



DEMOLITION KEYNOTES:

- 1 REMOVE EXISTING CONCRETE. SAWCUT AT NEAREST TOOLED JOINT FOR SIDEWALK REMOVAL.
- 2 REMOVE EXISTING FENCE.
- 3 REMOVE EXISTING POWER SERVICE AND OVERHEAD LINES. REFER TO ARCHITECTURAL PLANS FOR MORE INFORMATION.
- 4 PROTECT EXISTING LANDSCAPE AREA.
- 5 PROTECT AND MAINTAIN EXISTING SLIDING GATE.
- 6 PROTECT EXISTING PUBLIC SIDEWALK.
- 7 PROTECT EXISTING CONCRETE DRIVEWAY ENTRANCE AND CURBS.
- 8 PROTECT EXISTING TREE. INSTALL TREE PROTECTION FENCING WHERE SHOWN ON THE PLANS AND PER DETAIL ON SHEET C3.0.
- 9 PROTECT EXISTING FENCE.
- 10 PROTECT EXISTING GAS METER.
- 11 PROTECT EXISTING DOWNSPOUT.
- 13 REMOVE AND REPLACE EXISTING DOMESTIC WATER METER AND SERVICE. SEE SHEET C2.0 FOR ADDITIONAL INFORMATION.
- 14 PROTECT EXISTING POLE.

EROSION AND SEDIMENT CONTROL KEYNOTES:

- 1 INSTALL TYPE 5 INLET PROTECTION PER DETAIL ON SHEET C3.0.
- 2 INSTALL WATTLES PER DETAIL ON SHEET C3.0.

PROPOSED LEGEND

- TREE PROTECTION FENCE
- WATTLES
- INLET PROTECTION
- CONCRETE REMOVAL

EXISTING LEGEND

- RIGHT-OF-WAY (ROW) / PROPERTY LINES
- EXISTING CONTOUR
- CATCH BASIN
- ROOF DRAIN
- SANITARY SEWER MANHOLE
- WATER METER
- WATER VALVE
- FIRE HYDRANT
- FIRE DEPT. CONNECTION
- POWER METER
- UTILITY POLE
- GUY WIRE
- UTILITY STUB UP
- GAS METER
- GAS VALVE
- SIGN
- GATE POST
- BOLLARD
- CONCRETE
- GRAVEL
- DECIDUOUS TREE & TRUNK SIZE
- CONIFEROUS TREE & TRUNK SIZE
- SEWER LINE UNDERGROUND
- STORM LINE UNDERGROUND
- WATERLINE UNDERGROUND
- GAS LINE UNDERGROUND
- COMMUNICATION LINE
- ELECTRICAL LINE UNDERGROUND
- OVERHEAD POWER LINE
- FENCE LINE

EX. CONDITIONS, DEMO & ESC PLAN
GLAZE - SHIPPING APARTMENTS
 SALEM, OREGON

Harper Houf Peterson
Righellis Inc.
 ENGINEERS & PLANNERS
 LANDSCAPE ARCHITECTS & SURVEYORS
 530 Center Street NE, Suite 240, Salem, OR 97301
 phone: 503.365.1131 www.hhpri.com fax: 503.221.1171



DESIGNED:	HHPR	DRAWN:	CJM	CHECKED:	RMM	DATE:	OCT 2022
DATE:		NO.					
							R
							E
							V
							I
							S
							I
							O
							N
							S

SHEET NO.
C1.0
 JOB NO.
 ACO-01

GENERAL NOTES:

WORK SHALL CONFORM WITH THE CITY OF SALEM STANDARDS, THE INTERNATIONAL BUILDING CODE (IBC), OREGON PLUMBING SPECIALTY CODE (OPSC) AND THE UNIFORM PLUMBING CODE (UPC). IT IS CONTRACTOR'S RESPONSIBILITY TO ENSURE WORK IS PERFORMED IN COMPLIANCE WITH LOCAL CODE AND REGULATIONS.

THE CONTRACTOR SHALL PROVIDE ALL WORK ILLUSTRATED ON THE DRAWINGS AND ALL INCIDENTAL WORK CONSIDERED NECESSARY TO COMPLETE THE PROJECT IN A MANNER ACCEPTABLE TO THE OWNER INCLUDING MITIGATING CONFLICTS WITH EXISTING UTILITIES, CONNECTING EXISTING UTILITIES TO PROPOSED FACILITIES, AND FIELD VERIFYING EXISTING UTILITIES PRIOR TO PROJECT COMPLETION.

THE CONTRACTOR SHALL KEEP AN APPROVED AND UPDATED SET OF DRAWINGS ON THE PROJECT SITE AT ALL TIMES. THE CONTRACTOR SHALL KEEP A SET OF PLANS MARKED UP WITH AS-BUILT CONDITIONS AND CHANGES FOR FUTURE AS-BUILT RECORD DRAWINGS.

EXISTING CONDITIONS SHOWN ON THE PLAN ARE FROM TOPOGRAPHIC SURVEY PREPARED BY FORTY-FIVE NORTH SURVEYING IN JUNE OF 2022. ELEVATIONS WERE ESTABLISHED BY GPS RTK METHODS TO CITY OF SALEM BENCHMARK "1208". MARK IS A BRASS DISK IN THE CURB AT THE SOUTHWEST CORNER OF SHIPPING STREET NE AND FRONT STREET NE. ELEVATION = 153.05' (CITY OF SALEM DATUM, NGVD29). THE CONTRACTOR SHALL NOTIFY THE ENGINEER OF ANY DISCREPANCIES.

THE LOCATION AND DESCRIPTIONS OF EXISTING UTILITIES SHOWN ARE COMPILED FROM AVAILABLE RECORDS AND/OR FIELD SURVEYS. THE ENGINEER, CITY, AND UTILITY COMPANIES DO NOT GUARANTEE THE ACCURACY NOR THE COMPLETENESS OF SUCH RECORDS. EXISTING TOPOGRAPHIC INFORMATION SHOWN IS BASED ON SURVEY PERFORMED BY FORTY-FIVE NORTH. THE ENGINEER MAKES NO GUARANTEE, OR WARRANTY, THAT THE UTILITIES SHOWN COMPRISE ALL SUCH UTILITIES IN THE AREA, WHETHER ACTIVE OR ABANDONED. THE CONTRACTOR IS RESPONSIBLE TO POT-HOLE AND VERIFY CRITICAL UTILITY CROSSINGS AND CONFLICTS PRIOR TO CONSTRUCTION. THE CONTRACTOR SHALL CONTACT THE DESIGN ENGINEER IN A TIMELY MANNER IF CONFLICTS ARISE. CONTRACTOR ASSUMES ALL RISK AND SCHEDULE DELAYS IF THE CONTRACTOR DOES NOT POT-HOLE PRIOR TO CONSTRUCTION AND COORDINATE WITH ENGINEER.

THE CONTRACTOR SHALL COMPLY WITH ALL REQUIREMENTS OR ORS 757.541 TO 757.571. THE CONTRACTOR SHALL NOTIFY EACH UNDERGROUND UTILITY AT LEAST 48 BUSINESS-DAY HOURS PRIOR TO EXCAVATING, BORING, OR POTHOLING. ALL UTILITY CROSSINGS SHALL BE POTHOLED AS NECESSARY PRIOR TO EXCAVATING OR BORING TO ALLOW THE CONTRACTOR TO PREVENT GRADE OF ALIGNMENT CONFLICTS.

THE CONTRACTOR SHALL EXPOSE AND VERIFY BOTH THE HORIZONTAL AND VERTICAL LOCATION OF EXISTING UTILITIES. THE CONTRACTOR SHALL CONNECT AND/OR MATCH EXISTING UTILITIES AND PROPOSED IMPROVEMENTS IN CONFORMANCE WITH THE INTENT OF THESE PLANS TO PROVIDE COMPLETE AND FULLY OPERATIONAL SYSTEMS.

PROVISIONS SHALL BE MADE BY THE CONTRACTOR TO KEEP ALL EXISTING UTILITIES IN SERVICE AND PROTECT THEM DURING CONSTRUCTION. ANY DAMAGE TO EXISTING UTILITIES, WHETHER SHOWN OR NOT ON THESE DRAWINGS, SHALL BE REPAIRED AT CONTRACTOR'S EXPENSE AS INCIDENTAL TO THE CONTRACT.

CONTRACTOR SHALL CONFIRM ALL REQUIRED PERMITS AND LICENSES HAVE BEEN ISSUED BEFORE STARTING CONSTRUCTION

CONTRACTOR SHALL NOTIFY THE PROJECT ENGINEER AND THE CITY OF SALEM INSPECTOR 48 HOURS BEFORE INSPECTION.

CONSTRUCTION VEHICLES ARE NOT ALLOWED TO BE STAGED IN THE PUBLIC RIGHT-OF-WAY WITHOUT PRIOR APPROVAL.

EXISTING FACILITIES INTENDED TO REMAIN WHICH ARE DAMAGED DURING CONSTRUCTION SHALL BE REPAIRED AT THE CONTRACTOR'S EXPENSE, TO THE SATISFACTION OF THE APPLICABLE AGENCY REPRESENTATIVE.

ANY ALTERATION OR VARIANCE FROM THESE PLANS, EXCEPT MINOR FIELD ADJUSTMENTS NEEDED TO MEET EXISTING FIELD CONDITIONS, SHALL FIRST BE APPROVED BY THE APPLICABLE AGENCY REPRESENTATIVE. ANY ALTERATION OR VARIANCE FROM THESE PLANS SHALL BE DOCUMENTED ON CONSTRUCTION FIELD PRINTS AND TRANSMITTED TO THE PROJECT ENGINEER.

CONTRACTOR SHALL PROVIDE THE NECESSARY EROSION PROTECTION TO MINIMIZE EROSION AND IMPACT TO ADJACENT PROPERTIES.

OPEN TRENCHES SHALL BE STRICTLY LIMITED TO A MAXIMUM OF 100 FEET UNLESS LIMITED TO A LESSER AMOUNT BY PERMIT. NO TRENCHES WILL BE ALLOWED TO REMAIN OPEN AT NIGHT.

CONTRACTOR SHALL MAINTAIN ACCESS TO EXISTING FACILITIES TO THE MAXIMUM EXTENT POSSIBLE. OWNER SHALL BE NOTIFIED 24-HOURS IN ADVANCE OF ANY ACCESS CLOSURES.

AT THE END OF EACH WORK DAY THE CONTRACTOR SHALL CLEAN UP THE PROJECT AREA AND LEAVE IT IN A NEAT AND SECURED MANNER. UPON COMPLETION, THE CONTRACTOR SHALL LEAVE THE PROJECT AREA FREE OF DEBRIS AND UNUSED MATERIAL.

ALL MATERIAL SUPPLIERS SHALL SUBMIT TO THE ENGINEER PROOF OF MATERIAL(S) TESTED IN ACCORDANCE WITH SPECIFICATIONS. BY ACCEPTANCE OF THE CONTRACT WITH THE OWNER/DEVELOPER, THE CONTRACTOR CERTIFIES THAT ALL MATERIALS DELIVERED TO THE JOB SITE WILL MEET OR EXCEED THOSE SPECIFICATIONS. ANY MATERIAL NOT CONFORMING SHALL BE REMOVED FROM THE SITE AT NO ADDITIONAL COST TO THE OWNER.

GENERAL SITE PREPARATION:
ALL EARTHWORK, EXCAVATION, BACKFILL TO FOLLOW CITY OF SALEM STANDARDS.

PRIOR TO BEGINNING CONSTRUCTION, ALL AREAS OF THE SITE THAT WILL RECEIVE PAVEMENT SHOULD BE STRIPPED OF TOP SOIL, ROOTS, UNSUITABLE FILLS, I.E. AND EXCAVATED TO NON-ORGANIC, NATIVE UNDISTURBED SOIL OR COMPACTED STRUCTURAL FILL.

THE CONTRACTOR SHALL PRUNE ALL VEGETATION, AS NECESSARY, AWAY AND UP FROM THE AREA OF WORK. THE CONTRACTOR SHALL PROTECT ALL EXISTING LANDSCAPING THAT IS TO REMAIN. ARBORIST SHALL BE CONTACTED IF SIGNIFICANT ROOTS ARE UNCOVERED.

MISC. UTILITIES:
PLACE DETECTABLE MARKING TAPE AND TRACER WIRE IN THE TRENCH DIRECTLY ABOVE, PARALLEL TO, AND ALONG THE ENTIRE LENGTH OF ALL NONMETALLIC PIPE AND CONDUIT.

GRADING NOTES:

TOTAL NEW/REPLACED IMPERVIOUS AREA = 1,505 SF

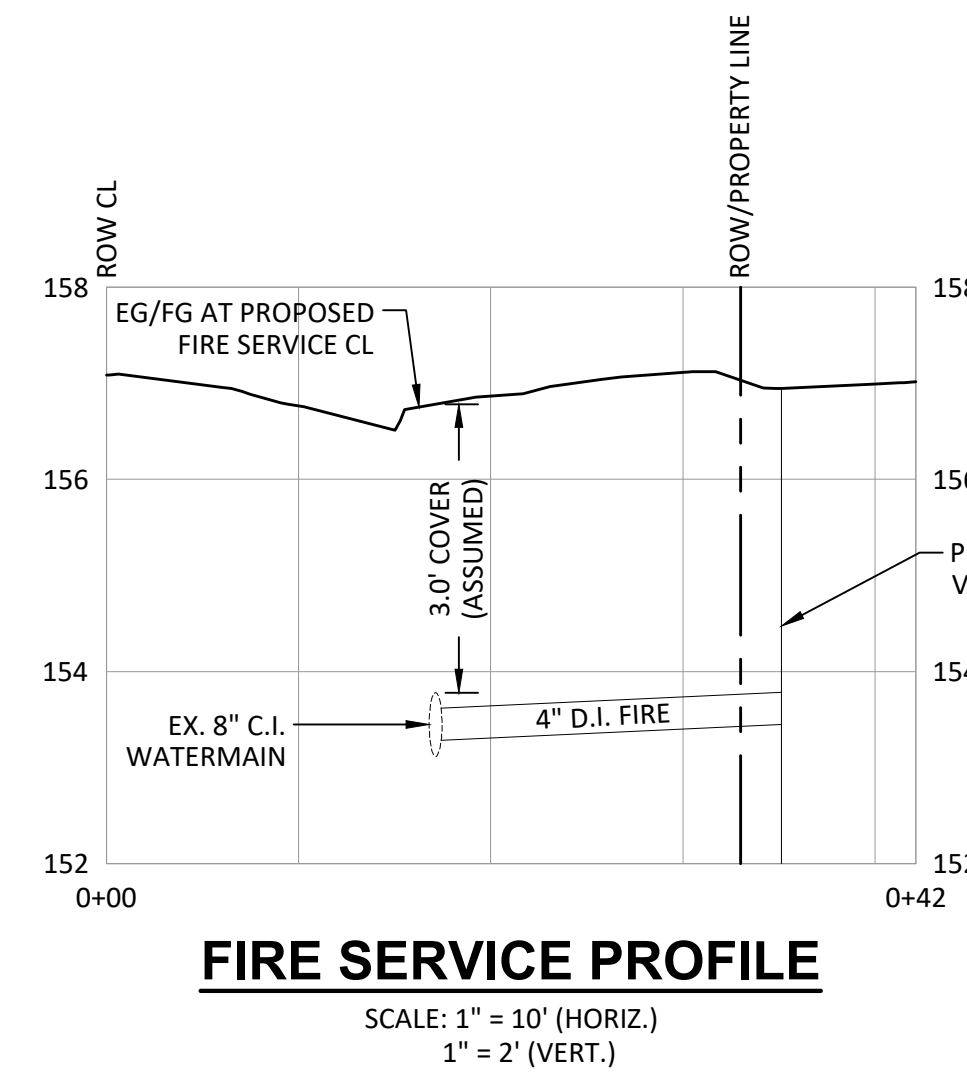
NEW AND/OR REPLACED IMPERVIOUS AREA IS LESS THAN 10,000 SF. THEREFORE, STORMWATER MANAGEMENT IS NOT REQUIRED PER CITY OF SALEM PWDS 4.2(A)(2).

CONSTRUCTION KEYNOTES:

- 1 CONSTRUCT ASPHALT PAVEMENT PER SECTION DETAIL ON SHEET C3.0.
- 2 TRASH ENCLOSURE. SEE ARCHITECTURAL PLANS FOR MORE DETAIL.
- 3 CONSTRUCT CONCRETE SIDEWALK REPLACEMENT PER CITY OF SALEM STD. DWG. 306B.
- 4 BIKE RACK. SEE ARCHITECTURAL PLANS FOR MORE DETAIL.
- 5 INSTALL NEW SWINGING GATE. SEE ARCHITECTURAL PLANS FOR MORE DETAIL.
- 6 INSTALL FENCE. SEE ARCHITECTURAL PLANS FOR MORE DETAIL.
- 7 CONSTRUCT STAIRWAY. SEE ARCHITECTURAL PLANS FOR MORE DETAIL.
- 8 RESTORE DISTURBED LANDSCAPE AREA. INSTALL PERMANENT SEEDING USING A CITY-APPROVED MIX.

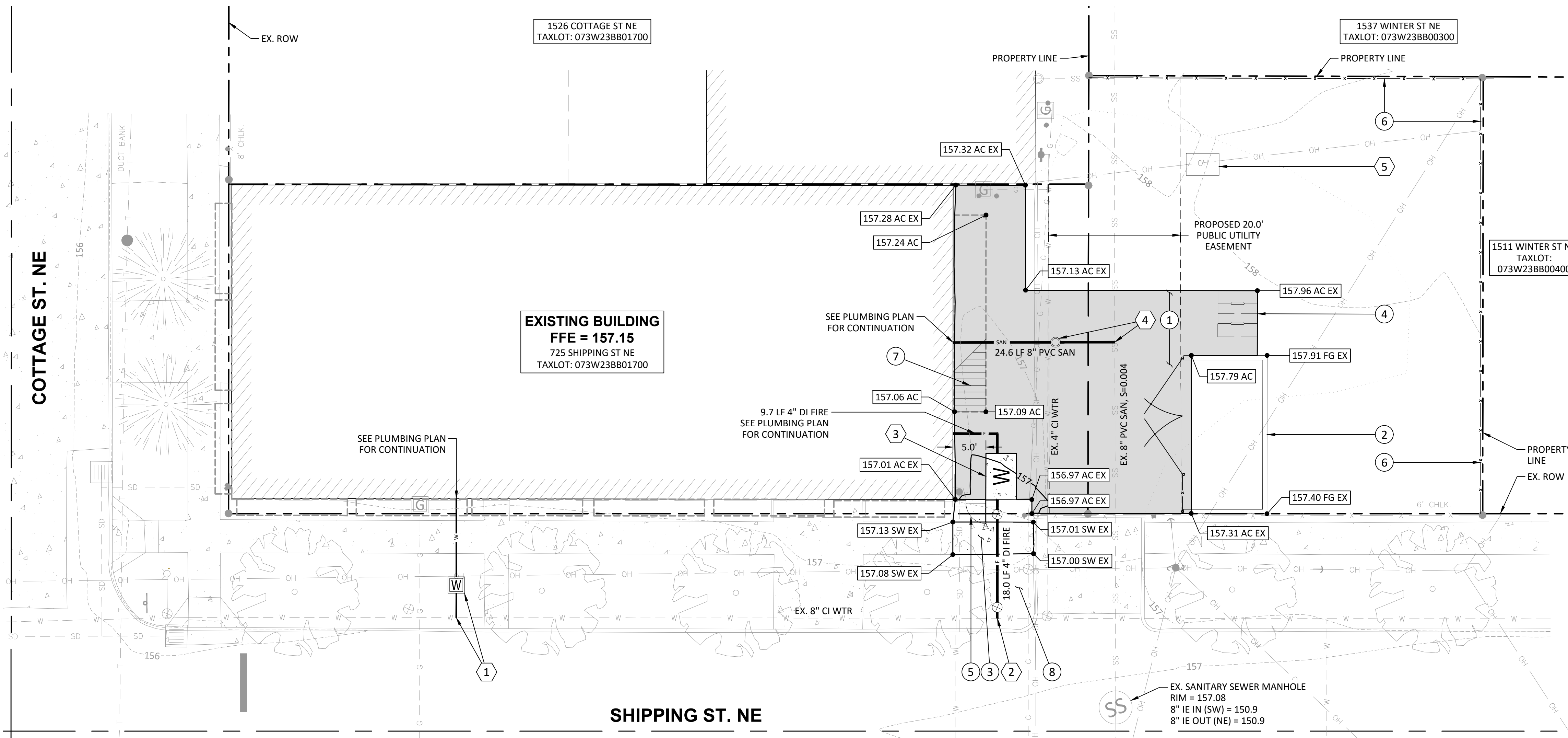
UTILITY KEYNOTES:

- 1 INSTALL 2" WATER SERVICE LINE WITH A 1 1/2" DOMESTIC WATER METER AND CONNECT TO EXISTING 8" C.I. WATERMAIN PER CITY OF SALEM STD. DWG. 419 AND 421. PIPE TRENCH, BEDDING AND BACKFILL PER CITY OF SALEM STD. DWGS. 601 AND 605.
- 2 INSTALL 4" FIRE SERVICE LINE AND CONNECT TO EXISTING 8" C.I. WATERMAIN WITH 8"x4" TAPPING TEE AND THRUST BLOCK AT MAIN. CONTRACTOR SHALL COORDINATE WITH CITY FORCES FOR INSTALLATION. SEE CITY OF SALEM STD. DWG. 400.A-400.C FOR VALVE DETAILS. PIPE TRENCH, BEDDING AND BACKFILL PER CITY OF SALEM STD. DWGS. 601 AND 605. SEE FIRE SERVICE PROFILE THIS SHEET.
- 3 INSTALL 4" DCDA IN OLDCASTLE VAULT MODEL NO. 577-WA OR APPROVED EQUAL. SEE DOUBLE CHECK DETECTOR ASSEMBLY DETAIL ON SHEET C3.0.
- 4 INSTALL 4" SANITARY SEWER SERVICE WITH TWO-WAY CLEANOUT AND CONNECT TO EXISTING PUBLIC 8" SEWER MAIN PER CITY OF SALEM STD. DWG. 106. PIPE TRENCH, BEDDING AND BACKFILL PER CITY OF SALEM STD. DWGS. 601 AND 605.
- 5 RELOCATE EXISTING POWER SERVICE TO NEW TRANSFORMER. COORDINATE WITH POWER COMPANY FOR RELOCATION.



FIRE SERVICE PROFILE

SCALE: 1" = 10' (HORIZ.)
1" = 2' (VERT.)



LEGEND

- RIGHT-OF-WAY / PROPERTY LINE
- - - - - EXISTING CONTOUR (1')
- — — — — PROPOSED CONTOUR (1')
- ▭ EXISTING CONCRETE
- ▭ PROPOSED ASPHALT PAVEMENT
- ▭ PROPOSED CONCRETE
- — — — — PROPOSED SANITARY LINE
- — — — — PROPOSED SANITARY CLEANOUT
- — — — — PROPOSED FIRE LINE
- — — — — PROPOSED DOMESTIC WATER LINE
- ⊗ PROPOSED WATER VALVE
- ⊗ PROPOSED DOMESTIC WATER METER
- ⊗ PROPOSED DCDA VAULT
- EX EXISTING ASPHALT
- AC ASPHALT
- SW SIDEWALK
- FG FINISHED GROUND

SITE, GRADING & UTILITY PLAN
GLAZE - SHIPPING APARTMENTS
 SALEM, OREGON

Harper Houf Peterson Righellis Inc.
 ENGINEERS & PLANNERS
 LANDSCAPE ARCHITECTS & SURVEYORS
 530 Center Street NE, Suite 240, Salem, OR 97301
 phone: 503.365.1131 www.hhpri.com fax: 503.221.1171

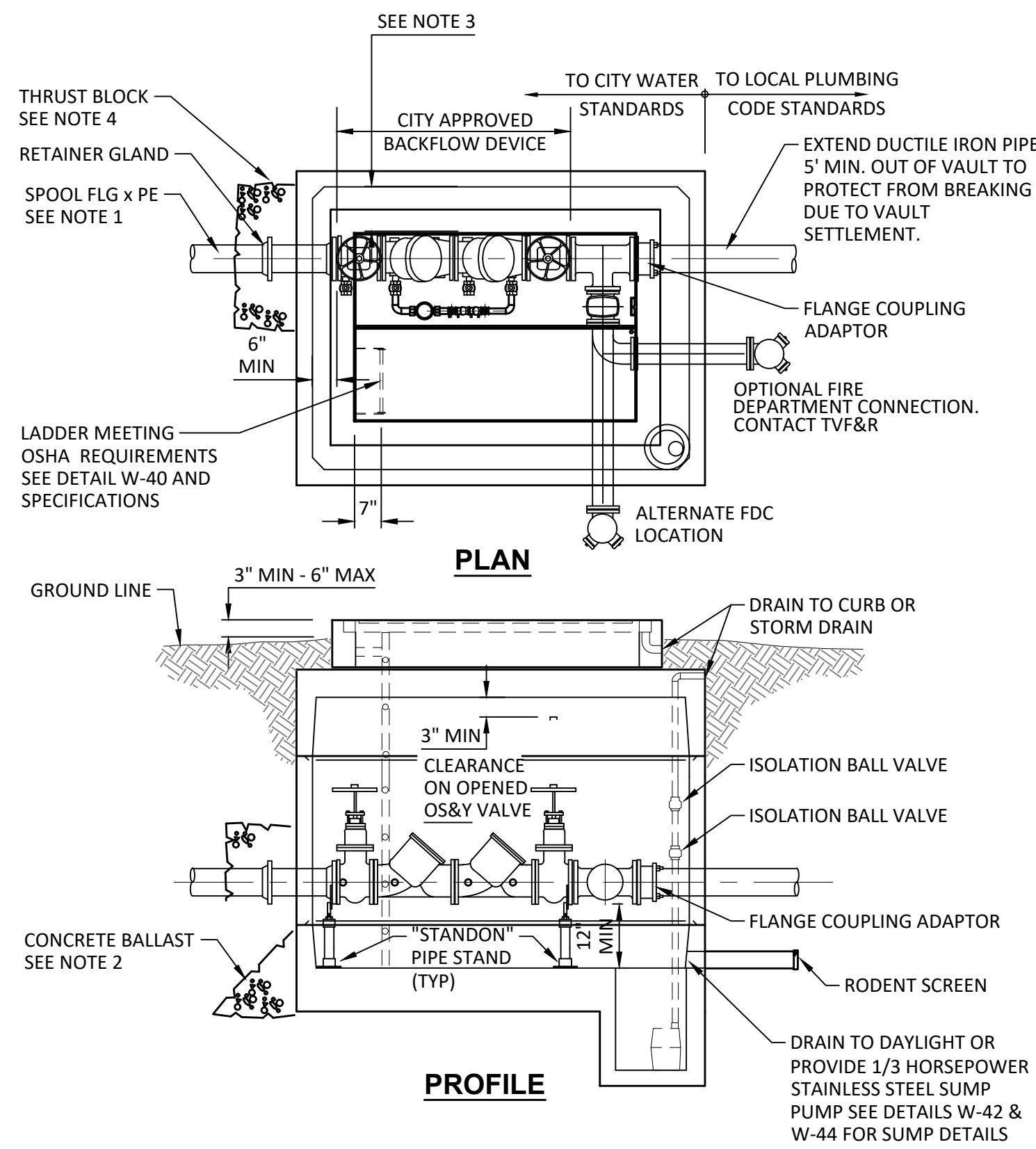
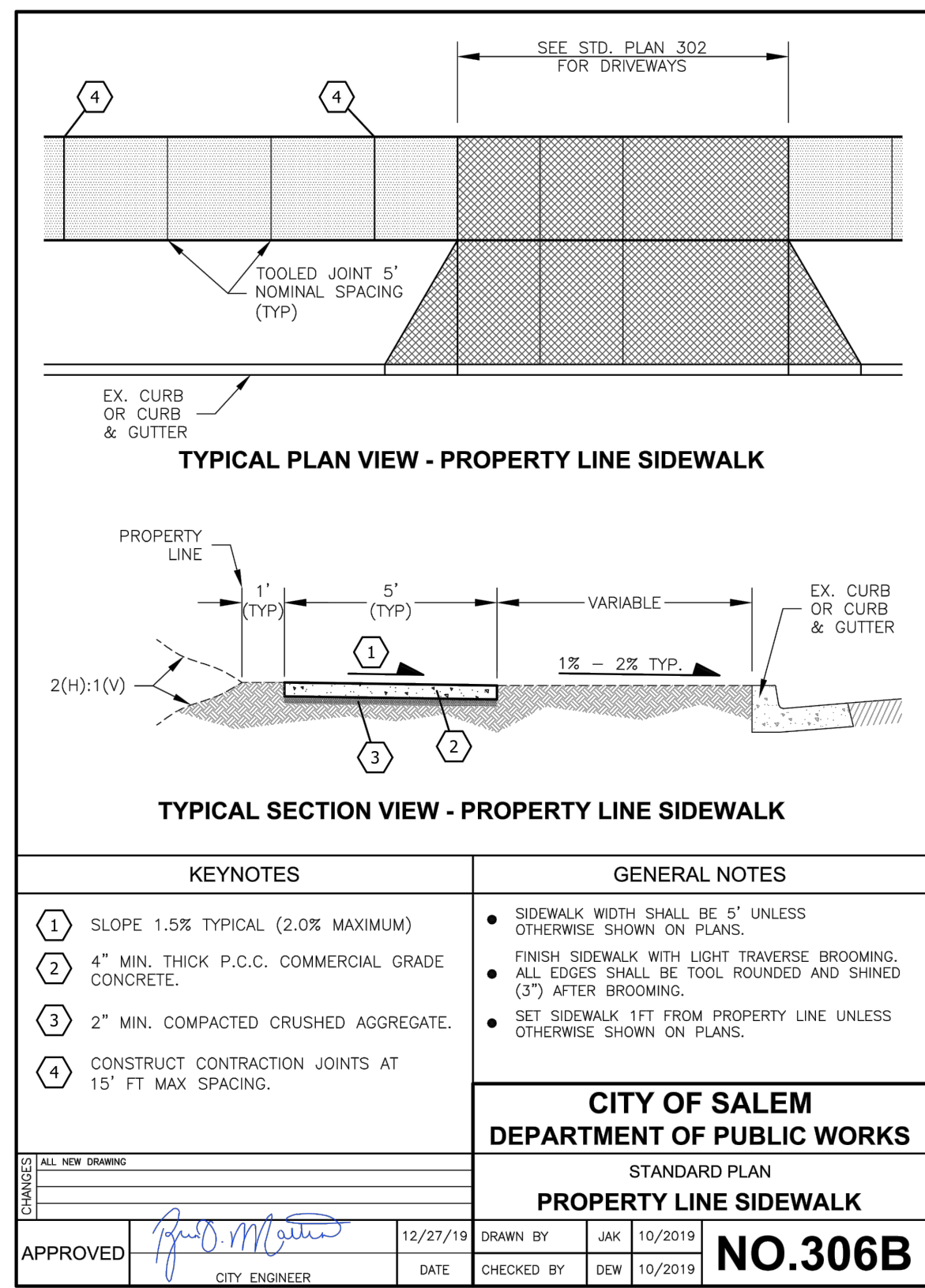
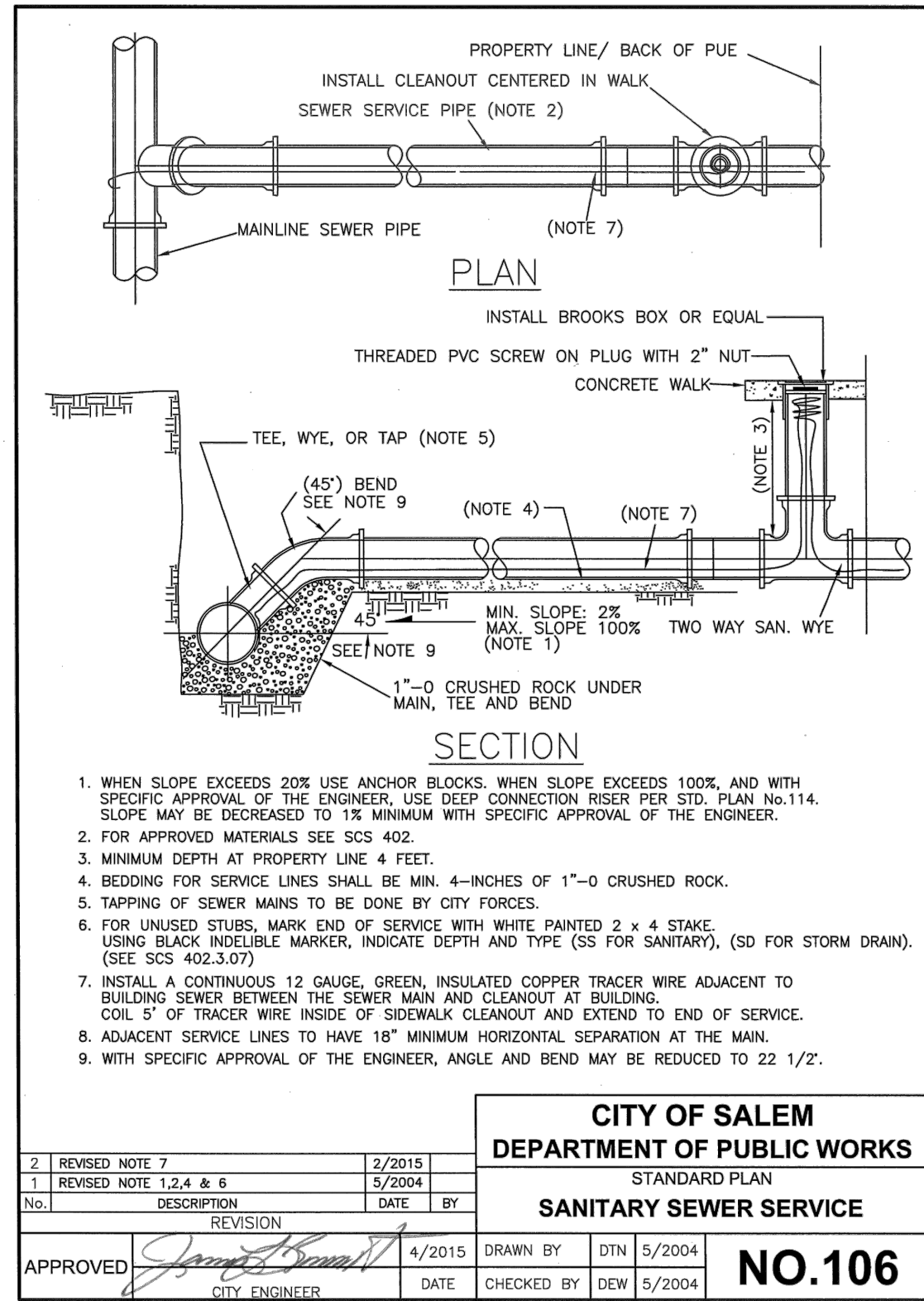
REGISTERED PROFESSIONAL ENGINEER
 REVIEW COPY
 NOT FOR CONSTRUCTION
 OREGON
 MAY 22, 2015
 RYAN MICHAEL MOSEBER

DESIGNED:	HHPR	DRAWN:	CJM	CHECKED:	RMM	DATE:	OCT 2022
-----------	------	--------	-----	----------	-----	-------	----------

DATE	NO.	R	E	V	I	S	I	O	N	S
------	-----	---	---	---	---	---	---	---	---	---

SHEET NO.
C2.0
 JOB NO.
 ACO-01

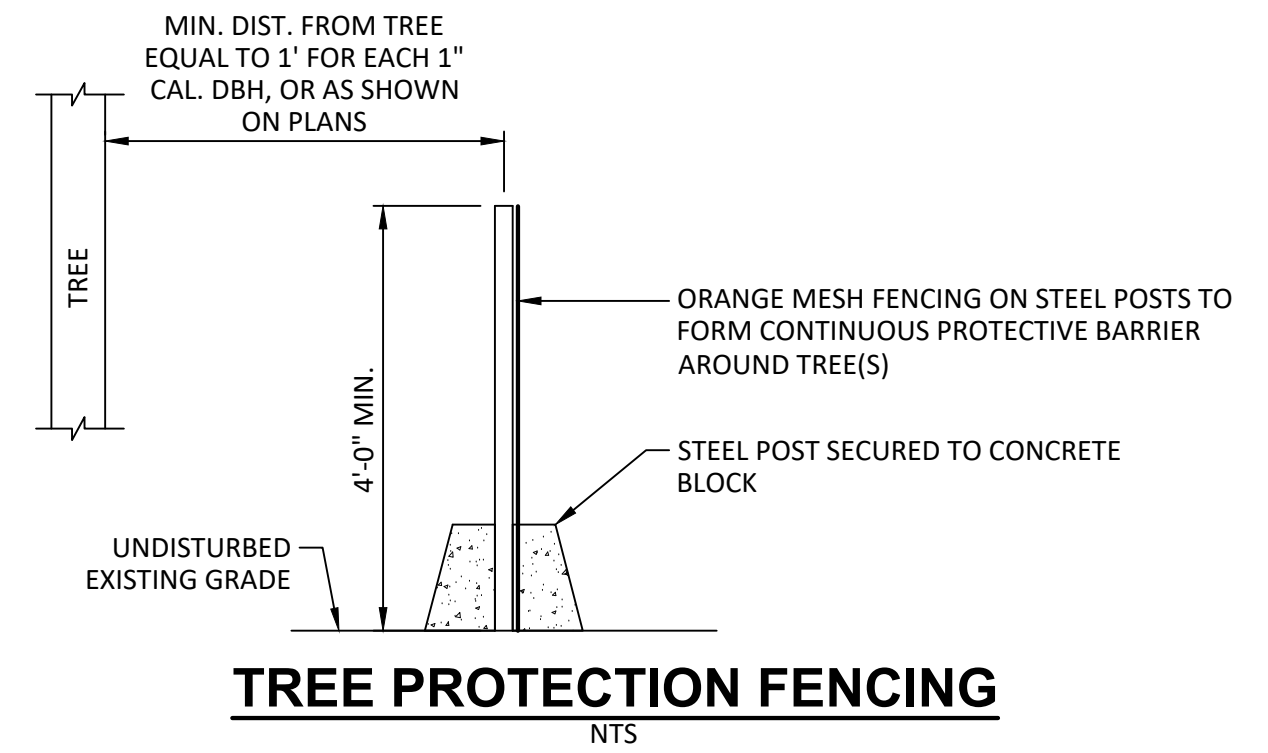
P:\04-Salem\ACO (AC-Coi)\ACO-01 (Glaze-Shipping Apartments)\AC001-DWGSSheets\AC001_C2.0 - Site, Grading & Utility Plan.dwg



SIZE	UTILITY VAULT WITH FDC *	UTILITY VAULT W/O FDC *	BILCO DOOR *
3	577-WA	577-WA	J-5AL
4	577-WA	577-WA	J-5AL
6	676-WA	676-WA	J-5AL
8	687-WA	687-WA	JD-3AL
10	5106-LA	5106-LA	JD-3AL

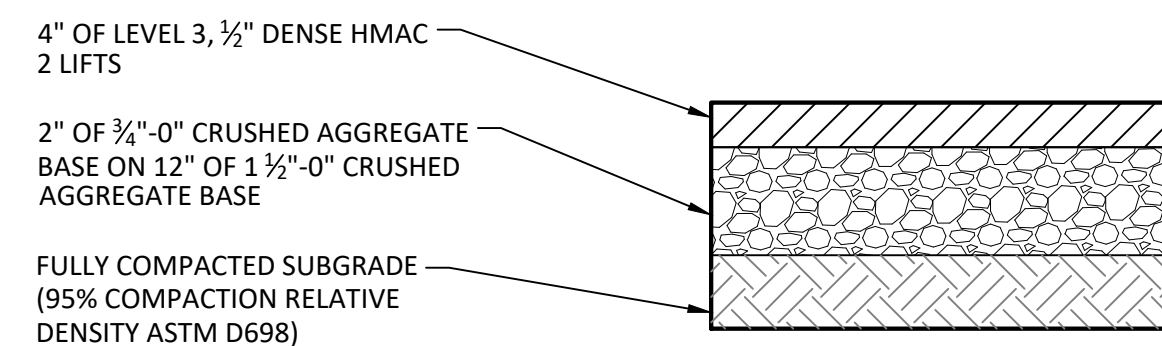
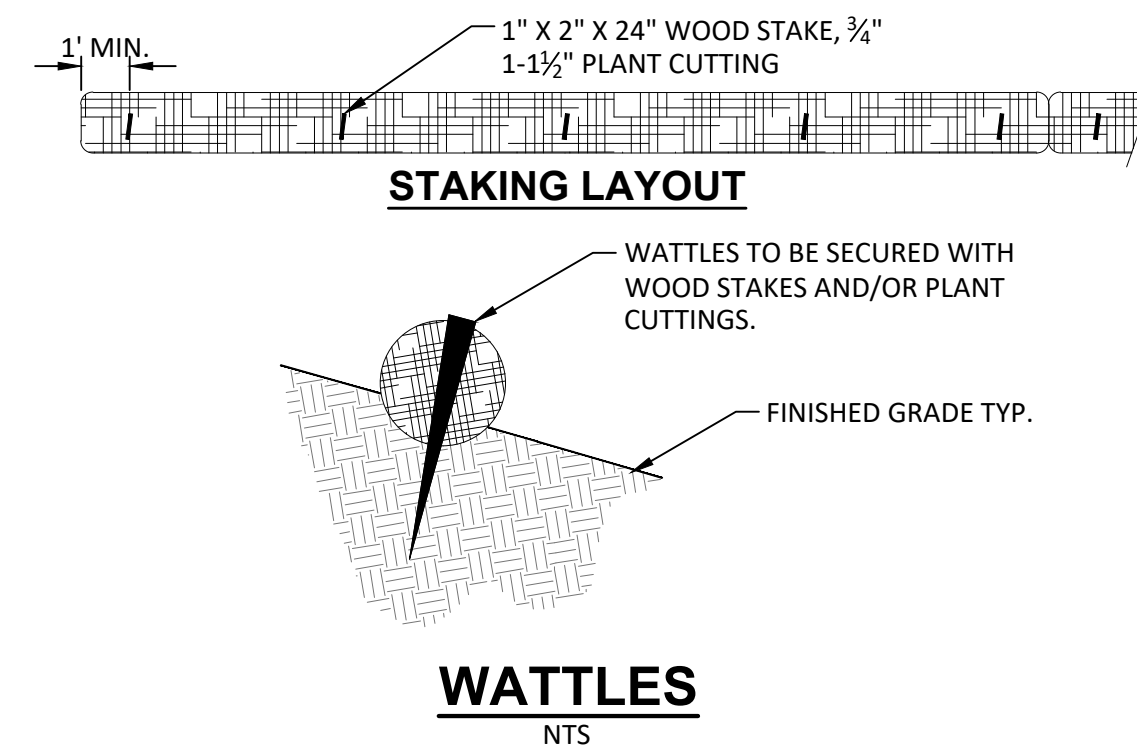
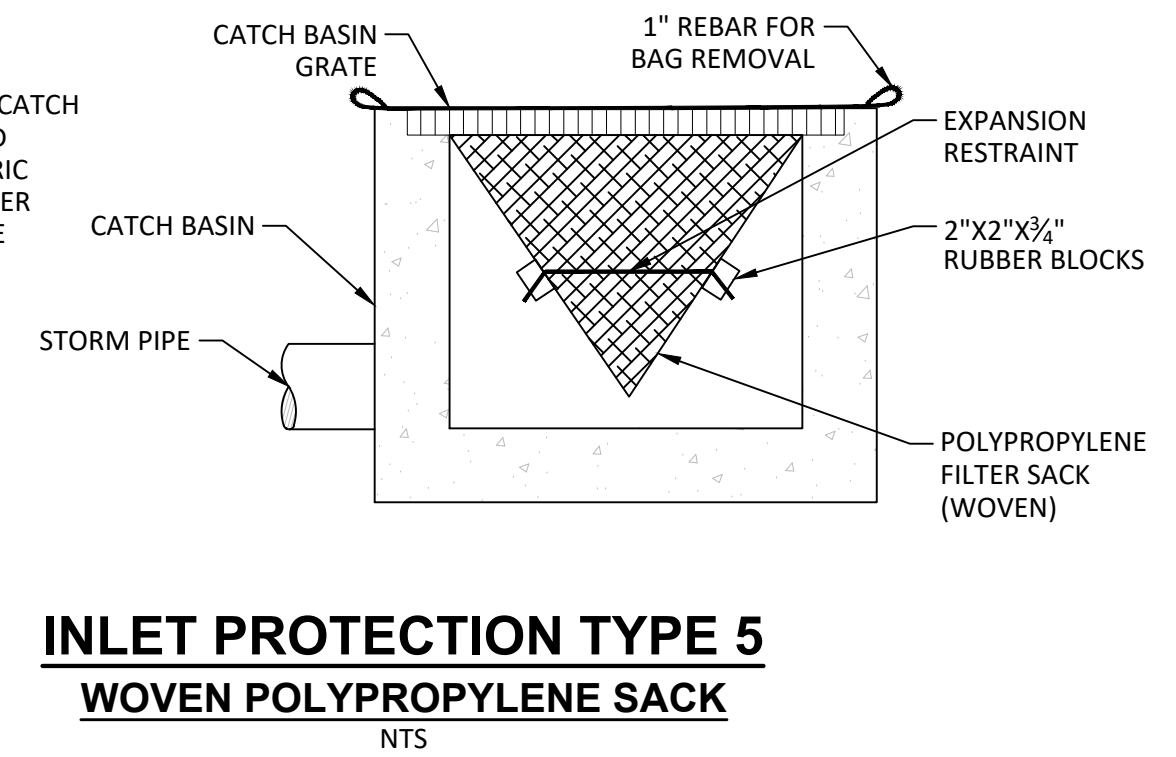
* "OR EQUAL" APPROVED BY CITY ENGINEER

DOUBLE CHECK DETECTOR ASSEMBLY
NTS



NOTE:

- RECESSED CURB INLET CATCH BASINS MUST BE BLOCKED WHEN USING FILTER FABRIC INLET SACKS. SIZE OF FILTER FABRIC INLET SACKS TO BE DETERMINED BY MANUFACTURER.



DETAILS
GLAZE - SHIPPING APARTMENTS
SALEM, OREGON

Harper
Houf Peterson
Righellis Inc.
ENGINEERS & PLANNERS
LANDSCAPE ARCHITECTS & SURVEYORS
530 Center Street NE, Suite 240, Salem, OR 97301
phone: 503.365.1131 www.hpr.com

REGISTERED PROFESSIONAL
ENGINEER
76295PR
REVIEW COPY
NOT FOR CONSTRUCTION
OREGON
MAY 22, 2015
RYAN MICHAEL MOSHER

EXPIRES: 12/31/22

DESIGNED:	HHPR	CJM	RMM	DATE:	OCT 2022
DRAWN:					
CHECKED:					
DATE:					

R E V I S I O N S

SHEET NO.
C3.0
JOB NO.
ACO-01

P:\04-Salem\ACO (AC-Co)\ACO-01 (Glaze-Shipping Apartments)\ACO01-DWGSSheets\ACO01-C3.0-Details.dwg

GENERAL NOTES

- CENTER VALVE BOX ASSEMBLY AND ALIGN VERTICALLY OVER VALVE OPERATING NUT.
- ADJUST VALVE BOX TO FINISH PAVING GRADE.
- PVC PIPE SHALL BE ONE CONTINUOUS PIECE WITH BELL END ORIENTED DOWNWARD, OR ALTERNATIVELY, GLUE PVC REDUCER ON PLAN END OF PIPE.

KEYNOTES

- PROVIDE VALVE OPERATOR EXTENSION WHEN OPERATING NUT DEPTH EXCEEDS 48-INCHES. SEE STD. PLAN 400.C.
- CONSTRUCT 6-INCH THICK P.C.C. COLLAR IF VALVE IS IN UNPAVED AREA SUBJECT TO VEHICULAR TRAFFIC.

CITY OF SALEM DEPARTMENT OF PUBLIC WORKS

STANDARD PLAN
WATER VALVE BOX ASSEMBLY

APPROVED: *Karl O. Shultz* 9-11-16
CITY ENGINEER

DRAWN BY: JAK 2016
CHECKED BY: DEW 2016

NO. 400.A

KEYNOTES

- LIFT POCKET 1" WIDE x 1 1/4" DEEP.

CITY OF SALEM DEPARTMENT OF PUBLIC WORKS

STANDARD PLAN
WATER VALVE BOX

APPROVED: *Karl O. Shultz* 9-11-16
CITY ENGINEER

DRAWN BY: JAK 2016
CHECKED BY: DEW 2016

NO. 400.B

KEYNOTES

- 2"x2"x1/8"x2" LONG STEEL TUBE EXTEND TO 24"-36" FROM FINISH GRADE.
- 2"x2"x3/8" STEEL FLAT BAR.
- 1 1/2" SCHEDULE 40 STEEL PIPE (1.90 OD x .145 WALL).
- 3/8" BOLT WITH LOCK NUT.
- 2 1/2"x2 1/2"x3/16"x3 1/2" LONG STEEL TUBE.
- ROCK GUARD 1/8" STEEL PLATE WELDED TO STEEL PIPE. INSTALL 6" MAX BELOW OPERATOR NUT. ROCK GUARD DIAMETER SHALL BE 5 1/2". SECONDARY ROCK GUARD IS REQUIRED IF DISTANCE FROM UPPER ROCK GUARD TO VALVE NUT EXCEEDS 72". INSTALL SECONDARY ROCK GUARD HALF WAY BETWEEN UPPER GUARD AND VALVE NUT.

CITY OF SALEM DEPARTMENT OF PUBLIC WORKS

STANDARD PLAN
WATER VALVE OPERATOR EXTENSION

APPROVED: *Karl O. Shultz* 9-11-16
CITY ENGINEER

DRAWN BY: JAK 2016
CHECKED BY: DEW 2016

NO. 400.C

(HORIZONTAL) BEARING AREA OF THRUST BLOCKS IN SQUARE FEET

FITTING SIZE	TEE, WYE, PLUGGED CROSS	STRADDLE BLOCK	90° BEND PLUGGED CROSS	TEE PLUGGED ON RUN		45° BEND	22-1/2° BEND	11-1/4° BEND
				A-1	A-2			
4	1.0	1.6	2.0	1.9	1.4	1.0	---	---
6	2.1	3.7	4.0	4.3	3.0	1.6	1.0	---
8	3.8	6.5	6.8	7.6	5.4	2.9	1.5	1.0
10	5.9	10.2	10.3	11.8	8.4	4.6	2.4	1.2
12	8.5	14.7	14.5	17.0	12.0	6.6	3.4	1.7
14	11.5	---	19.5	23.0	16.3	8.9	4.6	2.3
16	15.0	26.1	25.3	30.0	21.3	13.7	7.0	3.5
18	19.0	---	31.7	38.0	27.0	17.2	8.8	4.4
20	23.5	40.8	38.9	47.0	33.3	21.1	10.8	5.4
24	34.0	58.8	55.5	68.0	48.0	28.2	13.6	6.8

NOTES:

- ABOVE BEARING AREAS BASED ON TEST PRESSURE OF 150 PSI AND AN ALLOWABLE SOIL BEARING STRESS OF 2000 POUNDS PER SQUARE FOOT. TO COMPUTE BEARING AREAS FOR DIFFERENT TEST PRESSURES AND SOIL BEARING STRESSES, USE THE FOLLOWING EQUATION:
BEARING AREA = (TEST PRESSURE / 150) x (2000 / SOIL BEARING STRESS) x (TABLE VALUE)
- ABOVE VOLUMES BASED ON TEST PRESSURE OF 150 PSI AND THE WEIGHT OF CONCRETE = 4050 POUNDS PER CUBIC YARD. TO COMPUTE FOR DIFFERENT TEST PRESSURES, USE THE FOLLOWING EQUATION:
VOLUME = (TEST PRESSURE / 150) x (TABLE VALUE)

NOTES:

- CONCRETE BLOCKING TO BE POURED AGAINST UNDISTURBED EARTH.
- ALL CONCRETE TO BE CLASS 2400 MINIMUM.
- INSTALL ISOLATION MATERIAL BETWEEN PIPE AND/OR FITTINGS BEFORE POURING CONCRETE BLOCKING.
- CONCRETE SHALL BE KEPT CLEAR OF ALL JOINTS AND ACCESSORIES.
- SEE STANDARD PLAN NO. 402 FOR VERTICAL BEND ANCHOR BLOCK DETAILS.
- SEE STANDARD PLAN NO. 403 AND 404 FOR TIED BACK THRUST BLOCK DETAILS.
- MAY NOT WORK OUT FOR ALL FITTING SIZES - CONFIRM USE OF THIS BLOCKING CONFIGURATION WITH ENGINEER.

Approved: *Karl O. Shultz* 9-15-99
City Engineer

CITY OF SALEM DEPARTMENT OF PUBLIC WORKS

STANDARD PLAN
HORIZONTAL THRUST BLOCKING

DRAWN BY: I.D.F.
CHECKED BY: R.W.L.

NO. 401

9-15-99

SVC. SIZE	DIM "a"	DIM "A"
1 1/2"	10"	18"
2"	15"	24"(MIN)

NOTES

- NO METER ON PRIVATE PROPERTY WITHOUT EASEMENT.
- METER TO BE INSTALLED BY CITY FORCES.
- SERVICE TAPS TO HAVE A MINIMUM OF 18" SPACING AND BE A MINIMUM OF 18" FROM ANY JOINT OR FITTING.
- TWO STACKED BOXES ARE ACCEPTABLE. IF TWO BOXES ARE STACKED, THE UPPER BOX SHALL NOT HAVE PIPE ENTRY PORTS CUT OUT.
- SEE SCS 504 FOR SPECIFICATIONS.
- CORPORATION COUPLING IS A REQUIRED FITTING. USE 0°-90° BEND AS FIELD CONDITIONS REQUIRE.

CITY OF SALEM DEPARTMENT OF PUBLIC WORKS

STANDARD PLAN
1 1/2" & 2" DOMESTIC WATER SERVICE INSTALLATION

APPROVED: *Karl O. Shultz* 3-1-02
City Engineer

DRAWN BY: I.D.F.
CHECKED BY: D.W.

NO. 419

NOTES

- SEE SCS 504 FOR LID SPECIFICATIONS.

CITY OF SALEM DEPARTMENT OF PUBLIC WORKS

STANDARD PLAN
AUTOMATIC METER READER LID

APPROVED: *Karl O. Shultz* 5-18-04
City Engineer

DRAWN BY: D.T.N.
CHECKED BY: DEW

NO. 421

TRENCH PAY WIDTH

SIZE OF PIPE	PAY WIDTH OF TRENCH
6" THRU 8"	2.5 FT.
10" THRU 24"	OUTSIDE DIAMETER PLUS 18"
27" THRU 36"	OUTSIDE DIAMETER PLUS 24"
42" AND LARGER	OUTSIDE DIAMETER PLUS 30"

CITY OF SALEM DEPARTMENT OF PUBLIC WORKS

STANDARD PLAN
PIPE TRENCH

APPROVED: *Karl O. Shultz* 9-15-99
City Engineer

DRAWN BY: GS
CHECKED BY: D.W.

NO. 601

GENERAL NOTES

- WHERE DIRECTED BY THE ENGINEER GRANULAR TRENCH STABILIZATION SHALL BE PLACED PRIOR TO PLACEMENT OF THE BEDDING. SIZE AND DEPTH ARE DEPENDENT ON SOIL CONDITIONS.
- FOR ROCK OR OTHER INCOMPRESSIBLE MATERIALS, THE TRENCH SHALL BE UNDERCUTTED A MINIMUM OF 6" AND REFILLED WITH GRANULAR MATERIAL AS DIRECTED BY THE ENGINEER.
- BEDDING AND BACKFILL MATERIALS IN THE PIPE ZONE SHALL BE COMPACTED AS SPECIFIED PRIOR TO BACKFILLING THE REMAINDER OF THE TRENCH.
- WHERE DIRECTED BY THE ENGINEER USE 1"-0 CRUSHED ROCK FOR ENTIRE PIPE ZONE. (SEE SCS 204.3.10)

LEGEND

D	d(min)
12" & SMALLER	6"
15" to 36"	8"
42" & LARGER	10"

CITY OF SALEM DEPARTMENT OF PUBLIC WORKS

STANDARD PLAN
PIPE ZONE

APPROVED: *Karl O. Shultz* 2-23-10
CITY ENGINEER

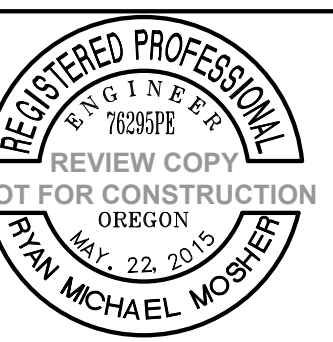
DRAWN BY: JAK 1/2016
CHECKED BY: JPK 1/2016

NO. 605

P:\04-Salem\ACO-01 (Glaze-Shipping Apartments)\ACO01-DWGSSheets\ACO01_C3.0 - Details.dwg

DETAILS
GLAZE - SHIPPING APARTMENTS
SALEM, OREGON

Harper
Hoof Peterson
Righellis Inc.
ENGINEERS & PLANNERS
LANDSCAPE ARCHITECTS & SURVEYORS
530 Center Street NE, Suite 240, Salem, OR 97301
phone: 503.365.1131 www.hphpr.com



EXPIRES: 12/31/22

DESIGNED:	HHPR	DRAWN:	CJM	CHECKED:	RMM	DATE:	OCT 2022

DATE	NO.	DESCRIPTION

SHEET NO.
C3.1

JOB NO.
ACO-01