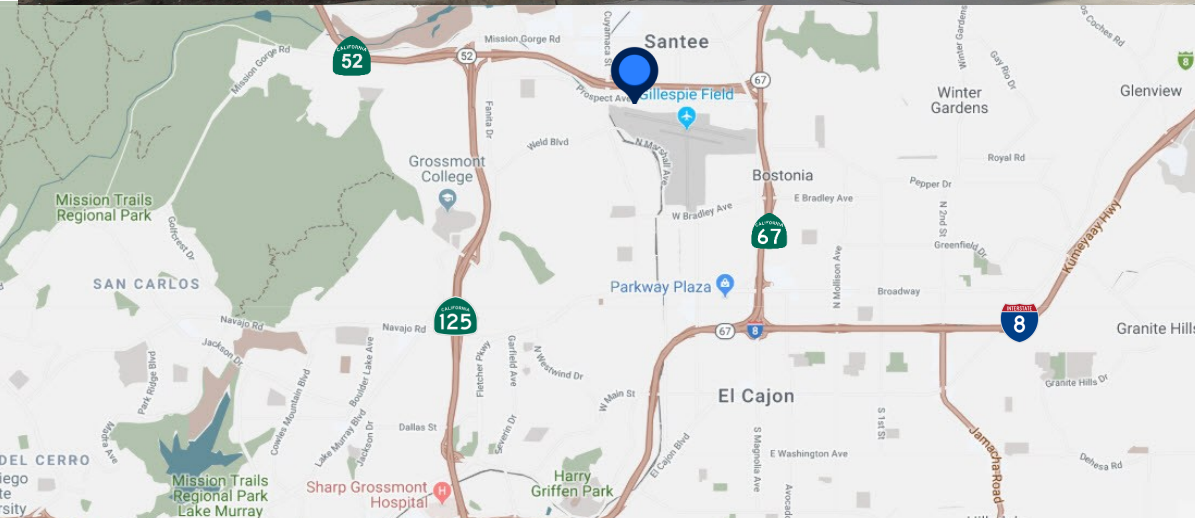


FOR LEASE

End Cap Industrial/Flex Suite

10027-10039 PROSPECT AVE, SANTEE, CA 92071



Available

10039-A Prospect Ave: ± 3,997 SF Industrial/Flex Suite

Property Features

- Located Near Highway 52 & 67 Interchange
- City of Santee General Industrial Zoning (IG)
- Fire Sprinklers

Nick Mane | Lic. 01939391
Director - Sales & Leasing
Tel (760) 840-7140
Nick@PacificCoastCommercial.com

Jasmine Golia | Lic. 02131001
Sales & Leasing Associate
Tel (858) 337-7311
Jasmine@PacificCoastCommercial.com

Pacific Coast Commercial | Lic. 01209930
10721 Trenea Street, Suite 200
San Diego, CA 92131
Tel (619) 469-3600
www.PacificCoastCommercial.com

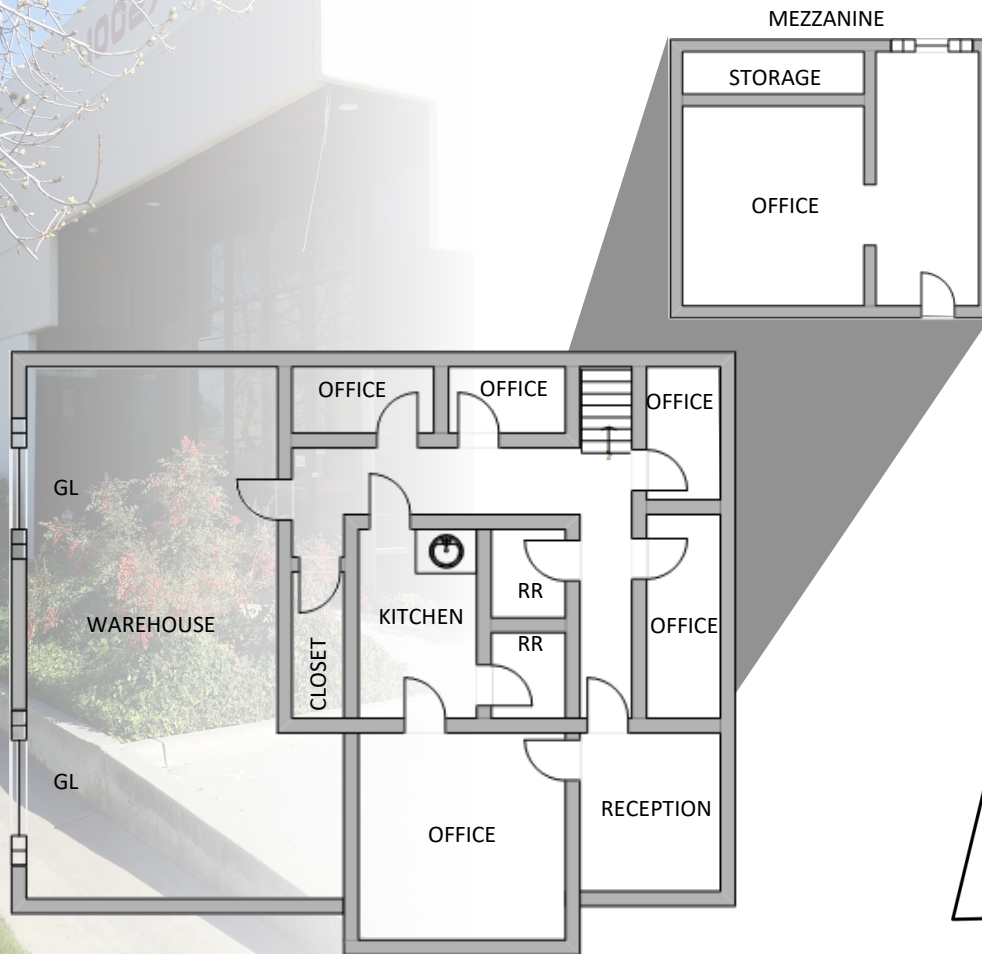


Disclaimer: The information contained herein has been given to us by the owner of the property or other sources we deem reliable, we have no reason to doubt its accuracy, but we do not guarantee it. All information, including zoning and use, should be verified prior to transaction.

FOR LEASE

End Cap Industrial/Flex Suite

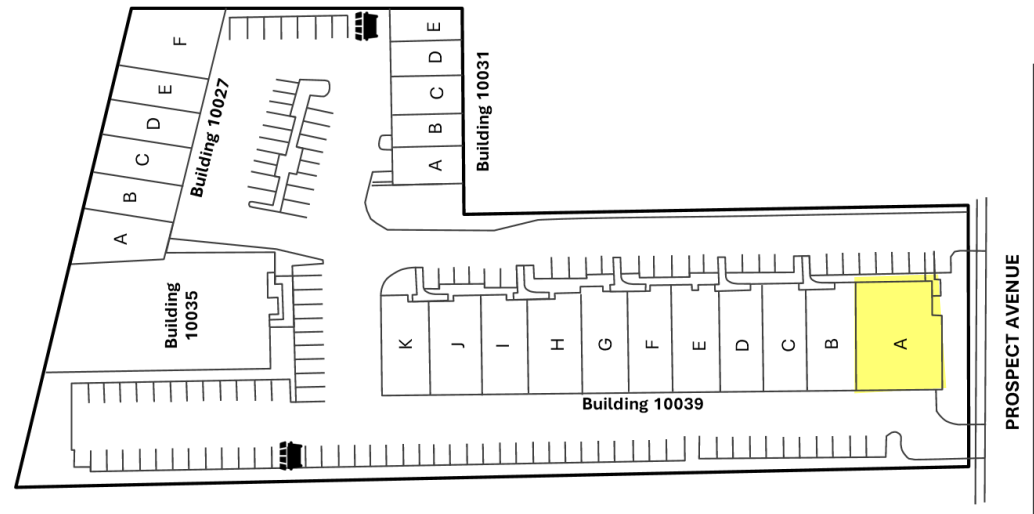
10027-10039 PROSPECT AVE, SANTEE, CA 92071



10039-A Prospect Ave

- ± 3,997 SF Industrial/Flex Suite
- 2 Restrooms, 5 Private Offices, Reception/Lobby, Kitchen, Upstairs Office, Storage
- 2' - 12' x 14' Grade Level Roll Up Doors
- End Cap Space with Street Frontage
- Availability: Call Agent for Details
- Lease Rate: \$7,300 Per Month - Industrial Gross

SITE PLAN



Floor Plan and Site Plan are not to scale; for reference purposes only.

Nick Mane | Lic. 01939391
Director - Sales & Leasing
Tel (760) 840-7140
Nick@PacificCoastCommercial.com

Jasmine Golia | Lic. 02131001
Sales & Leasing Associate
Tel (858) 337-7311
Jasmine@PacificCoastCommercial.com

Pacific Coast Commercial | Lic. 01209930
10721 Treana Street, Suite 200
San Diego, CA 92131
Tel (619) 469-3600
www.PacificCoastCommercial.com



Disclaimer: The information contained herein has been given to us by the owner of the property or other sources we deem reliable, we have no reason to doubt its accuracy, but we do not guarantee it. All information, including zoning and use, should be verified prior to transaction.