

*West Pasco Industrial Park*  
*Warehouse/Office Unit*  
2422 Destiny Way, Odessa, FL 33556

**BERKSHIRE  
HATHAWAY** | FLORIDA  
HOMESERVICES | PROPERTIES  
GROUP

COMMERCIAL DIVISION



***For Lease***

- **Located in West Pasco Industrial Park**
- **3,300± SF (1,176± SF Office/2,124± SF Warehouse)**
- **3 Private Offices/Breakroom/Conference Room/Reception**
- **Two 12' x 14' Overhead Doors; Ceiling Heights 22'±**
- **Fenced in Lot w/ Outside Storage & 12 Parking Spaces**
- **Zoned I-1/Land Use IH**
- **Bonus Hardened Mezzanine (Not Included in the 3,300 SF)**
- **\$4,950 Per Month Modified Gross Plus Tax (\$18/SF)**
- **Landlord Pays RE Taxes, Building Ins., Grounds Maint. & Trash**

**For More Information  
Contact:**

**RENEE' DYER, CCIM, ALC**  
Executive Associate  
(727) 460-4901  
Renee@CREBossLadies.com

**JILL CARBONELLI, CCIM**  
Sr. Broker Associate  
(727) 639-5713  
Jill@CREBossLadies.com

Ranked Top 5 Teams Globally - Berkshire Hathaway Commercial Division 2018-2023

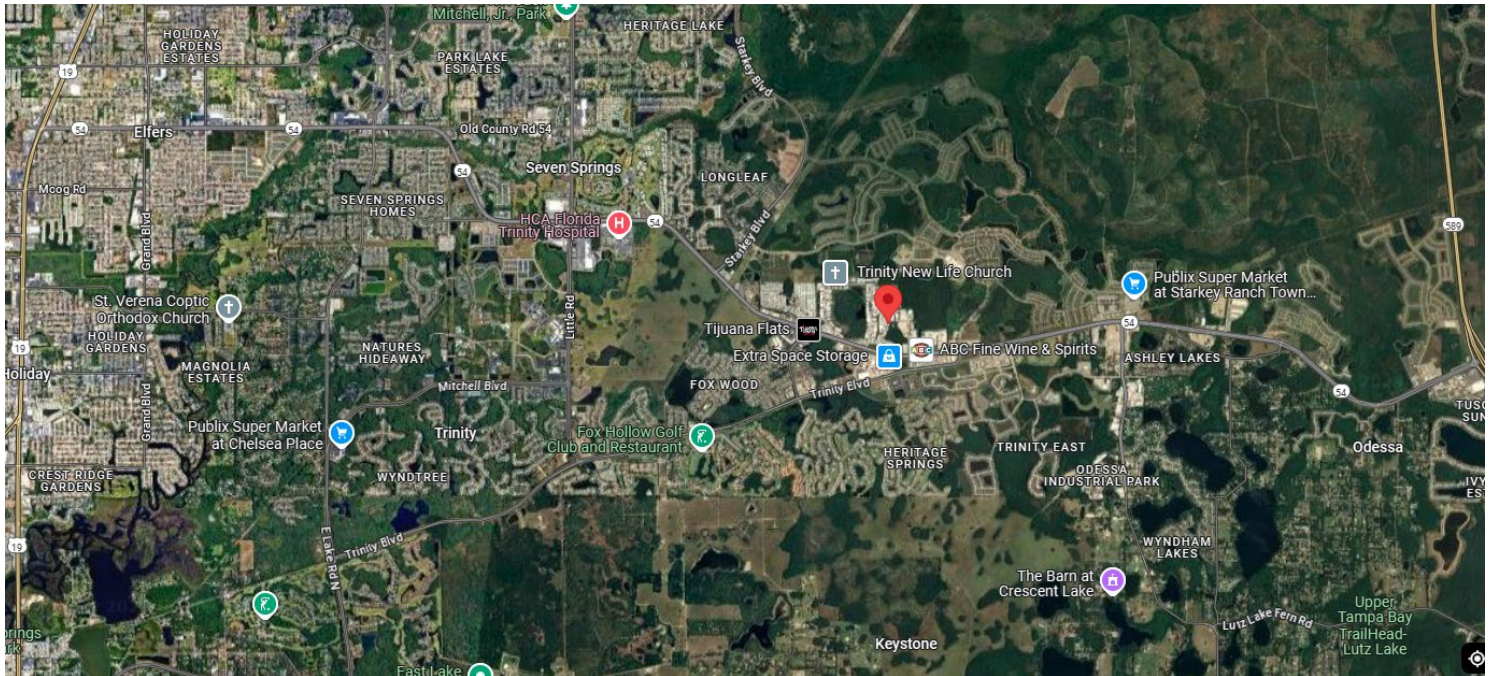
**Teamwork | Integrity | Passion | Excellence**

7916 Evolutions Way, Suite 210, Trinity, FL 34655 | 4950 West Kennedy Boulevard, Suite 300, Tampa, FL 33609

2300 4<sup>th</sup> Street N., St. Petersburg, FL 33704

CREBossLadies.com

*West Pasco Industrial Park  
Warehouse/Office Unit  
2422 Destiny Way, Odessa, FL 33556*



DEMOGRAPHICS BY MILE			
	1 MILE	3 MILES	5 MILES
Total Population	5,697	32,348	81,221
Avg. HH Income	\$142,611	\$142,896	\$127,782
Median Age	43	44	44.5
Total Households	2,495	12,614	32,410

DEMOGRAPHICS BY DRIVE TIME			
	5 MIN	10 MIN	15 MIN
Total Population	2,100	33,155	97,338
Avg. HH Income	\$144,334	\$129,828	\$111,969
Median Age	46.7	43	44.4
Total Households	983	13,014	38,995



**Renee' D. Dyer, CCIM, ALC**  
Executive Associate  
(727) 460-4901  
Renee@CREBossLadies.com



**CREBossLadies**  
DYER-CARBONELLI TEAM  
Commercial Real Estate Defined

*Ranked Top 5 Teams Globally  
Berkshire Hathaway Commercial  
2018-2023*



**Jill Carbonelli, CCIM**  
Sr. Broker Associate  
(727) 639-5713  
Jill@CREBossLadies.com

@CREBossLadies

@Dyer\_Carbonelli\_BossLadies

@CRE Boss Ladies

@CREBossLadies

This information is from sources deemed to be reliable. We are not responsible for misstatements of facts, errors or omissions, prior sale, change of price, and/or terms or withdrawal from the market without notice. Buyer should verify all information with its' own representatives as well as state and local agencies. Brokers, please note that a variable rate commission may exist on this offering that might result in a lower commission cost to the Seller if a Buyer's broker is not involved in the transaction. ©2024 BHH Affiliates, LLC. An independently owned and operated franchisee of BHH Affiliates, LLC. Berkshire Hathaway HomeServices and the Berkshire Hathaway HomeServices symbol are registered service marks of Columbia Insurance Company, a Berkshire Hathaway affiliate. Equal Housing Opportunity.