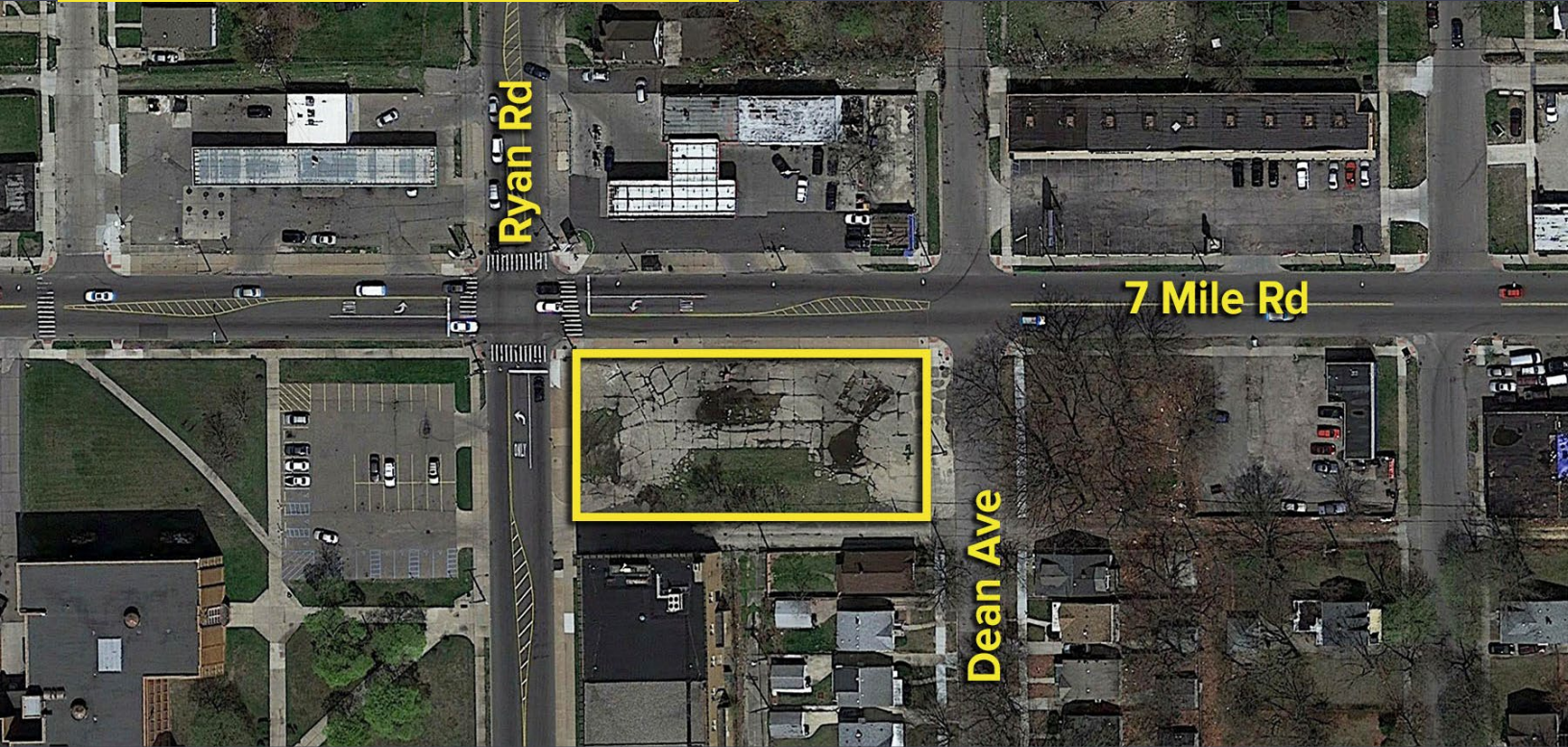


4120 SEVEN MILE ROAD
DETROIT, MICHIGAN

VACANT LAND FOR SALE
0.52 Acre Available



**SIGNATURE
ASSOCIATES**
KNOW SIGNATURE | KNOW RESULTS



PROPERTY FEATURES

- 0.52 acre available
- 225' x 100' lot dimensions
- Zoned B-4
- High traffic intersection
- Fully paved lot
- Sale price: \$149,900



For more information, please contact:

JOE STACK
(248) 359 0615
jstack@signatureassociates.com

MARVIN PETROUS
(248) 359 0647
mpetrous@signatureassociates.com

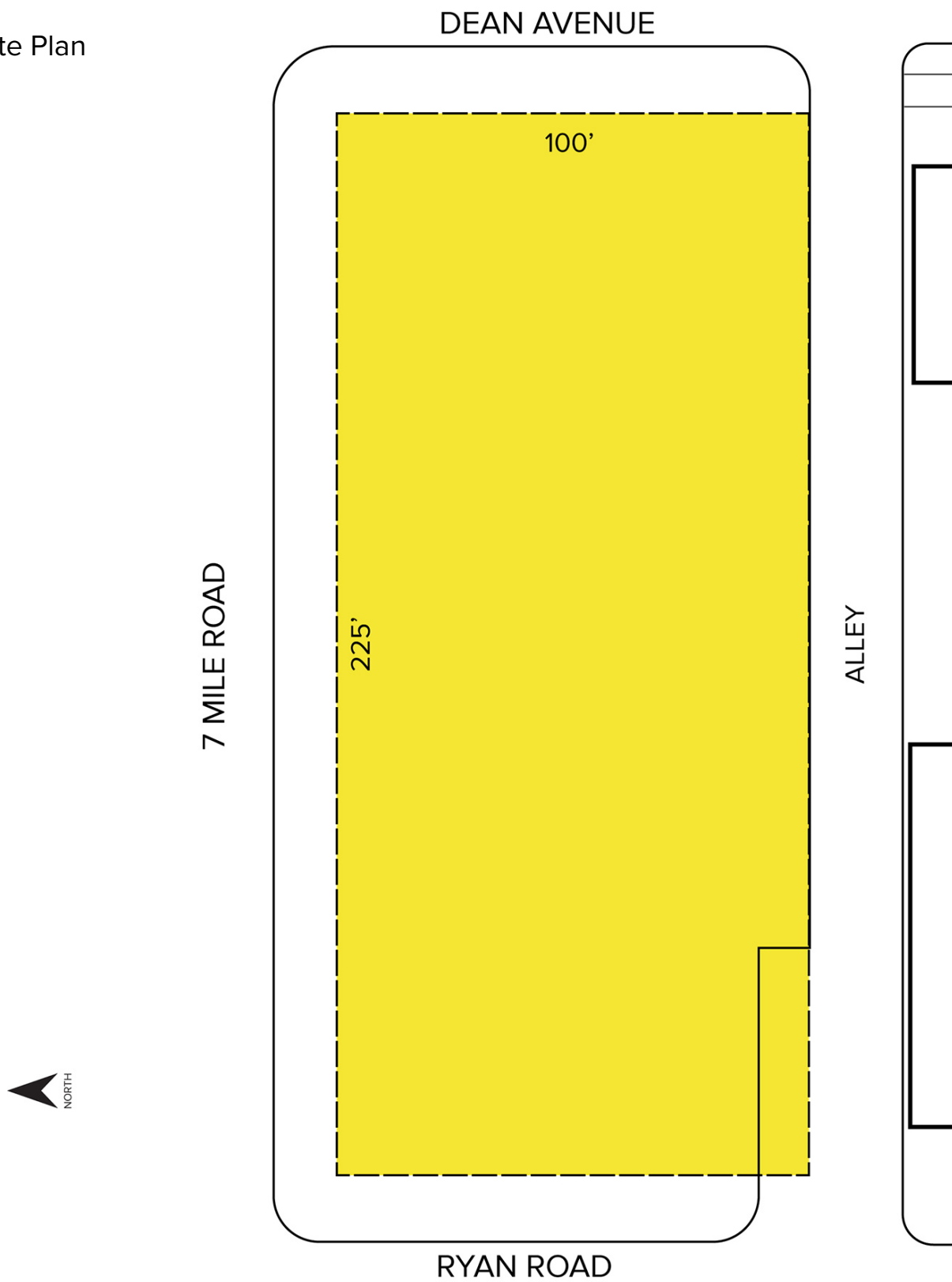
SIGNATURE ASSOCIATES
One Towne Square, Suite 1200
Southfield, MI 48076
www.signatureassociates.com

4120 Seven Mile Road – Detroit, Michigan

Land For Sale

0.52
Acre
AVAILABLE

Site Plan



For more information, please contact:

JOE STACK
(248) 359 0615
jstack@signatureassociates.com

MARVIN PETROUS
(248) 359 0647
mpetrous@signatureassociates.com

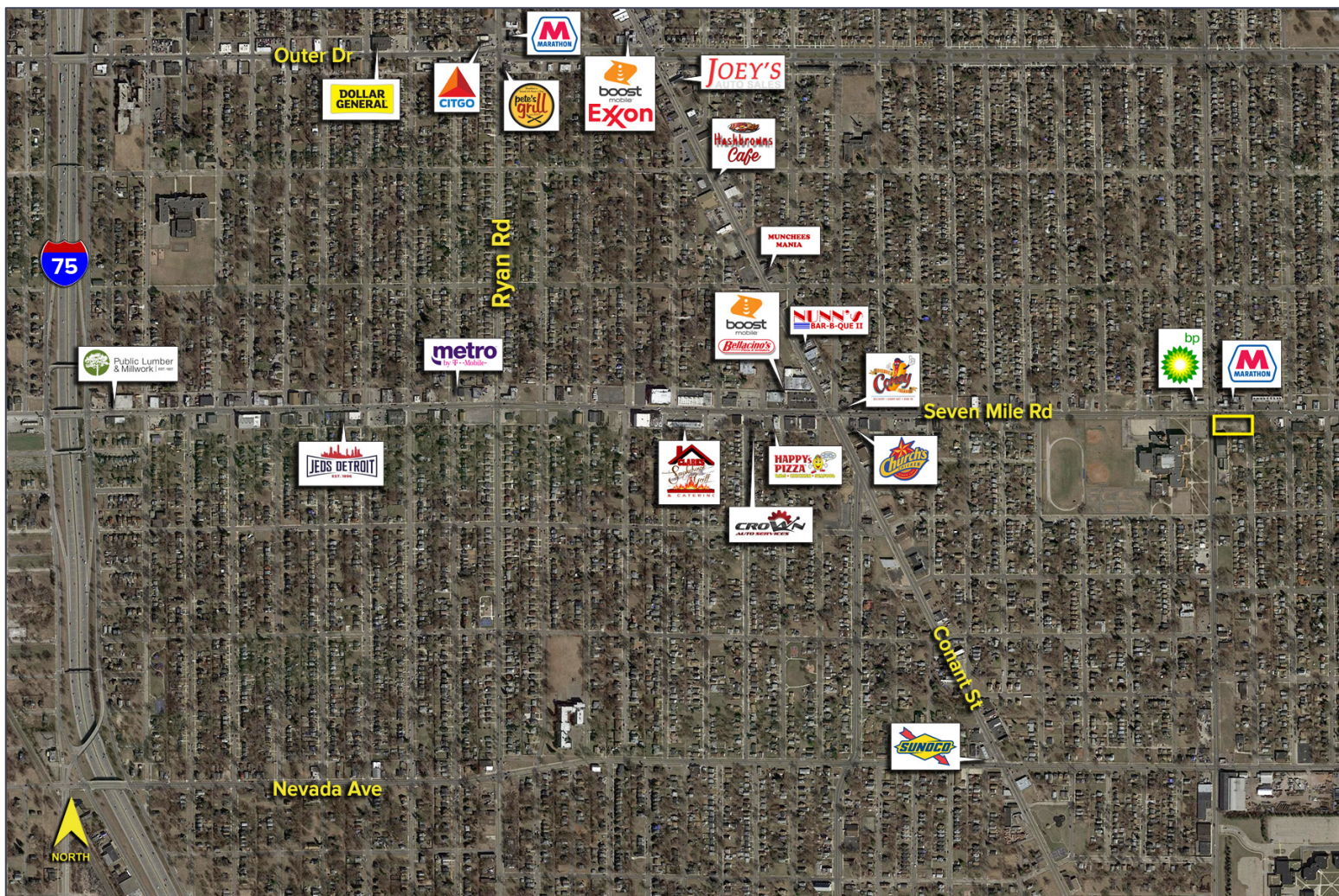
SIGNATURE ASSOCIATES
One Towne Square, Suite 1200
Southfield, MI 48076
www.signatureassociates.com

4120 Seven Mile Road – Detroit, Michigan

Land For Sale

0.52
Acre
AVAILABLE

Aerial



For more information, please contact:

JOE STACK

(248) 359 0615

jstack@signatureassociates.com

MARVIN PETROUS

(248) 359 0647

mpetrous@signatureassociates.com

SIGNATURE ASSOCIATES

One Towne Square, Suite 1200

Southfield, MI 48076

www.signatureassociates.com