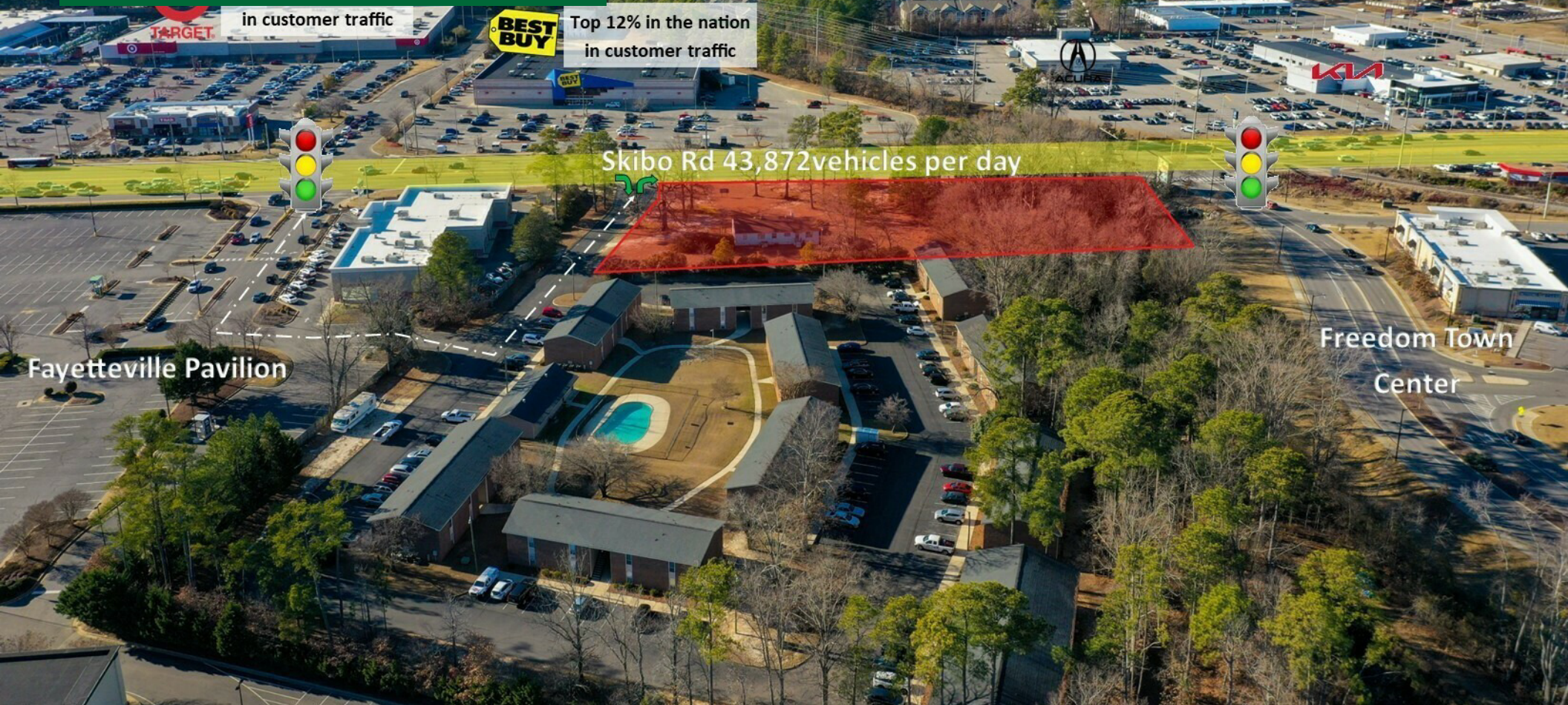


LAND FOR SALE

2.17 AC Retail Development Site

2037 Skibo Rd, Fayetteville, NC 28314



for more information

PATRICK MURRAY, CCIM, SIOR

Principal / Broker in Charge

O: 910.829.1617

C: 910.861.0449

patrick@grantmurrayre.com



Grant - Murray
REAL ESTATE, LLC
COMMERCIAL AND INVESTMENT BROKERAGE

150 N. McPherson Church Rd | Fayetteville, NC 28303 | www.grantmurrayre.com

PROPERTY OVERVIEW

Sale Price:	\$3,500,000
Acreage:	2.17 Acres
Zoning:	CC
Traffic Count:	43,872
Frontage:	453' on Skibo Rd

property description

2037 Skibo Road offers 453' of frontage along Fayetteville's dominant retail corridor, making it an exceptional opportunity for commercial development. Spanning over two acres and zoned CC, this site supports a wide range of retail, service, and hospitality uses. The property is adjacent to national anchors including Target, Best Buy, and Home Depot, creating strong synergies for both customer traffic and visibility. Its scale, zoning, and visibility offer significant appeal for restaurant operators, developers, or national retailers aiming to establish a presence in one of the region's most active corridors. With infrastructure and consumer traffic already in place, the parcel delivers both immediate utility and long-term development upside in a proven retail environment. Located in the heart of Fayetteville's high-performing commercial zone, the property sees daily traffic counts exceeding 43,872 vehicles and benefits from a robust daytime population of 167,904 within a five-mile radius. The surrounding area is home to Freedom Town Center and Cross Creek Mall, with a dense mix of national tenants and dining options that continue to attract both local and regional foot traffic. The five-mile trade area reports an average household income of \$91,023 and a population of 154,503, reflecting strong consumer spending capacity. With seamless access to major arterials and proximity to Fort Bragg, this corridor



for more information

PATRICK MURRAY, CCIM, SIOR

Principal / Broker in Charge

O: 910.829.1617

C: 910.861.0449

patrick@grantmurrayre.com



Grant - Murray
REAL ESTATE, LLC
COMMERCIAL AND INVESTMENT BROKERAGE

150 N. McPherson Church Rd | Fayetteville, NC 28303 | www.grantmurrayre.com



for more information

PATRICK MURRAY, CCIM, SIOR

Principal / Broker in Charge

O: 910.829.1617

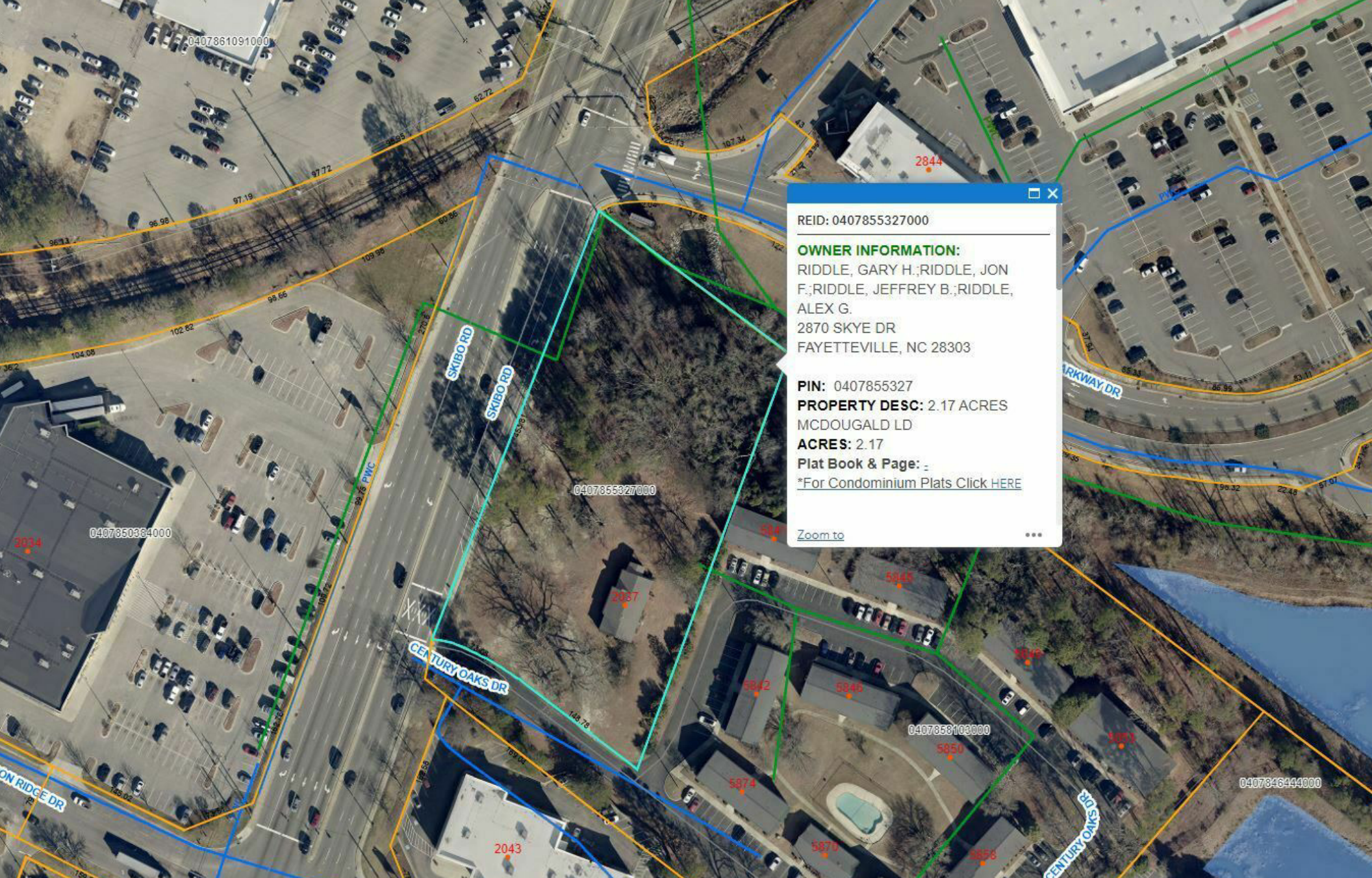
C: 910.861.0449

patrick@grantmurrayre.com



Grant - Murray
REAL ESTATE, LLC
COMMERCIAL AND INVESTMENT BROKERAGE

150 N. McPherson Church Rd | Fayetteville, NC 28303 | www.grantmurrayre.com



REID: 0407855327000

OWNER INFORMATION:

RIDDLE, GARY H.; RIDDLE, JON F.; RIDDLE, JEFFREY B.; RIDDLE, ALEX G.
2870 SKYE DR
FAYETTEVILLE, NC 28303

PIN: 0407855327

PROPERTY DESC: 2.17 ACRES
MCDUGALD LD

ACRES: 2.17

Plat Book & Page: -

**For Condominium Plats Click [HERE](#)*

[Zoom to](#)

...

for more information

PATRICK MURRAY, CCIM, SIOR

Principal / Broker in Charge

O: 910.829.1617

C: 910.861.0449

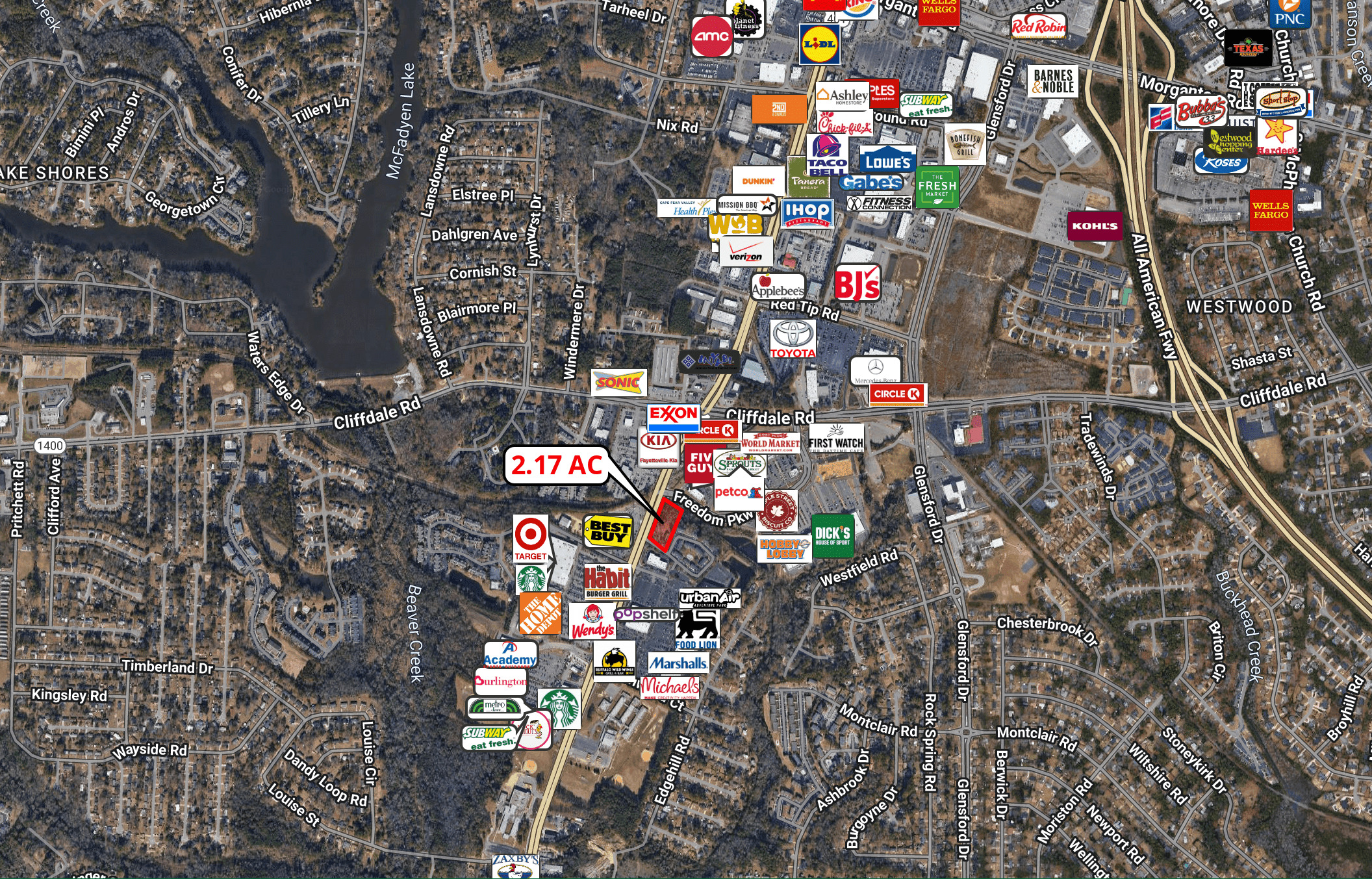
patrick@grantmurrayre.com



Grant - Murray
REAL ESTATE, LLC

COMMERCIAL AND INVESTMENT BROKERAGE

150 N. McPherson Church Rd | Fayetteville, NC 28303 | www.grantmurrayre.com



2.17 AC

for more information

PATRICK MURRAY, CCIM, SIOR

Principal / Broker in Charge

O: 910.829.1617

C: 910.861.0449

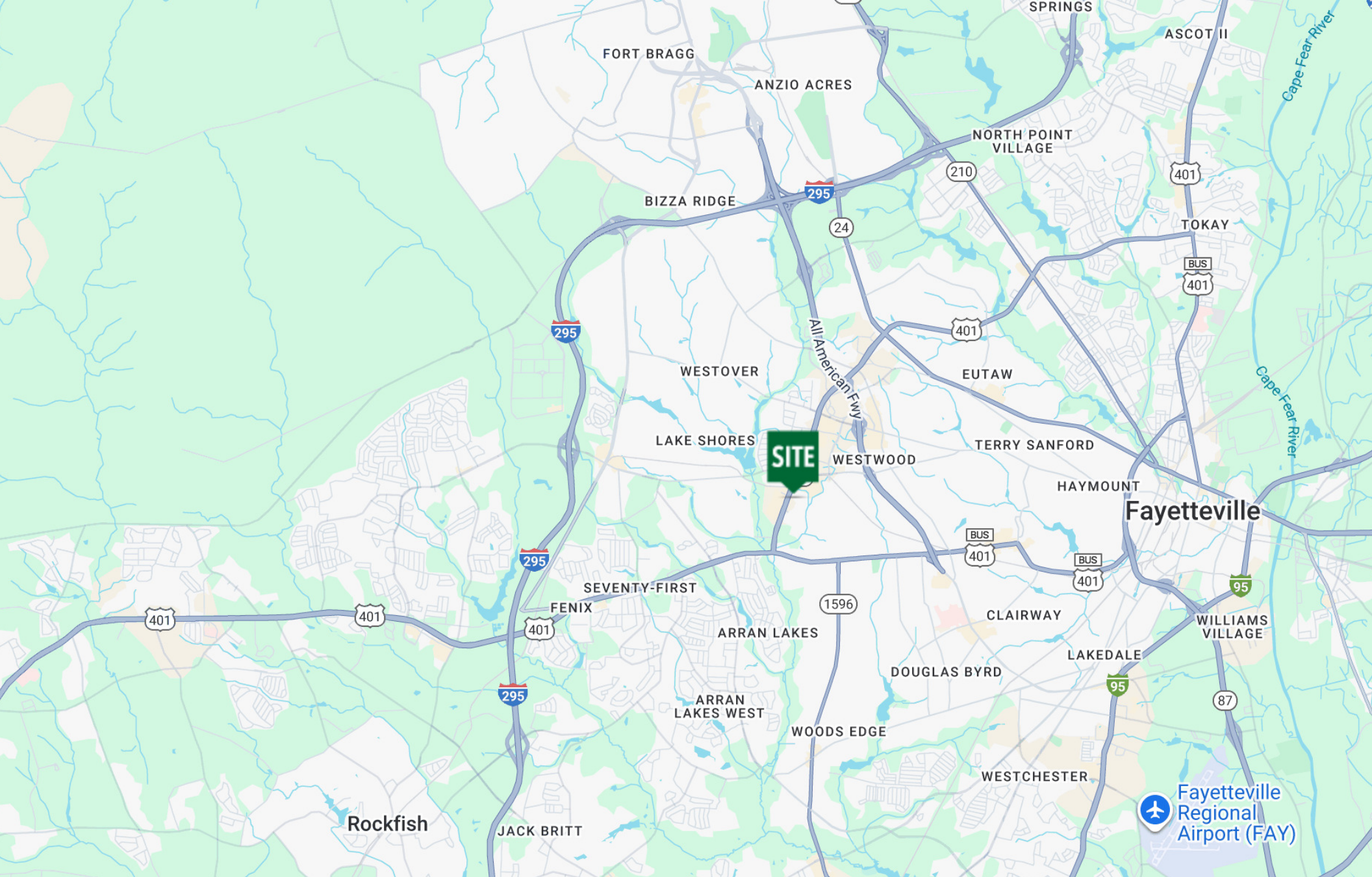
patrick@grantmurrayre.com



Grant - Murray
REAL ESTATE, LLC

COMMERCIAL AND INVESTMENT BROKERAGE

150 N. McPherson Church Rd | Fayetteville, NC 28303 | www.grantmurrayre.com



for more information

PATRICK MURRAY, CCIM, SIOR

Principal / Broker in Charge

O: 910.829.1617

C: 910.861.0449

patrick@grantmurrayre.com

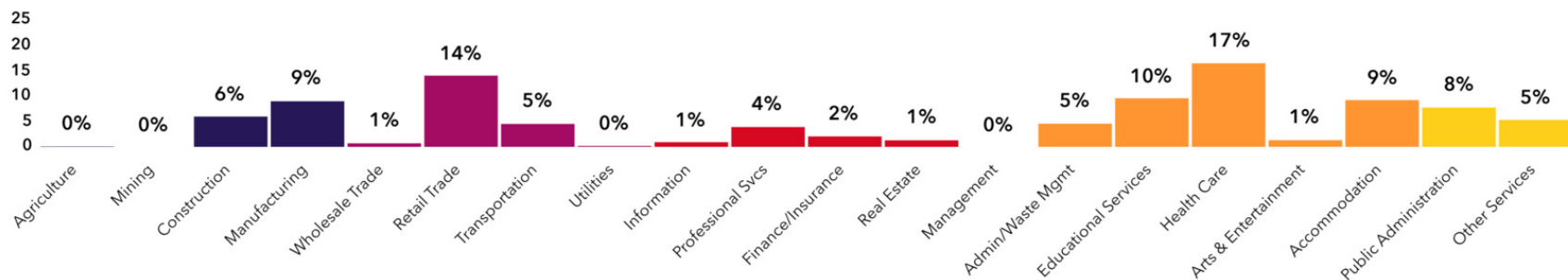


Grant - Murray
REAL ESTATE, LLC

COMMERCIAL AND INVESTMENT BROKERAGE

150 N. McPherson Church Rd | Fayetteville, NC 28303 | www.grantmurrayre.com

Map
Data
©2026



73,622
Total Population



Population



96,143
Daytime Population

\$59,972
Median HH Income



Income



\$35,615
Per Capita Income

32,546
Total Households



Housing



35,667
Total Housing Units

\$207,675
Median Home Value



Homes



44.5%
Home Ownership

35.0
Median Age



People



Tapestry Segment

Demographics

**2037 Skibo Road, Fayetteville, North Carolina,
28314**



6%

No HS Diploma



25%

HS Graduate



39%

Some College



30%

Degree or Higher

Source: U.S. Census Bureau, Census 2010 Summary File 1. Esri forecasts for 2025 and 2028

Source: This infographic contains data provided by Esri-Data Axle (2025), Esri (2025).

for more information

PATRICK MURRAY, CCIM, SIOR

Principal / Broker in Charge

O: 910.829.1617

C: 910.861.0449

patrick@grantmurrayre.com



Grant - Murray
REAL ESTATE, LLC
COMMERCIAL AND INVESTMENT BROKERAGE

150 N. McPherson Church Rd | Fayetteville, NC 28303 | www.grantmurrayre.com

- #2 Best Place in America to Invest in Real Estate (Fortune, 2020)
- Top 50 Most Diverse Cities in America (Niche, 2020)
- Best Places for Business and Careers (Forbes, 2019)
- Top 50 Cheapest Places to Retire MSN Money, 2018)
- Most affordable housing in the USA for first-time home buyers (WalletHub, 2017)
- Vibrant downtown featuring museums, live music, & award-winning performing arts and cultural events
- Home of the International Folk Festival, Bi-Annual Dogwood Festival, When Pigs Fly All-American BBQ Festival, & more
- 520 Restaurants, breweries, wine bars, & more
- Professional & collegiate sporting events
- World-class golf courses



Why Fayetteville?

408,763

30-minute trade area

\$9.9B

total consumer spending

\$77,340

avg household income

6M+ SF

retail in area submarket

for more information

PATRICK MURRAY, CCIM, SIOR

Principal / Broker in Charge

O: 910.829.1617

C: 910.861.0449

patrick@grantmurrayre.com



Grant - Murray
REAL ESTATE, LLC

COMMERCIAL AND INVESTMENT BROKERAGE

150 N. McPherson Church Rd | Fayetteville, NC 28303 | www.grantmurrayre.com