



2333 WESTERN AVE BUILDING

*Plug-and-play public assembly building available
for lease in Seattle's revitalized Waterfront District*

14,900
BUILDING SF

\$20.00
LEASE RATE (PSF, NNN)

2333 WESTERN AVE, SEATTLE, WA 98121



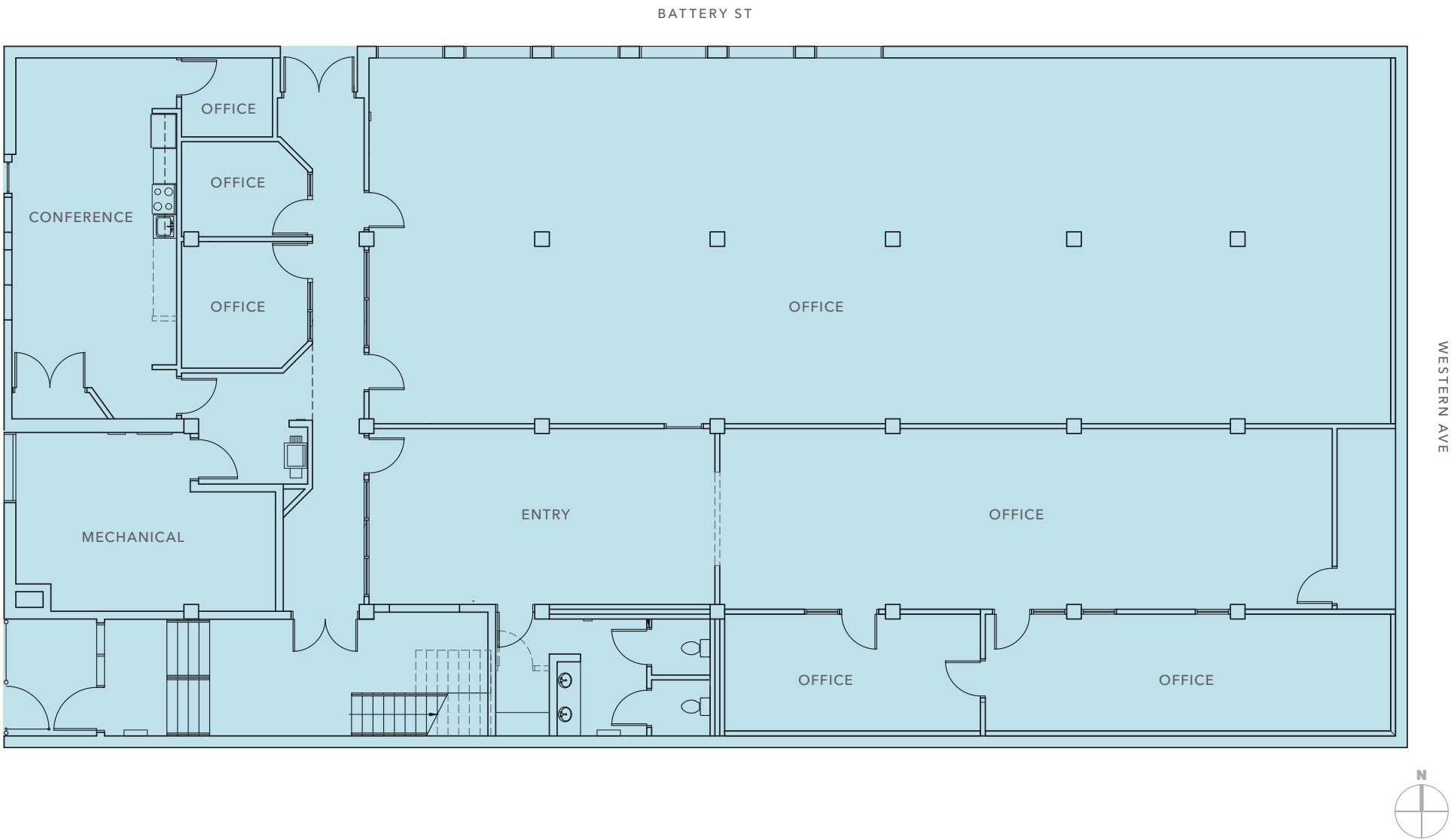
A rare, plug-and-play public assembly building with plentiful off-street parking options and access to transit and amenities.

TOTAL BUILDING SIZE	14,900 SF
STORIES	2
YEAR BUILT/RENOVATED	1949/1980
AUDITORIUM CAPACITY	±300
LEASE RATE	\$20.00/SF, plus NNN

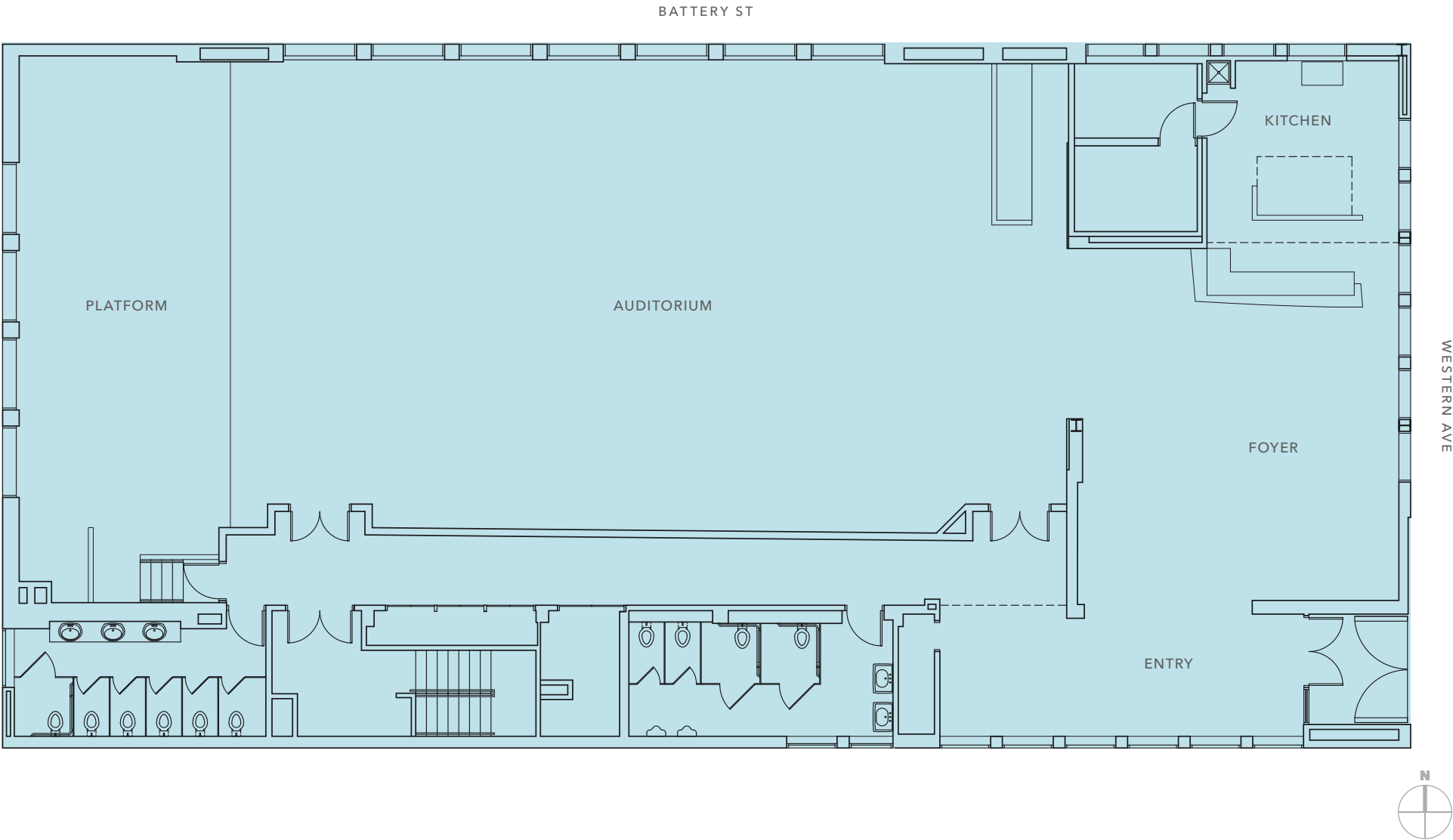
94
WALKER'S PARADISE
WALK SCORE

99
RIDER'S PARADISE
TRANSIT SCORE

LOWER FLOOR PLAN



MAIN LEVEL FLOOR PLAN





2333 WESTERN AVE BUILDING

LOCATED IN THE REVITALIZED *SEATTLE* *WATERFRONT DISTRICT*

The City of Seattle is rebuilding Seattle's central waterfront. Now that the Alaskan Way Viaduct removal is complete, the City is constructing a park promenade along the water, building a new surface street along Alaskan Way, rebuilding Pier 58 and Pier 62, building an elevated connection from Pike Place Market to the waterfront, and improving east-west connections between downtown and Elliott Bay. This effort, called Waterfront Seattle, is a \$806M, multi-year investment.

Source: waterfrontseattle.org



AVAILABLE FOR LEASE





2333 WESTERN AVE BUILDING

*For more information on
this property, please contact*

STEVE PELLUER
425.450.1180
steve.pelluer@kidder.com

ZEKE PELLUER
425.614.0082
zeke.pelluer@kidder.com

KIDDER.COM

This information supplied herein is from sources we deem reliable. It is provided without any representation, warranty, or guarantee, expressed or implied as to its accuracy. Prospective Buyer or Tenant should conduct an independent investigation and verification of all matters deemed to be material, including, but not limited to, statements of income and expenses. Consult your attorney, accountant, or other professional advisor. All Kidder Mathews designs are the sole property of Kidder Mathews. Branded materials and layouts are not authorized for use by any other firm or person.

