



GREENALKE COMMERCIAL CONDO

SEATTLE, WA



THE OFFERING ———

OWNER-OCCUPIED RETAIL/PROFESSIONAL OFFICE

\$1,650,000 | 2,232 Sq Ft | \$739/Sq Ft

Ayers Commercial Group is pleased to present the **rare opportunity** to purchase property in the **sought-after Greenlake neighborhood**. Ideal for **retail or professional office** user to own their own property, **stop paying rent**, and **build equity**. **Open layout**, currently occupied by newer, environmentally safe Dry Cleaner. Unit is currently occupied by the seller, who will vacate at closing.

PROPERTY SUMMARY

ADDRESS 414 NE 70th St,
Seattle, WA 98115

PARCEL NUMBER 2878900060

PARKING 2 spaces in garage

HOA DUES \$900/month

SUITE SIZE 2,232 SF

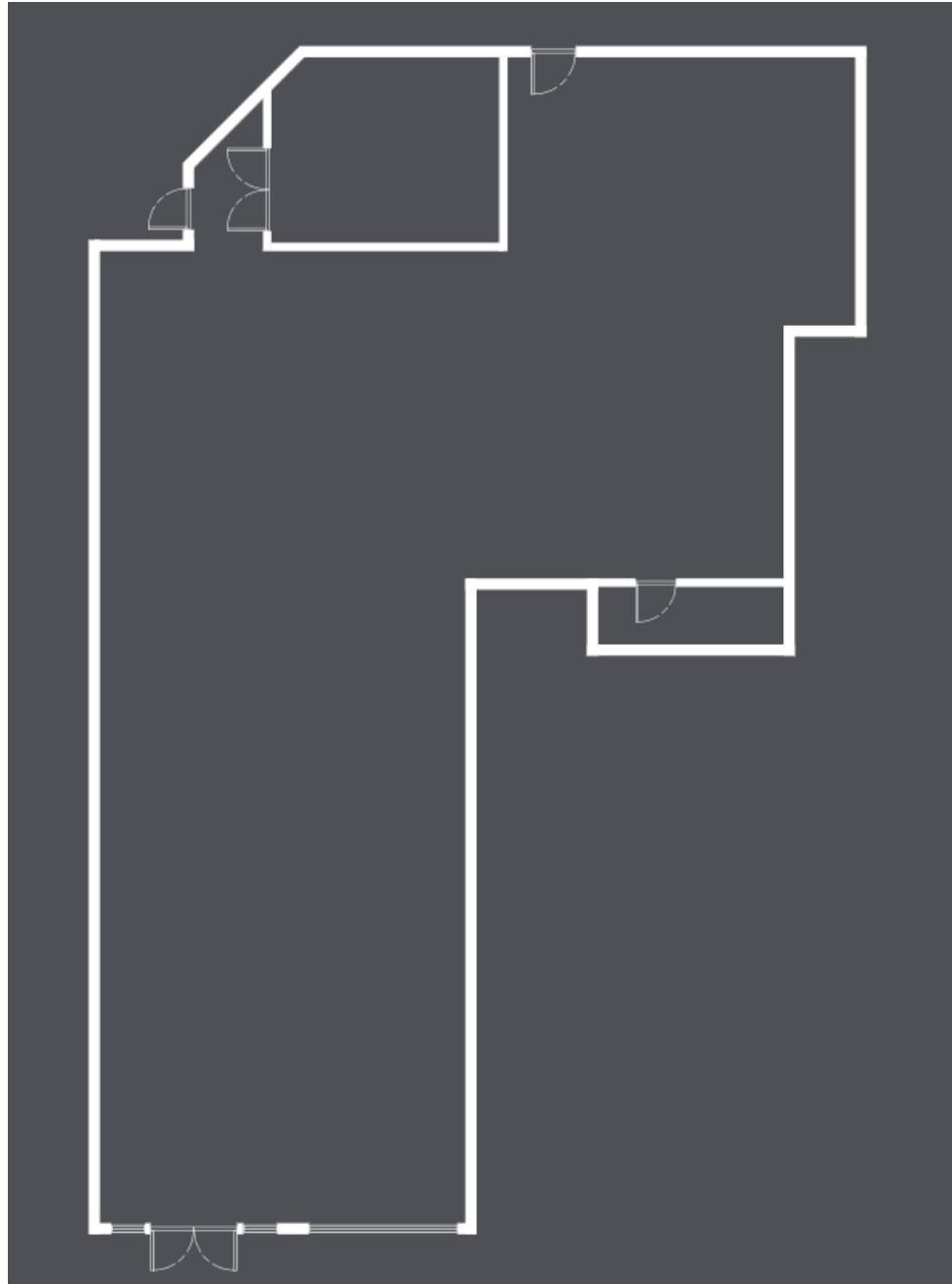
YEAR BUILT 2003

ZONING NC2P-75 (M)

JURISDICTION City of Seattle



FLOOR PLAN







SITE



SITE →



SITE



JEFF AYERS
OWNER | DESIGNATED BROKER
425.275.2406
jeff@ayerscommercialgroup.com

COLE SOREANO
BROKER
206.683.6871
cole@ayerscommercialgroup.com