

Office space, steps to multiple Daniel Island amenities

EXECUTIVE SUITES FOR LEASE

FOUR CORNERS PLAZA

234 Seven Farms Drive | Charleston, SC

Ashley Jackrel, SIOR, CCIM

Senior Vice President

+1 843 327 0124

ashley.jackrel@avisonyoung.com

**AVISON
YOUNG**

Executive Suites

Description

Four Corners Plaza is located in the master-planned community of Daniel Island, is pedestrian friendly, and offers abundant nearby amenities. Ample on-site parking is available behind the building to accommodate both cars and golf carts.

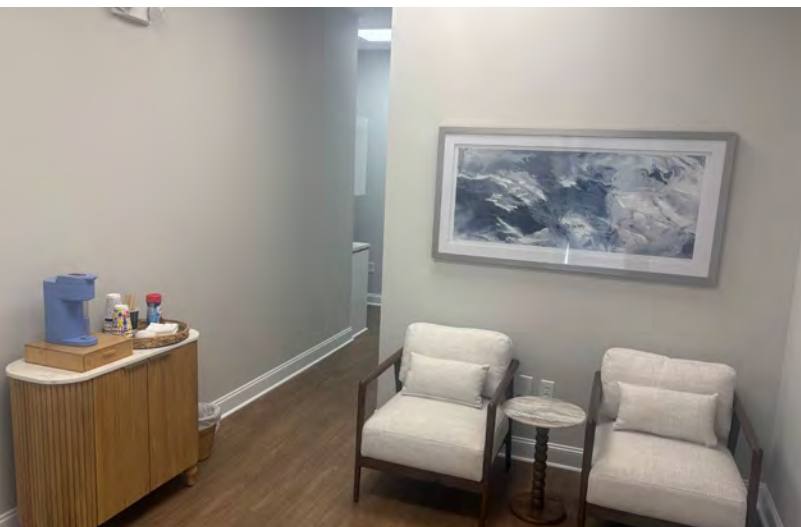
Highlights

- Recently renovated, move-in-ready 2nd floor office suites
- Flexible, short term leases available
- Internet, utilities included
- Ample surface parking available behind suites
- Located at the prime intersection of Seven Farms Drive and River Landing Drive.
- Walk to multiple retail, restaurant, and entertainment spots; 8-minute walk to Credit One Stadium
- 20 minutes to Charleston International Airport and Downtown Charleston

Property information

Address	234 Seven Farms Drive Charleston, SC 29492
Space sizes	±165 sf - 1,131 sf
Rates	\$1,295 - 1,575/month
Lease type	Full service*
Municipality	Charleston
Zoning	Daniel Island Town Center

**In-unit janitorial not included*



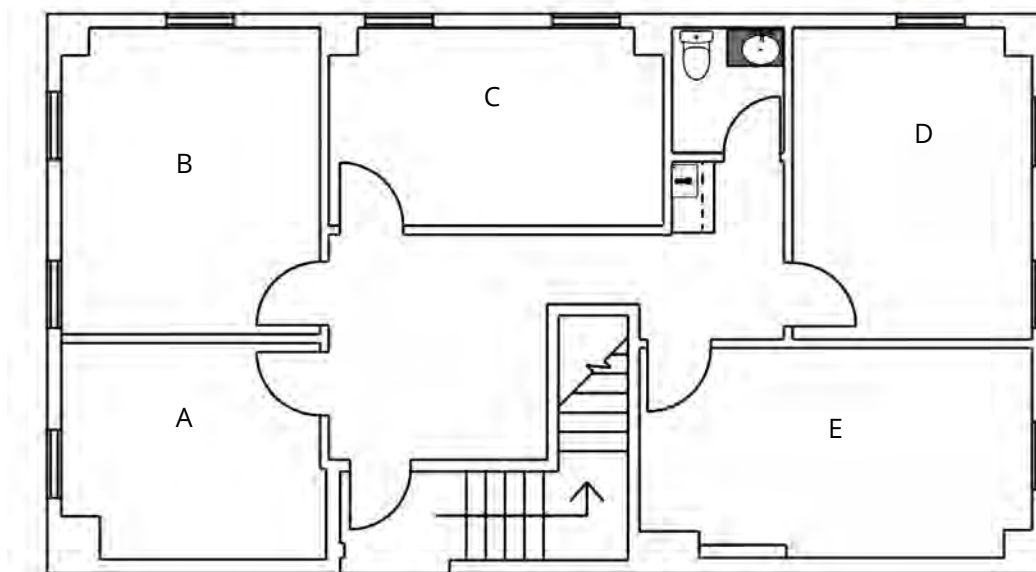
Offices & floor plans

2nd Floor Executive Suites*

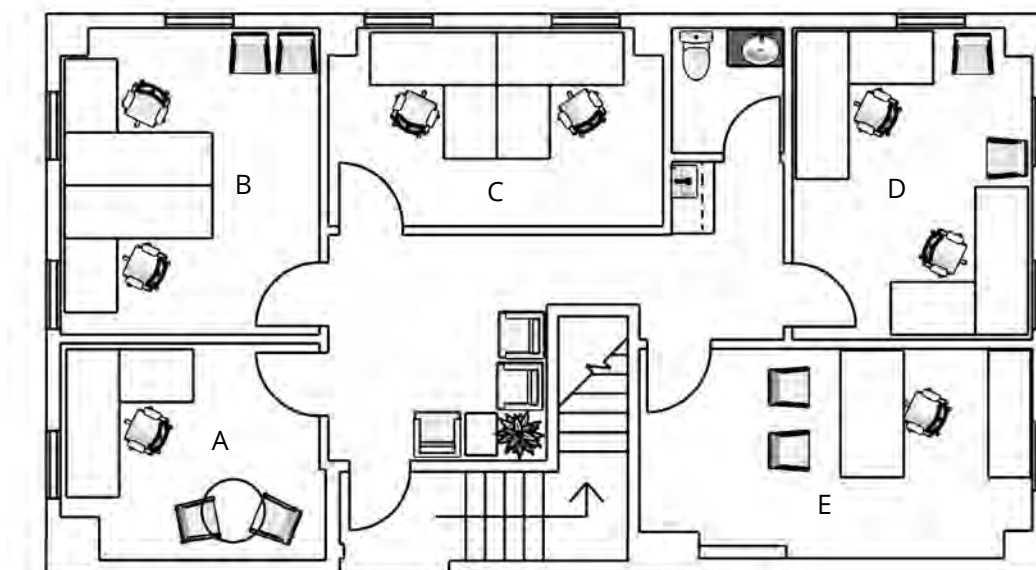
Unit	Space size (usf)	Space size (rsf)	Monthly rate	Lease type
Suite A	128	211	\$1,295	Full service
Suite B	178	293	\$1,395	Full service
Suite C	155	255	\$1,375	Full service
Suite D	165	272	\$1,450	Full service
Suite E	189	311	\$1,575	Full service

*Contact us or [click here](#) for most up-to-date availabilities.

Floorplan



Hypothetical test fit



Photos



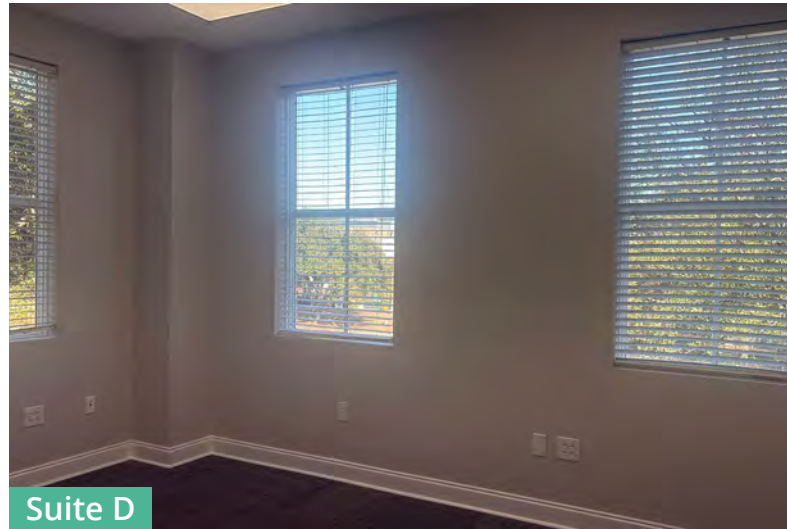
Suite A



Suite B



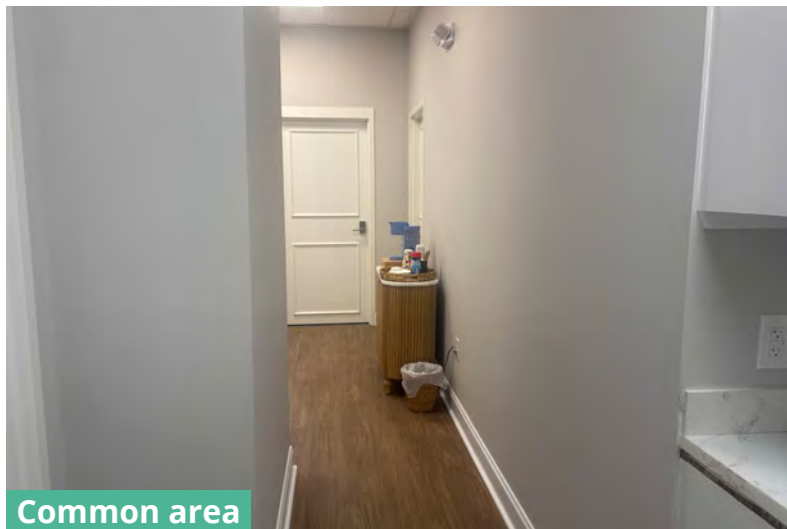
Suite C



Suite D



Suite E



Common area

Location overview



Major employers

Over the last 20 years, Daniel Island and the East suburbs have experienced incredible growth. Several major employers call the area home, including Blackbaud with over 1,400 employees, and Benefitfocus, with over 1,000 employees.



Retail

A variety of shopping and dining experiences are available on Daniel Island, and with its convenient location, access to hundreds more are just a five minute drive to Mount Pleasant.



Recreation & Entertainment

The master planned community is dotted with parks and outdoor recreation opportunities, and Credit One Stadium is one of Charleston's premier concert venues. It attracts a variety of world renowned musical acts and hosts the WTA 500 Charleston Open tennis tournament.



Let's
talk.

For more information, contact:

Ashley Jackrel, SIOR, CCIM

Senior Vice President

+1 843 327 0124

ashley.jackrel@avisonyoung.com

40 Calhoun Street, Suite 350 | Charleston, SC 29401 | 843 725 7200

© 2025. Avison Young. Information contained herein was obtained from sources deemed reliable and, while thought to be correct, have not been verified. Avison Young does not guarantee the accuracy or completeness of the information presented, nor assumes any responsibility or liability for any errors or omissions therein.

**AVISON
YOUNG**