



EVALUATION FACTORS:
 ANY STRUCTURE PENETRATES THE 100:1 SURFACE

LOT A - 121' TALL STRUCTURE PENETRATES THE 34:1 RUNWAY 30 APPROACH AIRSPACE SURFACE
 LOT B - 135' TALL STRUCTURE PENETRATES THE 34:1 RUNWAY 30 APPROACH AIRSPACE SURFACE

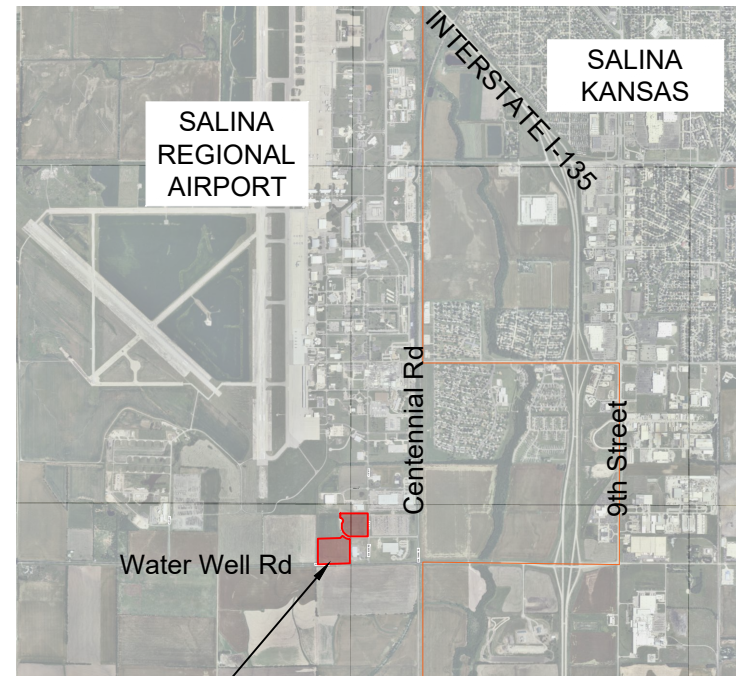
THIS PROPERTY DOES LIE IN THE ZONE FOR SALINE COUNTY CONDITIONAL USE PERMIT FOR CONSTRUCTION OR DEVELOPMENT

THIS PROPERTY IS SUBJECT TO APPLICABLE CITY OF SALINA AND SALINE COUNTY PERMITS

FAA NOTICE CRITERIA TOOL RESULTS:

- PROPOSED STRUCTURE EXCEEDS AN INSTRUMENT APPROACH AREA BY XX FEET, AND AERONAUTICAL STUDY IS NEEDED TO DETERMINE IF IT WILL EXCEED A STANDARD OF SUBPART C OF 14CFR PART 77
- PROPOSED STRUCTURE IS IN PROXIMITY TO A NAVIGATION FACILITY AND MAY IMPACT THE ASSURANCE OF NAVIGATION SIGNAL RECEPTION
- 77.9(B) (100:1 SURFACE) BY XX FT. THE NEAREST AIRPORT IS SLN, AND THE NEAREST RUNWAY IS 17/35

THE FAA, IN ACCORDANCE WITH 77.9, REQUESTS THAT YOU FILE FAA FORM 7460



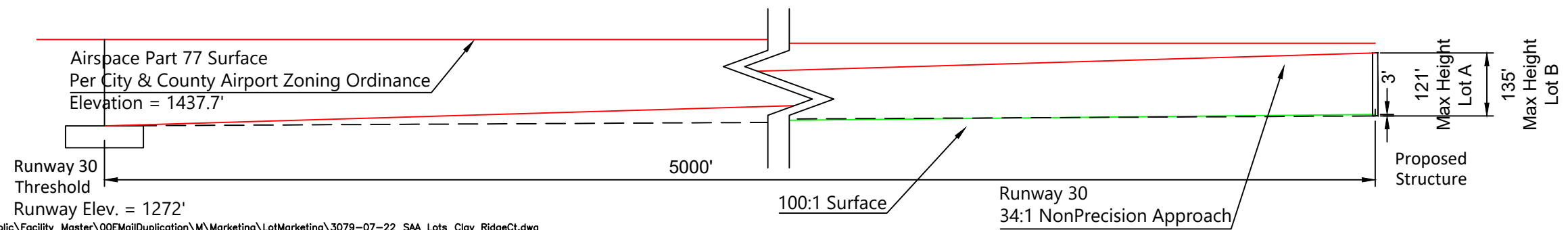
Location Map
No Scale

Salina Airport Authority
 Clay Ridge Ct. Lots
 Highest Point, Lot A 1298'
 Highest Point, Lot B 1284'

Drawing Number 3079-08-22



3237 ARNOLD, SALINA, KS 67401
 (785-827-3914 FAX: 785-827-2221)
 None : REVISIONS
 MWC : DESIGNED BY
 MWC : DRAWN BY
 T - 300' : SCALE
 08/02/22, 12:00 : DATE



1419' max elevation on the approach slope surface.

SALINA AIRPORT AUTHORITY
Clay Ridge Ct. Lots

1
 OF
 1