

EAST INDUSTRIAL BAY

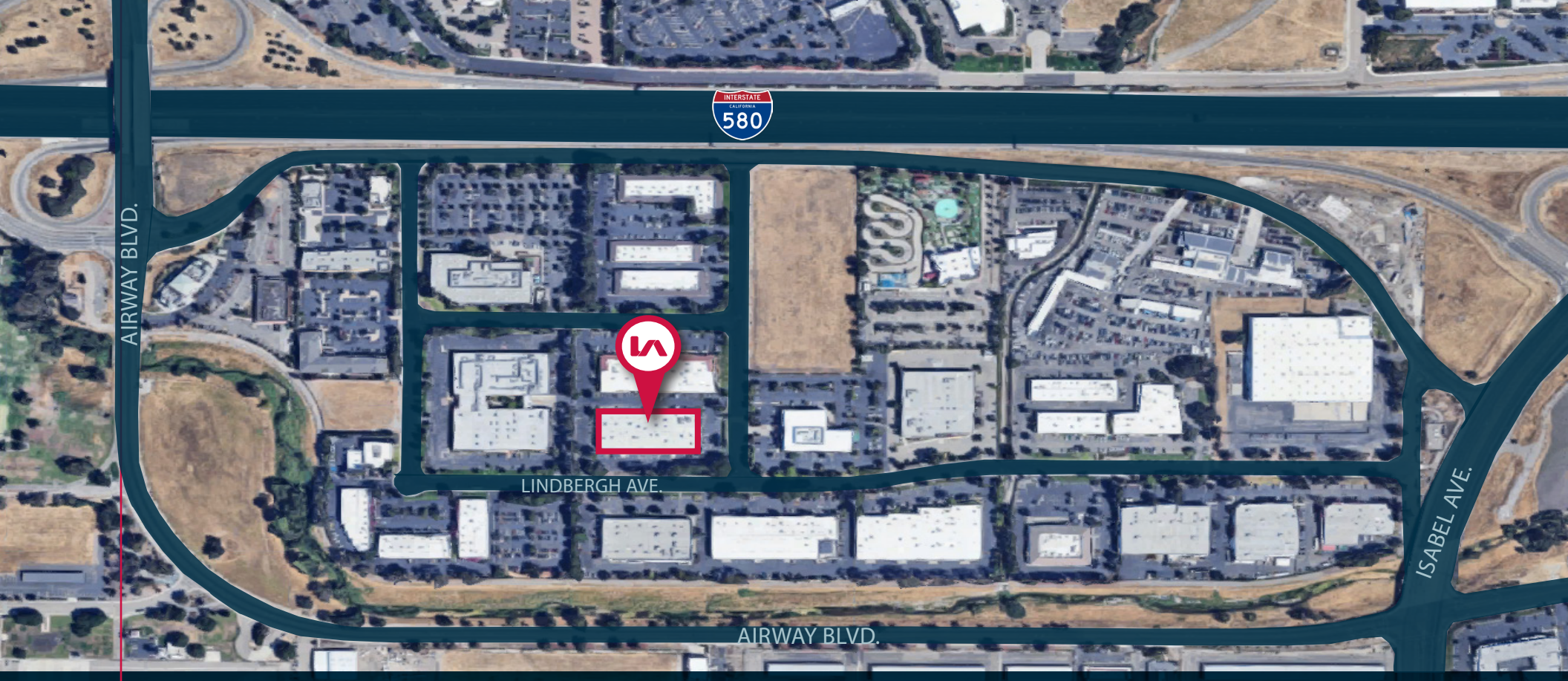
LEE & ASSOCIATES
COMMERCIAL REAL ESTATE SERVICES



FOR LEASE ±9,093 SF LIGHT INDUSTRIAL / R&D SPACE

361 LINDBERGH AVENUE, LIVERMORE, CA 94551

LOCAL EXPERTISE. INTERNATIONAL REACH. WORLD CLASS.



PROPERTY HIGHLIGHTS



±9,093 SF Office/Warehouse



One (1) grade level truck door



Approximately 75% built out office space



Multiple existing floor drains (tenant to verify)



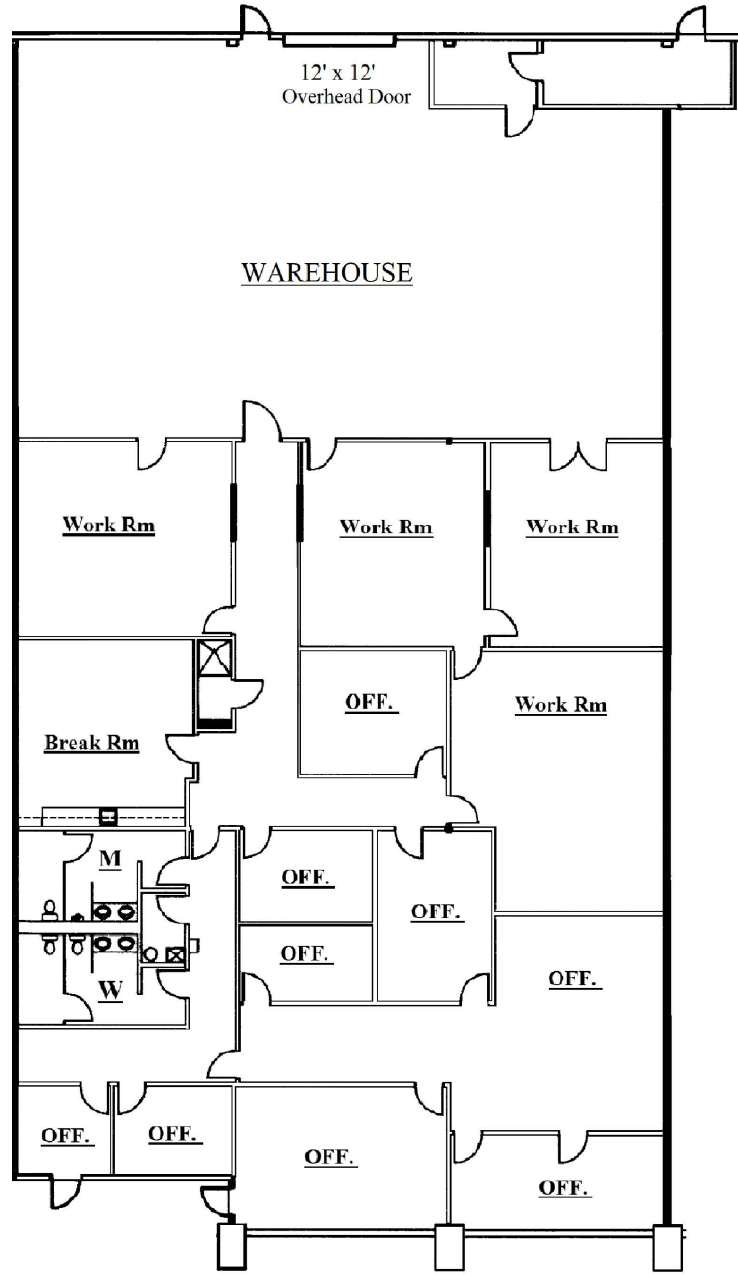
Fully airconditioned and insulated warehouse



Less than one mile from I-580

361
LINDBERGH AVENUE

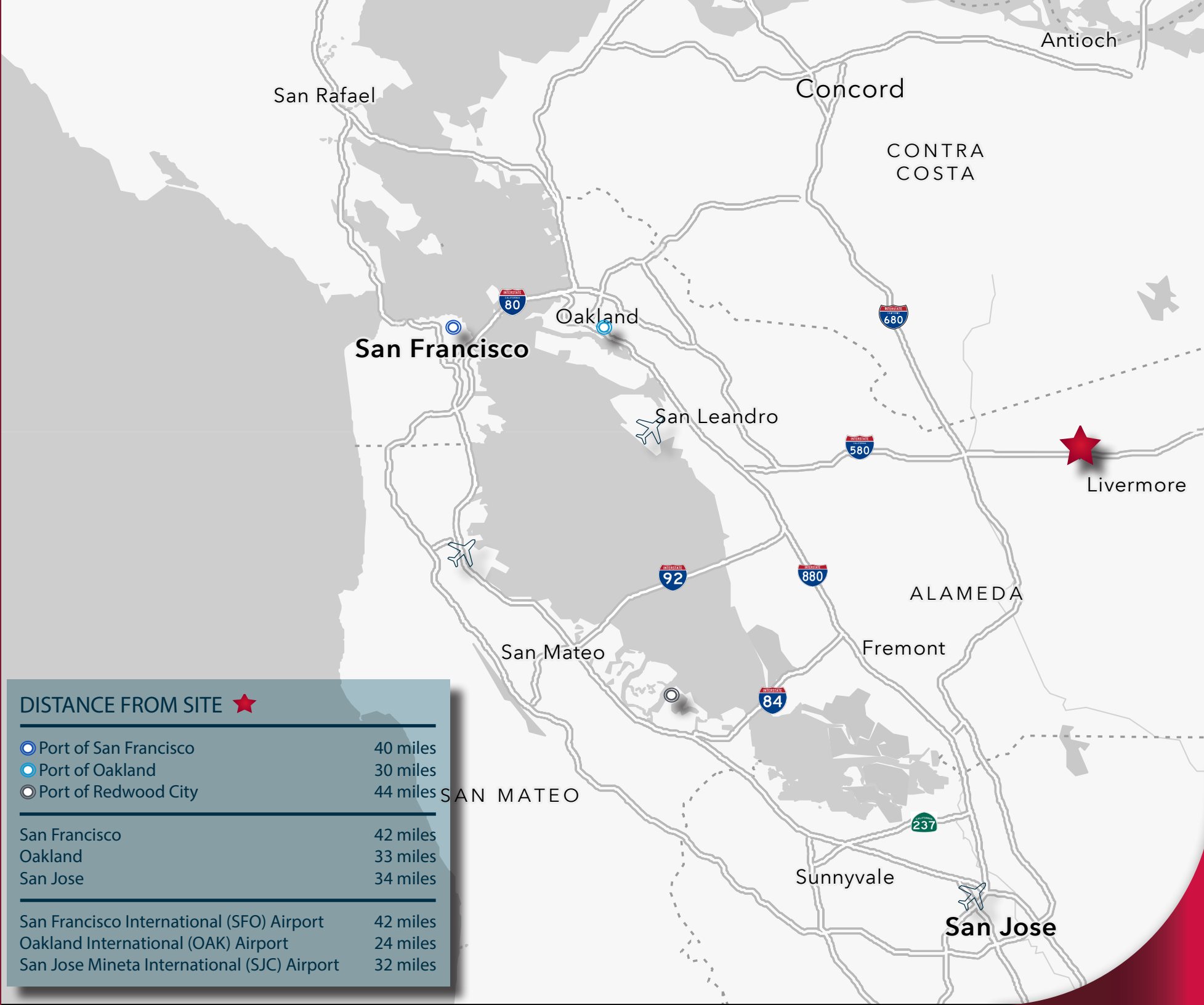
±9,093 SF Office/Warehouse



SITE PLAN

361
LINDBERGH AVENUE

REGIONAL MAP



DISTANCE FROM SITE ★

○ Port of San Francisco	40 miles
● Port of Oakland	30 miles
○ Port of Redwood City	44 miles
<hr/>	
San Francisco	42 miles
Oakland	33 miles
San Jose	34 miles
<hr/>	
San Francisco International (SFO) Airport	42 miles
Oakland International (OAK) Airport	24 miles
San Jose Mineta International (SJC) Airport	32 miles

FOR LEASE

±9,093 SF LIGHT INDUSTRIAL / R&D SPACE

361 LINDBERGH AVENUE | LIVERMORE, CA 94551



Blake Dicus

Principal
bdicus@lee-associates.com
925-737-4144
LIC NO 02074870



Brett Holden

Principal
bholden@lee-associates.com
925-737-4141
LIC NO 00883982