

FOR SALE



+ 2,750 SF – FORMER BANK on ± 0.77 ACRES

NW Corner of Linton Blvd. & Congress Ave., Delray Beach, FL 33445

Hard Corner with Signal Intersection – 0.25 Miles from I-95 Exit

PAUL CAIRO

Broker

pcairo@lagunarealtypartners.com

561-306-4491

EXCLUSIVE LISTING



Edward Cairo

Broker Associate

ecairo@lagunarealtypartners.com

561-376-4583



Demographic Overview

Highlights

- Former bank now available (±2,750 SF) on ±0.77 Acre lot
- 1660 Congress Avenue, Delray Beach, FL 33445
- Located at the hard corner of the signalized intersection of Linton Boulevard & Congress Avenue in East Delray Beach
- Multiple Existing drive-through lanes
- Heavy Traffic counts: 69,000 AADT at the intersection
- Prime visibility at the intersection
- Monument Signage
- 0.25 miles from I-95 exit
- Seeking financial, medical, automotive, and restaurant uses
- Across from: 

Demographics

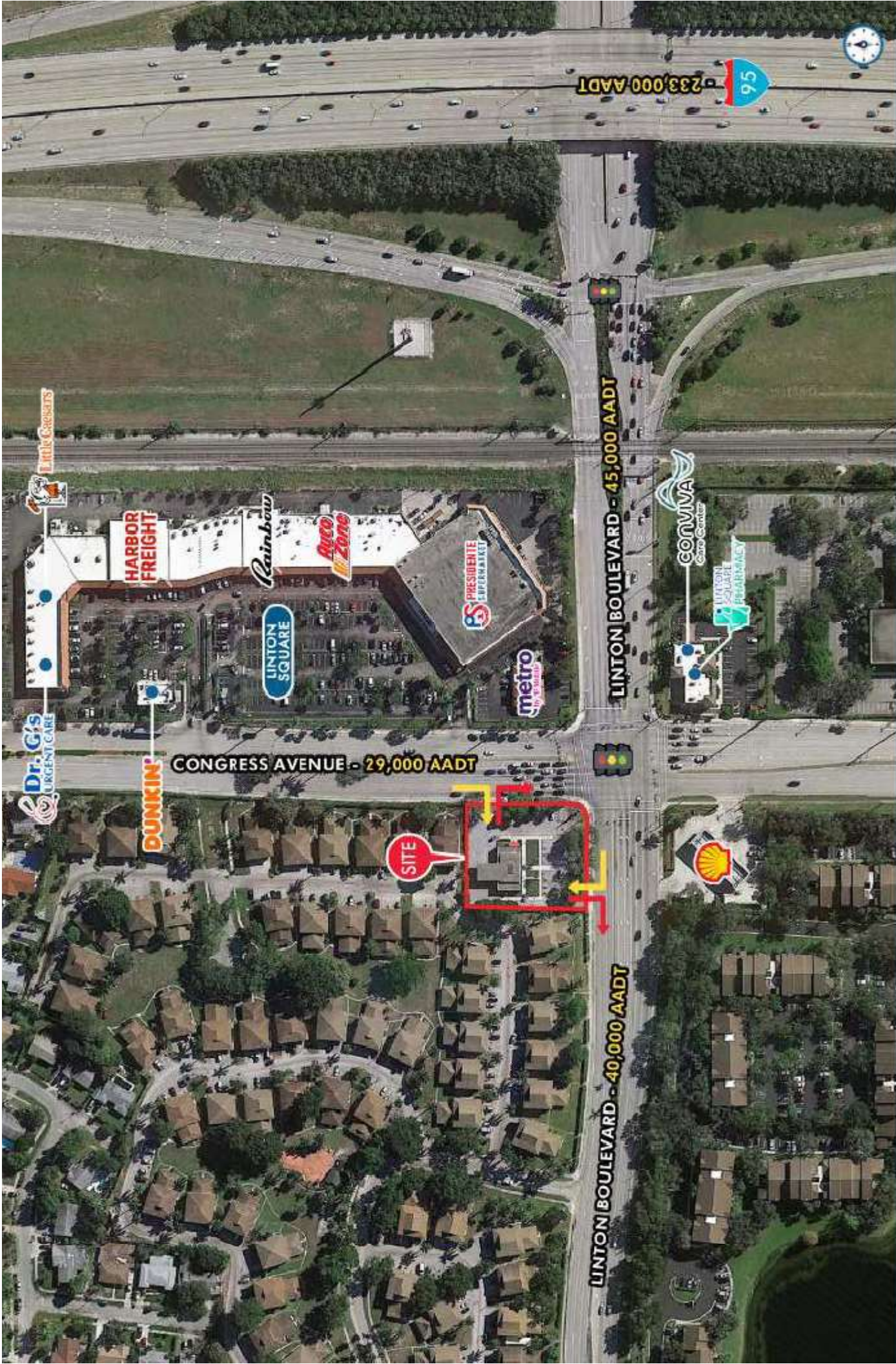
	1 Mile	3 Miles	5 Miles
POPULATION	17,514	96,237	194,951
HOUSEHOLDS	8,424	46,844	93,411
DAYTIME EMPLOYEES	14,875	84,810	173,564
AVERAGE HH INCOME	\$78,213	\$110,255	\$116,110
	5 Minutes	10 Minutes	15 Minutes
POPULATION	39,204	123,833	273,896
HOUSEHOLDS	17,621	58,960	127,165
DAYTIME EMPLOYEES	33,322	109,024	239,823
AVERAGE HH INCOME	\$89,806	\$109,371	\$113,650



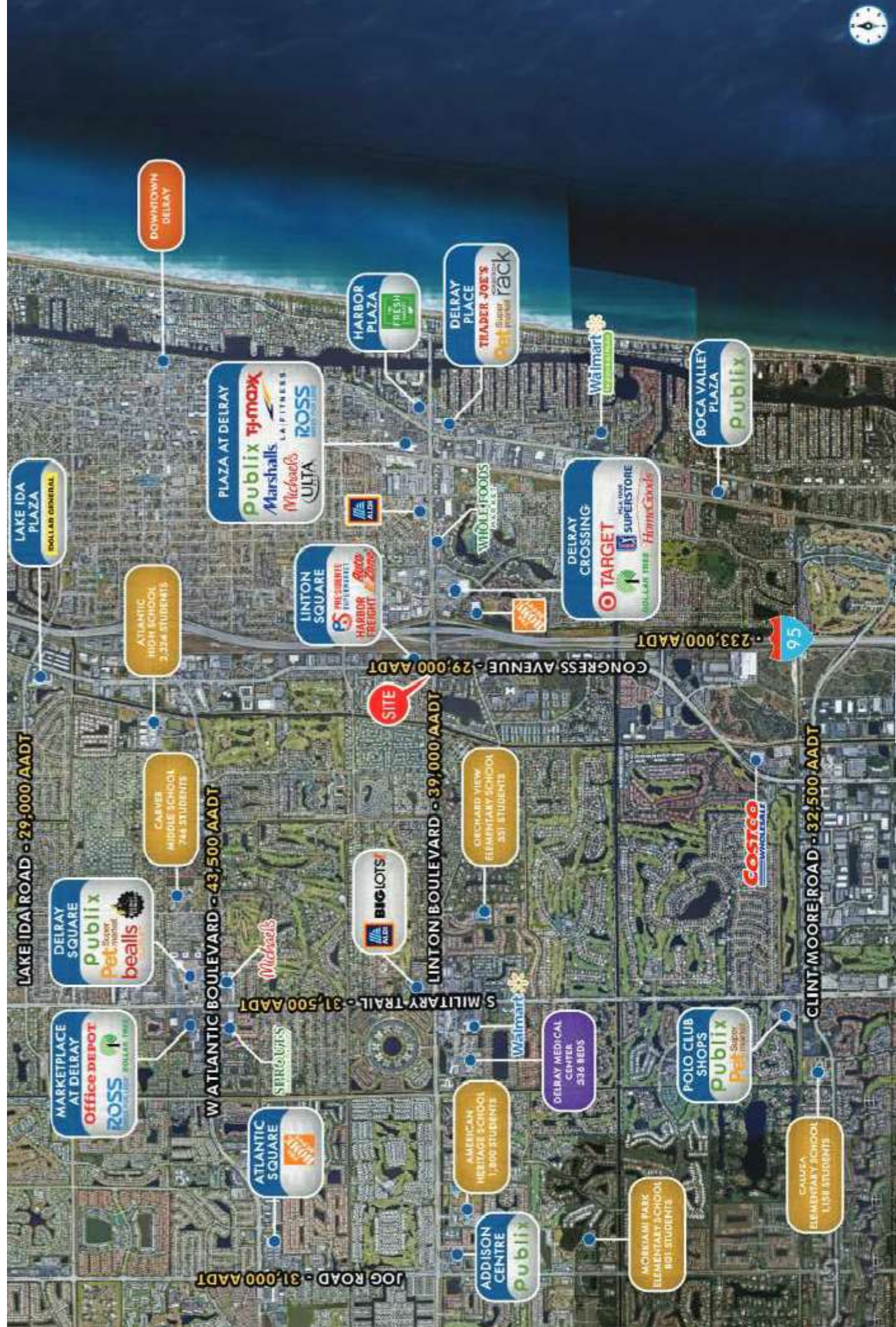
SITE PHOTOS

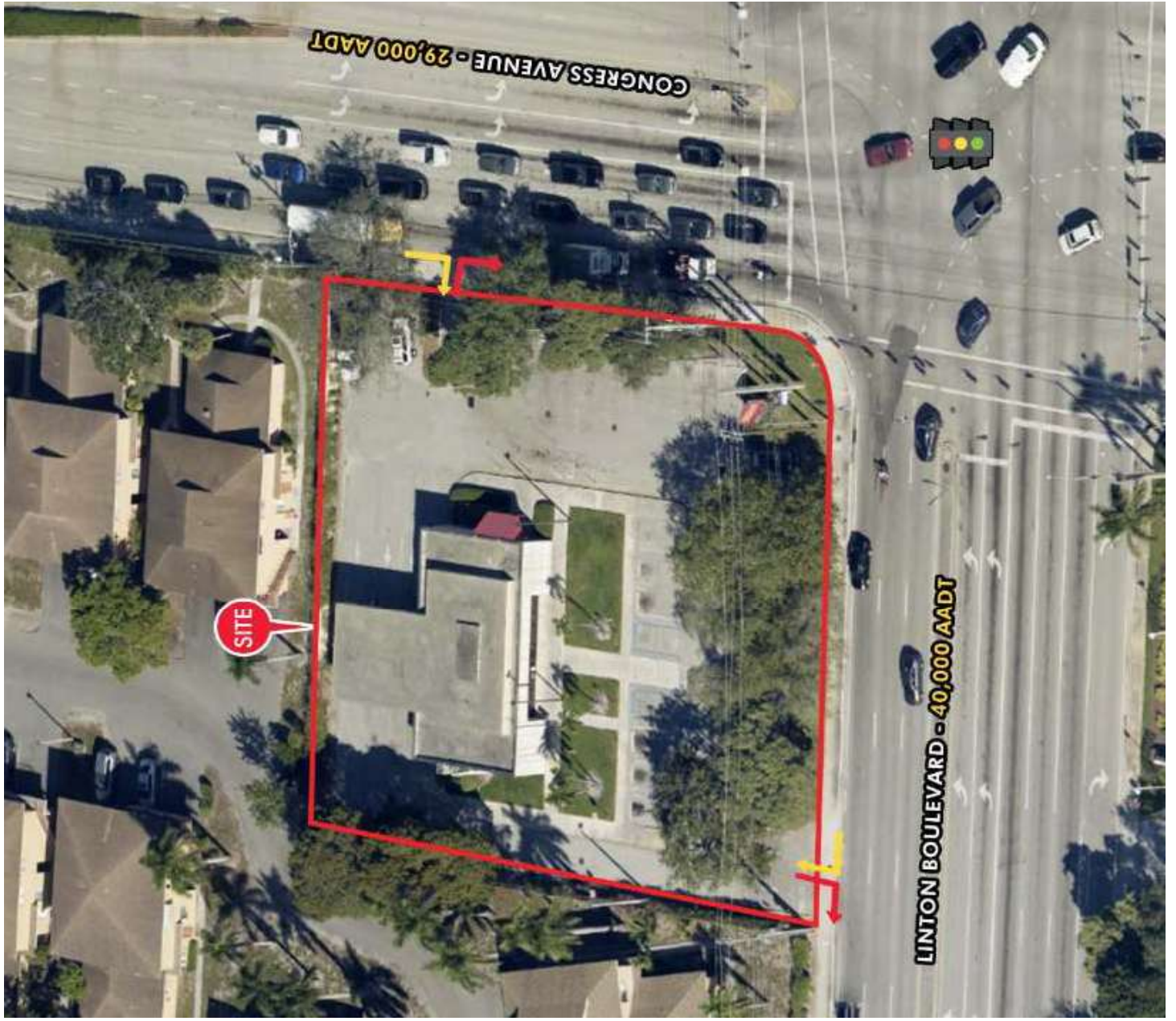


CLOSE INTERSECTION AERIAL



EXTENDED TRADE AERIAL





CONTACT AGENTS

PAUL CAIRO

Broker

pcairo@lagunarealtypartners.com

561-306-4491

Edward Cairo

Broker Associate

ecairo@lagunarealtypartners.com

561-376-4583



