



PARTNERS

FOR SALE

7624 Boone Ave N | Brooklyn Park, MN

- Approximately 75,847 SF Total
- Approx 18,317 SF Office & 57,530 Warehouse
- 12 Docks w/ Levelers
- 3 Drive-ins (14'x12' & 10'x8')
- 25' Clear
- ESFR Sprinkler
- Easy Access to I-694, Hwy 169 & Arbor Lakes Retail Trade Area
- **Sale Price: \$Negotiable**
- CAM/Tax: \$4.77 PSF



Eric Riemer
Broker
Phone: 612-730-4631
eric@creminnesota.com

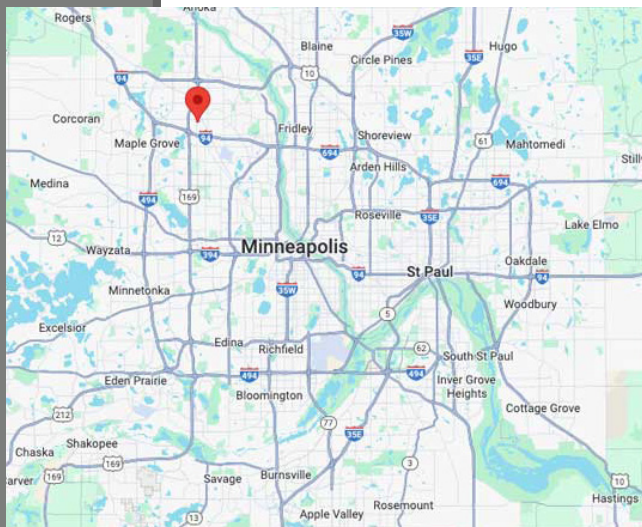
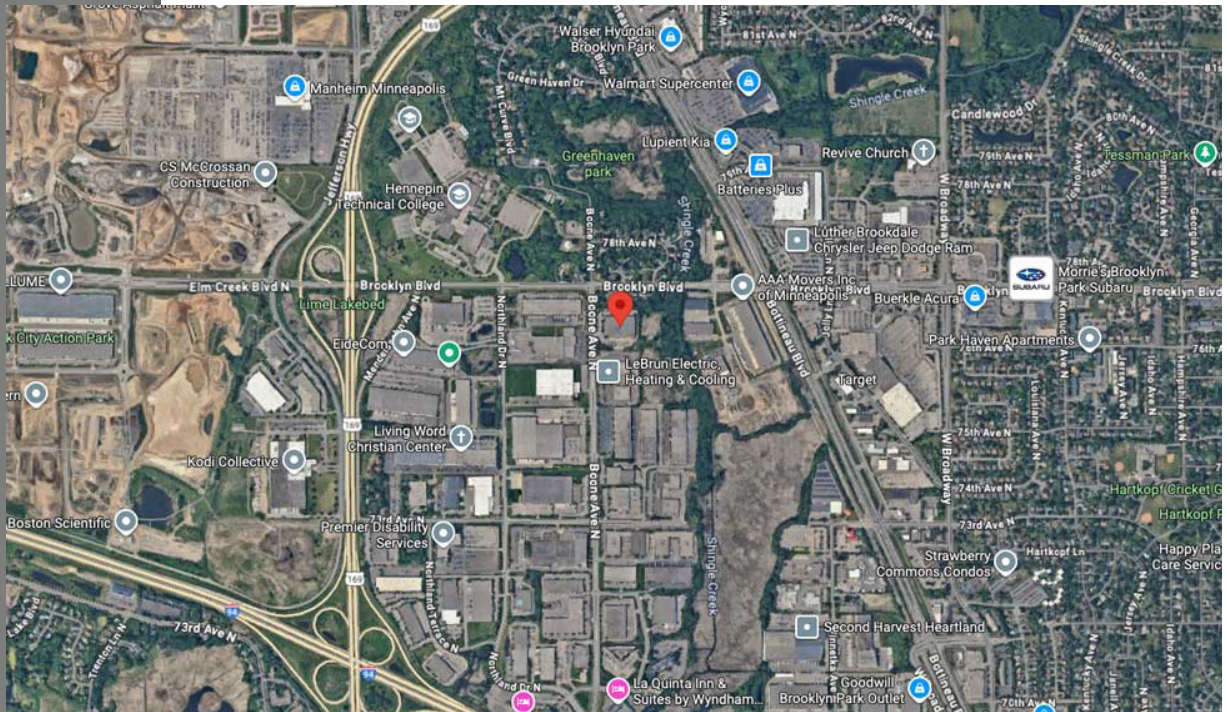
We obtained the information above from sources we believe to be reliable. However, we have not verified its accuracy and make no guarantee, warranty or representation about it. It is submitted subject to the possibility of errors, omissions, change of price, rental or other conditions, prior to sale, lease or financing, or withdrawal without notice. We include projections, opinions, as-sumptions or estimates for example only, and they may not represent current or future performance of the property. You and your tax and legal advisors should conduct your own investigation of the property.

CRE

PARTNERS

FOR SALE

7624 Boone Ave N | Brooklyn Park, MN



Eric Riemer
CRE Partners
Broker
612-730-4631
eric@creminnesota.com

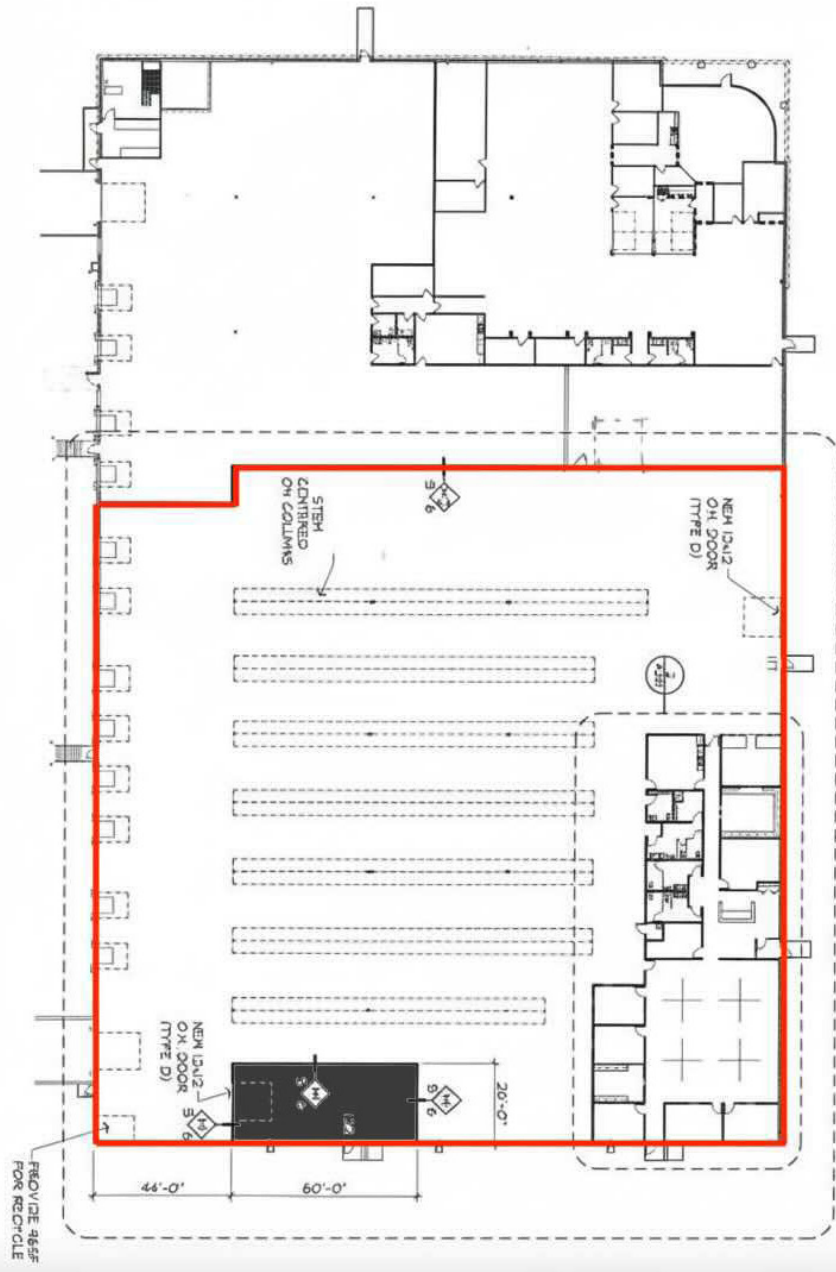


PARTNERS

FLOOR PLAN

Full Building (Vacant Space Outlined)

Vacant Space - 45,599 SF



CRE

PARTNERS

PHOTOS

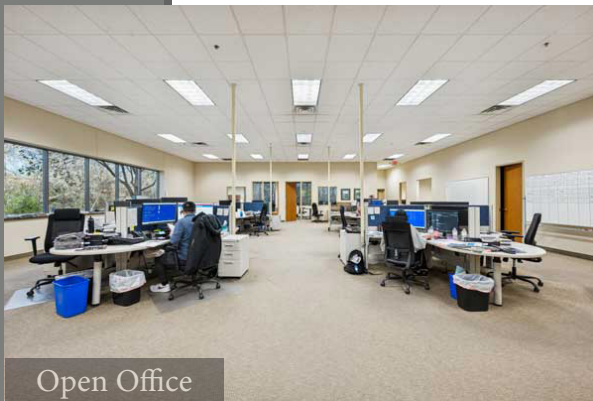
For more info, visit: [7624 Boone Ave N, Brooklyn Park](https://www.commercialrealestateminnesota.com/7624-Boone-Ave-N-Brooklyn-Park)



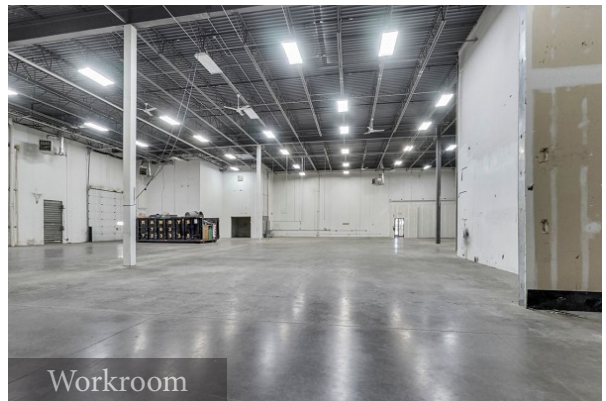
Office



Executive Office



Open Office



Workroom



Warehouse



Loading