

# 3760 OCEANIC WAY

*Suite 503, Oceanside, CA*



**FOR SALE OR LEASE**

**HIGHLY IMPROVED GHOST KITCHEN INCLUDING  
15 INDIVIDUAL KITCHENS**

**5,393 RSF**





# PROPERTY HIGHLIGHTS



## OCEAN RANCH CORPORATE CENTER



Extensive Build Out of **15**  
Individual Kitchens Including  
Hoods, Faucets, & Cold Storage



Clear Height: 20'



Gas Served



Approximately 14 unreserved  
parking spaces



12'X14' Grade Level Roll-Up  
Loading Door



Zoning: IL



1,500 Gallon Grease  
Interceptor



Power: 3-Phase, 600 Amps



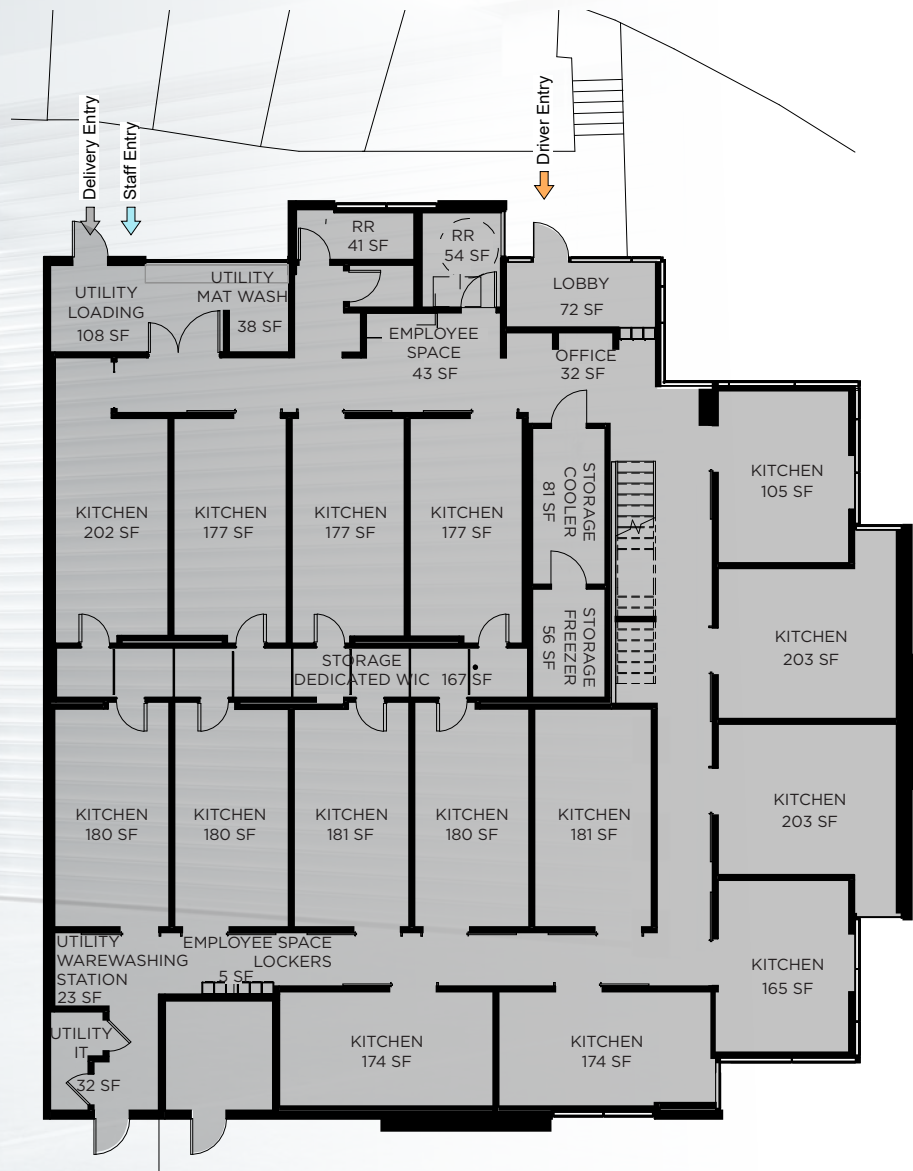
Located in Highly Desirable  
Ocean Ranch Corporate  
Center



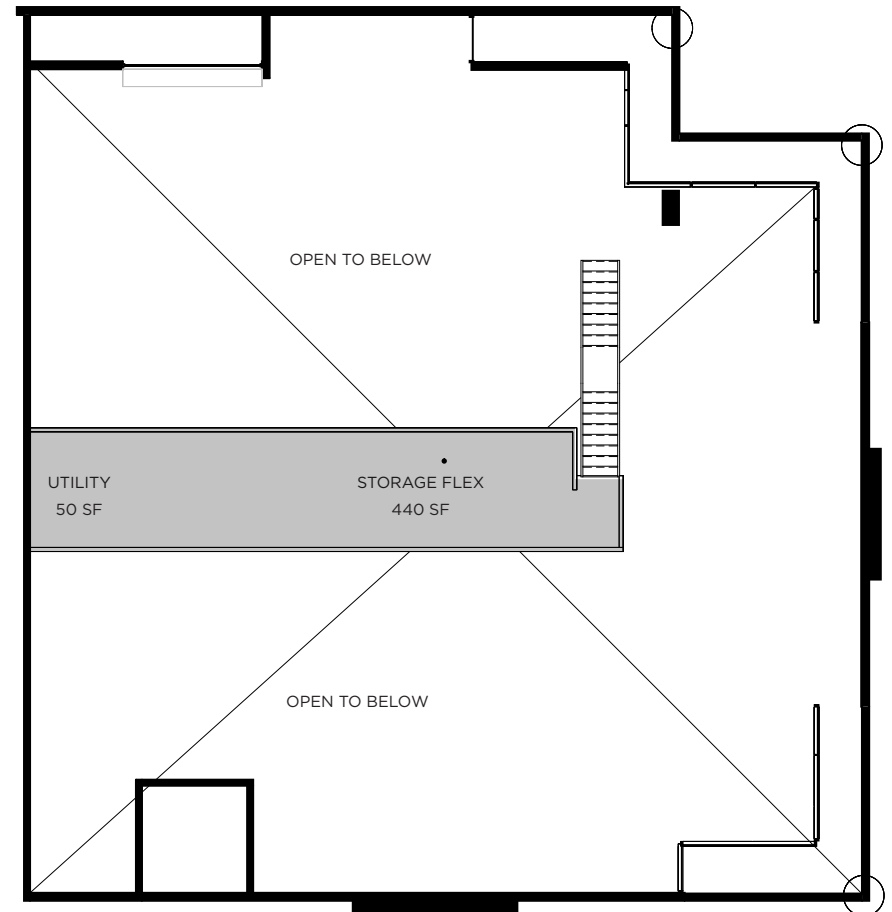
Sale Price/Lease Rate:  
Call Broker For Details

# FLOOR PLAN

## First Floor



## Second Floor





# INTERIOR PHOTOS



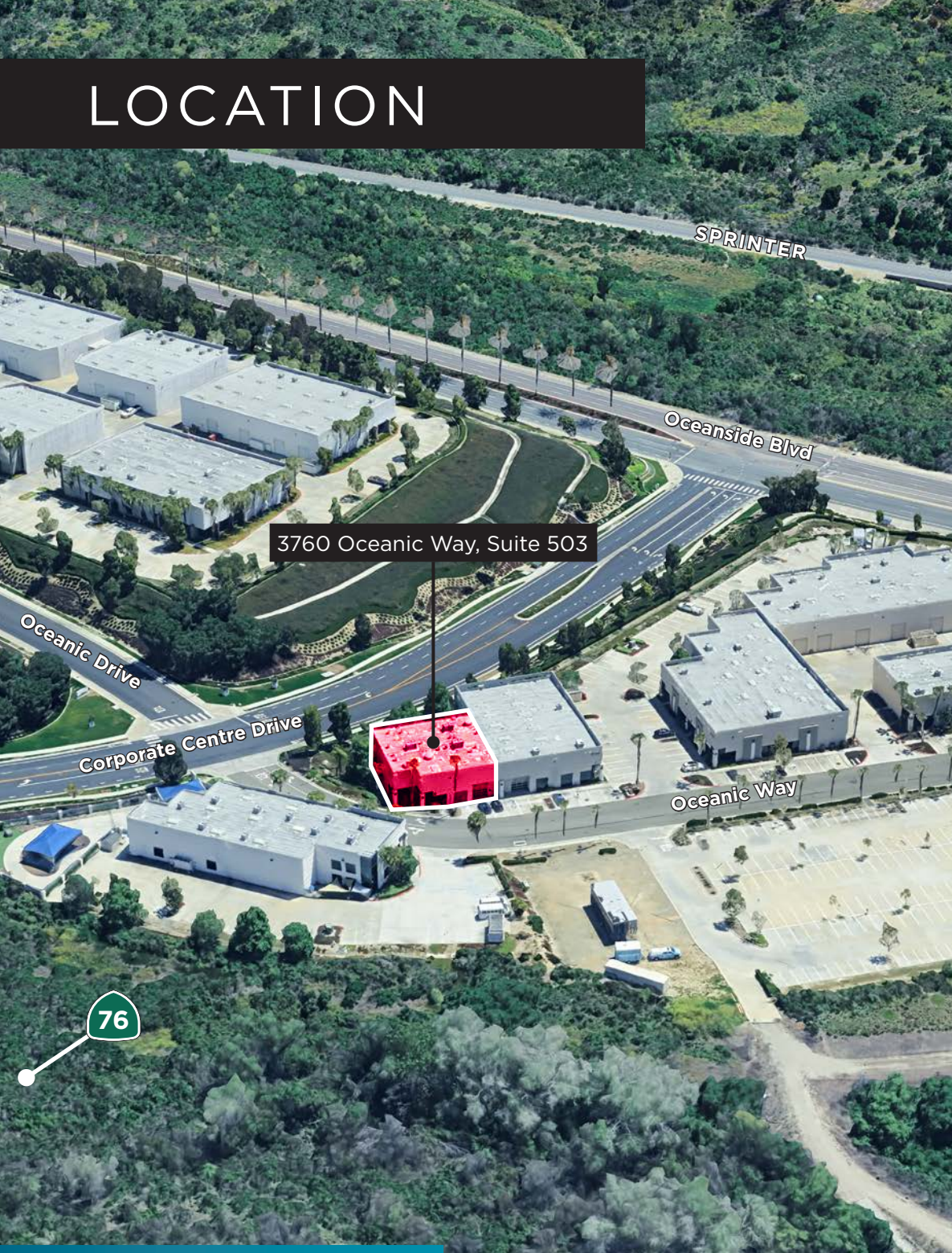


# SITE PLAN





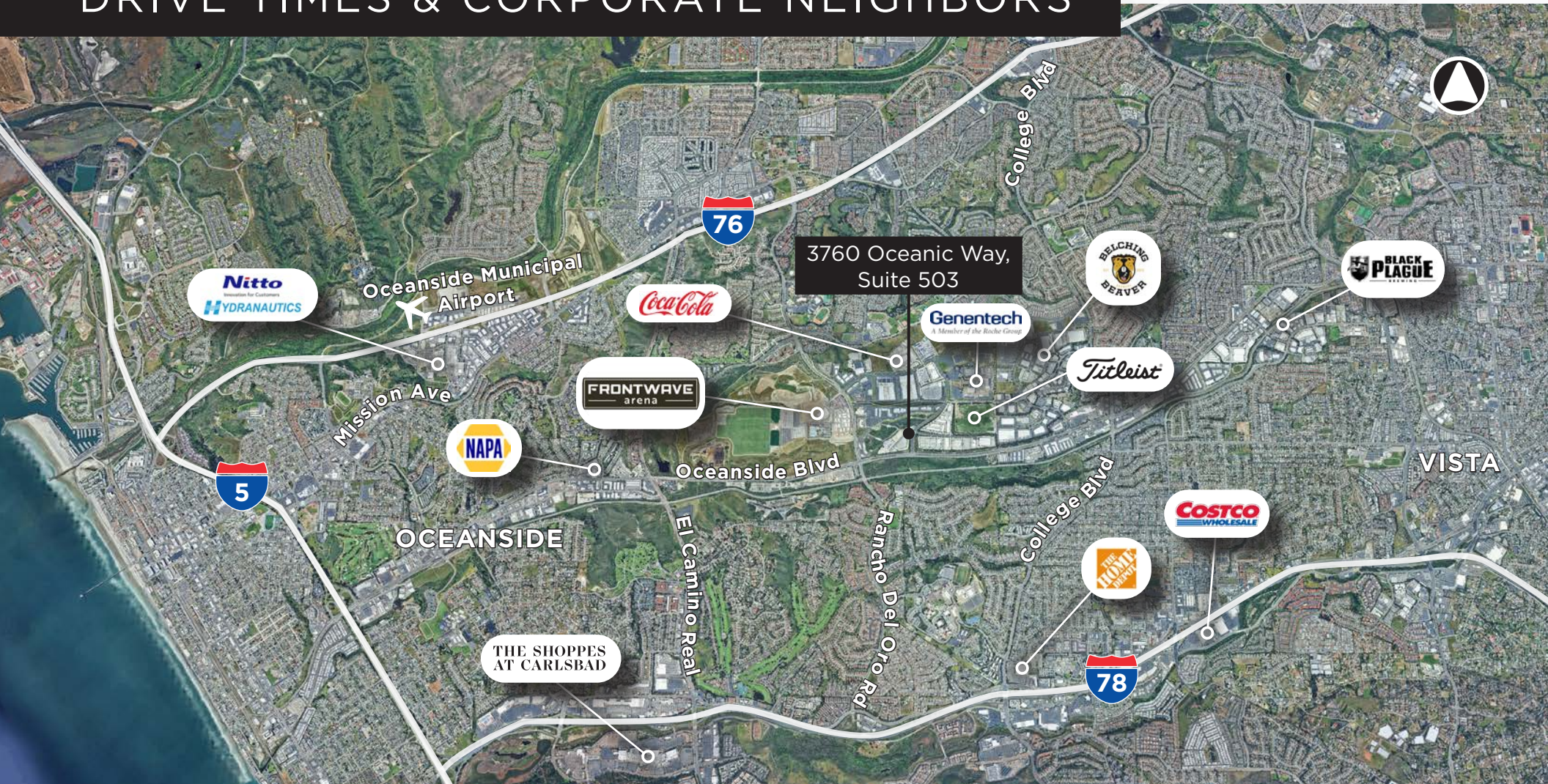
# LOCATION



3760 OCEANIC WAY, SUITE 503, OCEANSIDE, CA



# DRIVE TIMES & CORPORATE NEIGHBORS



## DRIVE TIMES

**7 Minutes** to Hwy-76  
**7 Minutes** to Hwy-78  
**10 Minutes** to I-5  
**40 Minutes** to Orange County

**45 Minutes** to San Diego  
International Airport  
**50 Minutes** to Downtown San Diego  
**1 Hr 10 Mins** to International Border

CARLSBAD



3760 OCEANIC WAY, SUITE 503 //// OCEANSIDE

FOR SALE/LEASE



FOR MORE INFORMATION CONTACT BROKER:

**JOE CROTTY**

760.431.3851  
joe.crotty@cushwake.com  
Lic. No.01369821

**CONOR BOYLE**

760.431.3856  
conor.boyle@cushwake.com  
Lic. No.02003867

**TYLER STEMLEY**

760.431.3841  
tyler.stemley@cushwake.com  
Lic. No.02003867

**VINCENT PROVENZANO**

760.431.4212  
vince.provenzano@cushwake.com  
Lic. No.01926894

©2025 Cushman & Wakefield. All rights reserved. The information contained in this communication is strictly confidential. This information has been obtained from sources believed to be reliable but has not been verified. NO WARRANTY OR REPRESENTATION, EXPRESS OR IMPLIED, IS MADE AS TO THE CONDITION OF THE PROPERTY (OR PROPERTIES) REFERENCED HEREIN OR AS TO THE ACCURACY OR COMPLETENESS OF THE INFORMATION CONTAINED HEREIN, AND SAME IS SUBMITTED SUBJECT TO ERRORS, OMISSIONS, CHANGE OF PRICE, RENTAL OR OTHER CONDITIONS, WITHDRAWAL WITHOUT NOTICE, AND TO ANY SPECIAL LISTING CONDITIONS IMPOSED BY THE PROPERTY OWNER(S). ANY PROJECTIONS, OPINIONS OR ESTIMATES ARE SUBJECT TO UNCERTAINTY AND DO NOT SIGNIFY CURRENT OR FUTURE PROPERTY PERFORMANCE.

