

6,000 SF OFFICE/WAREHOUSE ON .241 AC

LOCATED MINUTES FROM I-85

620 ELK ST ALEXANDER, ND 58831

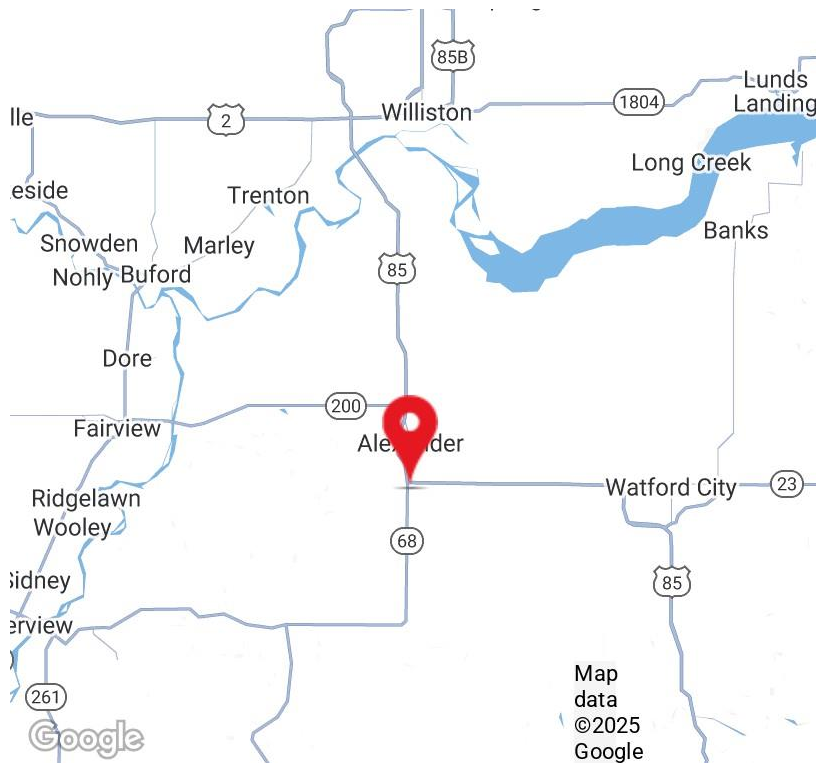
FOR LEASE



LEASE RATE CALL FOR PRICING

PROPERTY HIGHLIGHTS

- 6,000 +/- SF Industrial Space on .241 +/- AC
- Recent renovations include new flooring in the office area, fresh paint throughout the shop, office, and bathroom areas, and new toilets and vanity/sinks in both the office and shop bathrooms.
- Zoned commercial | Proposed use includes office or light industrial
- Parcel ID: 79-10-06700
- Ideally located under 3 miles from I-85
- Just 19 miles to Watford City & 29 miles to Williston



Mike Elliott
CEO | Managing Broker
701.713.6606
mike.elliott@erescompanies.com



6,000 SF OFFICE/WAREHOUSE ON .241 AC

LOCATED MINUTES FROM I-85

620 ELK ST ALEXANDER, ND 58831

FOR LEASE

AERIAL MAP



Imagery ©2025 Airbus,
Maxar Technologies

Mike Elliott
CEO | Managing Broker
701.713.6606
mike.elliott@erescompanies.com

ERES | erescompanies.com



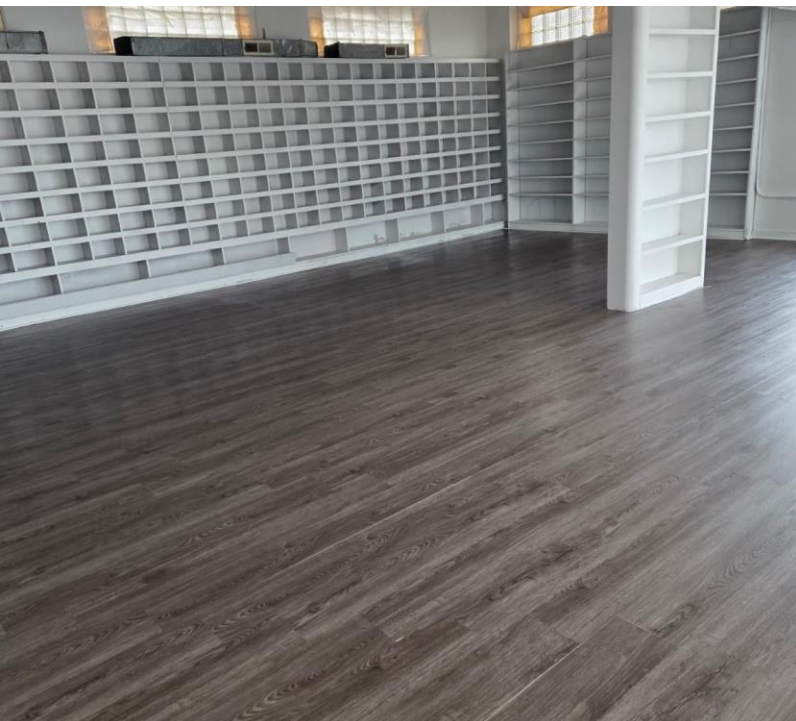
6,000 SF OFFICE/WAREHOUSE ON .241 AC

LOCATED MINUTES FROM I-85

620 ELK ST ALEXANDER, ND 58831

FOR LEASE

INTERIOR PHOTOS



Mike Elliott
CEO | Managing Broker
701.713.6606
mike.elliott@erescompanies.com

ERES | erescompanies.com



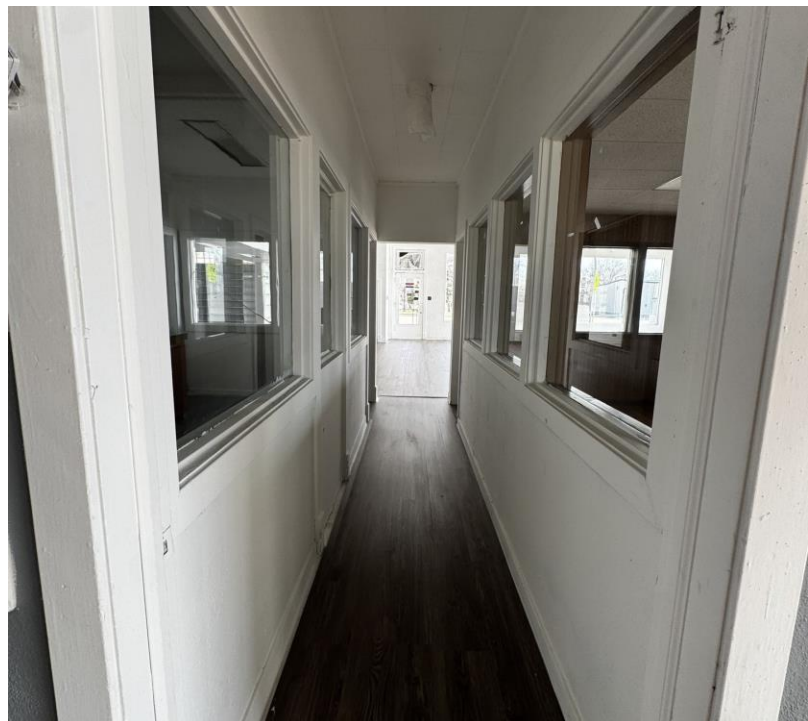
6,000 SF OFFICE/WAREHOUSE ON .241 AC

LOCATED MINUTES FROM I-85

620 ELK ST ALEXANDER, ND 58831

FOR LEASE

OFFICE PHOTOS



Mike Elliott
CEO | Managing Broker
701.713.6606
mike.elliott@erescompanies.com

ERES | erescompanies.com



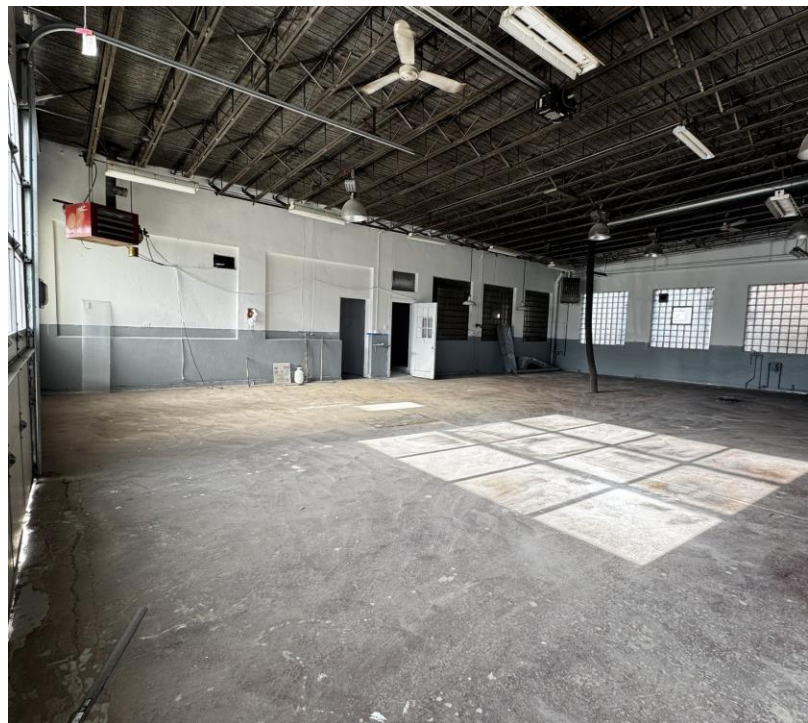
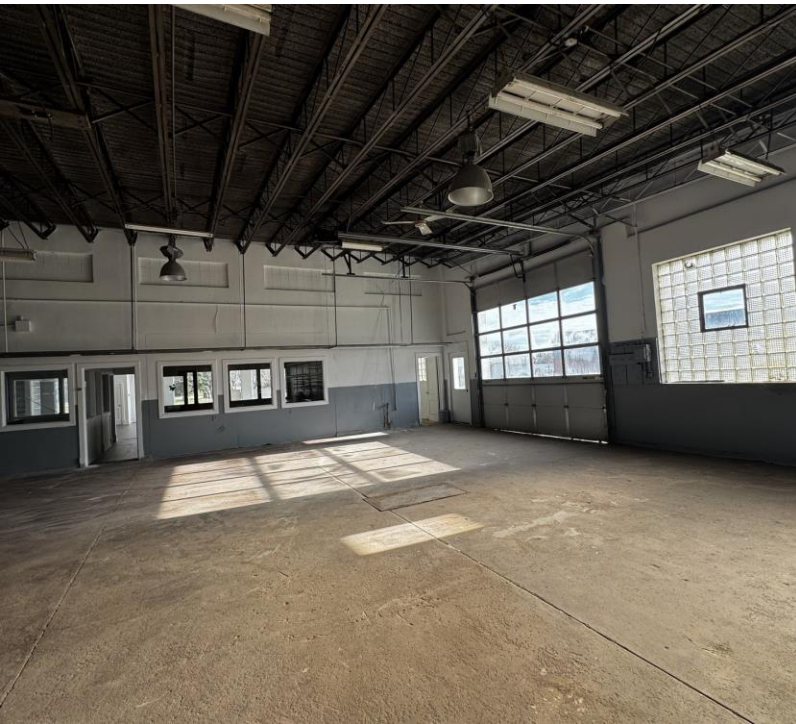
6,000 SF OFFICE/WAREHOUSE ON .241 AC

LOCATED MINUTES FROM I-85

620 ELK ST ALEXANDER, ND 58831

FOR LEASE

WAREHOUSE PHOTOS



Mike Elliott
CEO | Managing Broker
701.713.6606
mike.elliott@erescompanies.com

ERES | erescompanies.com



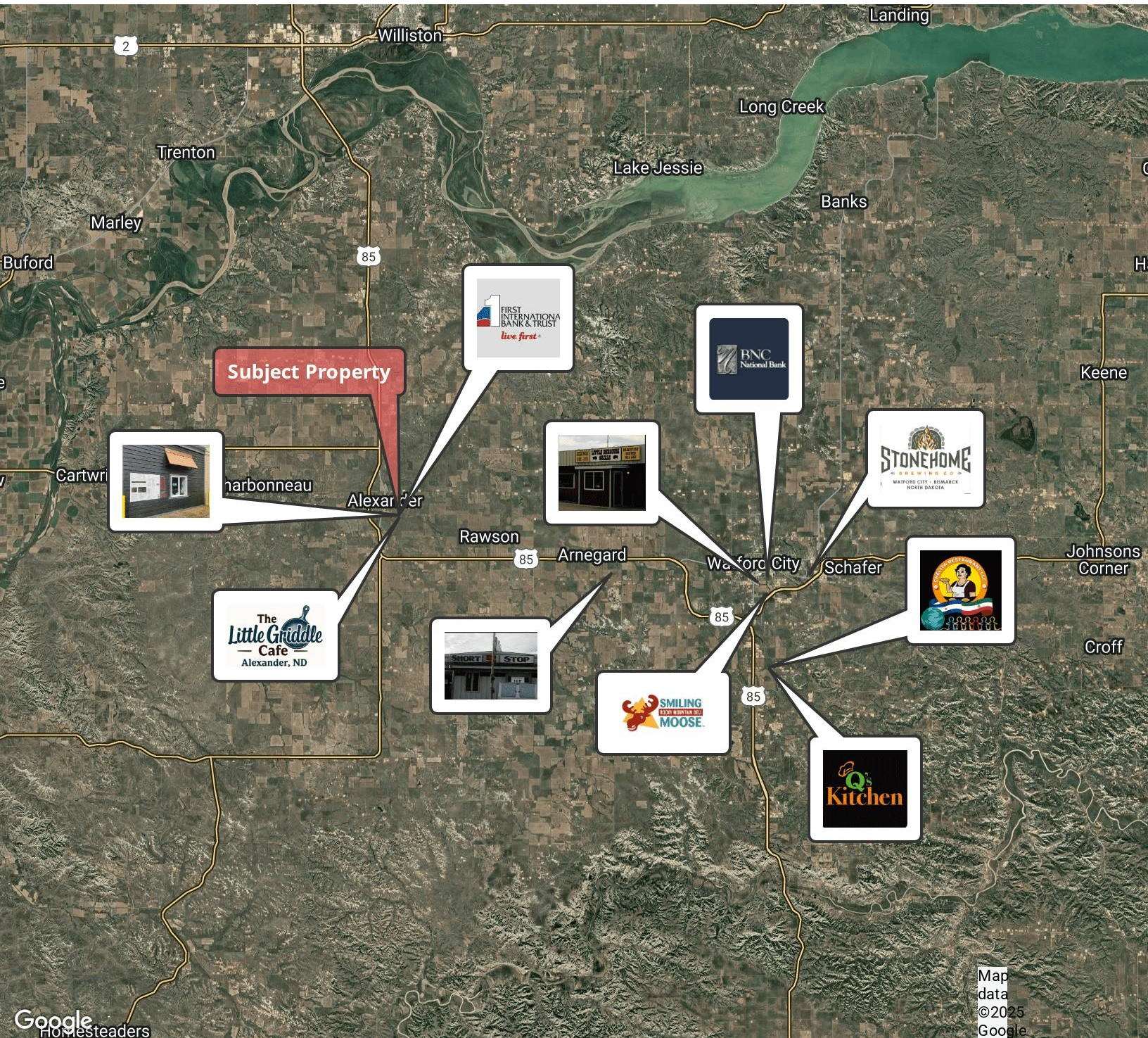
6,000 SF OFFICE/WAREHOUSE ON .241 AC

LOCATED MINUTES FROM I-85

620 ELK ST ALEXANDER, ND 58831

FOR LEASE

RETAILER MAP



Mike Elliott
CEO | Managing Broker
701.713.6606
mike.elliott@erescompanies.com



ERES | erescompanies.com